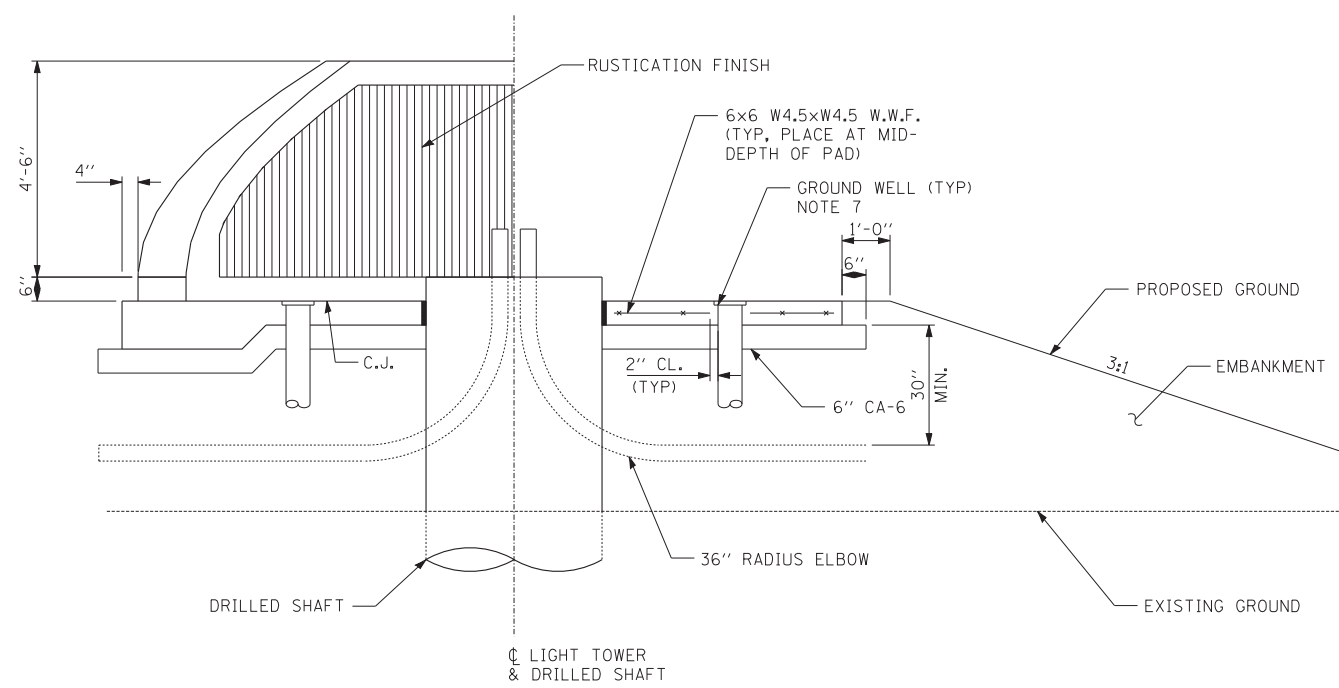


**PLAN**  
PLACE BARS  $w_1$  (E) THRU  $w_5$  (E) @ 12" CTS. BOT. OF PAD



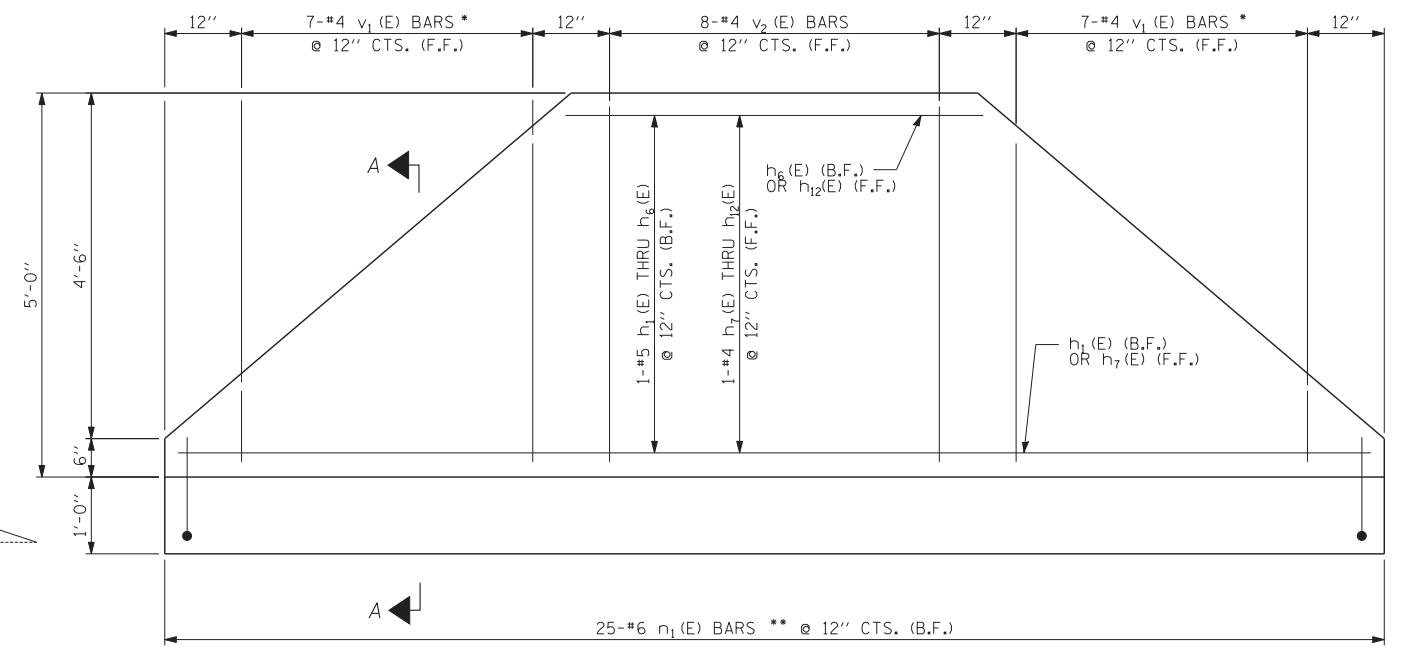
**ELEVATION**  
(HMLT NOT SHOWN FOR CLARITY)

**NOTES**

1. F.F. and B.F. denote Front Face and Back Face, respectively.
2. HMLT denotes High Mast Light Tower.
3. Refer to HMLT Service Pad, Special & Retaining Wall Details 2 for Bar Bending Diagrams, Bill of Material, Bar Sections and Details.
4. T/Wall slope is constant along the arc of any given radius.
5. Place horizontal tails of n (E) bars radially.
6. PVC sleeves must be extended 6 inches beyond the edge of the concrete pad (PVC sleeve shall be included in the cost of Light Tower Service Pad, Special)
7. Adjust service pad reinforcement to miss wells. Any necessary vertical adjustments shall be included in the cost of Light Tower Service Pad, Special.

LEFT OFFSET						
HMLT ID NUMBER	STATION	CONFIGURATION	TEMPORARY (T)/ PERMANENT(P)	EXIST. GROUND ELEVATION (ft)	TOP OF DRILLED SHAFT ELEVATION (ft)	EMBANKMENT (cu. yd.)
JAB 1	1284+41	PAD ON MOUND	T	605.98	608.60	18
JAB 2	1289+49	PAD W/WALL	P	610.20	609.50	0
JEF 1	1288+16	PAD ON MOUND	T	603.24	609.70	169
JEF 2	1291+68	PAD ON MOUND	P	608.00	609.40	1
JIJ 2	1054+95	PAD ON MOUND	P	601.45	602.50	-2 *
RIGHT OFFSET						
JGH 1	1288+41	PAD ON MOUND	T	603.94	609.90	139
JGH 2	1291+71	PAD ON MOUND	P	608.53	609.40	-3 *
JCD 1	1284+36	PAD ON MOUND	T	605.41	609.70	62
JCD 3	1280+56	PAD W/WALL	P	606.43	607.90	0
JOP 2	1288+79	PAD ON MOUND	P	601.94	603.00	-2 *

NOTE: Temporary denotes to be removed and replaced with Light Tower, Service Pad, Special during Construction Stage II final grading.  
- \* Denotes excavation surplus.



**RETAINING WALL ELEVATION (PROJECTED)**  
(LOOKING AT F.F.)

- \* CUT TO FIT, USE REMAINDER OF BARS AT OPPOSITE END OF WALL. SEE CUTTING DIAGRAM (DETAIL SHEET 2 OF 2)
- \*\* CUT TO FIT WHERE NECESSARY, DISCARD EXCESS.

**TYLIN INTERNATIONAL**

USER NAME =	DESIGNED - MI	REVISED -
PLOT SCALE =	DRAWN - JG	REVISED -
PLOT DATE =	CHECKED - JPM	REVISED -
	DATE - 5/23/2012	REVISED -

**STATE OF ILLINOIS**  
**DEPARTMENT OF TRANSPORTATION**

**147TH STREET PROJECT**  
**HIGH MAST LIGHT TOWER SERVICE PAD & RETAINING WALL DETAILS**

F.A.I. RTE.	SECTION	COUNTY	TOTAL SHEETS	SHEET NO.
XX	(0405-1 & 0506-2) R-1	COOK	577	450
FED. ROAD DIST. NO.			ILLINOIS FED. AID PROJECT	CONTRACT NO. 60M57