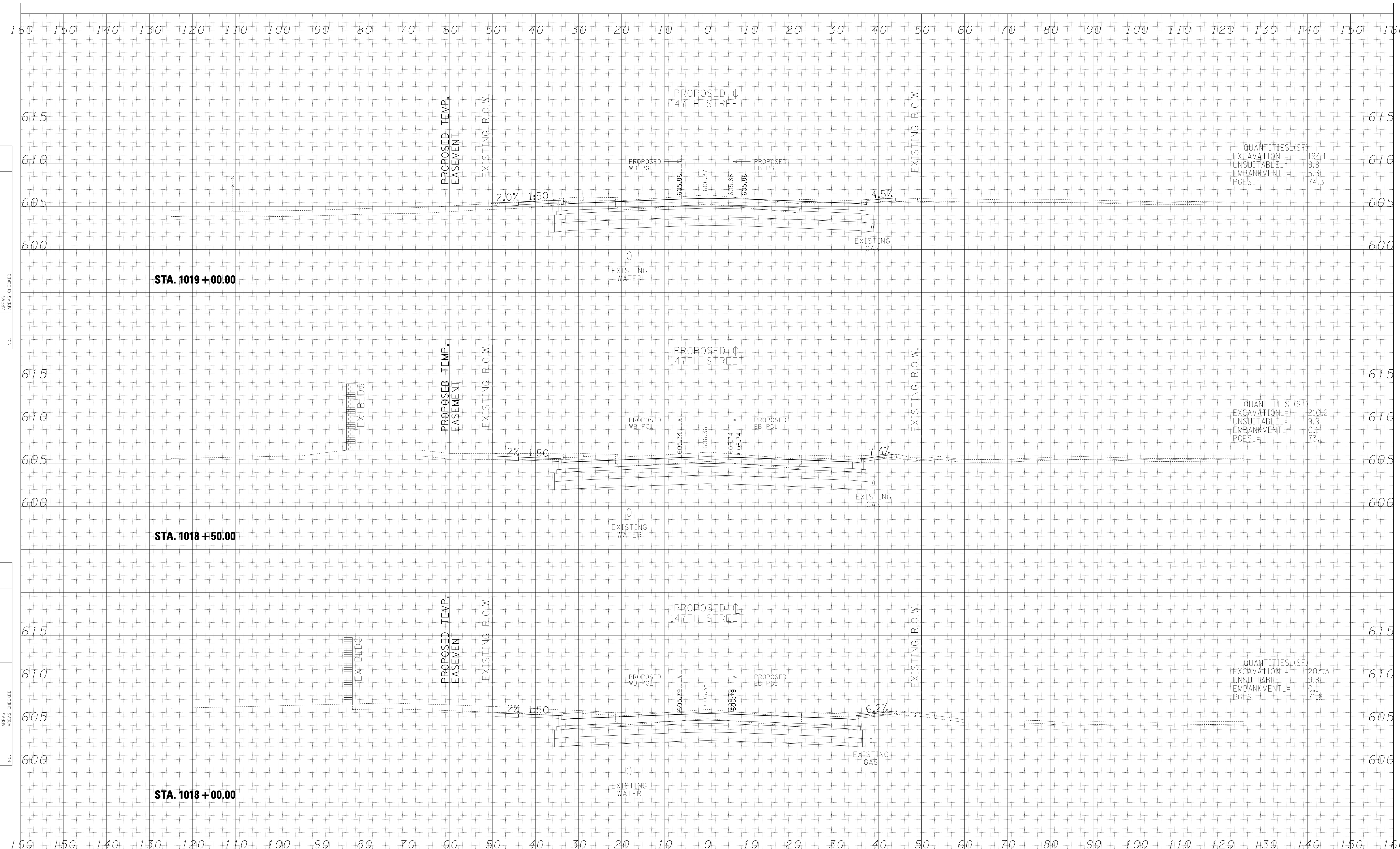


DATE	
BY	
SURVEYED	
PLOTTED	
TEMPLATE	
AREAS	
CHECKED	
FINAL SURVEY	
NOTE BOOK	
NO.	

DATE	
BY	
SURVEYED	
PLOTTED	
TEMPLATE	
AREAS	
CHECKED	
ORIGINAL SURVEY	
NOTE BOOK	
NO.	



**TYLIN** INTERNATIONAL

USER NAME =	DESIGNED - JPM	REVISED -
PLOT SCALE =	DRAWN - JDF	REVISED -
PLOT DATE	CHECKED - JPM	REVISED -
	DATE - 2/24/2012	REVISED -

**STATE OF ILLINOIS  
DEPARTMENT OF TRANSPORTATION**

**I-294 AT I-57 INTERCHANGE PROJECT  
PROPOSED 147TH STREET CROSS SECTIONS**

SCALE: 1" = 10' V, 1" = 100' H

SHEET NO. OF SHEETS STA. 1018+00.00 TO STA. 1019+00.00

F.A. RTE.	SECTION	COUNTY	TOTAL SHEETS	SHEET NO.
57	1414.2B	COOK	577	511
CONTRACT NO. 60M57				
FED. ROAD DIST. NO. ILLINOIS FED. AID PROJECT				

p:\602540(57-294)\road\p10\_147th\P10\_XS\_147TH.SHT.dgn