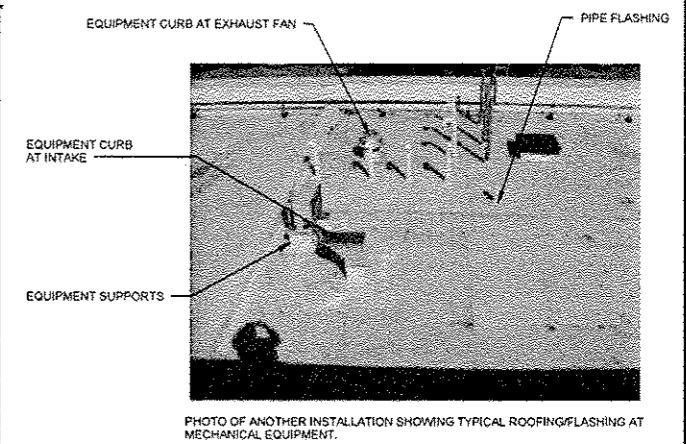
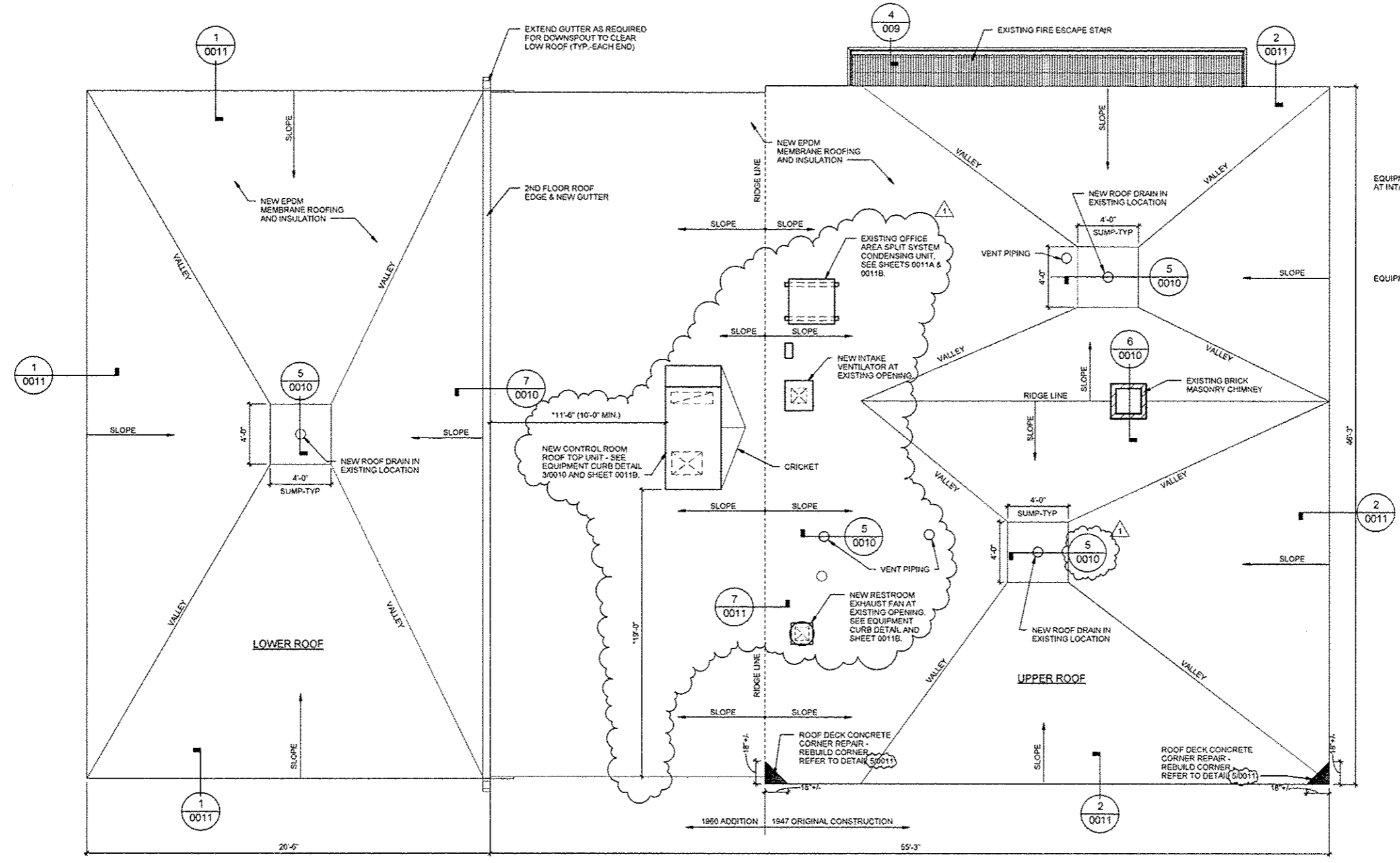


GENERAL NOTES

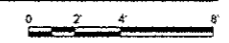
1. CONTRACTOR TO FIELD VERIFY ALL DIMENSIONS.
2. MINIMUM ROOF INSULATION THICKNESS = 2"
3. MINIMUM SLOPE OF FINISHED ROOFING = 1/4" PER 1'-0". ACHIEVE SPECIFIED MINIMUM SLOPE WITH TAPERED INSULATION, AS REQUIRED.



NOTE: CONTRACTOR TO LOCATE EMBEDDED UTILITIES IN ROOF DECK PRIOR TO CORING OR CUTTING CONCRETE. REVIEW ANY INTERFERENCE WITH ENGINEER.

*DIMENSIONS ARE APPROXIMATE. CONFIRM LOCATION OF UNIT TO POSITION SUPPLY AND RETURN OPENINGS BETWEEN CONCRETE ROOF BEAMS AND TO CLEAR UTILITIES THAT MAY BE EMBEDDED IN THE CONCRETE ROOF DECK.

1 ROOF PLAN - NEW WORK
1/4" = 1'-0"



BILL OF MATERIALS

| ITEMS | UNIT | TOTAL |
|----------------------------------|------|-------|
| MOBILIZATION / STAGING | LS | 1 |
| ROOF DECK CONCRETE CORNER REPAIR | LS | 1 |
| ROOF REPLACEMENT, LOCATION 1 | LS | 1 |
| ROOF DRAIN COLLECTION NETWORK | LF | 88 |