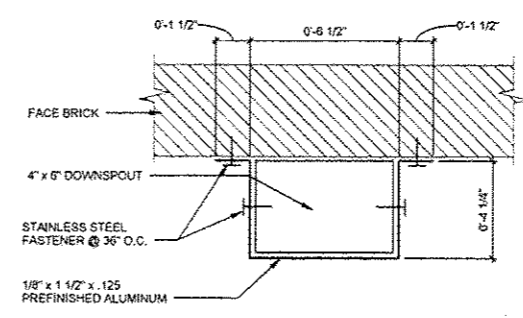
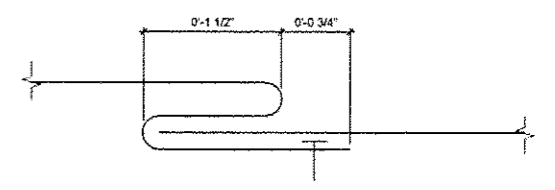


1. 0.60 EPDM MEMBRANE - EXTEND OVER ROOF EDGE ONTO FASCIA COUNTER-FLASHING METAL FASCIA UNDER METAL GUTTER.
2. 2" POLYISOCYANURATE ROOF INSULATION - ADHERE TO EXISTING CONCRETE ROOF SLAB.
3. ROOFING SYSTEM SEALANT CONTINUOUS - PER MANUFACTURER REQUIREMENTS.
4. TAPERED POLYISOCYANURATE ROOF INSULATION - ADHERE TO BASE SHEET PER MANUFACTURER'S REQUIREMENTS.
5. 1/2" ROOFING CELLULOSIC-FIBER BOARD INSULATION - ADHERE TO TAPERED INSULATION PER MANUFACTURER'S REQUIREMENTS.
6. #1 - 2 x 6 TREATED WOOD DECK PLATE - CONTINUOUS ALONG ROOF EDGE - ANCHOR INTO CONCRETE ROOF DECK WITH 3 1/4" x 1/4" 410 STAINLESS STEEL CONCRETE SCREW @ 12" O.C. MINIMUM AND INTO 2 x 8 WOOD FASCIA WITH #10 x 3 1/4" AUGER POINT 316 STAINLESS STEEL WOOD STAR DRIVE SCREW @ 12" O.C.
7. #10 x 3 1/4" AUGER POINT 316 STAINLESS STEEL WOOD STAR DRIVE SCREW - TYPICAL SCREW FOR ANCHORING ALL WOOD INTO ADJACENT WOOD SUBSTRATES.
8. .040 PREFINISHED ALUMINUM BREAKMETAL ROOF EDGE FLASHING - EXTEND 5" ONTO 2 x 8 ROOF EDGE SUBSTRATE - ANCHOR INTO WOOD SUBSTRATE WITH #8 x 1 1/4" STAINLESS STEEL SCREWS AT 12" O.C.
9. .0125 ALUMINUM GUTTER BRACKET - ANCHOR BACKSIDE INTO 2 x 6 TREATED WOOD DECK PLATE @ 24" O.C. AND RIVET FRONT SIDE INTO FACE OF GUTTER RETURN WITH STAINLESS STEEL RIVETS.
10. .050 PREFINISHED ALUMINUM GUTTER - CONTINUOUS ALONG NORTH ROOF EDGE OF UPPER ROOF - FLASHING UNDER AND ANCHORED TO CONTINUOUS TREATED WOOD SUBSTRATE @ 12" O.C.
11. #1 - 2 x 6 TREATED WOOD FASCIA - CONTINUOUS ALONG ROOF EDGE FASTENED TO EDGE OF CONCRETE ROOF DECK WITH 3 1/4" x 1/4" 410 STAINLESS STEEL CONCRETE SCREW @ 12" O.C.
12. .040 PREFINISHED ALUMINUM BREAKMETAL FASCIA AND SOFFIT COVER - FLASH UNDER GUTTER CONTINUOUS ALONG NORTH ROOF EDGE ON UPPER ROOF - ANCHOR INTO WOOD SUBSTRATE.
13. .040 PREFINISHED ALUMINUM BREAKMETAL "J" MOLD TRIM - CONTINUOUS ALONG NORTH ROOF EDGE ON UPPER ROOF - ANCHOR INTO 2 x 8 WOOD SUBSTRATE WITH #8 x 1 1/4" STAINLESS STEEL SCREW @ 12" O.C.
14. EXISTING CONCRETE ROOF DECK.
15. EXISTING MASONRY FACE BRICK.
16. .060 EPDM STRIP-FLASHING PER MANUFACTURER'S REQUIREMENTS.
17. 4" x 6" .050 PREFINISHED ALUMINUM DOWNSPOUT - ANCHOR TO BUILDING WITH .125 ALUMINUM BRACKETS PLACED WITH NOT MORE THAN 5 FEET BETWEEN.

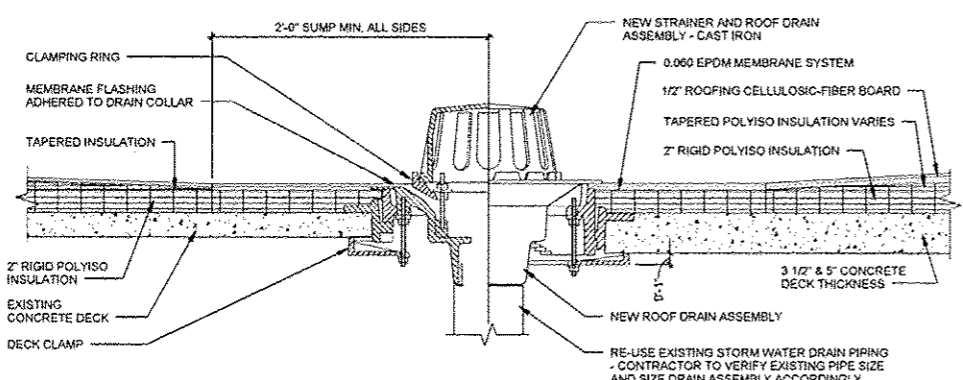
**7 ROOF EDGE/GUTTER/DOWNSPOUT DETAIL**  
1 1/2" = 1'-0"



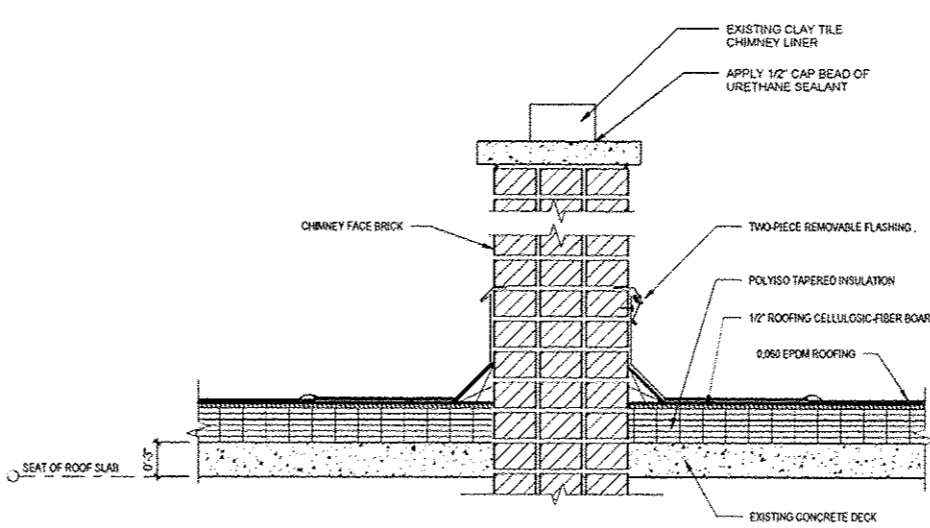
**8 DOWNSPOUT STRAP DETAIL - TYP.**  
3" = 1'-0"



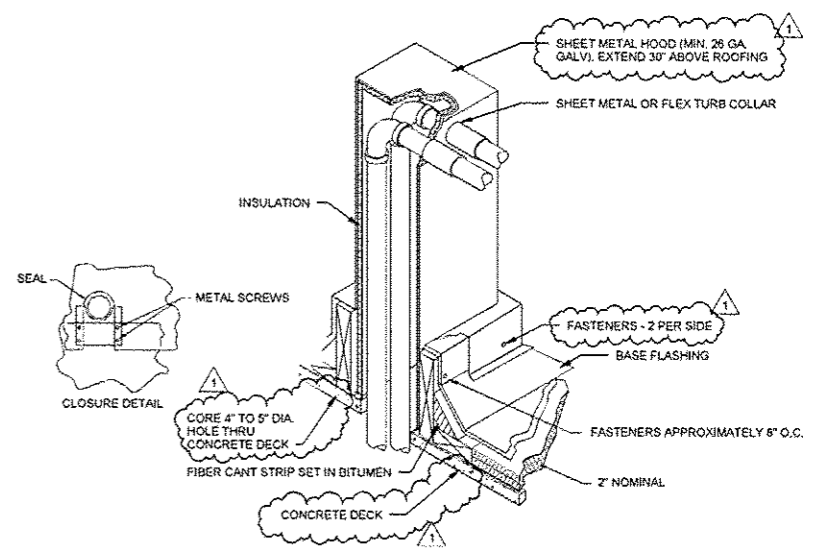
**9 SHEETMETAL SPLICE DETAIL - TYP.**  
12" = 1'-0"



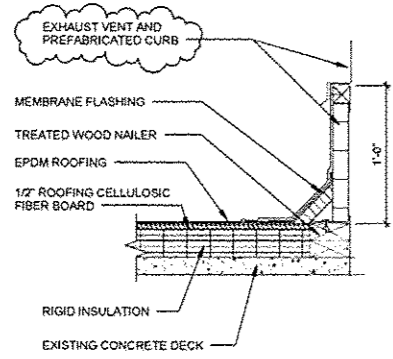
**5 ROOF DRAIN - TYPICAL**  
1 1/2" = 1'-0"



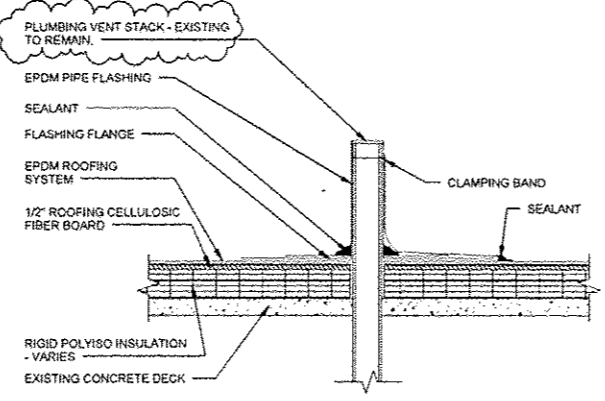
**6 CHIMNEY FLASHING DETAIL - TYPICAL**  
1 1/2" = 1'-0"



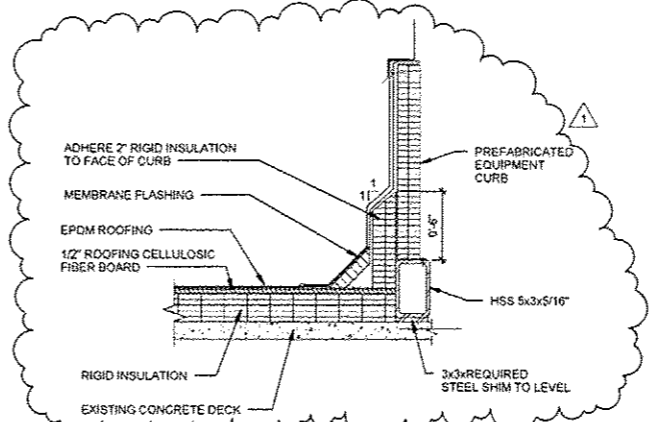
**10 PIPE CURB DETAIL**  
NOT TO SCALE



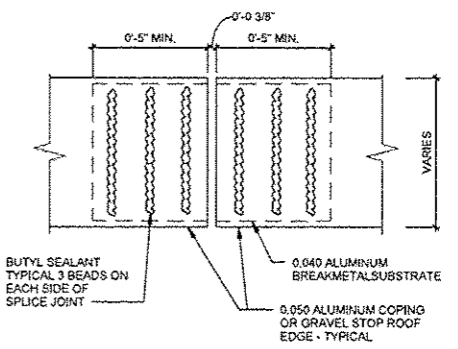
**1 EXHAUST CURB FLASHING**  
1 1/2" = 1'-0"



**2 VENT PIPE FLASHING (PRE-FAB)**  
1 1/2" = 1'-0"



**3 EQUIPMENT CURB FLASHING**  
1 1/2" = 1'-0"



**4 COPING/GRAVEL STOP SPLICE DETAIL - TYP.**  
3" = 1'-0"