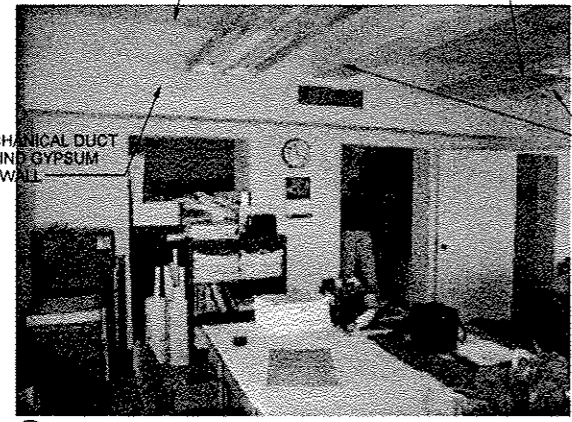
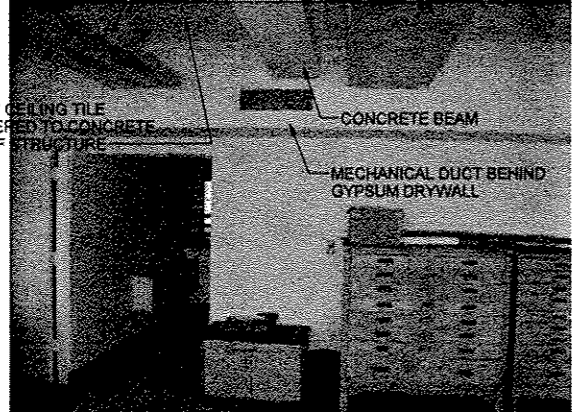


1' x 1' CEILING TILE ADHERED TO CONCRETE ROOF STRUCTURE
 LIGHT FIXTURES TO REMAIN



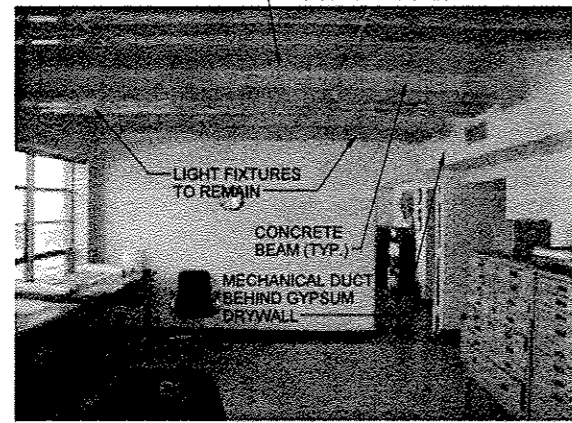
(A) OFFICE 205 LOOKING SOUTH

LIGHT FIXTURES TO REMAIN

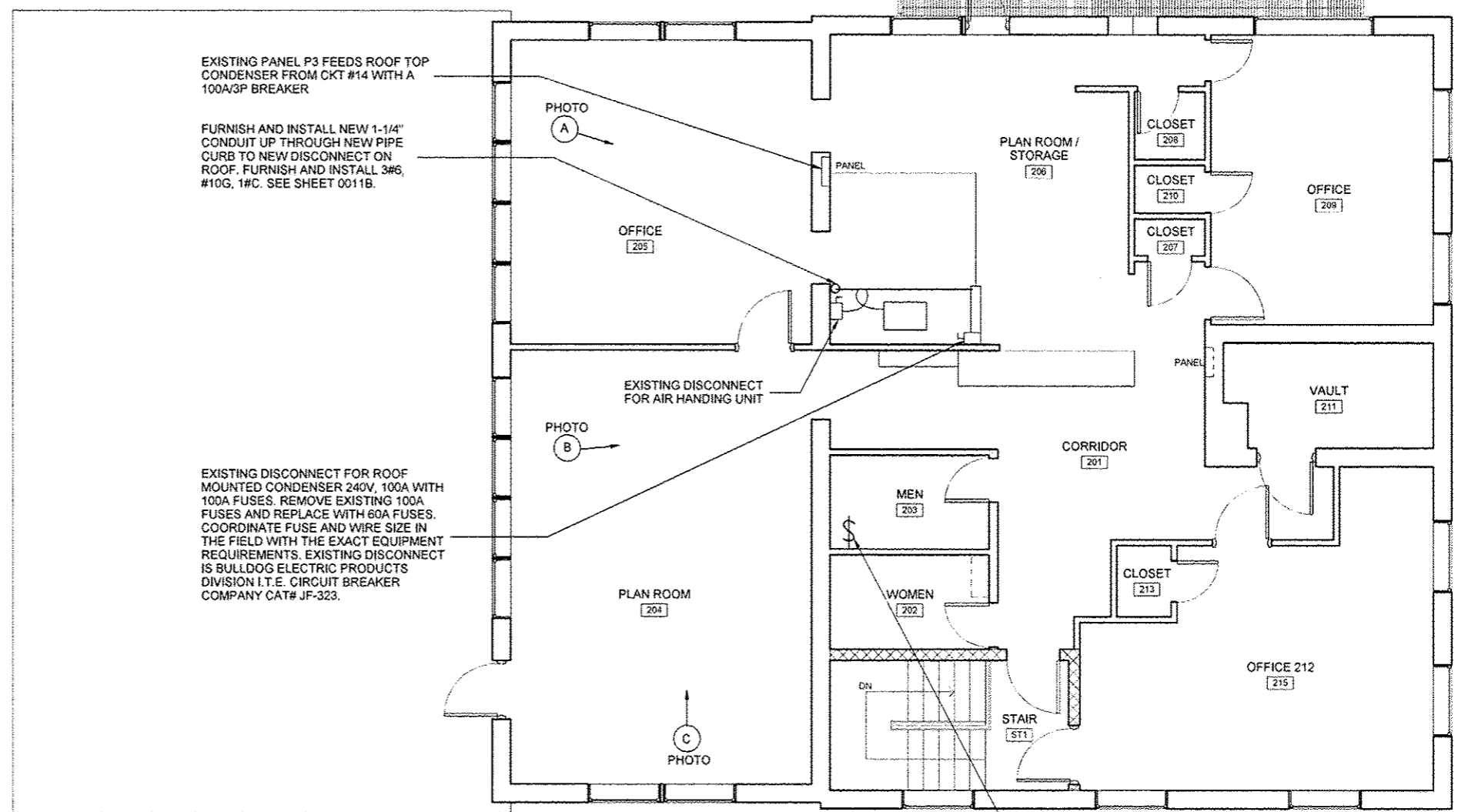


(B) PLAN ROOM 204 LOOKING SOUTH

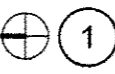
1' x 1' CEILING TILE ADHERED TO CONCRETE CEILING



(C) PLAN ROOM 204 LOOKING EAST



SECOND FLOOR POWER PLAN - DEMO & NEW WORK



1
 1/4" = 1'-0"

(INCLUDED WITH MECHANICAL WORK, COMPLETE)



USER NAME =	DESIGNED - BRK	REVISED	09/04/12 NEWLY ADDED SHEET
PLOT SCALE =	DRAWN - BRK	REVISED	
PLOT DATE =	CHECKED - RDN	REVISED	
	APPROVED - RDN	REVISED	

STATE OF ILLINOIS
 DEPARTMENT OF
 TRANSPORTATION

SECOND FLOOR POWER PLAN - DEMO & NEW WORK

Scale SHEET NO. 11 OF 11 SHEETS Station From Station To

F.A.P. RTE.	SECTION	COUNTY	TOTAL SHEETS	SHEET NO.
	2012-0451	WILL	11	0011C
CONTRACT NO. 60V37				
ILLINOIS FED. AID PROJECT				