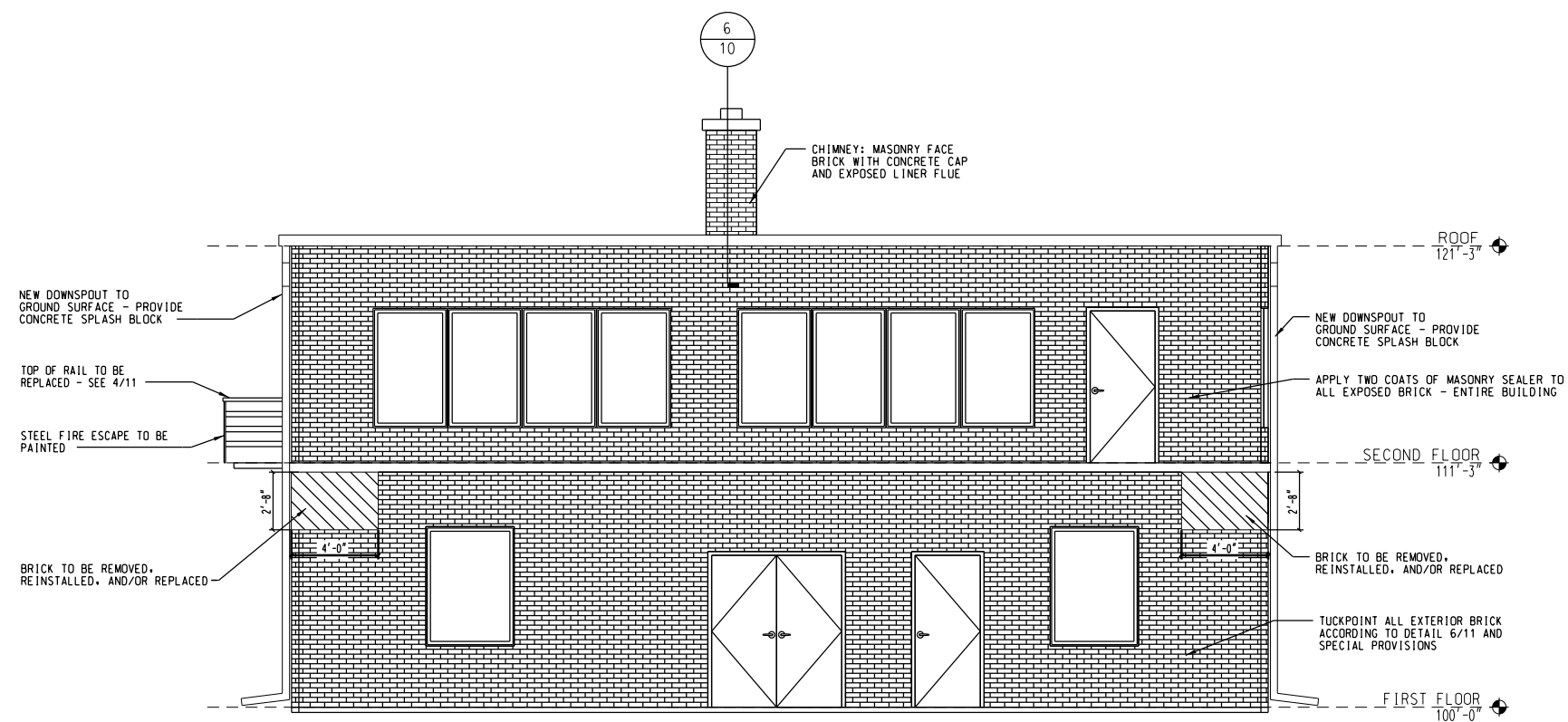
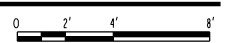
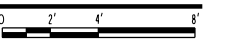


2 SOUTH ELEVATION  
1/4" = 1'-0"



1 NORTH ELEVATION  
1/4" = 1'-0"



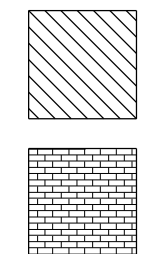
SOUTH ELEVATION



NORTH ELEVATION



EXISTING CHIMNEY



BILL OF MATERIALS

ITEMS	UNIT	TOTAL
MASONRY FACE BRICK REPAIR	SF	60
MASONRY CLEANING AND TUCKPOINTING	SF	4,265
MASONRY SEALER	SF	4,265
MODIFICATION AND PAINTING OF FIRE ESCAPE	LS	1

NOTES: BILL OF MATERIALS IS COMBINED FOR SHEETS 7 AND 8.  
ROOF DRAIN COLLECTION NETWORK (GUTTER AND DS) QUANTITY SHOWN ON ROOF PLAN



USER NAME =	DESIGNED - LOF	REVISED
	DRAWN - BRK	REVISED
PLOT SCALE =	CHECKED - EJM	REVISED
PLOT DATE = 06-28-2012	APPROVED - GLC	REVISED

STATE OF ILLINOIS  
DEPARTMENT OF  
TRANSPORTATION

EXTERIOR ELEVATIONS

Scale SHEET NO. 7 OF 11 SHEETS Station From Station To

F.A.P. RTE.	SECTION 2012-0451	COUNTY WILL	TOTAL SHEETS 11	SHEET NO. 7
CONTRACT NO. 60V37			ILLINOIS FED. AID PROJECT	