

STATE OF ILLINOIS
DEPARTMENT OF TRANSPORTATION
DIVISION OF HIGHWAYS

**JOLIET VARIOUS MOVABLE BRIDGES
AUTOMATION**

**BRIDGE OFFICE BUILDING
SECTION NO. 2012-045I**

**CONSTRUCTION PROJECT NO. C-91-546-12
IMPROVEMENTS TO BUILDING EXTERIOR
WILL COUNTY**

D-91-301-09

F.A. RTE.	SECTION	COUNTY	TOTAL SHEETS	SHEET NO.
N.A.	BRIDGE OFFICE BUILDING	WILL	11	1
	JOLIET	ILLINOIS	CONTRACT NO. 60V/37	

INDEX OF SHEETS

- COVER SHEET
- SUMMARY OF QUANTITIES
- ABBREVIATIONS, SYMBOLS LEGEND AND TOTAL BILL OF MATERIALS
- ROOF PLAN - DEMOLITION
- ROOF PLAN - NEW WORK - MECHANICAL OPTION 1
- ROOF PLAN - NEW WORK - MECHANICAL OPTION 2
- EXTERIOR ELEVATIONS
- EXTERIOR ELEVATIONS
- EXISTING CONDITION DETAILS
- NEW WORK DETAILS
- NEW WORK DETAILS

PROJECT DESCRIPTION:

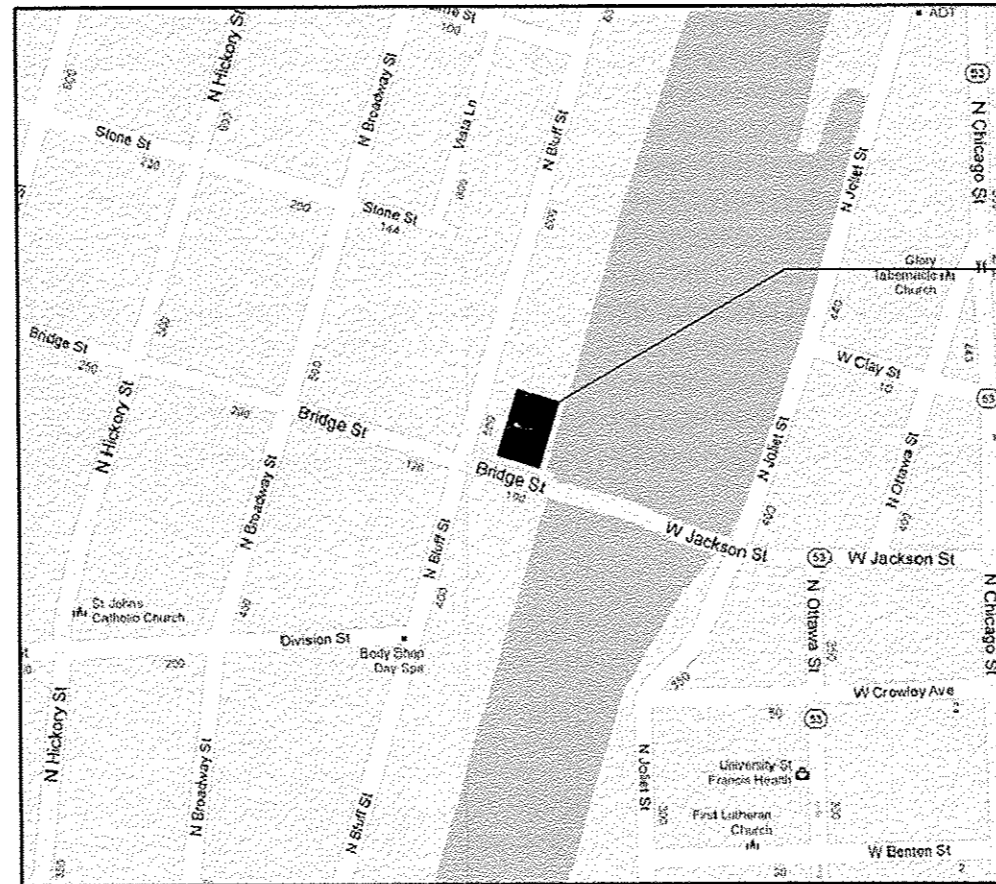
ROOF REPLACEMENT, EXTERIOR MASONRY TUCKPOINTING AND SEALING AND MODIFICATION AND PAINTING OF FIRE ESCAPE AT BRIDGE OFFICE BUILDING. MECHANICAL EQUIPMENT CURBS/PLATFORMS WILL BE FURNISHED AND INSTALLED UNDER A SEPARATE CONTRACT TO BE COMPLETED CONCURRENTLY WITH THIS PROJECT. STRUCTURAL IN-FILL OF EXISTING OPENINGS AND CONSTRUCTION OF NEW OPENINGS FOR MECHANICAL EQUIPMENT WILL ALSO BE INCLUDED WITH THE SEPARATE PROJECT. NOTE THAT TWO ROOF PLANS ARE SHOWN TO DEPICT TWO OPTIONS FOR MECHANICAL SYSTEMS. ONE OPTION WILL BE SELECTED.

FULL SIZE PLANS HAVE BEEN PREPARED USING STANDARD ARCHITECTURAL SCALES. APPLICABLE BAR SCALES ARE SHOWN ON EACH SHEET.

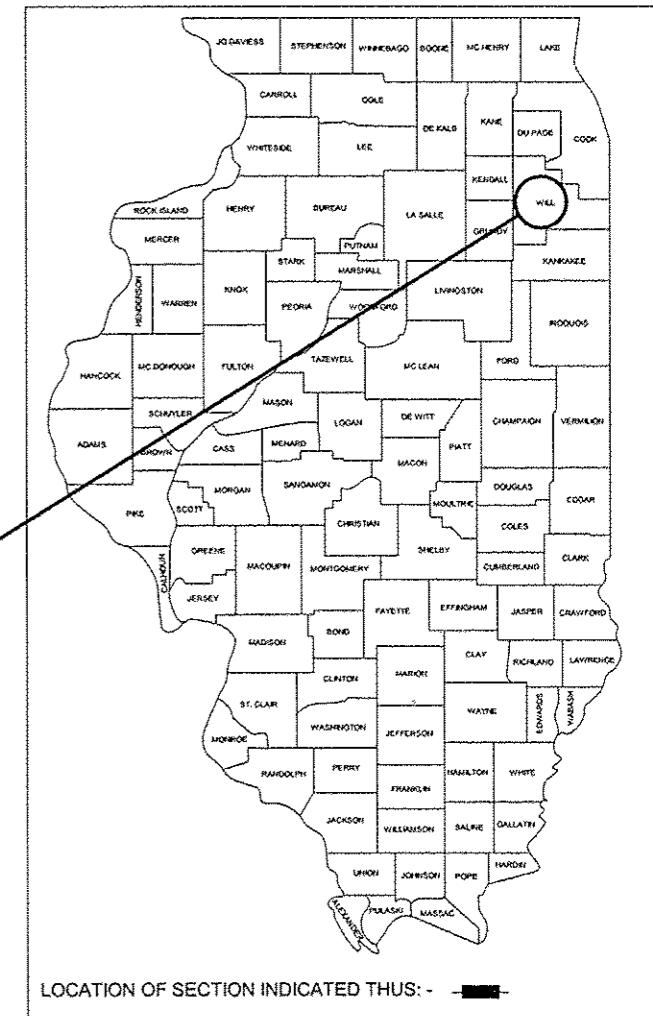
J.U.L.I.E.
JOINT UTILITY LOCATION INFORMATION FOR EXCAVATION
1-800-892-0123 OR 811

CONTRACT NO. 60V/37

PRINTED BY THE AUTHORITY
OF THE STATE OF ILLINOIS



LOCATION PLAN
NO SCALE



LOCATION OF SECTION INDICATED THIS: - [black rectangle] -



EXPIRES: 11/30/12
Eric J. Marks
6/28/2012

STATE OF ILLINOIS
DEPARTMENT OF TRANSPORTATION
DIVISION OF HIGHWAYS

SUBMITTED July 5, 2012
John P. [Signature]
DEPUTY DIRECTOR OF HIGHWAYS, REGION ENGINEER

August 17, 2012
John J. Baranzelli, P.E. /a
acting ENGINEER OF DESIGN AND ENVIRONMENT

August 17, 2012
William R. Frey /a
acting DIRECTOR OF HIGHWAYS, CHIEF ENGINEER

PROJECT MANAGER - SERIN KELLER (847) 705-4556
PROJECT ENGINEER - JOE SACCOMANNO (847) 705-4594



CONSTRUCTION
CODE
100% STATE
BRIDGE
0044
URBAN

CODE NO.	ITEM	UNIT	TOTAL QUANTITY
X0323964	ROOF DRAIN COLLECTION NETWORK	FOOT	88
X0325153	MASONRY CLEANING AND TUCKPOINTING	SQ YD	4,265
X0327397	ROOF REPLACEMENT, LOCATION 1	L SUM	1
X0327468	ROOF DECK CONCRETE CORNER REPAIR	L SUM	1
X0327469	MASONRY FACE BRICK REPAIR	SQ FT	60
X0327470	MASONRY SEALER	SQ FT	4,265
X0327471	MODIFICATION AND PAINTING OF FIRE ESCAPE	L SUM	1
X0327472	ROOFING SAMPLING AND ACM IDENTIFICATION	L SUM	1
X0327473	HANDLING OF ASBESTOS CONTAINING MATERIALS (ACM)	L SUM	1
67100100	MOBILIZATION	L SUM	1



USER NAME =
DESIGNED - EJM
DRAWN - EJM
CHECKED - EJM
APPROVED - RLC
PLGT DATE = 06-28-2012

REVISED
REVISED
REVISED
REVISED

STATE OF ILLINOIS
DEPARTMENT OF
TRANSPORTATION

SUMMARY OF QUANTITIES

Scale SHEET NO. 2 OF 11 SHEETS Station From Station To

D.A.P. REF.	SECTION	COUNTY	TOTAL SHEETS	SHEET NO.
	2012-0451	WILL	11	2
CONTRACT NO.			60V37	

ILLINOIS FED. AID PROJECT

ABBREVIATIONS

& - AND @ - AT A.B. - ANCHOR BOLT A/C - AIR CONDITIONING ACT - ACOUSTICAL TILE AD. - AREA DRAIN, AS SHOWN ADJ. - ADJUST - ADJUSTABLE A.F.F. - ABOVE FLOOR FINISH AL. - ALUM - ALUMINUM ALT. - ALTERNATE AP. - ACCESS PANEL APPROX. - APPROXIMATELY BB. - BULLETIN BOARD B.C. - BRICK COURSES BD. - BOARD BITUM. - BITUMINOUS BLDG. - BUILDING BLK. - BLOCK, BLKG. - BLOCKING BM., B.M. - BEAM, BENCH MARK B.N. - BULL NOSE B.O.F. - BOTTOM OF FOOTING BOT. - BOTTOM B.P. - BASE PLATE BRK. - BRICK CL. - CENTERLINE CAB. - CABINET CAP. CAPACITY C.B. - CHALK BOARD C.C. - CENTER TO CENTER C.D. - CEILING DIFFUSER CEM. - CEMENT CER. - CERAMIC C.F.M. - CUBIC FEET PER MINUTE C.H. - COAT HOOK C.J. - CONTROL JOINT CLR. - CLEAR, COLOR CLG. - CEILING CLKG. - CAULKING C - CLOSET C.M.U. - CONCRETE MASONRY UNITS C.O. - CLEANOUT COL. - COLUMN CONC. - CONCRETE CONST. - CONSTRUCTION CONT. - CONTINUOUS	CONTR. - CONTRACT COR. BD. - CORNER BEAD CORR. - CORRIDOR, CORROSION C.R. - COLD ROLLED CPT. - CARPET C.T. - CERAMIC TILE CTG. - COATING CTSK. - COUNTERSUNK C.W. - COLD WATER C.F./C.I. - CONTRACTOR FURNISHED/ CONTRACTOR INSTALLED DIA. - DIAMETER DET. - DETAIL DIA. - DIAMETER DIAG. - DIAGONAL, DIAGRAM DIM. - DIMENSION DISP. - DISPENSER D.L. - DEAD LOAD DN. - DOWN D.P. - DAMPPROOFING, DUMPSTER PAD, DEPTH DR. - DOOR D.S. - DOWNSPOUT D.W. - DISHWASHER D.W.C. - DRINKING WATER COOLER DBL. - DOUBLE E.W.C. - ELECTRIC WATER COOLER E.W.H. - ELECTRIC WATER HEATER EXH. - EXHAUST EXIST. - EXISTING EXP. - EXPANSION, EXPOSED EXT. - EXTERIOR E. - EAST EA. - EACH E.I.F.S. - EXTERIOR INSULATION FINISH SYSTEM E.F. - EACH FACE E.J., EXP. JT. - EXPANSION JOINT EL. - ELEVATION ELEC. - ELECTRICAL EQ. - EQUAL EQUIP. - EQUIPMENT E.W. - EACH WAY F.A. - FRESH AIR F.A.P. - FIRE ALARM PANEL F.C. - FURRED CEILING F.C.U. - FAN COIL UNIT F.D. - FLOOR DRAIN, FIRE DAMPER FDN., FOUND. - FOUNDATION F.E.C. - FIRE EXTINGUISHER CABINET F.F.EL. - FINISH FLOOR ELEVATION F.G. - FINISH GRADE F.H. - FIRE HYDRANT, FLAT HEAD F.H.C. - FIRE HOSE CABINET FIN. - FINISH (ED) (ES) FL. - FLOOR FT. - FOOT, FEET, FT. - SQ. FT. F.T.D. - FACIAL TISSUE DISPENSER FTG. - FOOTING	FURN. - FURNITURE FUT. - FUTURE GA. - GAGE GAL. - GALLON GALV. - GALVANIZED G.B. - GRAB BARS G.F./C.I. - GOVERNMENT FURNISHED/ CONTRACTOR INSTALLED G.F.E. - GOVERNMENT FURNISHED EQUIPMENT G.F.R.C. - GLASS FIBER REINFORCED CONCRETE GL., G.L. - GLASS, GRADE LINE GR. - GRADE GRD. - GROUND G.T. - GREASE TRAP G.W.B. - GYPSUM WALL BOARD GYP. BD. - GYPSUM BOARD H., HGT., HT. - HEIGHT H.B. - HOSE BIBB H.W. - HOLLOW METAL HORIZ. - HORIZONTAL H.P. - HIGH POINT HR. - HOUR HTG. - HEATING H.W. - HOT WATER HDW. - HARDWARE HWY. - HIGHWAY I.D. - INSIDE DIAMETER IN. - INCH INSUL. - INSULATION INT. - INTERIOR INV. - INVERT JAN. - JANITORS'S CLOSET JT. - JOINT JT. - JOIST J.C. - JANITOR'S CLOSET K.O. - KNOCKOUT K.P. - KICK PLATE K.D. - KILN DRIED LAB. - LABORATORY LAV. - LAVATORY LB. - POUND LBS. - POUNDS LG. - LONG L.H. - LEFT HAND LKR. - LOCKER L.L. - LIVE LOAD L.L.H.- LONG LEG HORIZONTAL L.L.V. - LONG LEG VERTICAL L.P. - LOW POINT	MAINT. - MAINTENANCE MAS. - MASONRY MAX. - MAXIMUM M.C. - MEDICINE CABINET MECH. - MECHANICAL MEZZ. - MEZZANINE MET. - METAL MFG. - MANUFACTURER M.G. - MIRROR GLASS M.H. - MANHOLE MIN. - MINIMUM MISC. - MISCELLANEOUS M.O. - MASONRY OPENINGS MULL. - MULLION N. - NORTH N.I.C. - NOT IN CONTRACT NO. - NUMBER N.T.S. - NOT TO SCALE O.A. - OUTSIDE AIR O.C. - ON CENTER (S) O.D. - OUTSIDE DIAMETER, OVERFLOW DRAIN OFF. - OFFICE O.H. - OPPOSITE HAND O.J. - OPEN JOISTED OPP. - OPPOSITE O.R. - OUTSIDE RADIUS OZ. - OUNCES P.E.J. - PREMOLED EXP. JT. MAT. P.I. - POINT OF INTERSECTION P.J.F. - PREFORMED JOINT FILLER PL. - PLATE PLAS. - PLASTER P. LAM. - PLASTIC LAMINATE PLYWD. - PLYWOOD PNL. - PANEL PNL.S. - PANELS PR. - PAIR P.S.F. - POUNDS PER SQUARE FOOT P.S.I. - POUNDS PER SQUARE INCH PT. - POINT, POINT OF TANGENT P.T.D. - PAPER TOWEL DISPENSER Q.T. - QUARRY TILE QTY. - QUANTITY R.B. - RESILIENT BASE R. - RADIUS, RISER R.A. - RETURN AIR RAD. - RADIUS R.D. - ROOF DRAIN RECP. - RECEPTACLE REF. - REFERENCE REINF. - REINFORCE (D), (MENT) REQ'D. - REQUIRED RET. - RETAINING REV. - REVISION RM.(S) - ROOM (S) R.O. - ROUGH OPENING SAN. - SANITARY S.B. - SPLASH BLOCK S.C. - SOLID CORE, SHOWER CURTAIN SCHED. - SCHEDULE SCR. - SCREEN S.C.R. - SHOWER CURTAIN ROD S.D. - SOAP DISPENSER SECT. - SECTION SEP. - SEPARATE SH. - SHEET SHOWER SHV. - SHELF, SHELVES SIM. - SIMILAR SL. - SLOPE S.M. - SHEET METAL S.N.D. - SANITARY NAPKIN DISPENSER S.N.T.D. - SANITARY NAPKIN & TAMPON DISPOSER SP. - SPACES SPEC. (S) - SPECIFICATIONS SQ. - SQUARE S.S. - STAINLESS STEEL, SERVICE SINK STL. - STEEL ST. - STORAGE STD. - STANDARD STRUCT. - STRUCTURAL SUP. - SUPPORT SUSP. - SUSPENDED SYS. - SYSTEM SHT. - SHEET T & G - TONGUE AND GROOVE T.B. - TOWEL BAR T.C. - TOP OF CURB T.D. - TILE DRAIN TEMP. - TEMPERATURE THK. - THICK T.O.B. - TOP OF BEAM T.O.S. - TOP OF STEEL T.T.D. - TOILET TISSUE DISPENSER T.W. - TOP OF WALL TYP. - TYPICAL U.H. - UNIT HEATER U.N.O. - UNLESS NOTED OTHERWISE V. - VENT V.C.T. - VINYL COMPOSITION TILE VERT. - VERTICAL (LY)	VEST. - VESTIBULE V.F. - VINYL FABRIC V.S. - VENT STACK V.T.R. - VENT THROUGH ROOF V.W.C. - VINYL WALL COVERING W/ - WITH W/O - WITHOUT WAINS. - WAINSCOT W.C. - WATER CLOSET W.D. - WOOD WDW. - WINDOW W.G. - WIRE GLASS W.P. - WATERPROOF, WEATHERPROOF W.R. - WASTE RECEPTACLE WT. - WEIGHT WTR. - WATER W.W.F. - WELDED WIRE FABRIC
--	---	--	--	---

SYMBOLS LEGEND

ROOM DESIGNATION 101

DOOR NUMBER 101

WALL TAG 11

WINDOW TYPE 1t

DETAIL

PLAN NUMBER A101 SIM

INTERIOR ELEVATION

SECTION NUMBER A101

BUILDING SECTION

ENLARGED PLAN

WALL SECTION

SHEET ON WHICH PLAN IS SHOWN

SHEET ON WHICH SECTION IS SHOWN

- GENERAL NOTES / SPECIAL REQUIREMENTS:
- CONTRACTOR AND SUBCONTRACTORS SHALL REVIEW, CHECK, AND VERIFY ALL DRAWINGS, DIMENSIONS, DETAILS, AND EXISTING SITE CONDITIONS FOR ACCURACY AND CONFORMANCE WITH SPECIFICATIONS PRIOR TO PROCEEDING WITH THE WORK.
 - ANY DISCREPANCY IN THE DRAWINGS AND DIMENSIONS OR VARIATIONS BETWEEN EXISTING CONDITIONS AND THAT SHOWN ON THE DRAWINGS SHALL BE BROUGHT TO THE ATTENTION OF THE ENGINEER FOR INSTRUCTION PRIOR TO START OF PROJECT.
 - ANY NECESSARY WORK ACTIVITIES NOT SHOWN OR DETAILED ON THE DRAWINGS BUT IS WITHIN THE WORK LIMITS AS INDICATED ON THE DRAWINGS SHALL BE CONSIDERED TO BE PART OF THE CONTRACT WORK AND SHALL NOT BE ELIGIBLE FOR CHANGE ORDERS.
 - CONTRACTOR SHALL BE RESPONSIBLE FOR COORDINATING THE WORK IN SUCH A FASHION AS NOT TO DISRUPT UTILITY SERVICES TO THE OWNER OR OWNER'S OCCUPANTS. ANY DAMAGE AND SUBSEQUENT REPAIRS TO EXISTING SYSTEMS SHALL BE THE SOLE RESPONSIBILITY OF THE CONTRACTOR.
 - CONTRACTOR SHALL BE RESPONSIBLE FOR DAILY CLEANING OF THE WORK SITE AND ALL CLEANING OF FLOORS OUTSIDE THE WORKING LIMITS AS DIRECTED AND TO THE SATISFACTION OF THE ENGINEER.
 - THE ARCHITECTURAL DRAWINGS AND SPECIFICATIONS REPRESENTED HEREIN DO NOT INDICATE THE METHOD OR MEANS OF CONSTRUCTION ACTIVITIES.
 - THE CONTRACT SPECIFICATIONS AND DRAWINGS REPRESENT AND SHALL BE CONSIDERED ONE COMPLETE SET OF CONSTRUCTION DOCUMENTS.

TOTAL BILL OF MATERIALS

ITEMS	UNIT	TOTAL
ROOF DRAIN COLLECTION NETWORK	LF	88
MASONRY CLEANING AND TUCKPOINTING	SF	4,265
ROOF REPLACEMENT, LOCATION 1	LS	1
ROOF DECK CONCRETE CORNER REPAIR	LS	1
MASONRY FACE BRICK REPAIR	SF	60
MASONRY SEALER	SF	4,265
MODIFICATION AND PAINTING OF FIRE ESCAPE	LS	1
ROOFING SAMPLING AND ACM IDENTIFICATION	LS	1
HANDLING OF ASBESTOS CONTAINING MATERIALS (ACM)	LS	1
MOBILIZATION	LS	1



USER NAME =	DESIGNED - LOF	REVISED
PLOT SCALE =	DRAWN - BRK	REVISED
PLOT DATE = 06-28-2012	CHECKED - EJM	REVISED
	APPROVED - GLC	REVISED

STATE OF ILLINOIS
DEPARTMENT OF
TRANSPORTATION

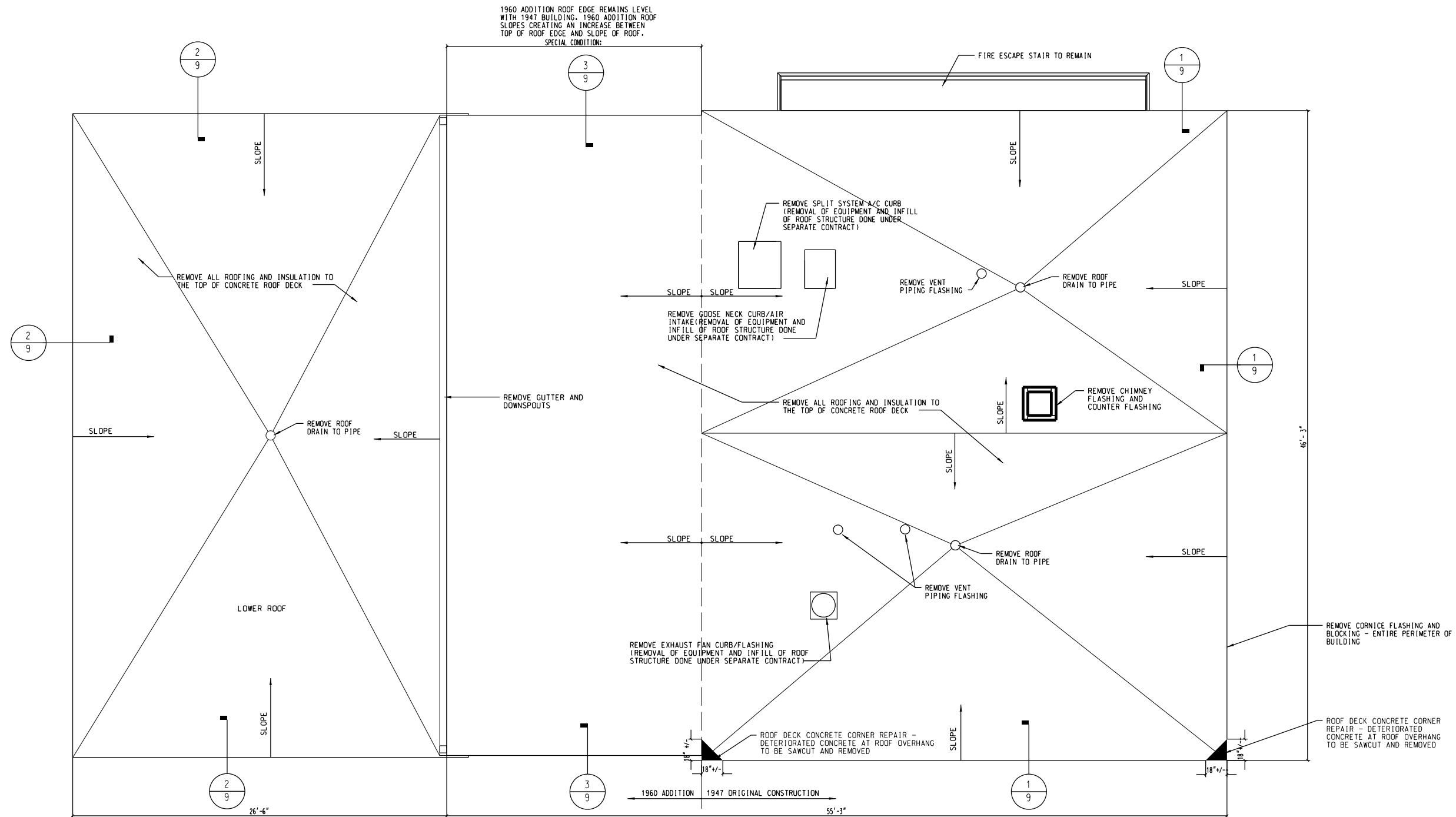
ABBREVIATIONS, SYMBOLS LEGEND AND TOTAL BILL OF MATERIALS

Scale _____ SHEET NO. 3 OF 11 SHEETS Station From _____ Station To _____

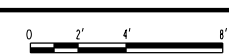
F.A.P. RTE.	SECTION	COUNTY	TOTAL SHEETS	SHEET NO.
	2012-0451	WILL	11	3
ILLINOIS FED. AID PROJECT			CONTRACT NO. 60V37	

GENERAL NOTES

1. CONTRACTOR TO FIELD VERIFY ALL DIMENSIONS.
2. CONTRACTOR IS RESPONSIBLE FOR TESTING ROOFING ELEMENTS FOR HAZARDOUS MATERIALS. SEE SPECIAL PROVISIONS.



1 ROOF PLAN - DEMOLITION
1/4" = 1'-0"



BILL OF MATERIALS		
ITEMS	UNIT	TOTAL
ROOF REPLACEMENT, LOCATION 1	LS	1
ROOFING SAMPLING AND ACM IDENTIFICATION	LS	1
HANDLING OF ASBESTOS CONTAINING MATERIALS (ACM)	LS	1



USER NAME =	DESIGNED - LOF	REVISED
	DRAWN - BRK	REVISED
PLOT SCALE =	CHECKED - EJM	REVISED
PLOT DATE = 06-28-2012	APPROVED - GLC	REVISED

STATE OF ILLINOIS
DEPARTMENT OF
TRANSPORTATION

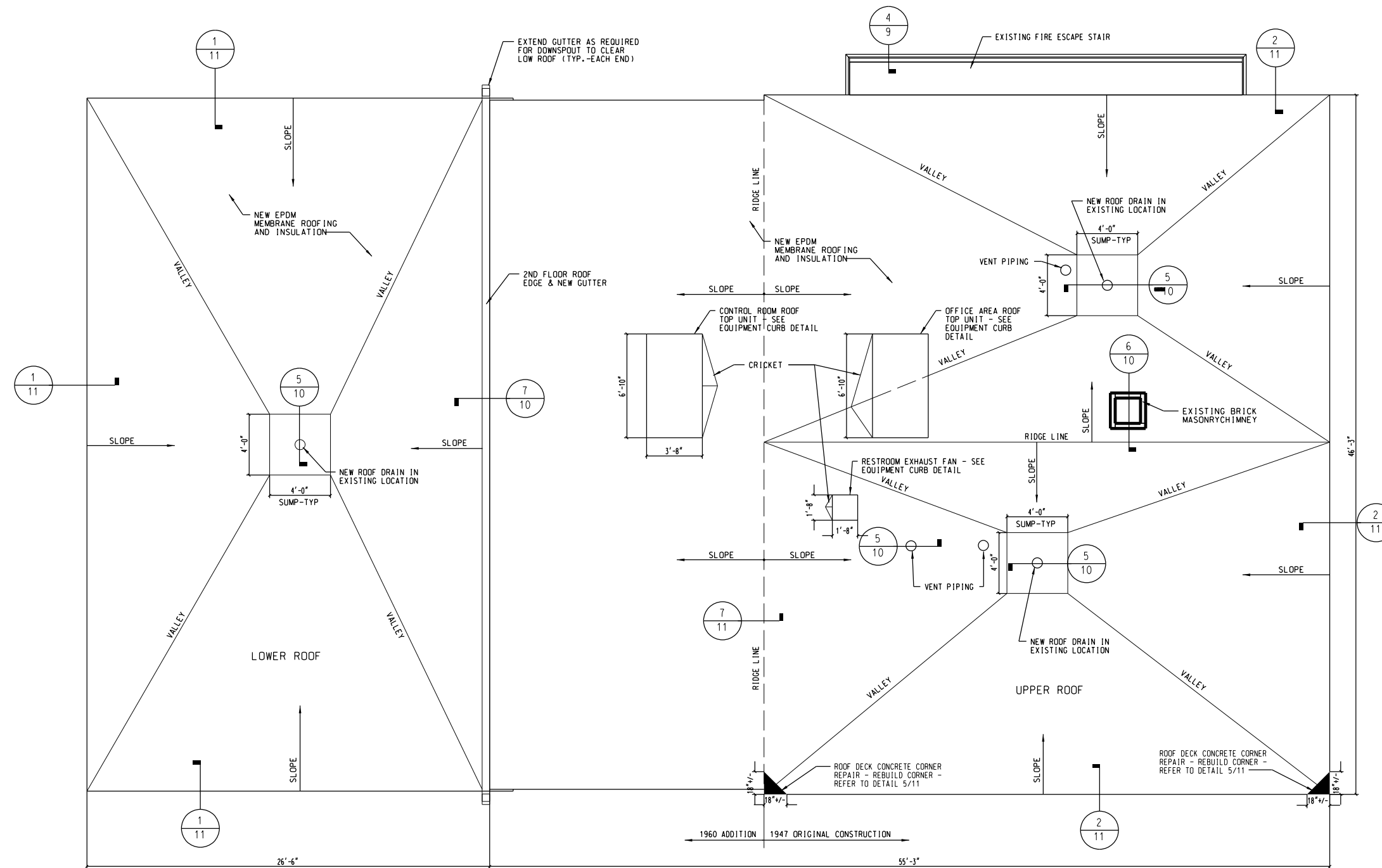
ROOF PLAN - DEMOLITION

Scale SHEET NO. 4 OF 11 SHEETS Station From Station To

F.A.P. RTE.	SECTION	COUNTY	TOTAL SHEETS	SHEET NO.
	2012-0451	WILL	11	4
ILLINOIS FED. AID PROJECT			CONTRACT NO. 60V37	

GENERAL NOTES

1. CONTRACTOR TO FIELD VERIFY ALL DIMENSIONS.
2. MINIMUM ROOF INSULATION THICKNESS = 2"
3. MINIMUM ROOF SLOPE = 1/4" PER 1'-0"



1 ROOF PLAN - NEW WORK - OPTION 1
1/4" = 1'-0"



BILL OF MATERIALS

ITEMS	UNIT	TOTAL
MOBILIZATION / STAGING	LS	1
ROOF DECK CONCRETE CORNER REPAIR	LS	1
ROOF REPLACEMENT, LOCATION 1	LS	1
ROOF DRAIN COLLECTION NETWORK	LF	88



USER NAME =	DESIGNED - LOF	REVISED
	DRAWN - BRK	REVISED
PLOT SCALE =	CHECKED - EJM	REVISED
PLOT DATE = 06-28-2012	APPROVED - GLC	REVISED

STATE OF ILLINOIS
DEPARTMENT OF
TRANSPORTATION

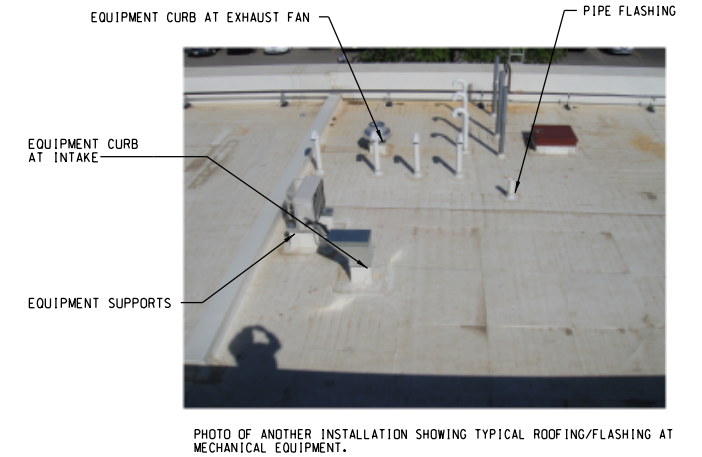
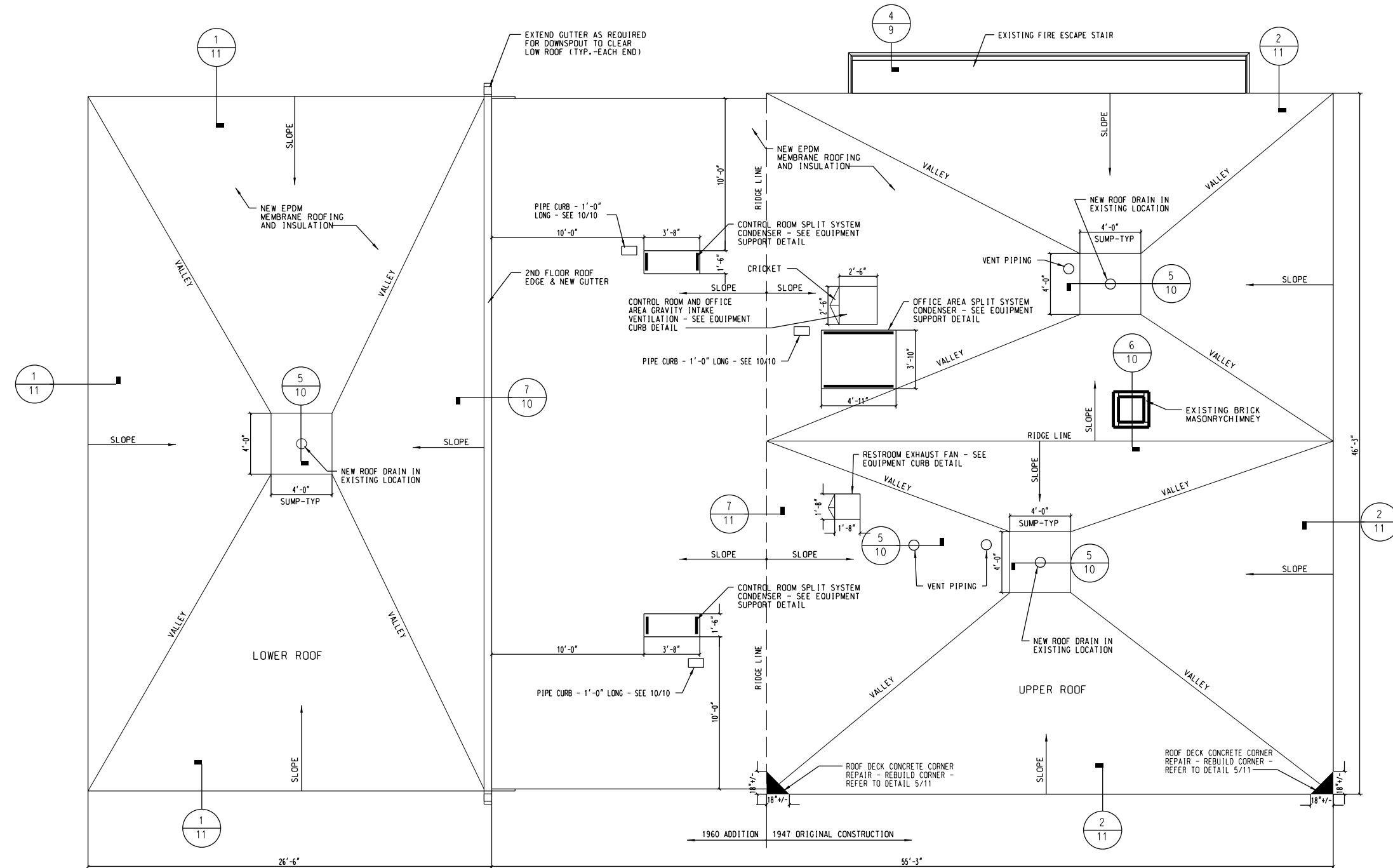
ROOF PLAN - NEW WORK - MECHANICAL OPTION 1

Scale SHEET NO. 5 OF 11 SHEETS Station From Station To

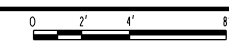
F.A.P. RTE.	SECTION	COUNTY	TOTAL SHEETS	SHEET NO.
	2012-0451	WILL	11	5
CONTRACT NO. 60V37			ILLINOIS FED. AID PROJECT	

GENERAL NOTES

1. CONTRACTOR TO FIELD VERIFY ALL DIMENSIONS.
2. MINIMUM ROOF INSULATION THICKNESS = 2"
3. MINIMUM ROOF SLOPE = 1/4" PER 1'-0"



1 ROOF PLAN - NEW WORK - OPTION 2
1/4" = 1'-0"



BILL OF MATERIALS		
ITEMS	UNIT	TOTAL
ROOF REPLACEMENT, LOCATION 1	LS	1



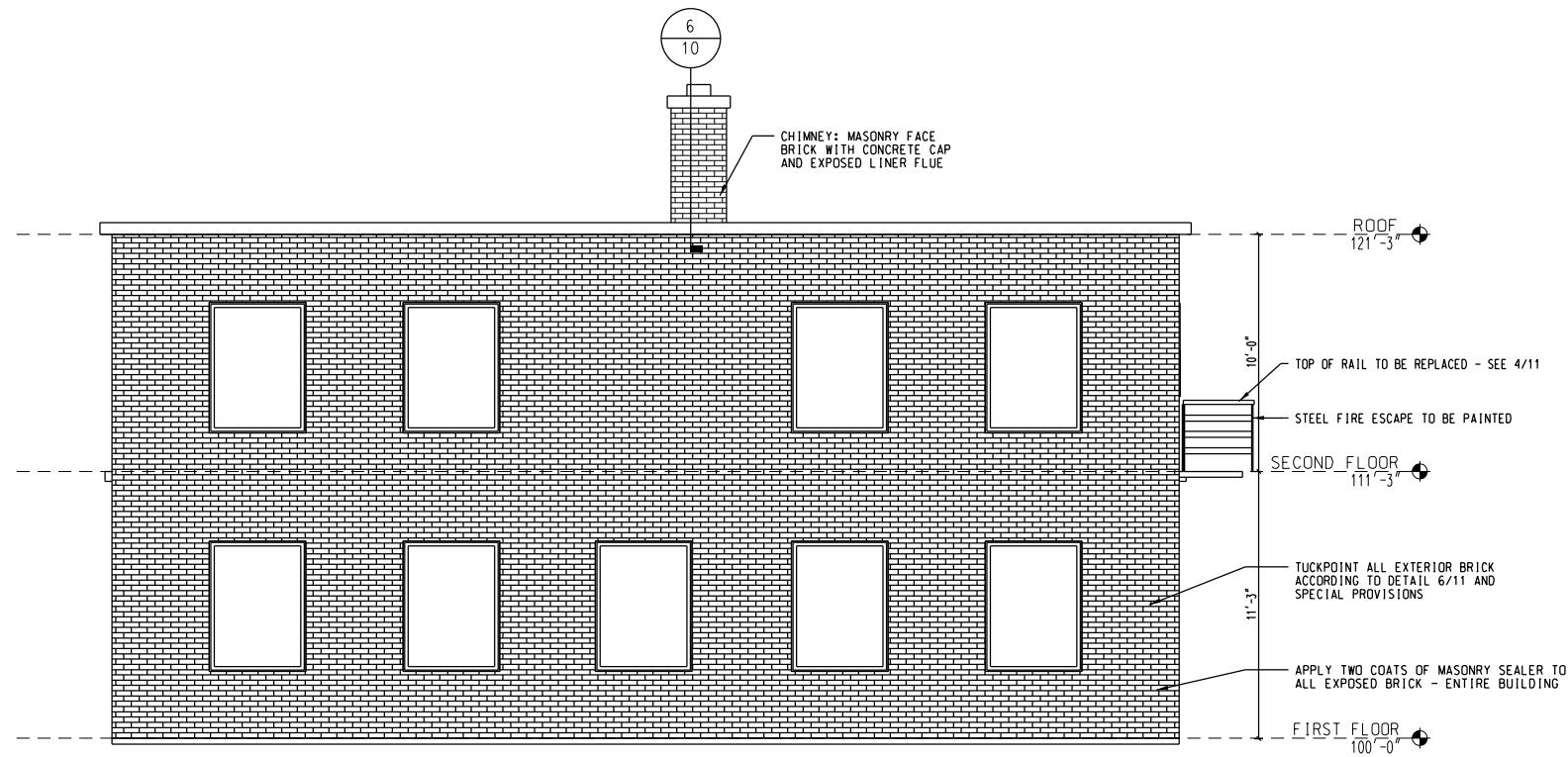
USER NAME =	DESIGNED - LOF	REVISED
	DRAWN - BRK	REVISED
PLOT SCALE =	CHECKED - EJM	REVISED
PLOT DATE = 06-28-2012	APPROVED - GLC	REVISED

STATE OF ILLINOIS
DEPARTMENT OF
TRANSPORTATION

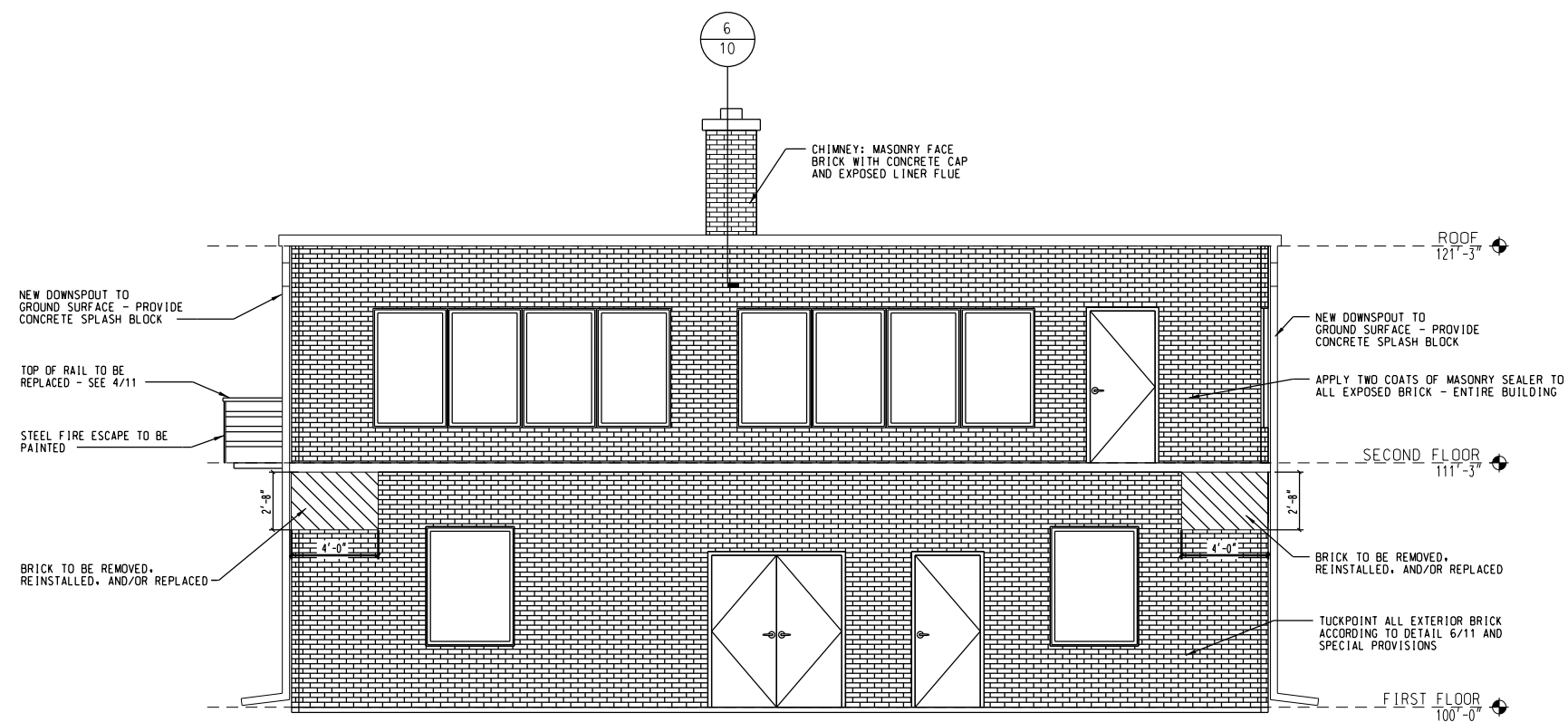
ROOF PLAN - NEW WORK - MECHANICAL OPTION 2

Scale SHEET NO. 6 OF 11 SHEETS Station From Station To

F.A.P. RTE.	SECTION	COUNTY	TOTAL SHEETS	SHEET NO.
	2012-0451	WILL	11	6
CONTRACT NO. 60V37			ILLINOIS FED. AID PROJECT	



2 SOUTH ELEVATION
1/4" = 1'-0"
0 2' 4' 8'



1 NORTH ELEVATION
1/4" = 1'-0"
0 2' 4' 8'



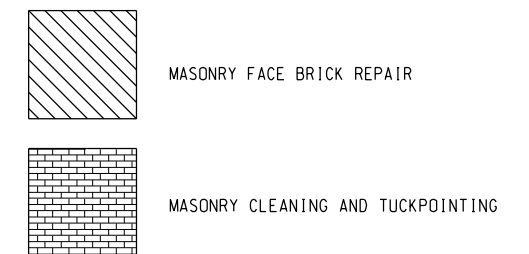
SOUTH ELEVATION



NORTH ELEVATION



EXISTING CHIMNEY



BILL OF MATERIALS		
ITEMS	UNIT	TOTAL
MASONRY FACE BRICK REPAIR	SF	60
MASONRY CLEANING AND TUCKPOINTING	SF	4,265
MASONRY SEALER	SF	4,265
MODIFICATION AND PAINTING OF FIRE ESCAPE	LS	1

NOTES: BILL OF MATERIALS IS COMBINED FOR SHEETS 7 AND 8.
ROOF DRAIN COLLECTION NETWORK (GUTTER AND DS) QUANTITY SHOWN ON ROOF PLAN



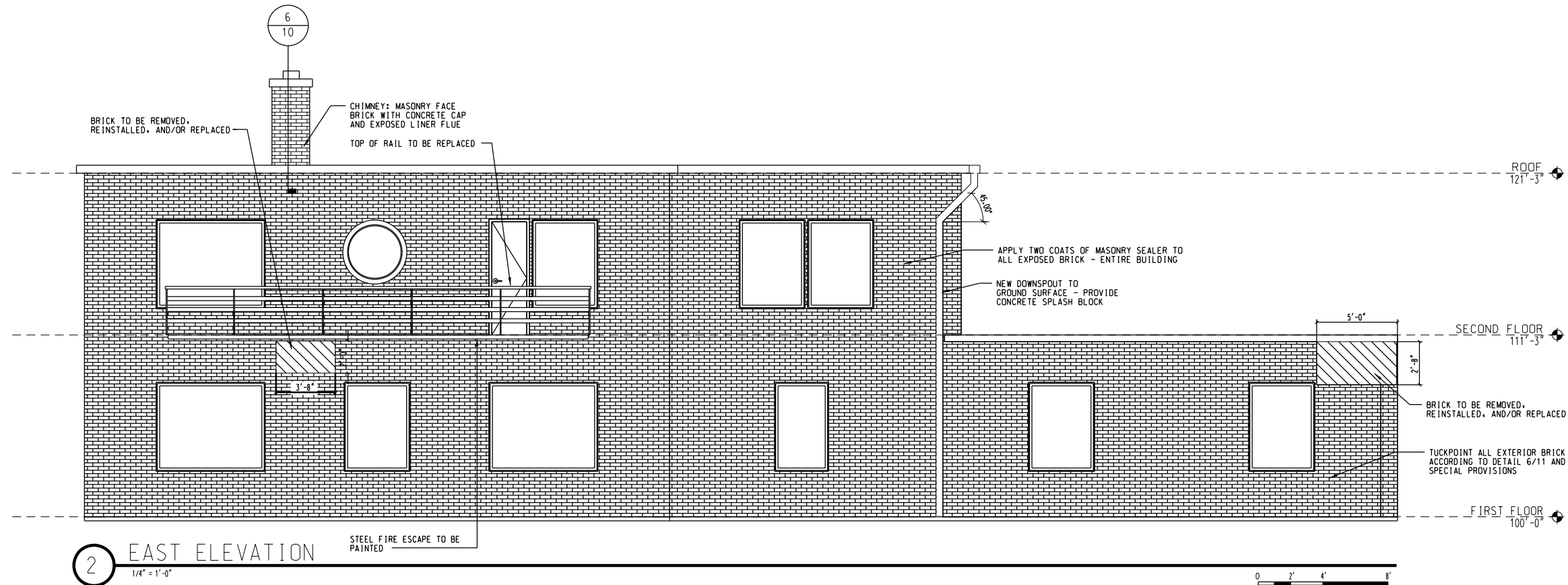
USER NAME =	DESIGNED - LOF	REVISED
	DRAWN - BRK	REVISED
PLOT SCALE =	CHECKED - EJM	REVISED
PLOT DATE = 06-28-2012	APPROVED - GLC	REVISED

STATE OF ILLINOIS
DEPARTMENT OF
TRANSPORTATION

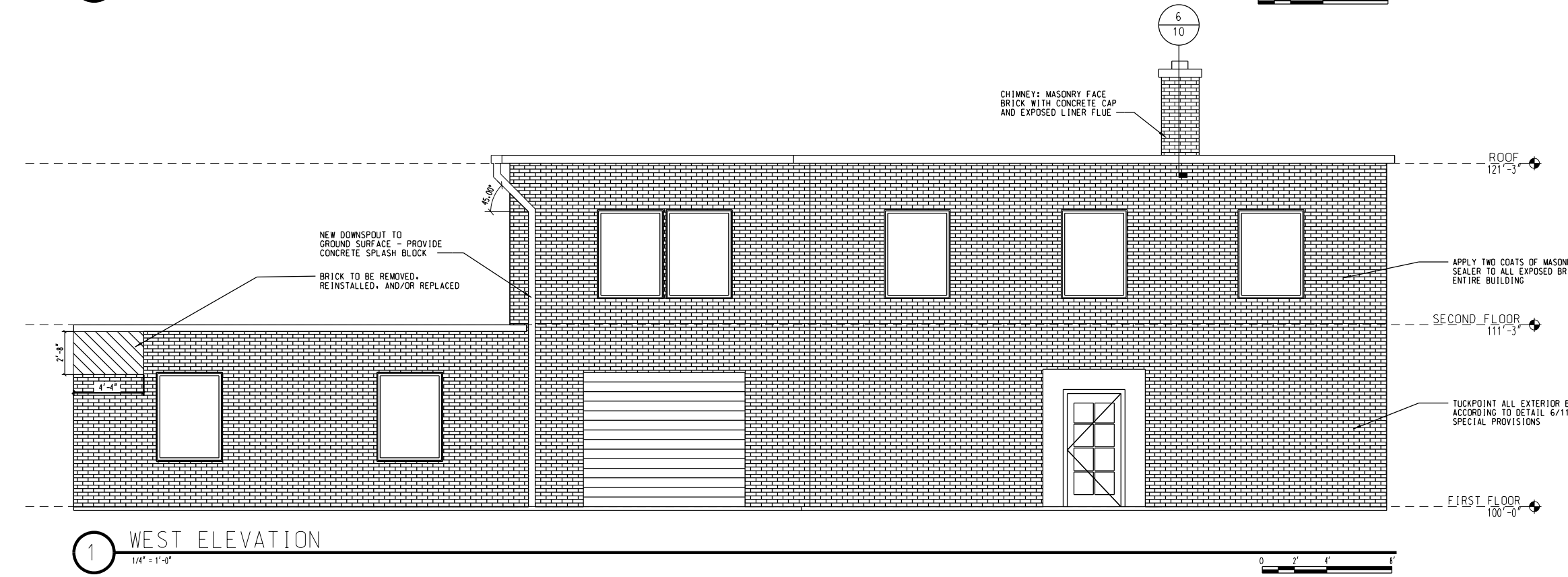
EXTERIOR ELEVATIONS

Scale SHEET NO. 7 OF 11 SHEETS Station From Station To

F.A.P. RTE.	SECTION	COUNTY	TOTAL SHEETS	SHEET NO.
	2012-0451	WILL	11	7
CONTRACT NO. 60V37			ILLINOIS FED. AID PROJECT	



2 EAST ELEVATION
1/4" = 1'-0"



1 WEST ELEVATION
1/4" = 1'-0"



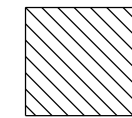
EAST ELEVATION



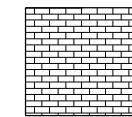
WEST ELEVATION



WEST ELEVATION



MASONRY FACE BRICK REPAIR



MASONRY CLEANING AND TUCKPOINTING

NOTE: BILL OF MATERIALS IS SHOWN ON SHEETS 7. FOR WORK DEPICTED ON SHEETS 7 AND 8.



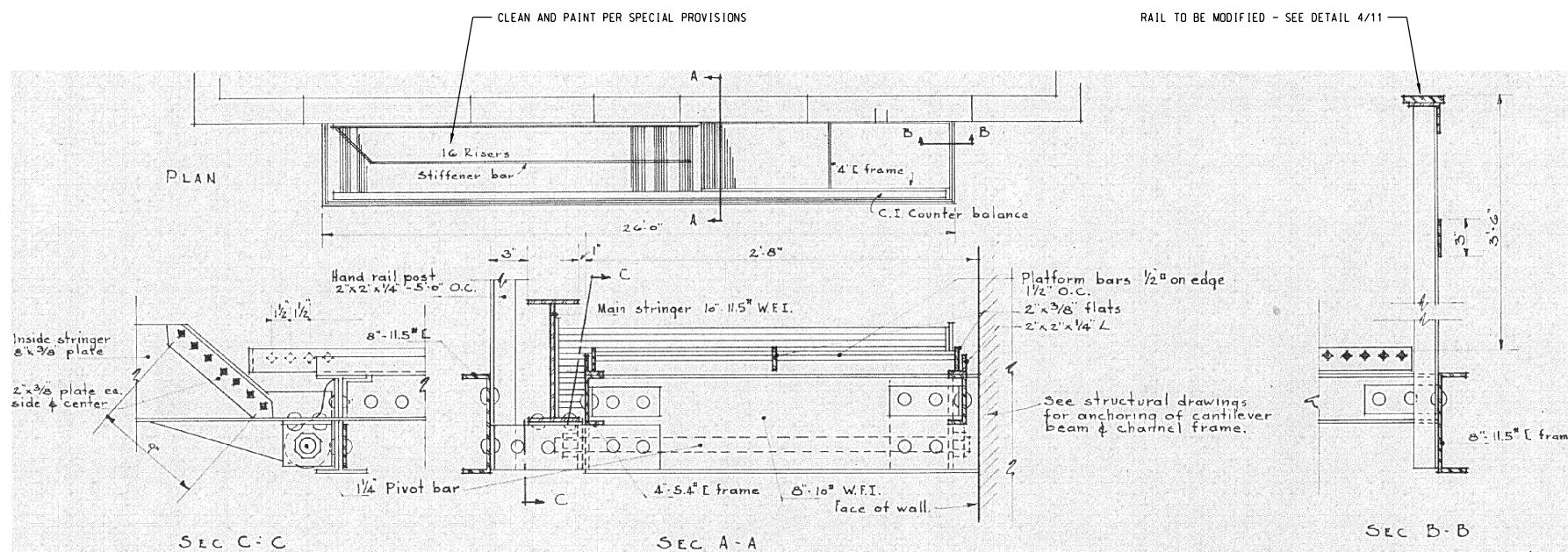
USER NAME =	DESIGNED - LOF	REVISED
	DRAWN - BRK	REVISED
PLOT SCALE =	CHECKED - EJM	REVISED
PLOT DATE = 06-28-2012	APPROVED - 06628-2012	REVISED

STATE OF ILLINOIS
DEPARTMENT OF
TRANSPORTATION

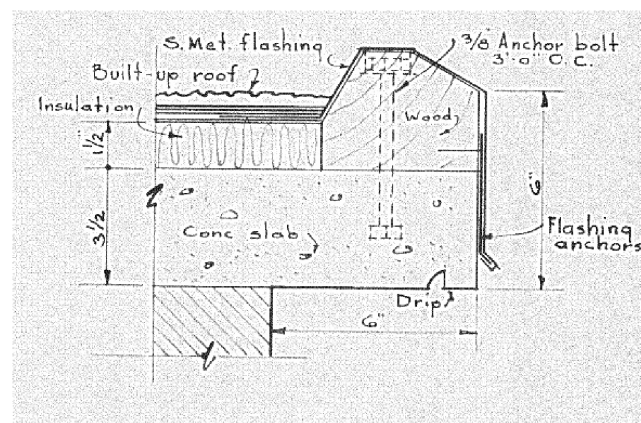
EXTERIOR ELEVATIONS

Scale SHEET NO. 8 OF 11 SHEETS Station From Station To

F.A.P. RTE.	SECTION	COUNTY	TOTAL SHEETS	SHEET NO.
	2012-0451	WILL	11	8
CONTRACT NO. 60V37			ILLINOIS FED. AID PROJECT	

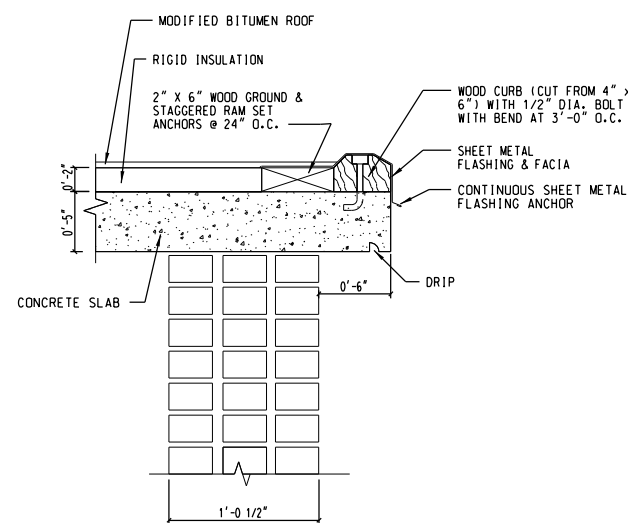


4 FIRE ESCAPE - DETAILS FROM 1947 PLANS
NOT TO SCALE

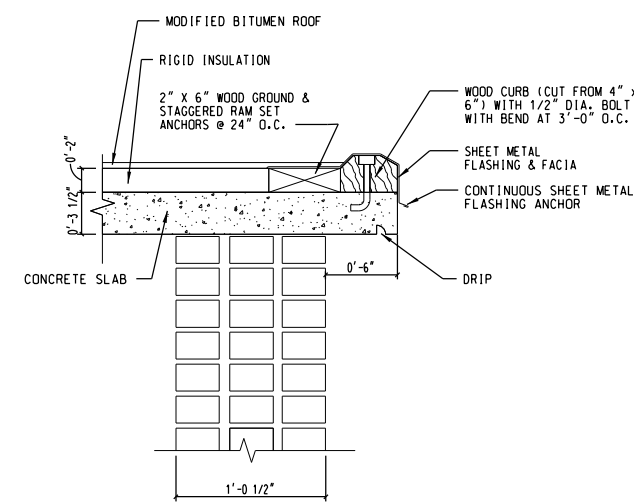


FROM 1947 PLANS - EXISTING ROOFING IS MODIFIED BITUMEN

1 1947 CORNICE DETAIL
NOT TO SCALE

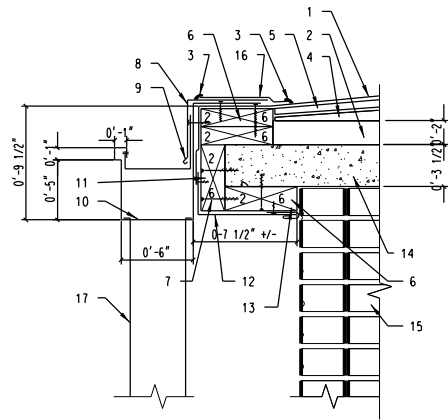


2 1960 1ST FLOOR ROOF CORNICE DETAIL
1 1/2" = 1'-0"



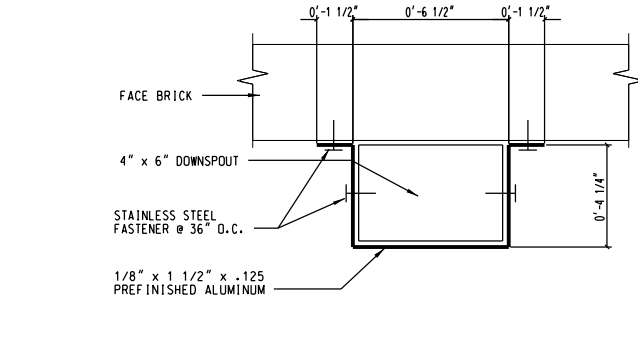
3 1960 2ND FLOOR ROOF CORNICE DETAIL
1 1/2" = 1'-0"



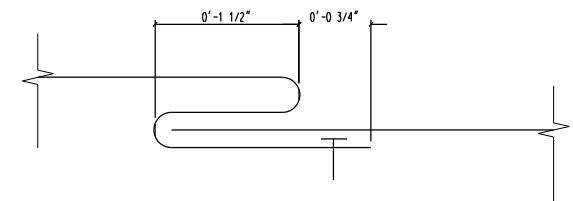


- 0.60 EPDM MEMBRANE - EXTEND OVER ROOF EDGE ONTO FASCIA COUNTER-FLASHING METAL FASCIA UNDER METAL GUTTER.
- 2" POLYISOCYANURATE ROOF INSULATION - ADHERE TO EXISTING CONCRETE ROOF SLAB.
- ROOFING SYSTEM SEALANT CONTINUOUS - PER MANUFACTURER REQUIREMENTS.
- TAPERED POLYISOCYANURATE ROOF INSULATION - ADHERE TO BASE SHEET PER MANUFACTURER'S REQUIREMENTS.
- 1/2" ROOFING CELLULOSIC-FIBER BOARD INSULATION - ADHERE TO TAPERED INSULATION PER MANUFACTURER'S REQUIREMENTS.
- #1 - 2 x 6 TREATED WOOD DECK PLATE - CONTINUOUS ALONG ROOF EDGE - ANCHOR INTO CONCRETE ROOF DECK WITH 3 1/4" x 1/4" 410 STAINLESS STEEL CONCRETE SCREW @ 12" O.C. MINIMUM AND INTO 2 x 6 WOOD FASCIA WITH #10 x 3 1/4" AUGER POINT 316 STAINLESS STEEL WOOD STAR DRIVE SCREW @ 12" O.C.
- #10 x 3 1/4" AUGER POINT 316 STAINLESS STEEL WOOD STAR DRIVE SCREW - TYPICAL SCREW FOR ANCHORING ALL WOOD INTO ADJACENT WOOD SUBSTRATES.
- 0.040 PREFINISHED ALUMINUM BREAKMETAL ROOF EDGE FLASHING - EXTEND 5" ONTO 2 x 6 ROOF EDGE SUBSTRATE - ANCHOR INTO WOOD SUBSTRATE WITH #8 x 1 1/4" STAINLESS STEEL SCREWS AT 12" O.C.
- .0125 ALUMINUM GUTTER BRACKET - ANCHOR BACKSIDE INTO 2 x 6 TREATED WOOD DECK PLATE @ 24" O.C. AND RIVET FRONT SIDE INTO FACE OF GUTTER RETURN WITH STAINLESS STEEL RIVETS.
- .050 PREFINISHED ALUMINUM GUTTER - CONTINUOUS ALONG NORTH ROOF EDGE OF UPPER ROOF - FLASHING UNDER AND ANCHORED TO CONTINUOUS TREATED WOOD SUBSTRATE @ 12" O.C.
- #1 - 2 x 6 TREATED WOOD FASCIA - CONTINUOUS ALONG ROOF EDGE FASTENED TO EDGE OF CONCRETE ROOF DECK WITH 3 1/4" x 1/4" 410 STAINLESS STEEL CONCRETE SCREW @ 12" O.C.
- .040 PREFINISHED ALUMINUM BREAKMETAL FASCIA AND SOFFIT COVER - FLASH UNDER GUTTER CONTINUOUS ALONG NORTH ROOF EDGE ON UPPER ROOF - ANCHOR INTO WOOD SUBSTRATE.
- .040 PREFINISHED ALUMINUM BREAKMETAL "J" MOLD TRIM - CONTINUOUS ALONG NORTH ROOF EDGE ON UPPER ROOF - ANCHOR INTO 2 x 6 WOOD SUBSTRATE WITH #8 x 1 1/4" STAINLESS STEEL SCREW @ 12" O.C.
- EXISTING CONCRETE ROOF DECK.
- EXISTING MASONRY FACE BRICK.
- .060 EPDM STRIP-FLASHING PER MANUFACTURER'S REQUIREMENTS.
- 4" x 6" .050 PREFINISHED ALUMINUM DOWNSPOUT - ANCHOR TO BUILDING WITH .125 ALUMINUM BRACKETS PLACED WITH NOT MORE THAN 5 FEET BETWEEN.

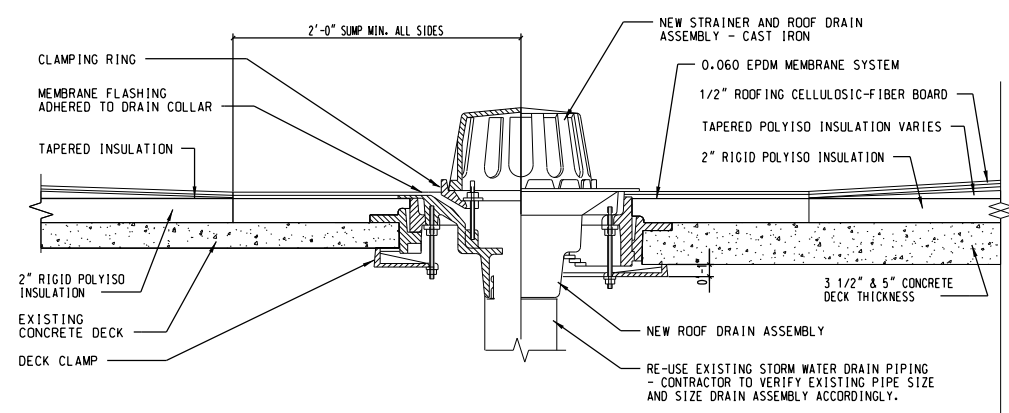
7 ROOF EDGE/GUTTER/DOWNSPOUT DETAIL
1 1/2" = 1'-0"



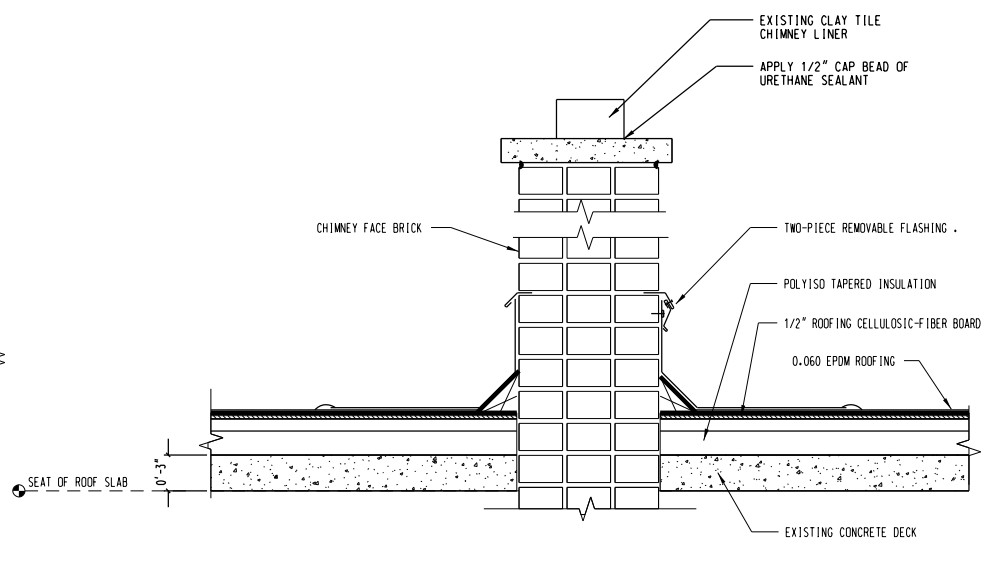
8 DOWNSPOUT STRAP DETAIL - TYP.
3' = 1'-0"



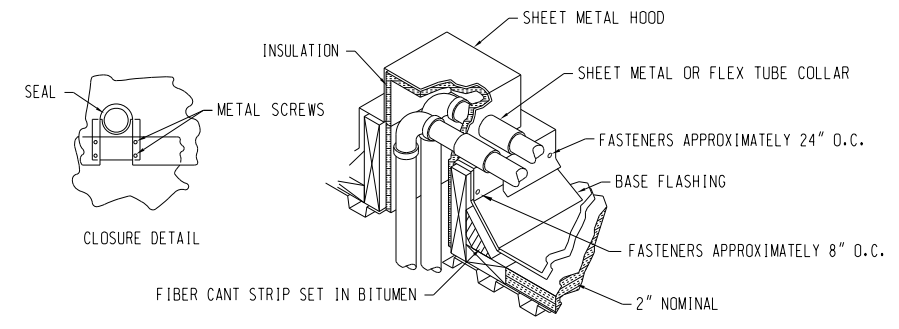
9 SHEETMETAL SPLICE DETAIL - TYP.
12" = 1'-0"



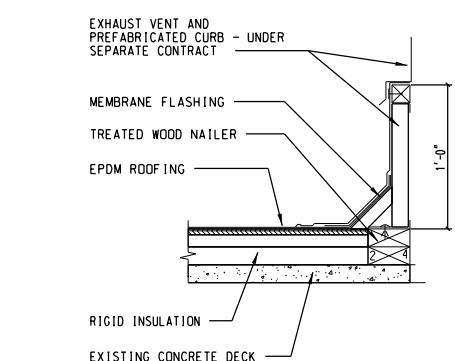
5 ROOF DRAIN - TYPICAL
1 1/2" = 1'-0"



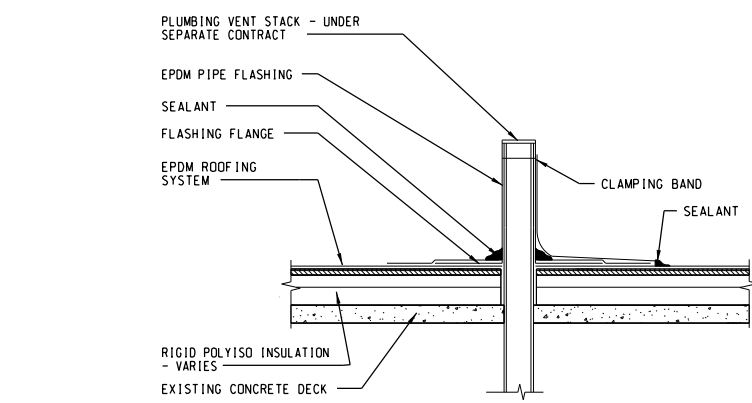
6 CHIMNEY FLASHING DETAIL - TYPICAL
1 1/2" = 1'-0"



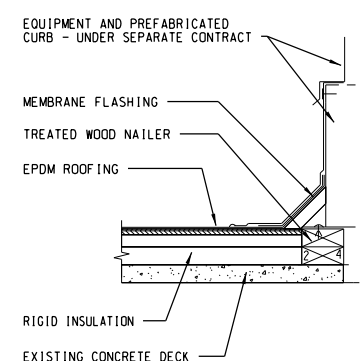
10 PIPE CURB DETAIL
NOT TO SCALE



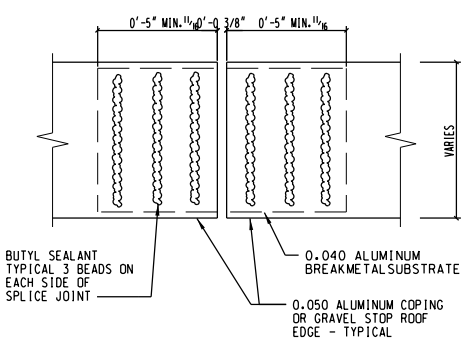
1 EXHAUST CURB FLASHING
1 1/2" = 1'-0"



2 VENT PIPE FLASHING (PRE-FAB)
1 1/2" = 1'-0"



3 EQUIPMENT CURB FLASHING
1 1/2" = 1'-0"



4 COPING/GRAVEL STOP SPLICE DETAIL - TYP.
3' = 1'-0"



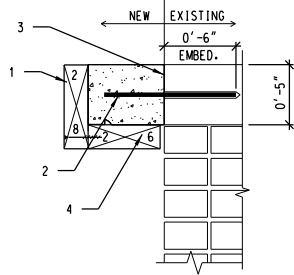
USER NAME =	DESIGNED - LOF	REVISED
PLOT SCALE =	DRAWN - BRK	REVISED
PLOT DATE = 06-28-2012	CHECKED - EJM	REVISED
	APPROVED - GLC	REVISED

STATE OF ILLINOIS
DEPARTMENT OF
TRANSPORTATION

NEW WORK DETAILS

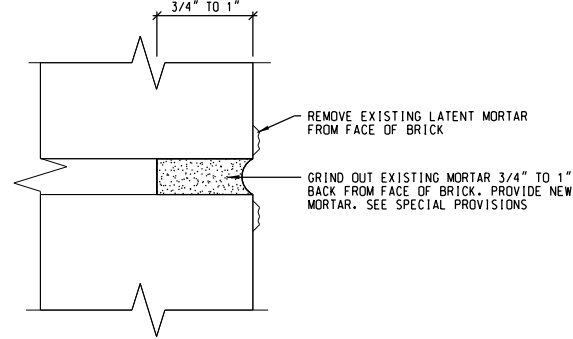
Scale SHEET NO. 10 OF 11 SHEETS Station From Station To

F.A.P. RTE.	SECTION	COUNTY	TOTAL SHEETS	SHEET NO.
	2012-0451	WILL	11	10
CONTRACT NO. 60V37			ILLINOIS FED. AID PROJECT	



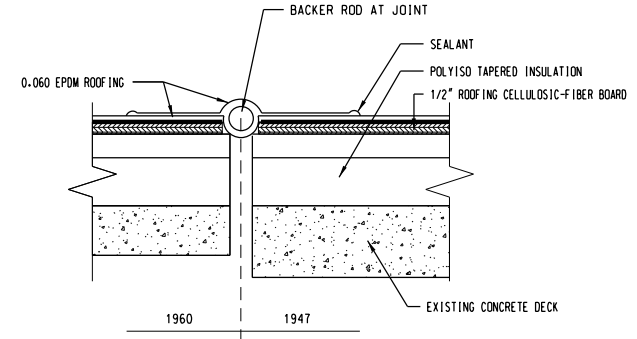
- #1 - 2 x 8 TREATED WOOD FORMWORK/FASCIA - CONTINUOUS ALONG ROOF EDGE FASTENED TO EDGE OF CONCRETE ROOF DECK WITH 3 1/4" x 1/4" 410 STAINLESS STEEL SCREWS AT 12" O.C.
- 1/2" DIA. THREADED ROD EPOXY ANCHOR AT 6" OC
- SAW-CUT FULL DEPTH
- BONDED CONSTRUCTION JOINT

5 CONCRETE OVERHANG REPAIR DETAIL



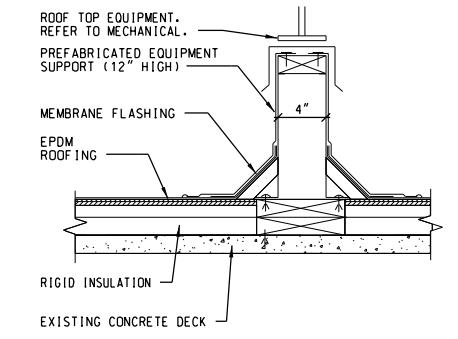
- REMOVE EXISTING LATENT MORTAR FROM FACE OF BRICK
- GRIND OUT EXISTING MORTAR 3/4" TO 1" BACK FROM FACE OF BRICK. PROVIDE NEW MORTAR. SEE SPECIAL PROVISIONS

6 TUCKPOINTING DETAIL



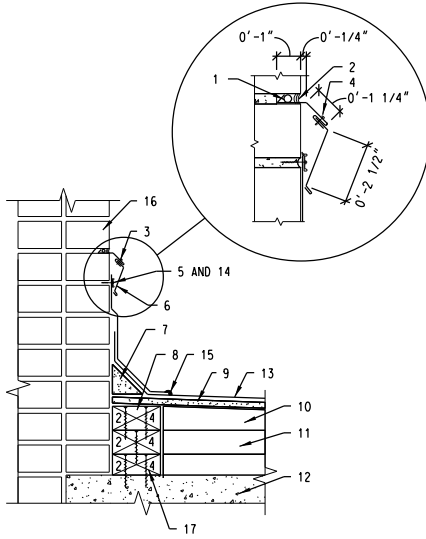
- BACKER ROD AT JOINT
- SEALANT
- POLYISO TAPERED INSULATION
- 1/2" ROOFING CELLULOSIC-FIBER BOARD
- 0.060 EPDM ROOFING
- EXISTING CONCRETE DECK

7 EXPANSION JOINT DETAIL



- ROOF TOP EQUIPMENT. REFER TO MECHANICAL.
- PREFABRICATED EQUIPMENT SUPPORT (12" HIGH)
- MEMBRANE FLASHING
- EPDM ROOFING
- RIGID INSULATION
- EXISTING CONCRETE DECK

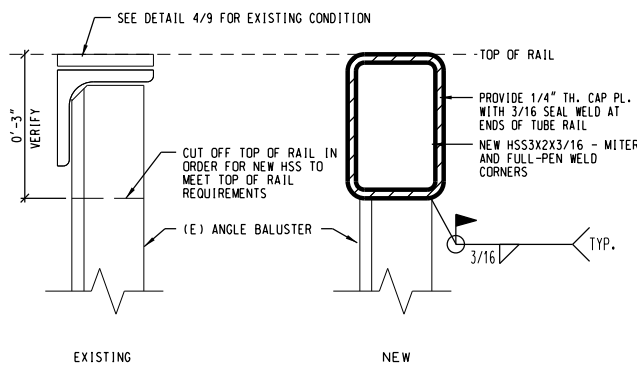
8 EQUIPMENT SUPPORT



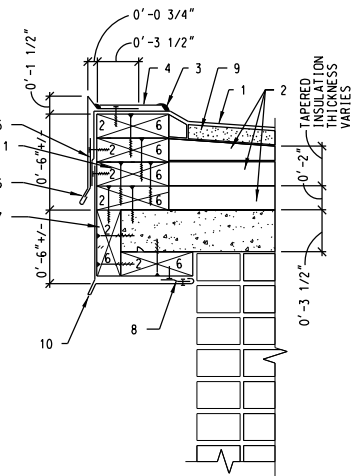
- ROLLED LEAD WEDGE / BACKER ROD - SPACE ROLLED LEAD WEDGE AT 30" MAXIMUM TYPICAL - PLACE BACKER ROD BETWEEN WEDGES CONTINUOUS.
- ELASTOMERIC JOINT SEALANT - POLYURETHANE SEALANT CONTINUOUS AND TOOLED SMOOTH.
- PREFINISHED METAL WALL FLASHING RECEIVER - INSERTED INTO CUT REGLET IN MASONRY MORTAR JOINT CUT 1" DEEP MIN. - THIS RECEIVER IS TO BE PERMANENT.
- #6 3/4" PAN HEAD STAINLESS STEEL SHEETMETAL SCREW - INSERT SCREW INTO METAL RECEIVER AT 30" MAXIMUM TYPICAL.
- TERMINATION BAR - CONTINUOUS ALONG ROOFING MEMBRANE - APPLY MANUFACTURER APPROVED CAP BEAD OF SEALANT CONTINUOUS ALONG TOP EDGE OF TERMINATION BAR AND INSTALL SEALANT BETWEEN MEMBRANE AND MASONRY SUBSTRATE.
- PREFINISHED METAL REMOVABLE WALL COUNTER-FLASHING - INSERT INTO RECEIVER PORTION COVERING ROOFING TERMINATION BAR.
- FIBER CANT - AS REQUIRED BY ROOFING MANUFACTURER.

3 TWO-PIECE REMOVEABLE COUNTER-FLASHING - TYP.

- #2 - 2 x 4 TREATED WOOD DECK PLATE - INSTALL WITH STAINLESS STEEL SCREWS - MATCH ROOF INSULATION THICKNESS.
- 1/2" BC PLYWOOD RIPPER - CONTINUOUS ALONG NORTH ROOF EDGE ON UPPER ROOF - ANCHOR INTO 2 x 4 WOOD SUBSTRATE.
- TAPERED POLYISOCYANURATE ROOF INSULATION - ADHERED TO BASE SHEET PER MANUFACTURER REQUIREMENTS.
- 2" POLYISOCYANURATE ROOF INSULATION - ADHERE TO EXISTING CONCRETE ROOF DECK.
- EXISTING CONCRETE ROOF DECK.
- 0.60 EPDM MEMBRANE - EXTEND UP WALL AND OR CHIMNEY AND TERMINATE WITH TERMINATION BAR AS REQUIRED BY MANUFACTURER.
- 1/4" x 1 1/2" HEX STAINLESS STEEL CONCRETE SCREW - INSTALL THRU TERMINATION BAR INTO MASONRY MORTAR JOINT.
- ROOFING SYSTEM SEALANT - CONTINUOUS PER MANUFACTURER REQUIREMENTS.
- EXISTING MASONRY FACE BRICK.
- TREATED PLYWOOD AS REQUIRED TO ACHIEVE SPECIFIED ROOF SLOPE.

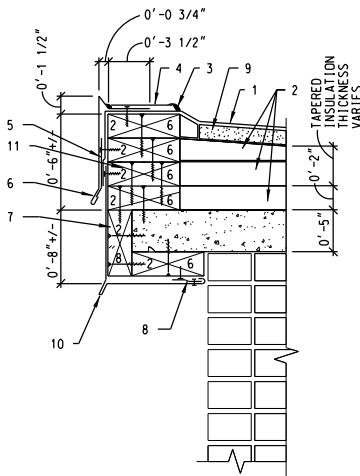


4 RAIL REPLACEMENT DETAIL



- 0.60 EPDM MEMBRANES - EXTEND OVER ROOF EDGE 2 x 6 WOOD BLOCKING AND LAP OVER METAL FASCIA COVER.
- 2" POLYISOCYANURATE ROOF INSULATION AND TAPERED POLYISOCYANURATE ROOF INSULATION - ADHERE TO EXISTING CONCRETE ROOF DECK AND ADJACENT LAYERS OF TAPERED. BUILD UP AT 30 DEGREES BETWEEN VARIANCES BETWEEN TOP OF METAL LEVEL GRAVEL STOP AND 2" RIGID BASE INSULATION SHEET ON 1960 ADDITION SINGLE SLOPED ROOF.
- ROOF SYSTEM SEALANT CONTINUOUS - PER MANUFACTURER REQUIREMENTS.
- 0.060 EPDM STRIP-FLASHING PER MANUFACTURER REQUIREMENTS.
- .040 ALUMINUM BREAKMETAL CONTINUOUS CLEAT - ANCHOR INTO WOOD SUBSTRATE WITH #8 1 1/4" STAINLESS STEEL SCREWS AT 12" O.C.

1 3 1/2" ROOF EDGE DETAIL



- 0.60 EPDM MEMBRANES - EXTEND OVER ROOF EDGE 2 x 6 WOOD BLOCKING AND LAP OVER METAL FASCIA COVER.
- 2" POLYISOCYANURATE ROOF INSULATION AND TAPERED POLYISOCYANURATE ROOF INSULATION - ADHERE TO EXISTING CONCRETE ROOF DECK AND ADJACENT LAYERS OF TAPERED. BUILD UP AT 30 DEGREES BETWEEN VARIANCES BETWEEN TOP OF METAL LEVEL GRAVEL STOP AND 2" RIGID BASE INSULATION SHEET ON 1960 ADDITION SINGLE SLOPED ROOF.
- ROOF SYSTEM SEALANT CONTINUOUS - PER MANUFACTURER REQUIREMENTS.
- 0.060 EPDM STRIP-FLASHING PER MANUFACTURER REQUIREMENTS.
- .040 ALUMINUM BREAKMETAL CONTINUOUS CLEAT - ANCHOR INTO WOOD SUBSTRATE WITH #8 1 1/4" STAINLESS STEEL SCREWS AT 12" O.C.

2 5" ROOF EDGE DETAIL



USER NAME =	DESIGNED - LOF	REVISED
PLOT SCALE =	DRAWN - BRK	REVISED
PLOT DATE = 06-28-2012	CHECKED - EJM	REVISED
	APPROVED - GLC	REVISED

STATE OF ILLINOIS
DEPARTMENT OF
TRANSPORTATION

NEW WORK DETAILS

Scale SHEET NO. 11 OF 11 SHEETS Station From Station To

F.A.P. RTE.	SECTION	COUNTY	TOTAL SHEETS	SHEET NO.
	2012-0451	WILL	11	11
ILLINOIS FED. AID PROJECT			CONTRACT NO. 60V37	