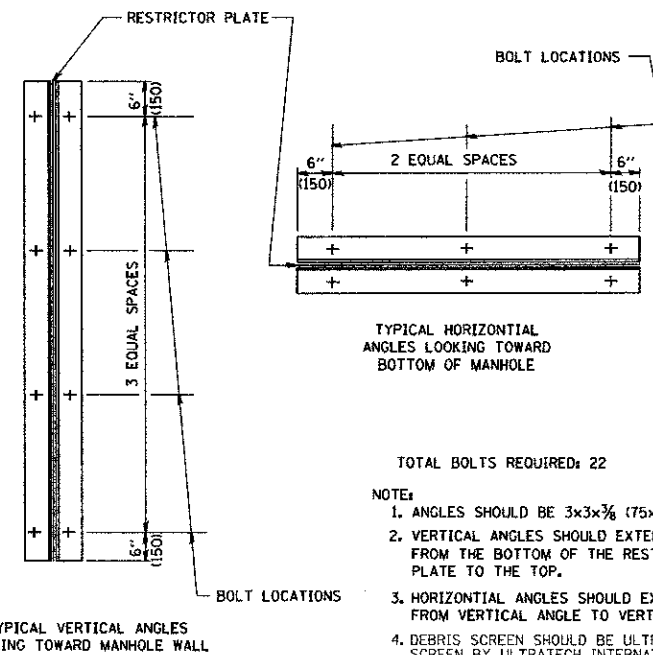


- NOTES:
1. ALL STEEL ANGLES AND PLATES TO BE GALVANIZED AFTER FABRICATION.
 2. ALL RESTRICTOR PLATES, ANGLES AND HARDWARE TO BE INCLUDED IN THE COST OF THE MANHOLE.
 3. BASIS OF PAYMENT: "MANHOLES, TYPE A, 6 FT. (1.8 m)-DIAMETER, TYPE I FRAME, CLOSED LID, RESTRICTOR PLATE" EACH

ROUTE (ST#)	STATION	MANHOLE DIAMETER (FEET)	FRAME AND GRATE	RESTRICTOR TYPE	INSIDE RESTRICTOR DIAMETER - STAGE 1 (INCHES) d1	INVERT OF RESTRICTOR DIAMETER - STAGE 1	INSIDE RESTRICTOR DIAMETER - STAGE 2 (INCHES) d2	INVERT OF RESTRICTOR DIAMETER - STAGE 2	ELEVATION OF TOP OF PLATE
MILLER ROAD (159)	580+00.00 LT	8	TIF CL	2	2-1/4	739.40	4	741.25	744.00



- TOTAL BOLTS REQUIRED: 22
- NOTE:
1. ANGLES SHOULD BE 3x3x3/8 (75x75x75)
 2. VERTICAL ANGLES SHOULD EXTEND FROM THE BOTTOM OF THE RESTRICTOR PLATE TO THE TOP.
 3. HORIZONTAL ANGLES SHOULD EXTEND FROM VERTICAL ANGLE TO VERTICAL ANGLE.
 4. DEBRIS SCREEN SHOULD BE ULTRA-DEBRIS SCREEN BY ULTRATECH INTERNATIONAL (OR EQUAL) WWW.SPILLCONTAINMENT.COM/DEBRIS-SCREEN

RESTRICTOR TYPE					
1	2	3	4	5	6
RE-ENTRANT TUBE	SHARP EDGED	SQUARE EDGED	RE-ENTRANT TUBE	SQUARE EDGED	ROUNDED
LENGTH: 1/2 TO 1 DIA.		STREAM CLEARS SIDES	LENGTH: 2-1/2 DIA.	LENGTH: 2-1/2 DIA.	
C=.52	C=.61	C=.61	C=.73	C=.82	C=.98

VALUES OF "C" FOR CIRCULAR AND SQUARE ORIFICES

COMPANY NAME: HRGreen
 PROJECT CONTACT: HRGreen.com
 CLIENT: HRGreen Professional Design Firm # 104-001322
 DATE PLOTTED: 9/6/2012 8:07:19 AM
 FILE NAME: 090071-de-06.dgn
 PLOT DRIVER: pdf2dwt
 PLOT TABLE: sfstandard-trans.tbl

HRGreen
 HRGreen.com
 HRGreen Professional Design Firm
 # 104-001322

USER NAME = charlie	DESIGNED - JPA	REVISED -
FILE NAME = 090071-de-06.dgn	DRAWN - JPA	REVISED -
PLOT SCALE = N.T.S.	CHECKED - JLP	REVISED -
PLOT DATE = 9/6/2012	DATE - 8/24/12	REVISED -

**MCHENRY COUNTY
 DIVISION OF TRANSPORTATION**

SCALE: NONE.	SHEET NO. OF SHEETS	STA. TO STA.
--------------	---------------------	--------------

MANHOLE WITH RESTRICTOR PLATE

F.A.U. RTE. 3860	SECTION 09-00372-00-PW	COUNTY MCHENRY	TOTAL SHEETS 252	SHEET NO. 188
FED. ROAD DIST. NO. ILLINOIS FED. AID PROJECT			CONTRACT NO. 63633	

8/27/2012

ALL DIMENSIONS ARE IN INCHES (MILLIMETERS) UNLESS OTHERWISE SHOWN.