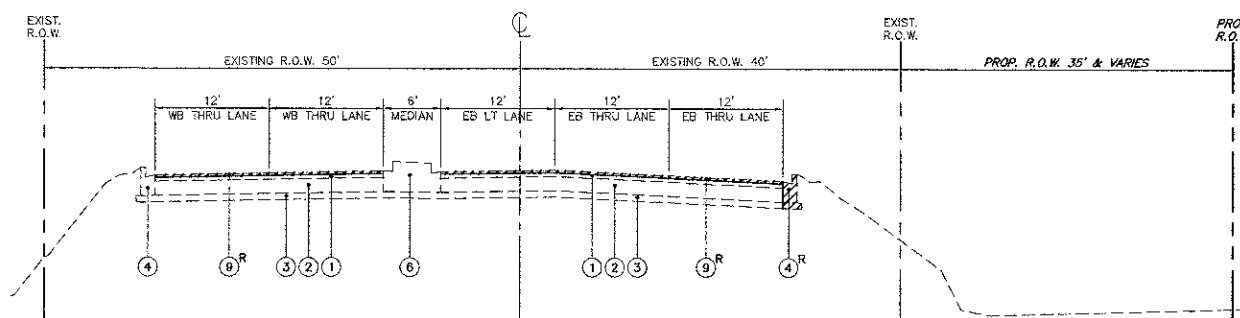
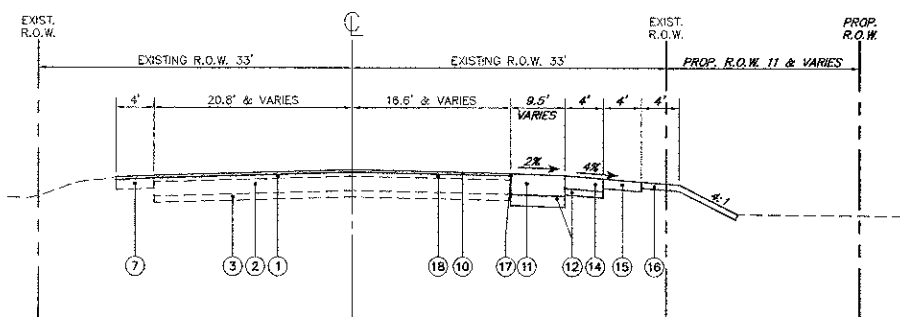


TYPICAL EXISTING CROSS SECTION - BIG TIMBER ROAD
FROM STA. 197+66 TO STA. 199+86
SHOWN AT STA. 199+00

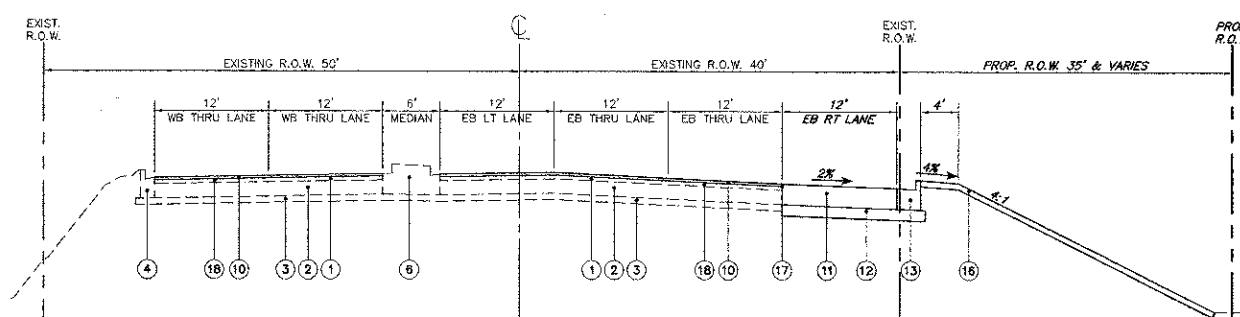


TYPICAL EXISTING CROSS SECTION - BIG TIMBER ROAD
FROM STA. 203+05 TO STA. 205+43
SHOWN AT STA. 204+00

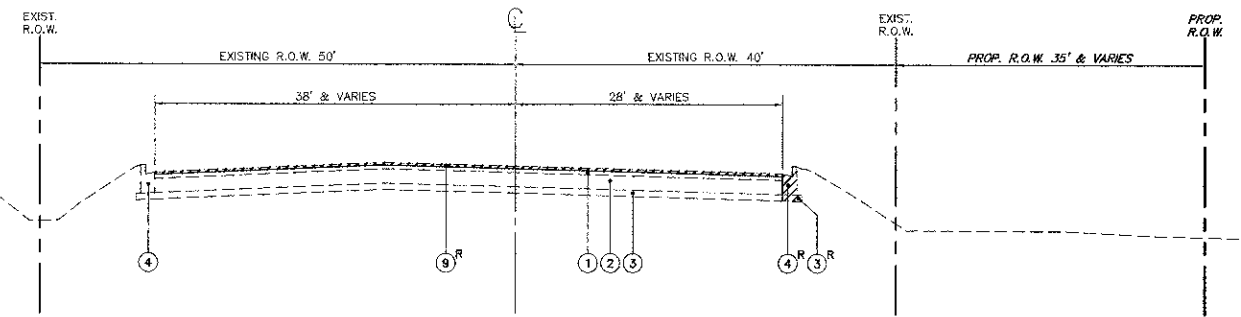
- TYPICAL CROSS SECTION LEGEND**
- NO DESCRIPTION
 - ① EXISTING BITUMINOUS SURFACE 4"
 - ② EXISTING BITUMINOUS BASE COURSE 9"
 - ③ EXISTING SUB-BASE GRANULAR MATERIAL 4"
 - ④ EXISTING CURB AND GUTTER, TYPE B-6.12
 - ⑤ EXISTING CURB AND GUTTER, TYPE B-6.24
 - ⑥ EXISTING CONCRETE MEDIAN
 - ⑦ EXISTING BITUMINOUS SHOULDER 8"
 - ⑧ EXISTING AGGREGATE SHOULDER 6"
 - ⑨ HOT-MIX ASPHALT SURFACE REMOVAL 2-1/4"
 - ⑩ PROPOSED HOT-MIX ASPHALT SURFACE COURSE, MIX D, N70, 1-1/2"
 - ⑪ PROPOSED HOT-MIX ASPHALT PAVEMENT (FULL DEPTH), 12 1/2"
 - ⑫ PROPOSED AGGREGATE SUBGRADE, 12"
 - ⑬ PROPOSED COMBINATION CURB AND GUTTER, TYPE B-6.24
 - ⑭ PROPOSED HOT-MIX ASPHALT SHOULDER, 8"
 - ⑮ PROPOSED AGGREGATE SHOULDER, TYPE B, 8"
 - ⑯ PROPOSED TOPSOIL, FURNISH AND PLACE 6", SEEDING CLASS 2A, EROSION CONTROL BLANKET
 - ⑰ STRIP REFLECTIVE CRACK CONTROL TREATMENT
 - ⑱ PROPOSED LEVELING BINDER (MACHINE METHOD), N70, 3/4"
 - X ITEM TO BE REMOVED



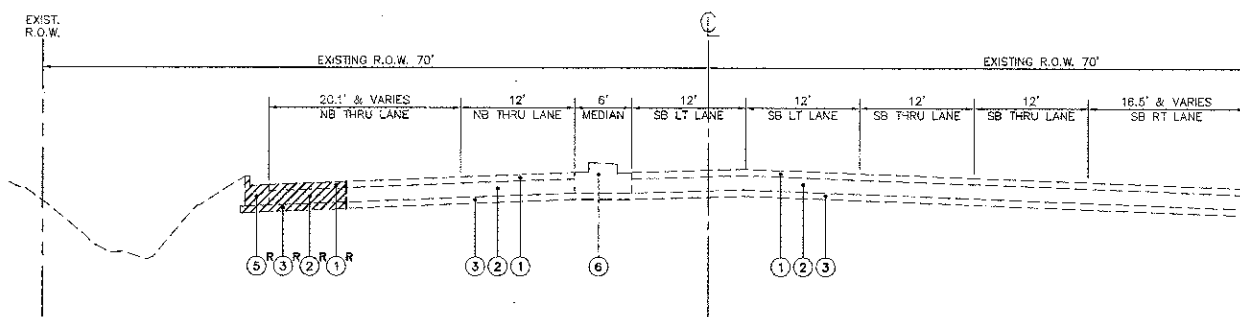
TYPICAL PROPOSED CROSS SECTION - BIG TIMBER ROAD
FROM STA. 197+66 TO STA. 199+86
SHOWN AT STA. 199+00



TYPICAL PROPOSED CROSS SECTION - BIG TIMBER ROAD
FROM STA. 203+05 TO STA. 205+43
SHOWN AT STA. 204+00

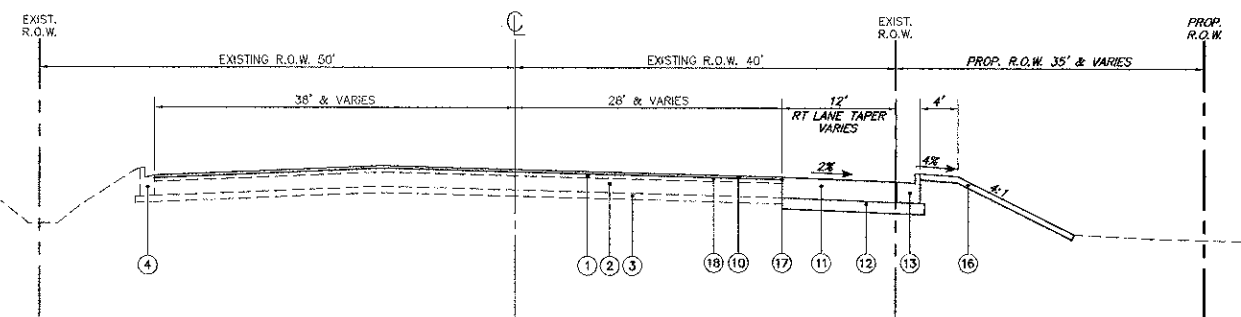


TYPICAL EXISTING CROSS SECTION - BIG TIMBER ROAD
FROM STA. 199+86 TO STA. 203+05
SHOWN AT STA. 202+50

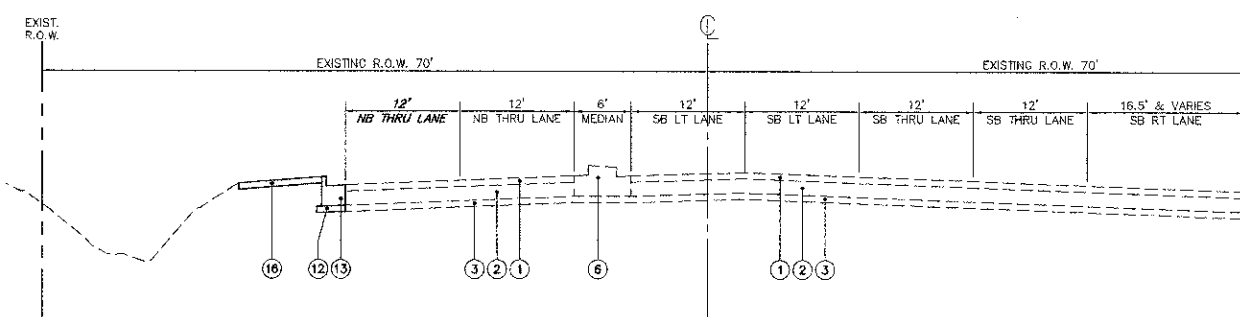


TYPICAL EXISTING CROSS SECTION - RANDALL ROAD
FROM STA. 137+57 TO STA. 140+90
SHOWN AT STA. 138+50

NOTE:
RANDALL ROAD
CROSS SECTION IS FROM THE
NORTH LOOKING TO THE SOUTH



TYPICAL PROPOSED CROSS SECTION - BIG TIMBER ROAD
FROM STA. 199+86 TO STA. 203+05
SHOWN AT STA. 202+50



TYPICAL PROPOSED CROSS SECTION - RANDALL ROAD
FROM STA. 137+57 TO STA. 140+90
SHOWN AT STA. 138+50

NOTE:
RANDALL ROAD
CROSS SECTION IS FROM THE
NORTH LOOKING TO THE SOUTH

FILE NAME = 4459.D00-PR3.dwg	USER NAME = BETHANY SUMINSKI	DESIGNED - K.L.B.	REVISED -	STATE OF ILLINOIS DEPARTMENT OF TRANSPORTATION	TYPICAL SECTIONS BIG TIMBER ROAD			FAP RTE 527	SECTION 08-00369-00-SP	COUNTY KANE	TOTAL SHEETS 67	SHEET NO. 5
	PLOT SCALE = 1" = .0833'	DRAWN - P.J.S.	REVISED -		SCALE 1"=10'	SHEET NO.	OF SHEETS	STA.	TO STA.	CONTRACT # 63669		
	PLOT DATE = 3/21/2012	CHECKED - K.L.B.	REVISED -							ILLINOIS FED. AID PROJECT		
		DATE - 3/21/2012	REVISED -									