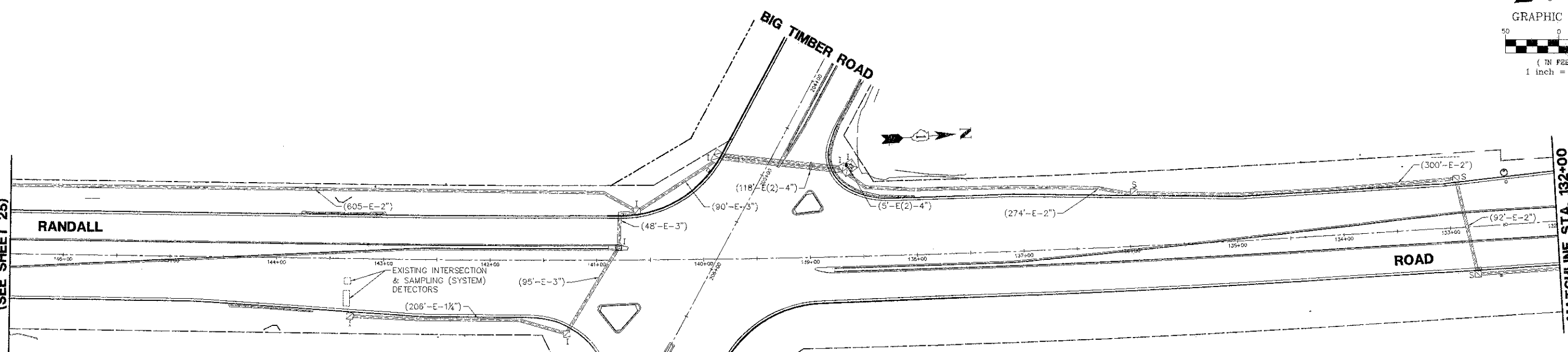


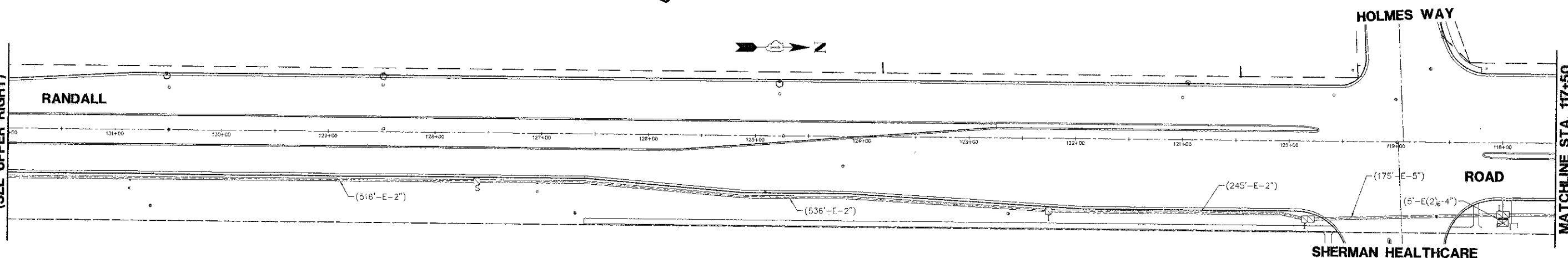
MATCHLINE STA. 146+50
(SEE SHEET 25)



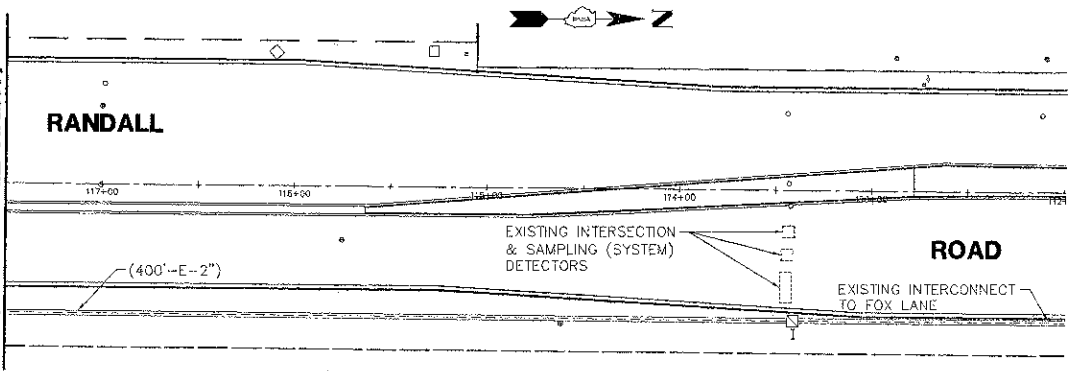
CONSTRUCTION NOTES:

- ① THE CONTRACTOR SHALL REINSTALL THE EXISTING COILED FIBER OPTIC AN TRACER CABLES IN THE NEW OR EXISTING CONDUIT TO THE NEW CONTROLLER CABINET.

MATCHLINE STA. 132+00
(SEE UPPER RIGHT)



MATCHLINE STA. 117+50
(SEE MIDDLE RIGHT)



THE TRAFFIC SIGNAL CONTROL EQUIPMENT FOR THIS PROJECT SHALL BE SIEMENS M-50 SERIES IP ACCESSIBLE VIA ETHERNET TO THE KDOT ATMS TO MATCH THE EXISTING ADJACENT SYSTEM.

FILE NAME = 4459.000-TR1.dwg	USER NAME = ZACH WALLSTEN	DESIGNED - JRD	REVISED -	STATE OF ILLINOIS DEPARTMENT OF TRANSPORTATION	INTERCONNECT PLAN (SHEET 2 OF 2) BIG TIMBER ROAD (CH 21) AT RANDALL ROAD (CH 34)			F.A.P. RTE. 527	SECTION 08-00369-00-SP	COUNTY KANE	TOTAL SHEETS 67	SHEET NO. 26
PLOT SCALE = 1" = .0633'	CHECKED - KLB	DATE - 3/21/2012	REVISED -		SCALE 1" = 50'	SHEET NO. OF SHEETS	STA. TO STA.	CONTRACT #: 63669				
PLOT DATE = 3/21/2012	DATE - 3/21/2012	REVISED -	REVISED -		ILLINOIS FED. AID PROJECT							
GHA #4459.000												