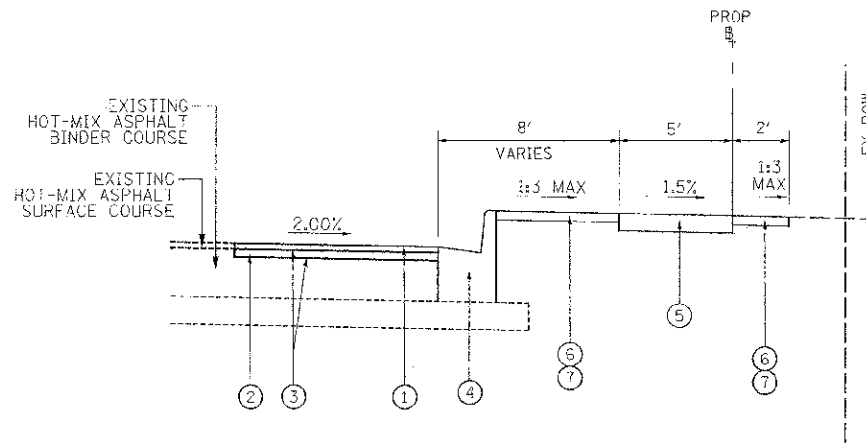


PROPOSED TYPICAL SECTION
N.T.S.

STA. 10+18.05 TO STA. 11+69.19, SOUTHWEST HWY
 STA. 15+53.12 TO STA. 20+07.82, SOUTHWEST HWY
 STA. 21+21.37 TO STA. 23+85, SOUTHWEST HWY
 STA. 27+20 TO STA. 27+54.57, SOUTHWEST HWY



PROPOSED TYPICAL SECTION
N.T.S.

STA. 20+07.82 TO STA. 21+21.37, SOUTHWEST HWY

LEGEND

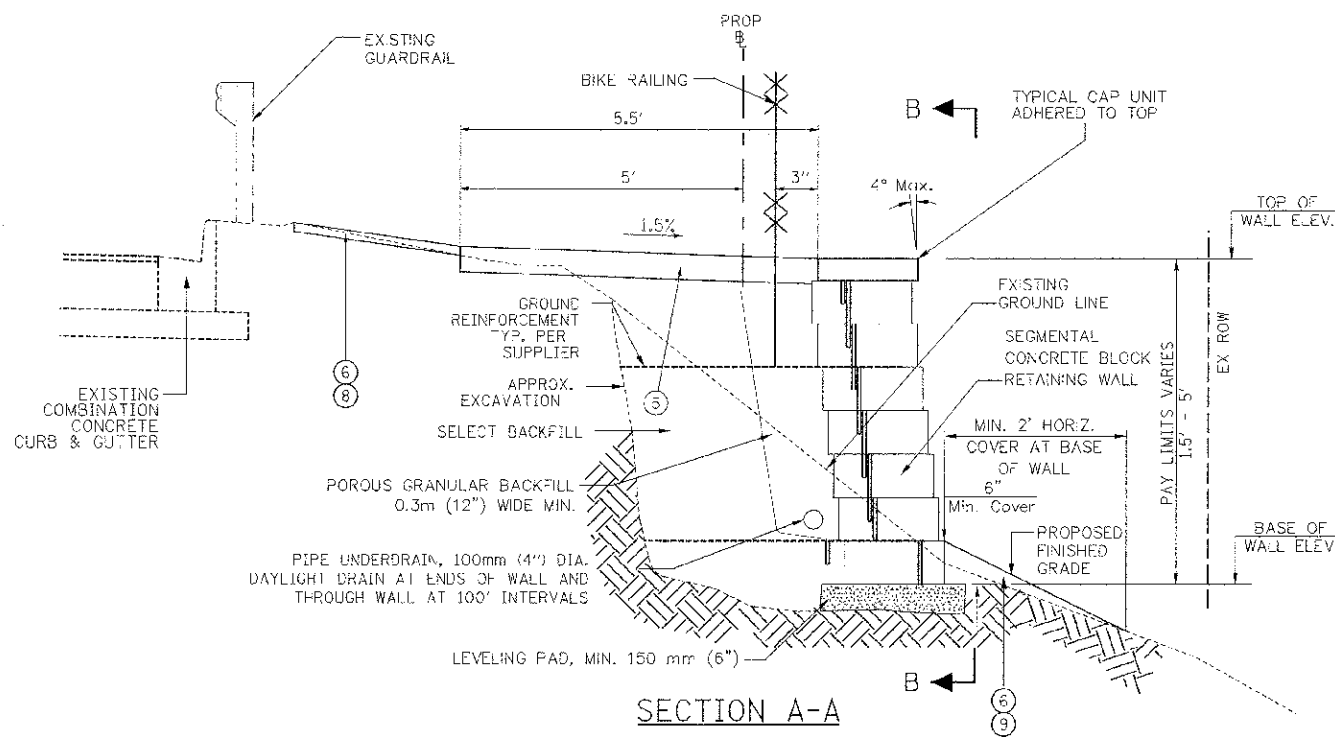
- ① HOT-MIX ASPHALT SURFACE COURSE, MIX "D", N70 (1 1/2")
- ② LEVELING BINDER (MACHINE METHOD), N70
- ③ BITUMINOUS MATERIALS (PRIME COAT)
- ④ COMBINATION CONCRETE CURB AND GUTTER, TYPE B-6.24
- ⑤ PORTLAND CEMENT CONCRETE SIDEWALK 5 INCH
- ⑥ TOPSOIL EXCAVATION AND PLACEMENT (4" OR AS NOTED)
- ⑦ SODDING, SALT TOLERANT
- ⑧ SEEDING, CLASS 2A
- ⑨ SEEDING, CLASS 7

HOT-MIX ASPHALT MIXTURE REQUIREMENTS

ITEM	AIR VOIDS & NDES
HOT-MIX ASPHALT SURFACE COURSE MIX "D", N70 (IL 9.5mm; 1 1/2")	4% @ 70 Gyr.
LEVELING BINDER (MACHINE METHOD) MIX "D", N70 (3/4" TO 1 1/2")	4% @ 70 Gyr.

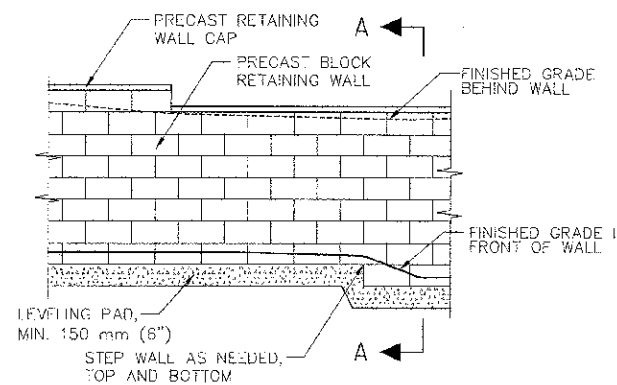
THE UNIT WEIGHT USED TO CALCULATE ALL HMA SURFACE MIXTURE QUANTITIES IS 112 LBS/SQ YD/IN

THE "AC TYPE" FOR POLYMERIZED HMA MIXES SHALL BE "SBS/SBR PG 76-22" FOR NON-POLYMERIZED HMA THE "AC TYPE" SHALL BE "PG 64-22" UNLESS MODIFIED BY DISTRICT ONE SPECIAL PROVISIONS.
 FOR "PERCENT OF RAP" SEE DISTRICT ONE SPECIAL PROVISIONS.



SECTION A-A
SEGMENTAL CONCRETE BLOCK
RETAINING WALL DETAIL
N.T.S.

STA. 23+85 TO STA. 27+20, SOUTHWEST HWY



SECTION B-B
ELEVATION
N.T.S.

SEGMENTAL CONCRETE BLOCK WALL NOTES

1. THE CONTRACTOR SHALL SUBMIT DESIGN, CONSTRUCTION PLANS WITH MATERIAL INFORMATION & SHOP DRAWINGS FOR CONNECTION DETAILS SIGNED BY A STRUCTURAL ENGINEER LICENSED IN THE STATE OF ILLINOIS TO THE ENGINEER FOR APPROVAL BEFORE ORDERING MATERIALS.
2. RETAINING WALL EQUIVALENT FLUID PRESSURE = 50(PCF)
3. REINFORCING BARS SHALL BE GRADE 60
4. GROUT MORTAR, f'm = 2500 psi (MIN.)
5. THE DESIGN OF THE RETAINING WALL SHALL BE IN COMPLIANCE WITH THE GUIDELINES FOR THE DESIGN OF MECHANICALLY STABILIZED EARTH WALLS AS DEVELOPED BY AASHTO-AGC-ARTA JOINT COMMITTEE TASK FORCE 27 GROUND MODIFICATION SYSTEMS.
6. EXCAVATION, LEVELING PAD, BACKFILL, PIPE UNDERDRAIN, GROUND RESTORATION, AND SEEDING OF RESTORED GROUND ARE INCLUDED IN COST OF CONCRETE BLOCK RETAINING WALL.
7. INSTALL BIKE RAILING POST SLEEVE DURING RETAINING WALL CONSTRUCTION TO PREVENT DAMAGE TO GROUND REINFORCEMENT.

SEGMENTAL CONCRETE BLOCK
RETAINING WALLS SITTING DATA

STATION	TOP OF WALL ELEV. FEET	BASE OF WALL ELEV. FEET	WALL HEIGHT FEET
23+89	604.36	600.40	3.96
24+00	604.08	600.40	3.68
24+75	604.08	600.61	3.47
25+00	604.81	601.52	3.29
26+00	605.54	603.51	2.03
27+27	608.08	607.05	1.03



100 S. WACKER DR.
SUITE 500
CHICAGO, IL 60606
TEL (312) 833-4100
FAX (312) 833-4198

DESIGNED: KLM
DRAWN: KLM
CHECKED: DDL
DATE: JUNE 29, 2012

REVISIONS:
REVISIONS:
REVISIONS:
REVISIONS:

STATE OF ILLINOIS
DEPARTMENT OF TRANSPORTATION

SOUTHWEST HIGHWAY SIDEWALK
TYPICAL SECTIONS

F.A.U. R.T.E. 3578 SECTION 11-03049-00-54 COUNTY COOK TOTAL SHEETS 29 NO. 4 CONTRACT NO. 63732