

**PROPOSED CURVE DATA**

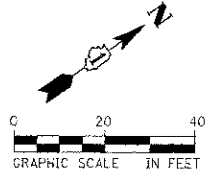
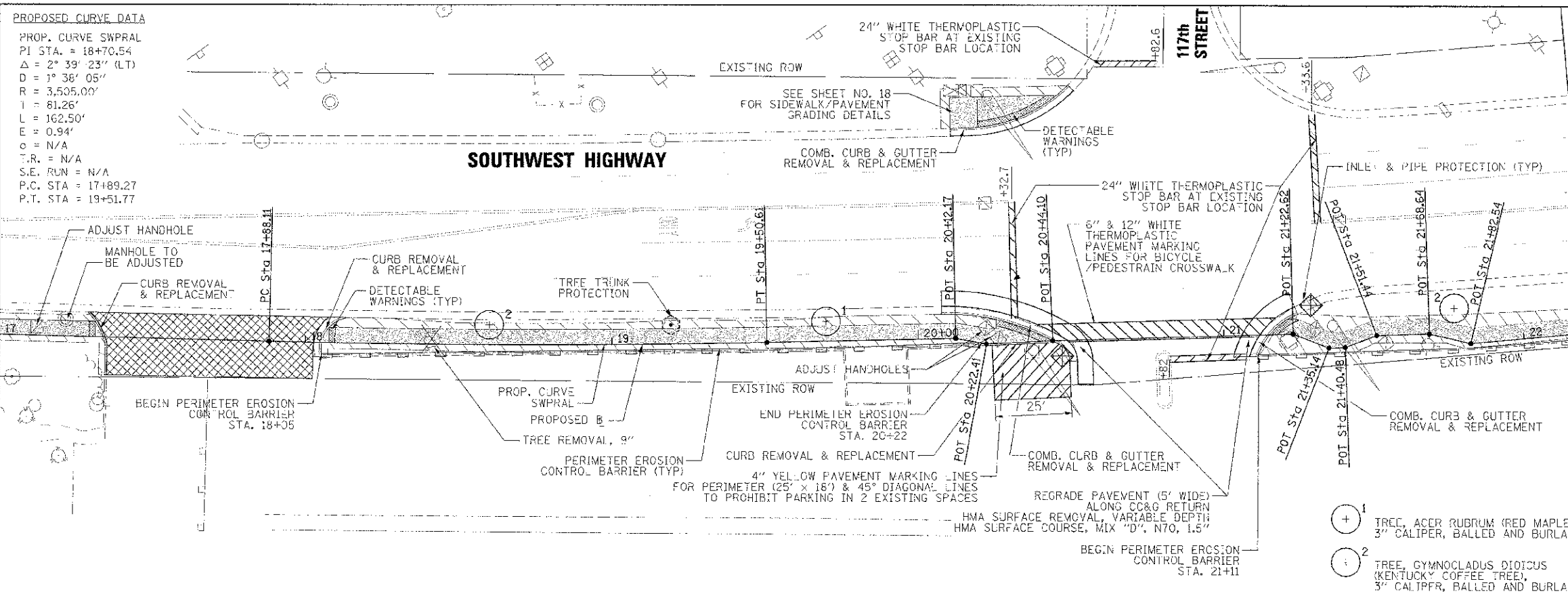
PROP. CURVE SWPRAL  
 PI STA. = 18+70.54  
 $\Delta = 2^\circ 39' 23''$  (LT)  
 $D = 1^\circ 36' 05''$   
 $R = 3,505.00'$   
 $L = 162.50'$   
 $E = 0.94'$   
 $c = N/A$   
 $T.R. = N/A$   
 $S.E. RUN = N/A$   
 P.C. STA = 17+89.27  
 P.T. STA = 19+51.77

**LEGEND**

- SODDING, SALT TOLERANT
- SEEDING, CLASS 2A
- SEEDING, CLASS 7
- PROPOSED PCC SIDEWALK, 5 INCH
- REGRADE ENTRANCE: HMA SURFACE REMOVAL, 1" LEVELING BINDER (MACHINE METHOD), N70
- HMA ASPHALT SURFACE COURSE, MIX "D", N70

MATCH LINE STA. 17+00

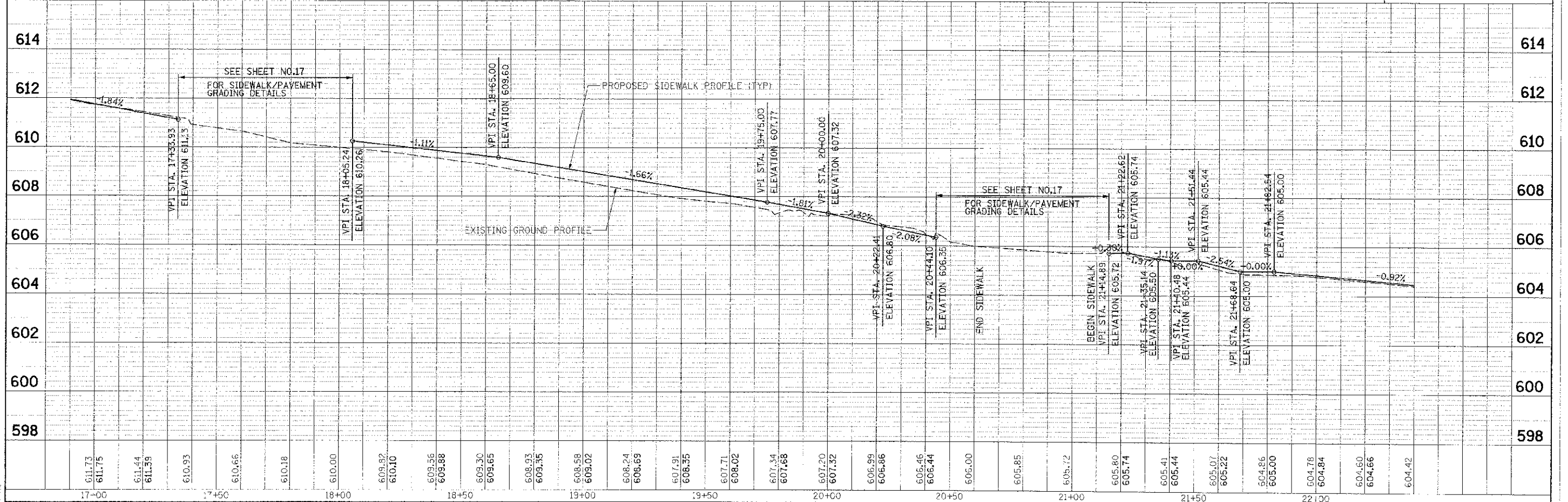
MATCH LINE STA. 22+25



- 1 TREE, ACER RUBRUM (RED MAPLE), 3" CALIPER, BALLED AND BURLAPPED
- 2 TREE, GYMNOCLADUS DIOICUS (KENTUCKY COFFEE TREE), 3" CALIPER, BALLED AND BURLAPPED

DATE	
BY	
CHECKED	
IN CHARGE	
PROJECT NO.	
SHEET NO.	
TITLE	

DATE	
BY	
CHECKED	
IN CHARGE	
PROJECT NO.	
SHEET NO.	
TITLE	



<b>URS</b>	DESIGNED	<i>KLM</i>	REVISED	
	DRAWN	<i>KLM</i>	REVISED	
	CHECKED	<i>DDI</i>	REVISED	
	DATE	<i>JUNE 29, 2012</i>	REVISED	

**STATE OF ILLINOIS  
 DEPARTMENT OF TRANSPORTATION**

**SOUTHWEST HIGHWAY SIDEWALK  
 PLAN & PROFILE - 3**

SCALE: H=20' V=2' SHEET NO. 3 OF 4 SHEETS STA. 17+00 TO STA. 22+25

PLAN NO.	SECTION	COUNTY	TOTAL SHEETS
3373	11-00049-00-5W	COOK	29
			7
			CONTRACT NO. 63732