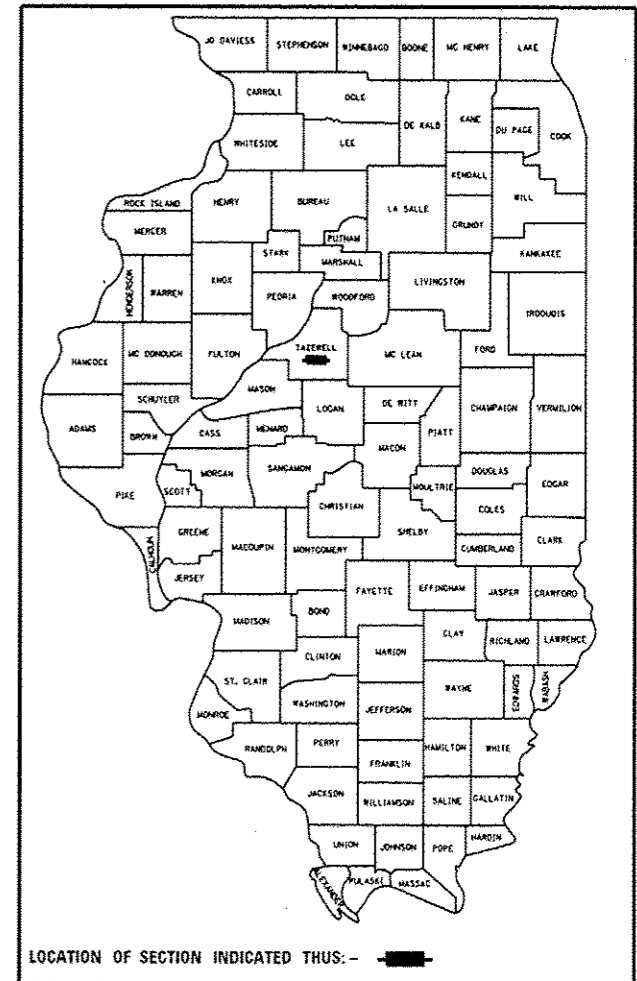


F.A.J. RTE.	SECTION	COUNTY	TOTAL SHEETS	SHEET NO.
74 & 155	90-[14R;(14HB-4,14,14HVB)BR]	TAZEWELL	2433	1
		ILLINOIS	CONTRACT NO. 68620	

*2433+107-73=2467
D-94-088-06



STATE OF ILLINOIS
DEPARTMENT OF TRANSPORTATION
DIVISION OF HIGHWAYS

**PROPOSED
HIGHWAY PLANS**

FAI 74 / FAI 155 INTERCHANGE (I-74/I-55)
SECTION 90-[14R;(14HB-4,14,14HVB)BR]
TAZEWELL COUNTY

PROJECT ACIM-ACBRI-000S(907)
INTERCHANGE RECONSTRUCTION
PLEASANT HILL RD TO MORTON INTERCHANGE TO
NORTH OF BIRCHWOOD RD
C-94-154-06

FOR INDEX OF SHEETS, SEE SHEET NO. 2
FOR LIST OF STANDARDS, SEE SHEET NOS. 3 & 4

PROJECT LOCATED NEAR THE
VILLAGE OF MORTON

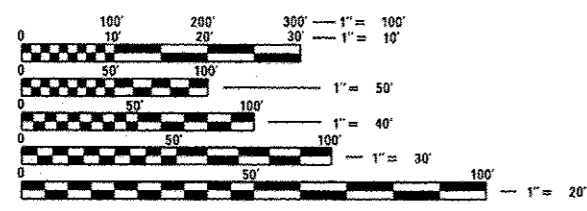
DESIGN DESIGNATION
FAI 74 (FREEWAY) WITH FAI 155 (FREEWAY)

TRAFFIC DATA

2011 ADT	2034 ADT
I-74 = 56,200 (W) VEH / 42,100 (E) VEH	I-74 = 85,500 VEH
I-155 = 22,000 VEH	I-155 = 34,800 VEH
RAMPS = 8,900 VEH	RAMPS = 15,100 VEH

DESIGN SPEED
I-74 AND I-155 70 MPH

POSTED SPEED LIMIT
I-74 AND I-155 65 MPH

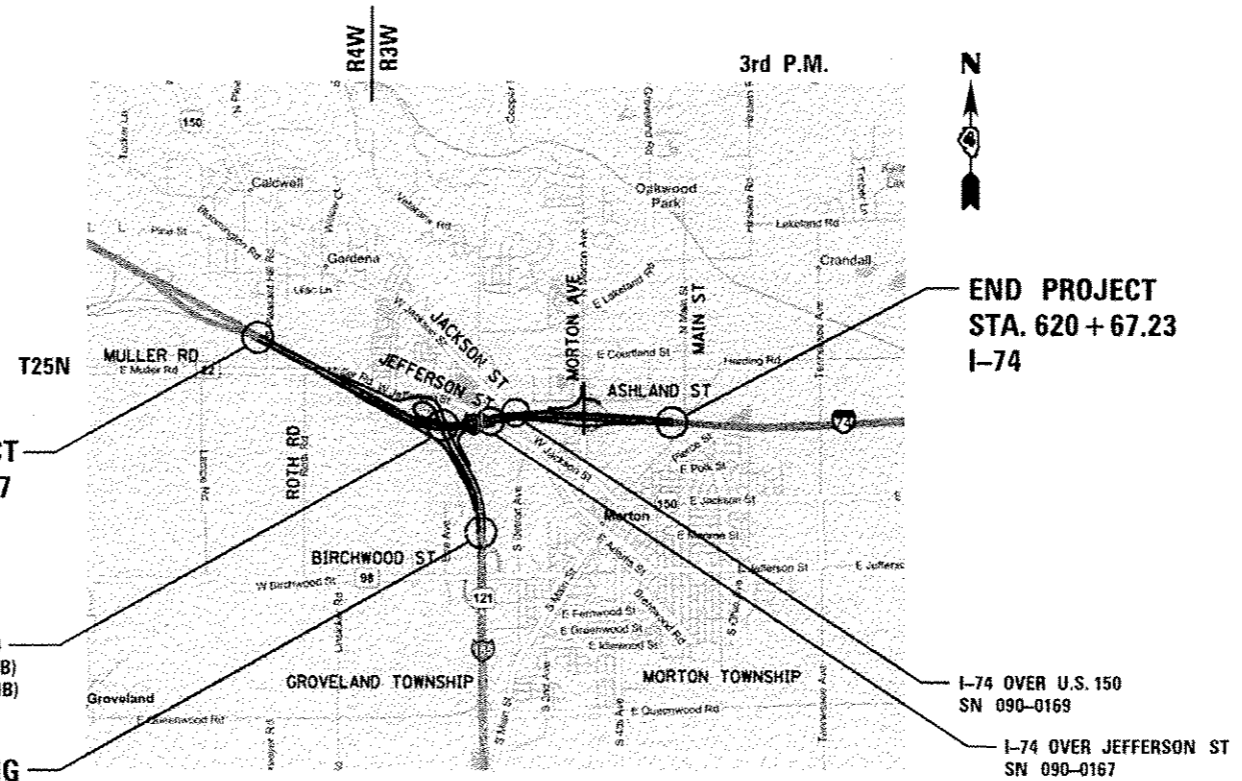


FULL SIZE PLANS HAVE BEEN PREPARED USING STANDARD
ENGINEERING SCALES. REDUCED SIZED PLANS WILL NOT
CONFORM TO STANDARD SCALES. IN MAKING MEASUREMENTS
ON REDUCED PLANS, THE ABOVE SCALES MAY BE USED.

J.U.L.I.E.
JOINT UTILITY LOCATION INFORMATION FOR EXCAVATION
1-800-892-0123
OR 811

PROJECT MANAGER: CHRISTOPHER MAUSHARD (309) 671-3453
PROJECT LIAISON ENGINEER: MIKE MOHAMED (309) 671-3462

CONTRACT NO. 68620
CATALOG NO. 033344-01D



TOWNSHIPS OF MORTON AND GROVELAND
LOCATION MAP
NOT TO SCALE

GROSS LENGTH = 15,513.00 FT. = 2.94 MILE
NET LENGTH = 15,513.00 FT. = 2.94 MILE

STATE OF ILLINOIS
DEPARTMENT OF TRANSPORTATION
DIVISION OF HIGHWAYS

SUBMITTED July 27 2012
[Signature]
DEPUTY DIRECTOR OF HIGHWAYS, REGION ENGINEER

August 17 2012
[Signature]
ENGINEER OF DESIGN AND ENVIRONMENT

August 17 2012
[Signature]
DIRECTOR OF HIGHWAYS, CHIEF ENGINEER

PRINTED BY THE AUTHORITY
OF THE STATE OF ILLINOIS