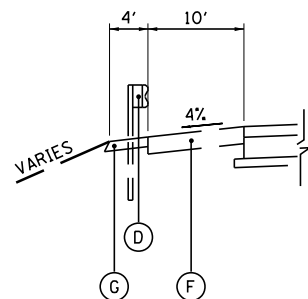


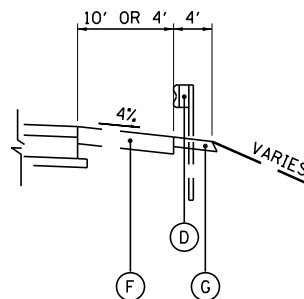
EXISTING TYPICAL SECTION A
I-74

STA 464+54.83 TO STA 517+15.00 (WB)
STA 473+00.00 TO STA 515+20.00 (EB)



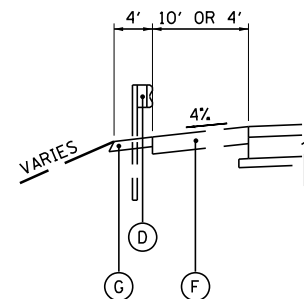
STA 465+59 TO STA 470+75
STA 482+30 TO STA 485+08
STA 489+56 TO STA 497+93
STA 508+53 TO STA 511+18
STA 536+30 TO STA 577+71

DETAIL A



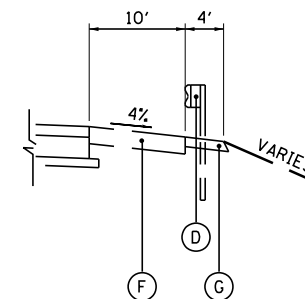
STA 494+78 TO STA 498+21
STA 507+92 TO STA 510+79
STA 515+85 TO STA 519+78
STA 538+91 TO STA 544+57
STA 549+06 TO STA 554+84
STA 566+67 TO STA 578+69

DETAIL B



STA 491+43 TO STA 495+06
STA 504+67 TO STA 508+02
STA 513+76 TO STA 516+26
STA 535+46 TO STA 541+17
STA 545+66 TO STA 551+45
STA 563+26 TO STA 570+43
STA 572+64 TO STA 575+52

DETAIL C

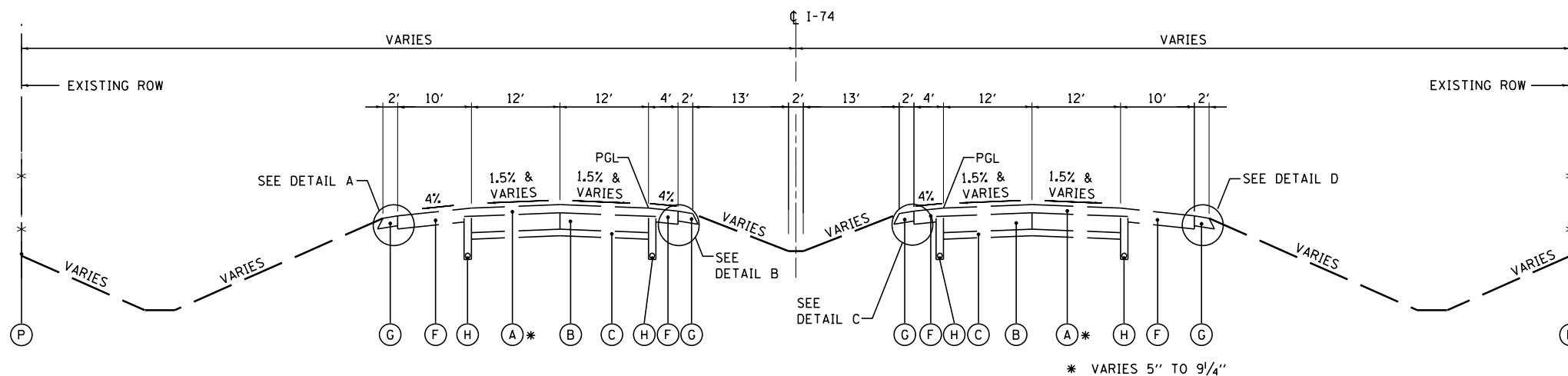


STA 479+93 TO STA 487+56
STA 513+43 TO STA 516+22
STA 533+20 TO STA 545+79
STA 551+84 TO STA 571+29

DETAIL D

EXISTING LEGEND:

- (A) EXISTING H.M.A. OVERLAY - VARIES
- (B) EXISTING P.C.C. PAVEMENT 9 1/4" TO 10 1/4"
- (C) EXISTING SUB-BASE GRANULAR MATERIAL 3" TO 6"
- (D) EXISTING GUARDRAIL
- (E) EXISTING P.C.C. SHOULDER 9 1/4" TO 10 1/4"
- (F) EXISTING H.M.A. SHOULDER 8" TO 10"
- (G) EXISTING AGGREGATE SHOULDER TYPE B 6"
- (H) EXISTING PIPE UNDERDRAIN 4"
- (I) EXISTING STABILIZED SUB-BASE, 4"
- (J) EXISTING SUB-BASE GRANULAR MATERIAL, TYPE A, 12"
- (K) EXISTING SUB-BASE GRANULAR MATERIAL, TYPE C
- (L) EXISTING SUB-BASE GRANULAR MATERIAL, TYPE A, 6"
- (M) EXISTING H.M.A. OVERLAY 2 1/2"
- (N) EXISTING H.M.A. OVERLAY 5 1/2"
- (O) EXISTING H.M.A. OVERLAY 5"
- (P) EXISTING CHAIN LINK FENCE



EXISTING TYPICAL SECTION B
I-74

STA 517+15.00 TO STA 587+24.00 (WB)
STA 515+20.00 TO STA 609+62.79 (EB)
BRIDGE OMISSION STA 539+03.20 TO STA 541+05.11 (FAI 74 OVER FAI 155)
BRIDGE OMISSION STA 549+13.82 TO STA 551+35.86 (FAI 74 OVER PENNSYLVANIA RAILROAD)
BRIDGE OMISSION STA 566+73.68 TO STA 570+35.66 (FAI 74 OVER JACKSON STREET)

FILE NAME =	DESIGNED - EJA	REVISED -
...\\D468620-sh.t.Ex_Typ-I-74_01.dgn	DRAWN - TMB	REVISED -
USER NAME = tblank	CHECKED - JNR	REVISED -
PLOT DATE = 7/17/2012	DATE - JULY 20, 2012	REVISED -



STATE OF ILLINOIS
DEPARTMENT OF TRANSPORTATION

EXISTING TYPICAL SECTIONS
I-74

SCALE: NTS SHEET NO. 1 OF 1 SHEETS STA. TO STA.

F.A.I. RTE.	SECTION	COUNTY	TOTAL SHEETS	SHEET NO.
90-[14Rz(14HB-4,14,14HVB)BR]		TAZEWELL	2433	42
CONTRACT NO. 68620			ILLINOIS FED. AID PROJECT	