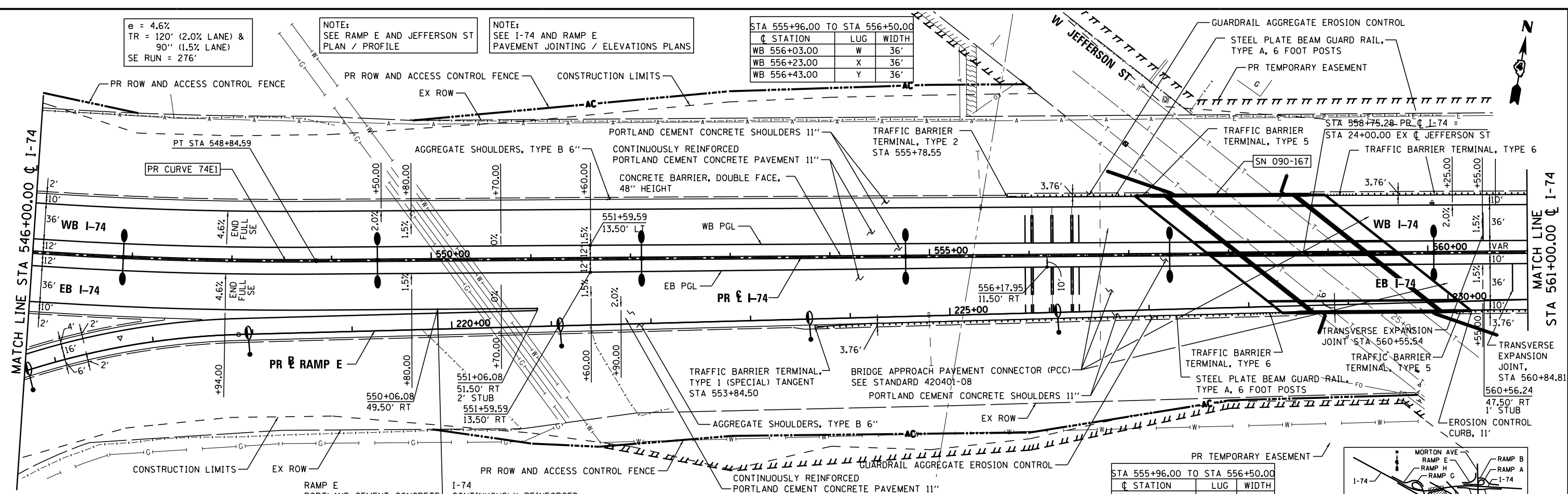


e = 4.6%  
 TR = 120' (2.0% LANE) &  
 90' (1.5% LANE)  
 SE RUN = 276'

NOTE:  
 SEE RAMP E AND JEFFERSON ST  
 PLAN / PROFILE

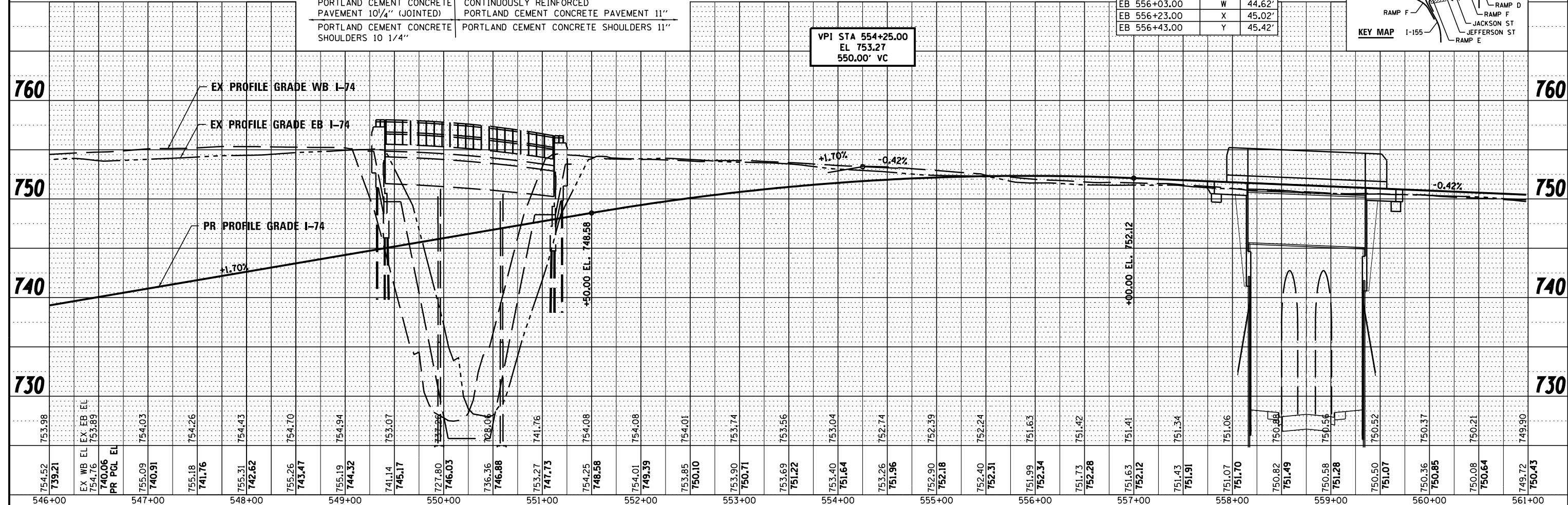
NOTE:  
 SEE I-74 AND RAMP E  
 PAVEMENT JOINTING / ELEVATIONS PLANS

STA 555+96.00 TO STA 556+50.00		
STATION	LUG	WIDTH
WB 556+03.00	W	36'
WB 556+23.00	X	36'
WB 556+43.00	Y	36'

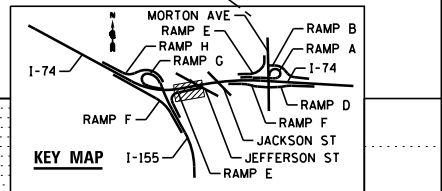


PLAN	SURVEYED	DATE
	PLOTTED	BY
	GRADES CHECKED	
	STRUCTURE NOTATIONS CHECKED	
	NOTE BOOK NO.	
	FILE NAME	

PROFILE	SURVEYED	DATE
	PLOTTED	BY
	GRADES CHECKED	
	STRUCTURE NOTATIONS CHECKED	
	NOTE BOOK NO.	
	FILE NAME	



STA 555+96.00 TO STA 556+50.00		
STATION	LUG	WIDTH
EB 556+03.00	W	44.62'
EB 556+23.00	X	45.02'
EB 556+43.00	Y	45.42'



FILE NAME -	DESIGNED - EJA	REVISED -
...D468620-sht-1-74-plnpr-f07.dgn	DRAWN - TMB	REVISED -
USER NAME = mbecker	CHECKED - JNR	REVISED -
PLOT DATE = 7/27/2012	DATE - JULY 20, 2012	REVISED -



STATE OF ILLINOIS  
 DEPARTMENT OF TRANSPORTATION

PLAN AND PROFILE		SECTION		COUNTY		TOTAL SHEETS	
I-74		90-[14R(14H)-4,14,14HVB]BRJ		TAZEWELL		2433	
SCALE: 1"=50'		SHEET NO. 7 OF 11 SHEETS		STA. 546+00.00 TO STA. 561+00.00		CONTRACT NO. 68620	

F.A.I. R.T.E.	SECTION	COUNTY	TOTAL SHEETS	SHEET NO.
	90-[14R(14H)-4,14,14HVB]BRJ	TAZEWELL	2433	214
ILLINOIS FED. AID PROJECT				