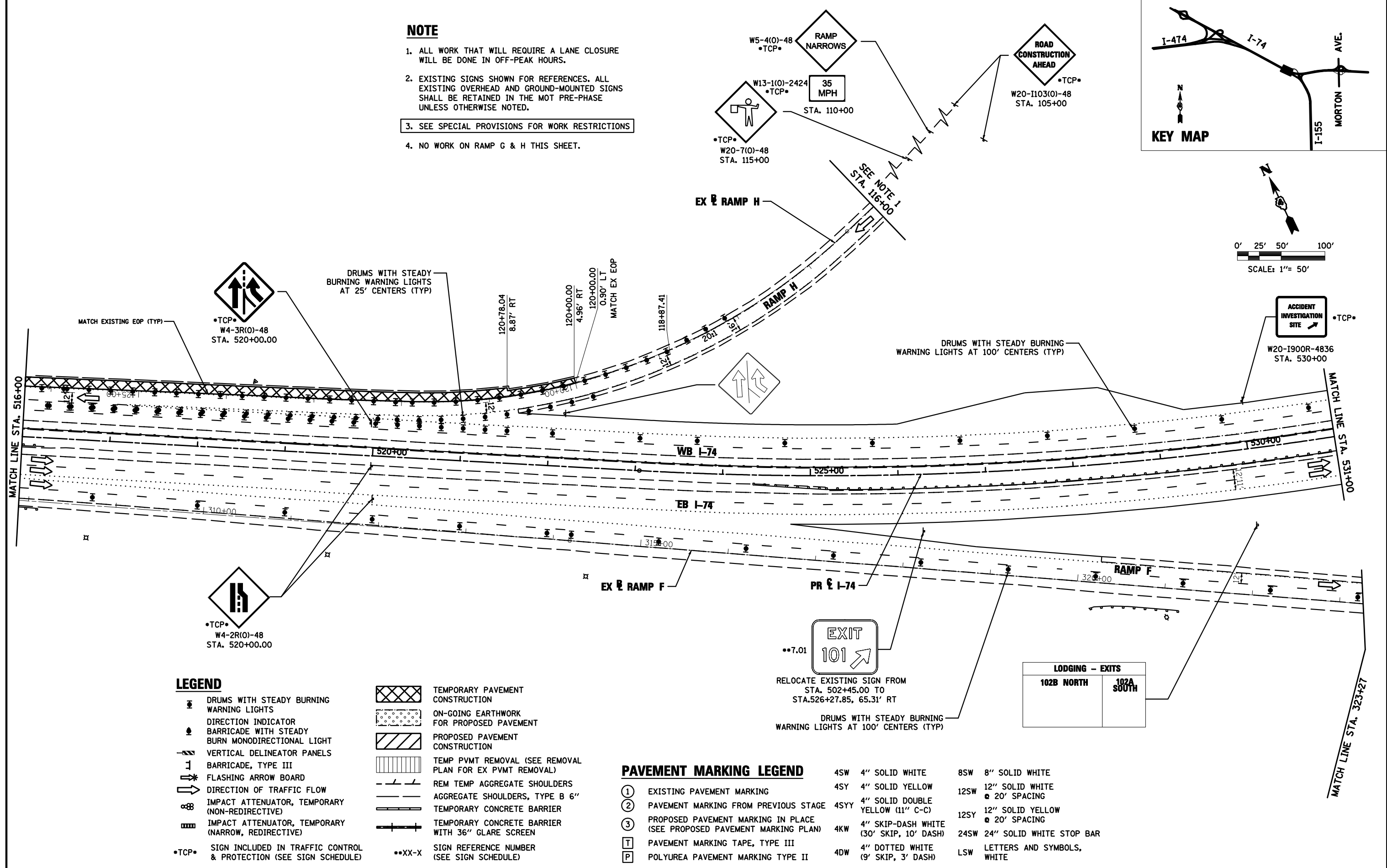
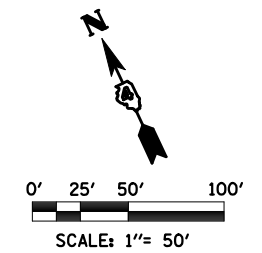
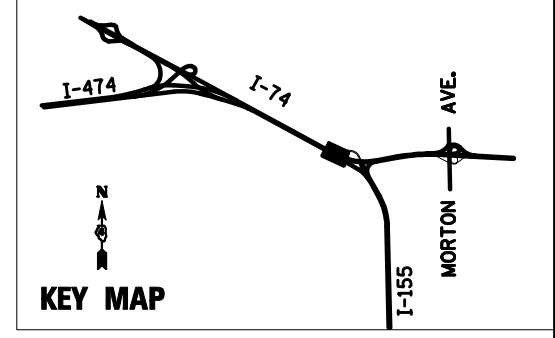


NOTE

1. ALL WORK THAT WILL REQUIRE A LANE CLOSURE WILL BE DONE IN OFF-PEAK HOURS.
2. EXISTING SIGNS SHOWN FOR REFERENCES. ALL EXISTING OVERHEAD AND GROUND-MOUNTED SIGNS SHALL BE RETAINED IN THE MOT PRE-PHASE UNLESS OTHERWISE NOTED.
3. SEE SPECIAL PROVISIONS FOR WORK RESTRICTIONS
4. NO WORK ON RAMP G & H THIS SHEET.



LEGEND

- DRUMS WITH STEADY BURNING WARNING LIGHTS
- DIRECTION INDICATOR
- BARRICADE WITH STEADY BURN MONODIRECTIONAL LIGHT
- VERTICAL DELINEATOR PANELS
- BARRICADE, TYPE III
- FLASHING ARROW BOARD
- IMPACT ATTENUATOR, TEMPORARY (NON-REDIRECTIVE)
- IMPACT ATTENUATOR, TEMPORARY (NARROW, REDIRECTIVE)
- *TCP*** SIGN INCLUDED IN TRAFFIC CONTROL & PROTECTION (SEE SIGN SCHEDULE)
- TEMPORARY PAVEMENT CONSTRUCTION
- ON-GOING EARTHWORK FOR PROPOSED PAVEMENT
- PROPOSED PAVEMENT CONSTRUCTION
- TEMP PVMT REMOVAL (SEE REMOVAL PLAN FOR EX PVMT REMOVAL)
- REM TEMP AGGREGATE SHOULDERS
- AGGREGATE SHOULDERS, TYPE B 6"
- TEMPORARY CONCRETE BARRIER
- TEMPORARY CONCRETE BARRIER WITH 36" GLARE SCREEN
- **XX-X** SIGN REFERENCE NUMBER (SEE SIGN SCHEDULE)

PAVEMENT MARKING LEGEND

- ① EXISTING PAVEMENT MARKING
- ② PAVEMENT MARKING FROM PREVIOUS STAGE (SEE PROPOSED PAVEMENT MARKING PLAN)
- ③ PROPOSED PAVEMENT MARKING IN PLACE (SEE PROPOSED PAVEMENT MARKING PLAN)
- T PAVEMENT MARKING TAPE, TYPE III
- P POLYUREA PAVEMENT MARKING TYPE II
- 4SW 4" SOLID WHITE
- 4SY 4" SOLID YELLOW
- 4SYY 4" SOLID DOUBLE YELLOW (11" C-C)
- 4KW 4" SKIP-DASH WHITE (30' SKIP, 10' DASH)
- 4DW 4" DOTTED WHITE (9' SKIP, 3' DASH)
- 8SW 8" SOLID WHITE
- 12SW 12" SOLID WHITE @ 20' SPACING
- 12SY 12" SOLID YELLOW @ 20' SPACING
- 24SW 24" SOLID WHITE STOP BAR
- LSW LETTERS AND SYMBOLS, WHITE

FILE NAME =	DESIGNED - HTL	REVISED -
D468620-shr-staging07 174-B-00.dgn	DRAWN - HTL	REVISED -
USER NAME = TERRA	CHECKED - DA/LVA	REVISED -
PLOT DATE = 7/17/2012	DATE - 7/20/2012	REVISED -



STATE OF ILLINOIS
DEPARTMENT OF TRANSPORTATION

MAINTENANCE OF TRAFFIC
PRE STAGE - SUB STAGE B

SCALE: SHEET NO. 23 OF 50 SHEETS STA. 516+00 TO STA. 531+00

F.A.I. RTE.	SECTION	COUNTY	TOTAL SHEETS	SHEET NO.
90-[14R(14HB-4,14,14HVB)BR]	TAZEWELL	ILLINOIS	2433	296
CONTRACT NO. 68620			ILLINOIS FED. AID PROJECT	