

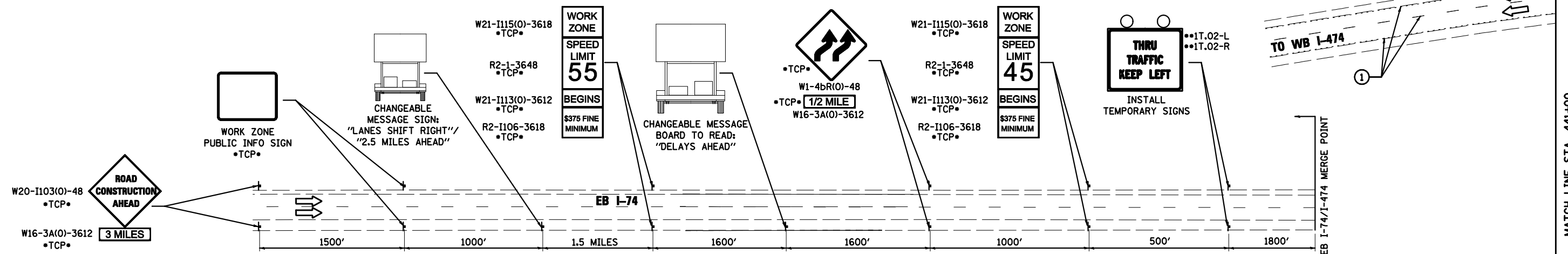
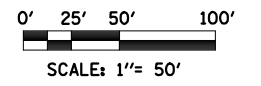
LEGEND

- DRUMS WITH STEADY BURNING WARNING LIGHTS
- DIRECTION INDICATOR BARRICADE WITH STEADY BURN MONODIRECTIONAL LIGHT
- VERTICAL DELINEATOR PANELS BARRICADE, TYPE III
- FLASHING ARROW BOARD
- DIRECTION OF TRAFFIC FLOW
- IMPACT ATTENUATOR, TEMPORARY (NON-REDIRECTIVE)
- IMPACT ATTENUATOR, TEMPORARY (NARROW, REDIRECTIVE)
- TCP• SIGN INCLUDED IN TRAFFIC CONTROL & PROTECTION (SEE SIGN SCHEDULE)

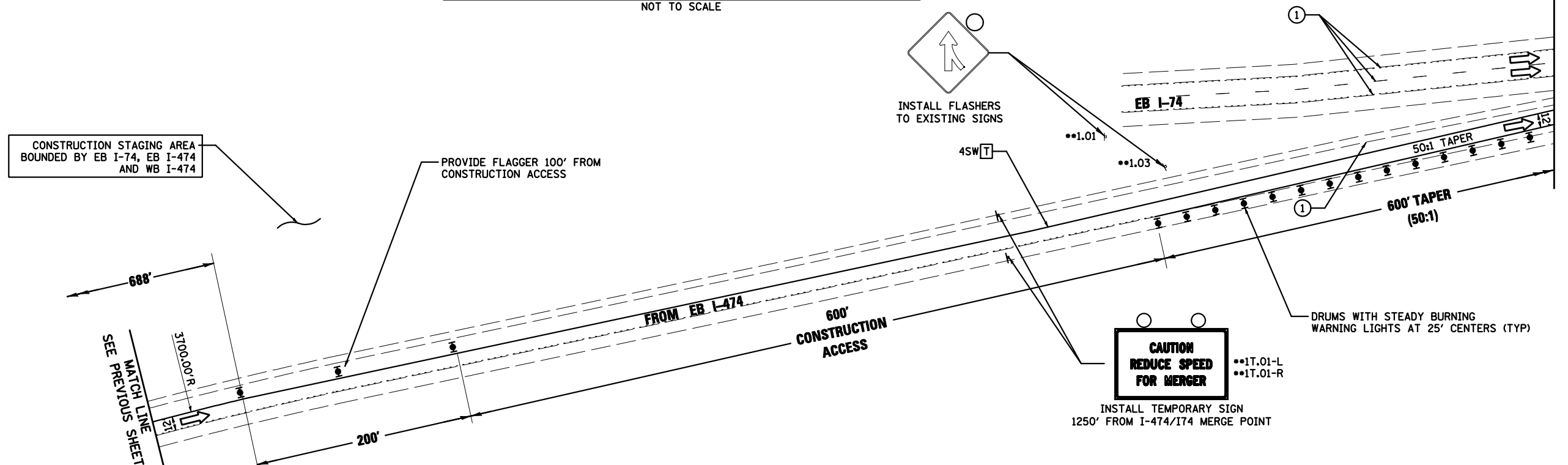
- TEMPORARY PAVEMENT CONSTRUCTION
- ON-GOING EARTHWORK FOR PROPOSED PAVEMENT
- PROPOSED PAVEMENT CONSTRUCTION
- TEMP PVMT REMOVAL (SEE REMOVAL PLAN FOR EX PVMT REMOVAL)
- REM TEMP AGGREGATE SHOULDERS
- AGGREGATE SHOULDERS, TYPE B 6"
- TEMPORARY CONCRETE BARRIER
- TEMPORARY CONCRETE BARRIER WITH 36" GLARE SCREEN
- XX-X SIGN REFERENCE NUMBER (SEE SIGN SCHEDULE)

PAVEMENT MARKING LEGEND

- ① EXISTING PAVEMENT MARKING
 - ② TEMPORARY PAVEMENT MARKING FROM PREVIOUS STAGE
 - ③ PROPOSED PAVEMENT MARKING IN PLACE (SEE PROPOSED PAVEMENT MARKING PLAN)
 - T PAVEMENT MARKING TAPE, TYPE III
 - P POLYUREA PAVEMENT MARKING TYPE II
- | | | | |
|------|---|------|--------------------------------|
| 4SW | 4" SOLID WHITE | 8SW | 8" SOLID WHITE |
| 4SY | 4" SOLID YELLOW | 12SW | 12" SOLID WHITE @ 20' SPACING |
| 4SYY | 4" SOLID DOUBLE YELLOW (11" C-C) | 12SY | 12" SOLID YELLOW @ 20' SPACING |
| 4KW | 4" SKIP-DASH WHITE (30' SKIP, 10' DASH) | 24SW | 24" SOLID WHITE STOP BAR |
| 4DW | 4" DOTTED WHITE (9' SKIP, 3' DASH) | LSW | LETTERS & SYMBOLS, WHITE |



EASTBOUND APPROACH I-74 ADVANCED SIGNING DETAIL
NOT TO SCALE



FILE NAME = D468620-shd-staging01 174-01.dgn	DESIGNED - HTL	REVISED -		STATE OF ILLINOIS DEPARTMENT OF TRANSPORTATION	MAINTENANCE OF TRAFFIC STAGE 1	F.A.I. RTE. = 90-[14R(14HB-4,14,14HVB)BR]	SECTION =	COUNTY = TAZEWELL	TOTAL SHEETS = 2433	SHEET NO. = 336		
USER NAME = TERRA	DRAWN - JPS	REVISED -				SCALE: -	SHEET NO. 13 OF 52 SHEETS	STA. -	TO STA. -	CONTRACT NO. 68620		
PLOT DATE = 7/16/2012	CHECKED - DA/LVA	REVISED -				ILLINOIS FED. AID PROJECT						
DATE = 7/20/2012	REVISIONS	REVISED -				• 74 & 155						