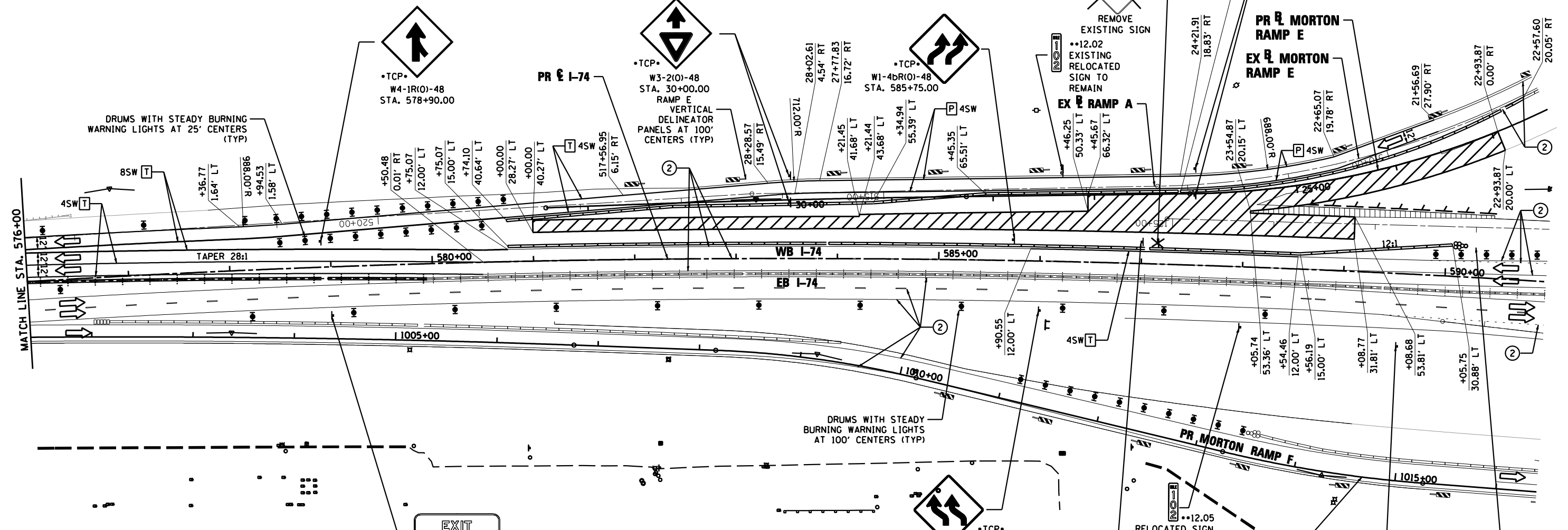
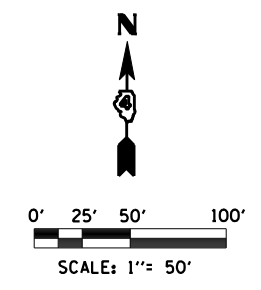
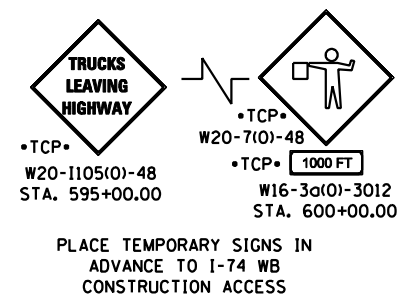


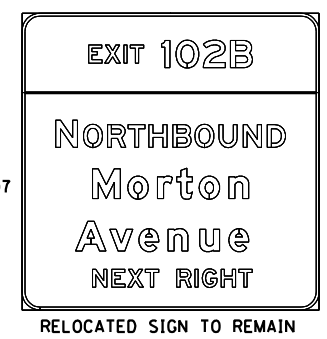
- LEGEND**
- DRUMS WITH STEADY BURNING WARNING LIGHTS
  - DIRECTION INDICATOR BARRICADE WITH STEADY BURN MONODIRECTIONAL LIGHT
  - VERTICAL DELINEATOR PANELS
  - BARRICADE, TYPE III
  - FLASHING ARROW BOARD
  - DIRECTION OF TRAFFIC FLOW
  - IMPACT ATTENUATOR, TEMPORARY (NON-REDIRECTIVE)
  - IMPACT ATTENUATOR, TEMPORARY (NARROW, REDIRECTIVE)
  - TCP• SIGN INCLUDED IN TRAFFIC CONTROL & PROTECTION (SEE SIGN SCHEDULE)

- ON-GOING EARTHWORK FOR PROPOSED PAVEMENT
- PROPOSED PAVEMENT CONSTRUCTION
- TEMP PVMT REMOVAL (SEE REMOVAL PLAN FOR EX PVMT REMOVAL)
- REM TEMP AGGREGATE SHOULDERS
- AGGREGATE SHOULDERS, TYPE B 6"
- TEMPORARY CONCRETE BARRIER
- TEMPORARY CONCRETE BARRIER WITH 36" GLARE SCREEN
- XX-X SIGN REFERENCE NUMBER (SEE SIGN SCHEDULE)



**PAVEMENT MARKING LEGEND**

- ① EXISTING PAVEMENT MARKING
  - ② TEMPORARY PAVEMENT MARKING FROM PREVIOUS STAGE
  - ③ PROPOSED PAVEMENT MARKING IN PLACE (SEE PROPOSED PAVEMENT MARKING PLAN)
  - T PAVEMENT MARKING TAPE, TYPE III
  - P POLYUREA PAVEMENT MARKING TYPE II
- |   |                                     |
|---|-------------------------------------|
| 4SW 4" SOLID WHITE                          | 8SW 8" SOLID WHITE                  |
| 4SY 4" SOLID YELLOW                         | 12SW 12" SOLID WHITE @ 20' SPACING  |
| 4SY 4" SOLID DOUBLE YELLOW (11" C-C)        | 12SY 12" SOLID YELLOW @ 20' SPACING |
| 4KW 4" SKIP-DASH WHITE (30' SKIP, 10' DASH) | 24SW 24" SOLID WHITE STOP BAR       |
| 4DW 4" DOTTED WHITE (9' SKIP, 3' DASH)      | LSW LETTERS & SYMBOLS, WHITE        |



FILE NAME = D468620-sh1-staging12 174-038.dgn	DESIGNED - HTL	REVISED -
USER NAME = TERRA	DRAWN - JPS	REVISED -
PLOT DATE = 7/16/2012	CHECKED - DA/LVA	REVISED -
	DATE - 7/20/2012	REVISED -



STATE OF ILLINOIS  
DEPARTMENT OF TRANSPORTATION

MAINTENANCE OF TRAFFIC  
STAGE 3B

SCALE: SHEET NO. 9 OF 12 SHEETS STA. 576+00 TO STA. 591+00

F.A.I. RTE. = 90-[14R(14HB-4,14HVB)BR]	SECTION = TAZEWELL	COUNTY =	TOTAL SHEETS = 2433	SHEET NO. = 728
CONTRACT NO. 68620			ILLINOIS FED. AID PROJECT	