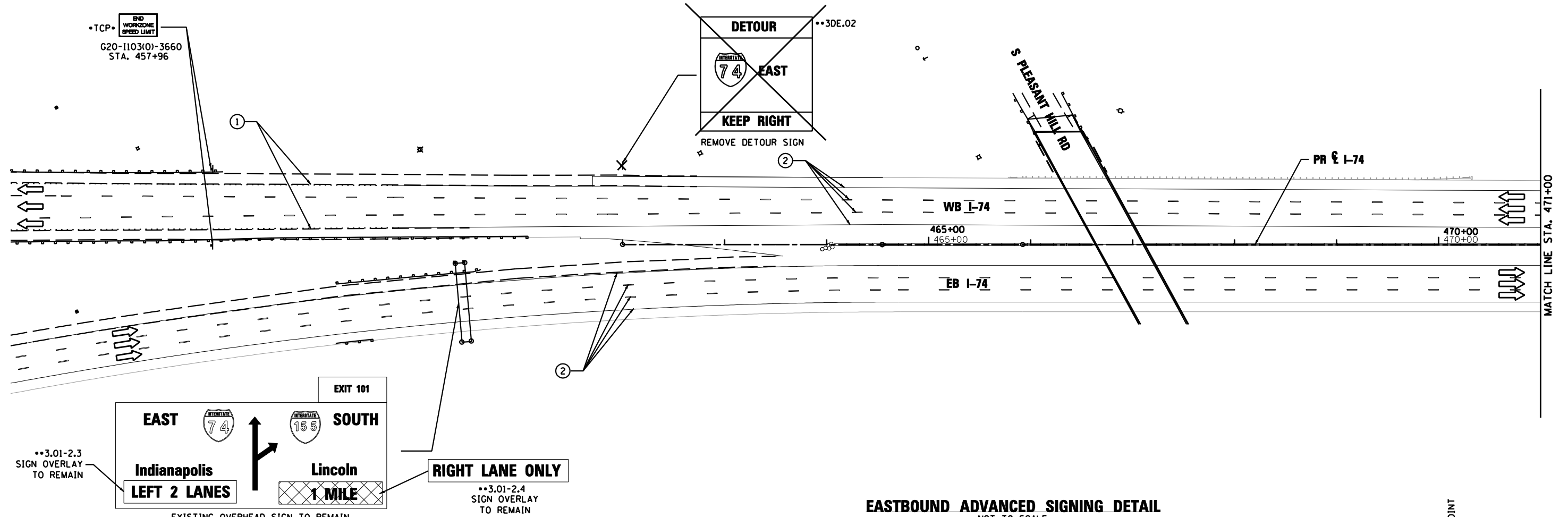
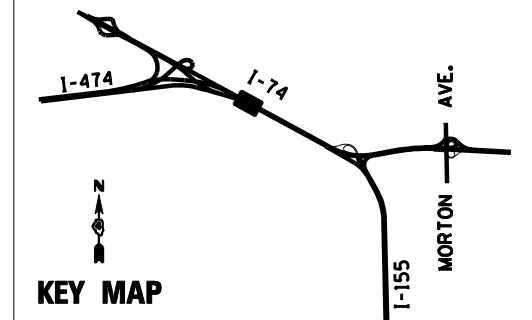
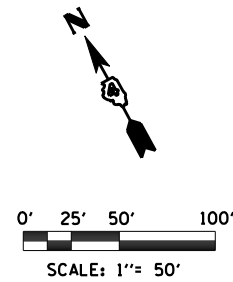


LEGEND

- DRUMS WITH STEADY BURNING WARNING LIGHTS
 - DIRECTION INDICATOR
 - BARRICADE WITH STEADY BURN MONODIRECTIONAL LIGHT
 - VERTICAL DELINEATOR PANELS
 - BARRICADE, TYPE III
 - ↔ FLASHING ARROW BOARD
 - DIRECTION OF TRAFFIC FLOW
 - IMPACT ATTENUATOR, TEMPORARY (NON-REDIRECTIVE)
 - IMPACT ATTENUATOR, TEMPORARY (NARROW, REDIRECTIVE)
 - TCP• SIGN INCLUDED IN TRAFFIC CONTROL & PROTECTION (SEE SIGN SCHEDULE)
- TEMPORARY PAVEMENT CONSTRUCTION
 - ON-GOING EARTHWORK FOR PROPOSED PAVEMENT
 - PROPOSED PAVEMENT CONSTRUCTION
 - TEMP PVMT REMOVAL (SEE REMOVAL PLAN FOR EX PVMT REMOVAL)
 - REM TEMP AGGREGATE SHOULDERS
 - AGGREGATE SHOULDERS, TYPE B 6"
 - TEMPORARY CONCRETE BARRIER
 - TEMPORARY CONCRETE BARRIER WITH 36" GLARE SCREEN
 - SIGN REFERENCE NUMBER (SEE SIGN SCHEDULE)

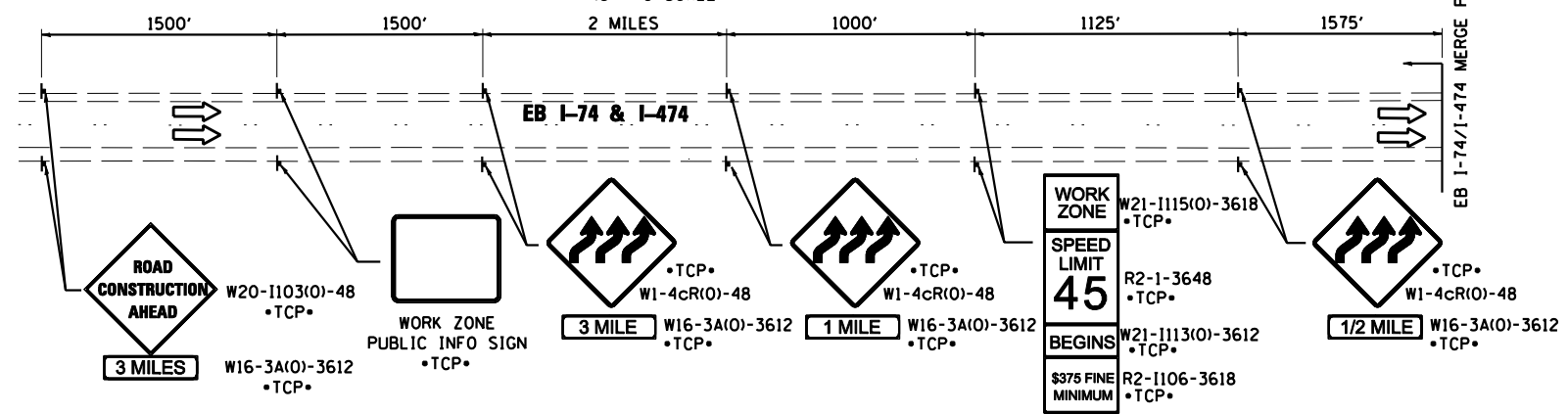
PAVEMENT MARKING LEGEND

- ① EXISTING PAVEMENT MARKING
 - ② TEMPORARY PAVEMENT MARKING FROM PREVIOUS STAGE
 - ③ PROPOSED PAVEMENT MARKING IN PLACE (SEE PROPOSED PAVEMENT MARKING PLAN)
 - T PAVEMENT MARKING TAPE, TYPE III
 - P POLYUREA PAVEMENT MARKING TYPE II
- | | |
|---|-------------------------------------|
| 4SW 4" SOLID WHITE | 8SW 8" SOLID WHITE |
| 4SY 4" SOLID YELLOW | 12SW 12" SOLID WHITE @ 20' SPACING |
| 4SYY 4" SOLID DOUBLE YELLOW (11" C-C) | 12SY 12" SOLID YELLOW @ 20' SPACING |
| 4KW 4" SKIP-DASH WHITE (30' SKIP, 10' DASH) | 24SW 24" SOLID WHITE STOP BAR |
| 4DW 4" DOTTED WHITE (9' SKIP, 3' DASH) | LSW LETTERS & SYMBOLS, WHITE |



REMOVE ALL DETOUR SIGNS AND SIGNS IN CONFLICT WITH THE ADVANCED SIGNING DETAIL WEST OF STA. 486+00.00. ALL PAVEMENT MARKING AND OTHER SIGNING TO REMAIN UNCHANGED. (SEE PREVIOUS STAGE)

EASTBOUND ADVANCED SIGNING DETAIL
NOT TO SCALE



FILE NAME =	DESIGNED - HTL	REVISED -
D468620-sh-t-staging03 174-04WS1.dgn	DRAWN - JPS	REVISED -
USER NAME = TERRA	CHECKED - DA/LVA	REVISED -
PLOT DATE = 7/16/2012	DATE - 7/20/2012	REVISED -



STATE OF ILLINOIS
DEPARTMENT OF TRANSPORTATION

MAINTENANCE OF TRAFFIC
2013 WINTER SHUTDOWN

SCALE: SHEET NO. 3 OF 19 SHEETS STA. 456+00 TO STA. 471+00

F.A.I. RTE.	SECTION	COUNTY	TOTAL SHEETS	SHEET NO.
90-[14R(14HB-4,14,14HB)BR]		TAZEWELL	2433	796
CONTRACT NO. 68620			ILLINOIS FED. AID PROJECT	