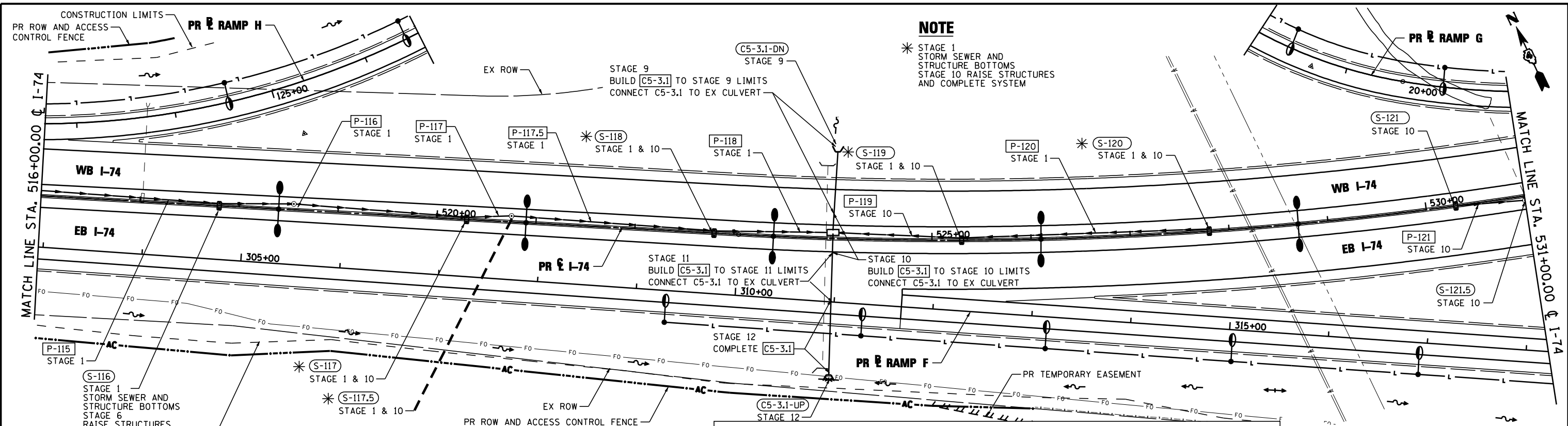


PLAN	SURVEYED	CHECKED
NOTE BOOK	PLOTTED	ALIGNED
NO.	NO.	NO.
BY	DATE	

PROFILE	SURVEYED	CHECKED
NOTE BOOK	PLOTTED	ALIGNED
NO.	NO.	NO.
BY	DATE	

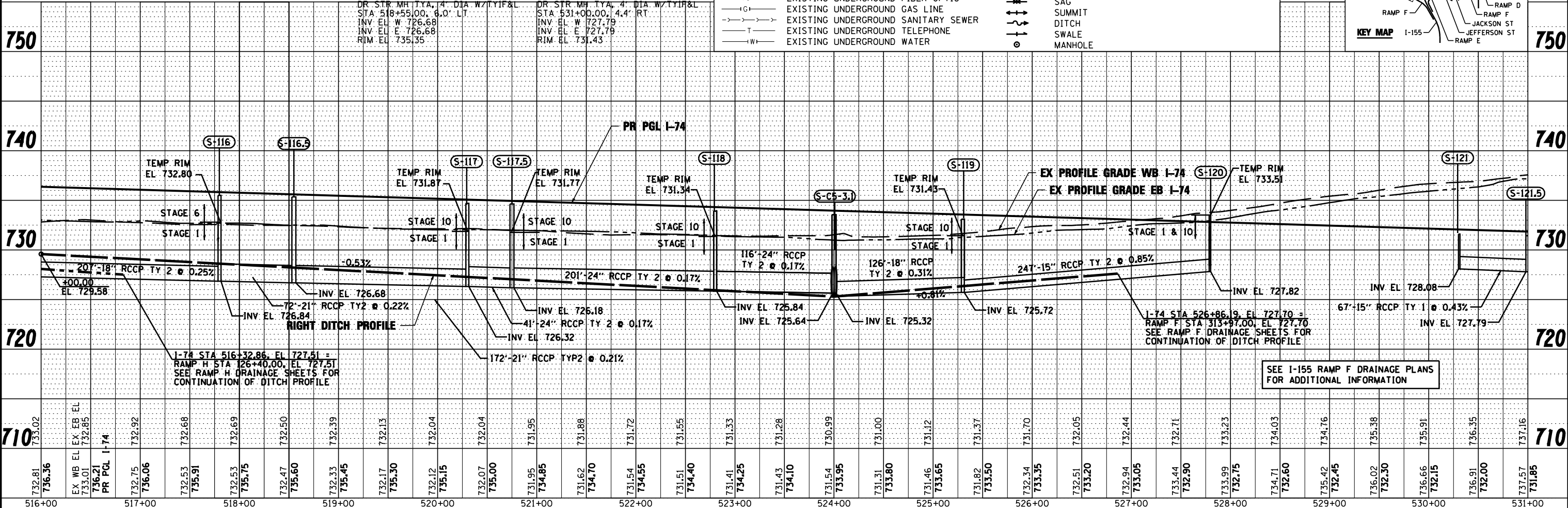
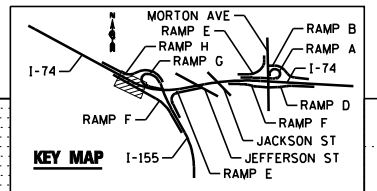


NOTE
 * STAGE 1 STORM SEWER AND STRUCTURE BOTTOMS
 STAGE 10 RAISE STRUCTURES AND COMPLETE SYSTEM

NOTE
 REFER TO TEMPORARY STORM SEWER PLAN FOR ADDITIONAL INFORMATION.

LEGEND:

— A —	EXISTING AERIAL LINE	— — —	PROPOSED STORM SEWER
— CTV —	EXISTING UNDERGROUND CABLE TV	— — —	PROPOSED PIPE UNDERDRAIN
— E —	EXISTING UNDERGROUND ELECTRIC	— — —	PROPOSED STORM SEWER STRUCTURE CALLOUTS
— FO —	EXISTING UNDERGROUND FIBER OPTIC	— — —	PROPOSED STORM SEWER PIPE CALLOUTS
— IG —	EXISTING UNDERGROUND GAS LINE	— — —	SAG
— S —	EXISTING UNDERGROUND SANITARY SEWER	— — —	SUMMIT
— T —	EXISTING UNDERGROUND TELEPHONE	— — —	DITCH
— W —	EXISTING UNDERGROUND WATER	— — —	SWALE
		— — —	MANHOLE



FILE NAME =	DESIGNED - WLS	REVISED -		STATE OF ILLINOIS DEPARTMENT OF TRANSPORTATION		I-74 DRAINAGE STAGING PLAN STA 516+00 TO STA 531+00		F.A.I. RTE.	SECTION	COUNTY	TOTAL SHEETS	SHEET NO.
...D468620-sh1-1-74-MDT-drain04.dgn	DRAWN - I S	REVISED -						90-114R(14HB-4,14,14HVB)BR	TAZEWELL	2433	1313	
USER NAME = toddbenk	CHECKED - JNR	REVISED -						CONTRACT NO. 68620				
PLOT DATE = 7/17/2012	DATE - JULY 20, 2012	REVISED -						ILLINOIS FED. AID PROJECT				