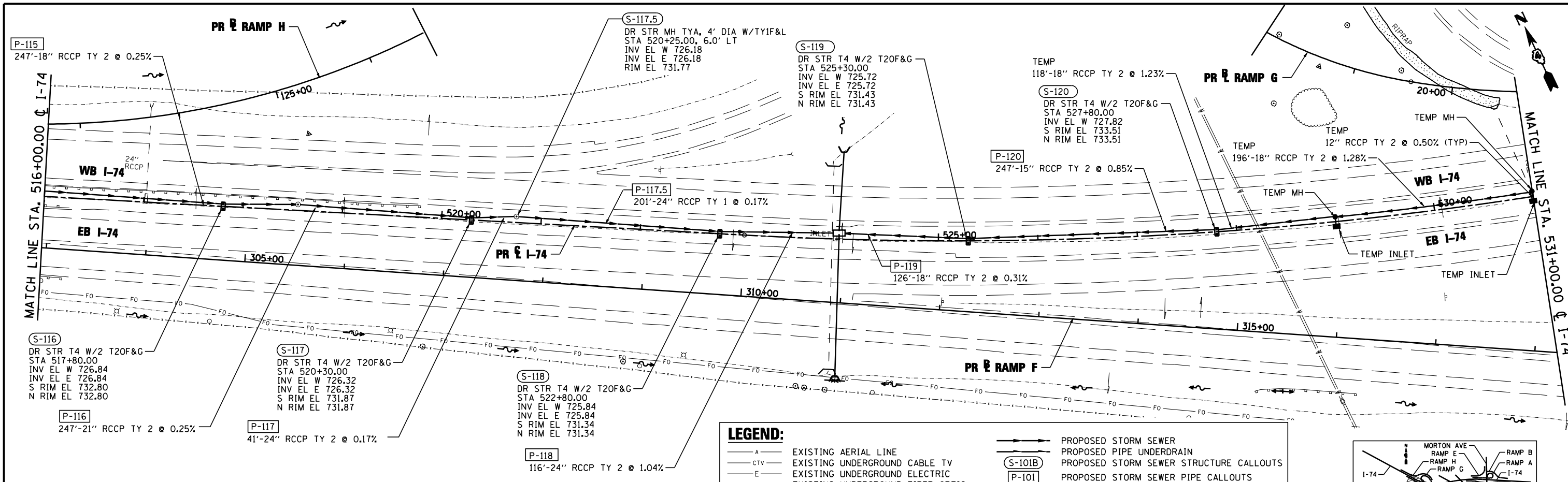


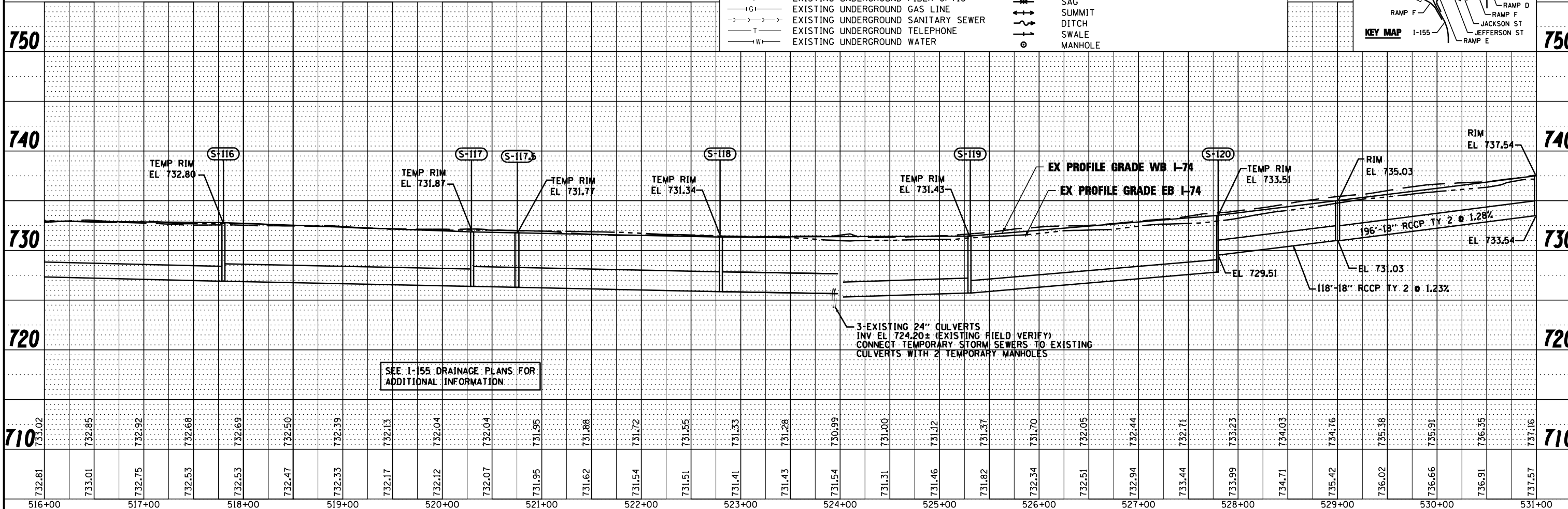
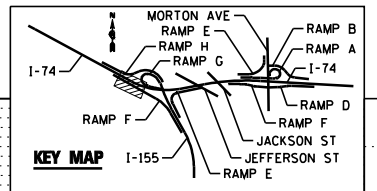
PLAN	SURVEYED	DATE
	PLOTTED	BY
	CHECKED	
	ALIGNED	
	FILE NAME	
	NO.	

PROFILE	SURVEYED	DATE
	PLOTTED	BY
	CHECKED	
	GRADES	
	STRUCTURE	
	NOT AT THIS OFFICE	
	NO.	



LEGEND:

- A- EXISTING AERIAL LINE
- CTV- EXISTING UNDERGROUND CABLE TV
- E- EXISTING UNDERGROUND ELECTRIC
- FO- EXISTING UNDERGROUND FIBER OPTIC
- IG- EXISTING UNDERGROUND GAS LINE
- T- EXISTING UNDERGROUND SANITARY SEWER
- TW- EXISTING UNDERGROUND TELEPHONE
- IW- EXISTING UNDERGROUND WATER
- PROPOSED STORM SEWER
- PROPOSED PIPE UNDERDRAIN
- (S-101B) PROPOSED STORM SEWER STRUCTURE CALLOUTS
- (P-101) PROPOSED STORM SEWER PIPE CALLOUTS
- SAG
- ▲ SUMMIT
- DITCH
- SWALE
- MANHOLE



SEE I-155 DRAINAGE PLANS FOR ADDITIONAL INFORMATION

3-EXISTING 24" CULVERTS
INV EL 724.20± (EXISTING FIELD VERIFY)
CONNECT TEMPORARY STORM SEWERS TO EXISTING
CULVERTS WITH 2 TEMPORARY MANHOLES

FILE NAME =	DESIGNED - WLS	REVISED -		STATE OF ILLINOIS DEPARTMENT OF TRANSPORTATION				I-74 TEMPORARY STORM SEWER PLAN STA 516+00 TO STA 531+00				F.A.I. RTE.	SECTION	COUNTY	TOTAL SHEETS	SHEET NO.
...\\D468620-sht-1-74-TEMP-MDTd-ain17.dgn	DRAWN - I S	REVISED -										90-114R(14HB-4,14,14HVB)BR	TAZEWELL	2433	1328	
USER NAME = jreambillo	CHECKED - JNR	REVISED -										CONTRACT NO. 68620				
PLOT DATE = 7/26/2012	DATE - JULY 20, 2012	REVISED -										ILLINOIS FED. AID PROJECT				