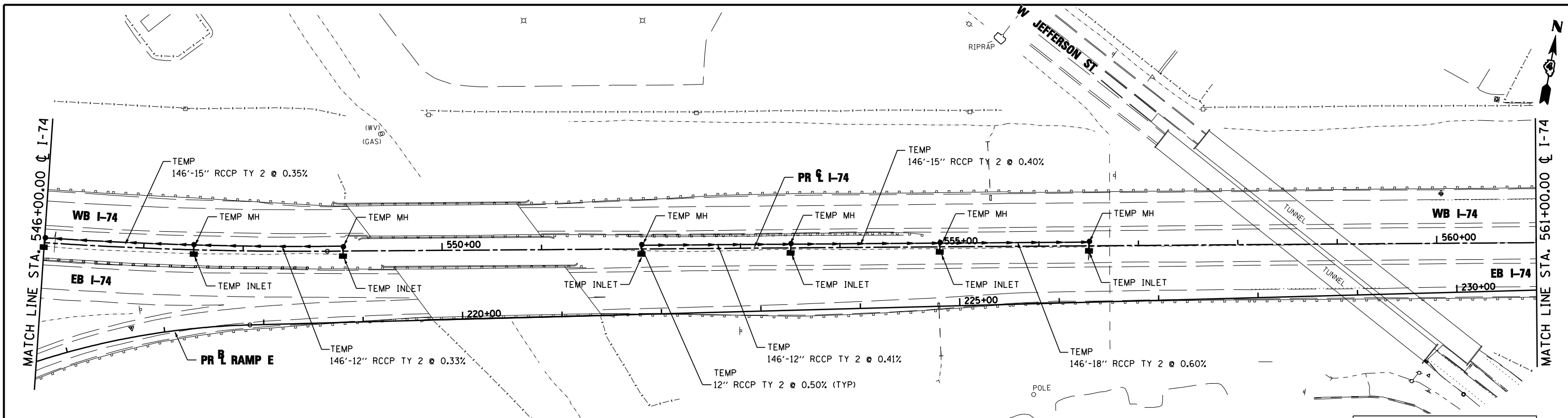


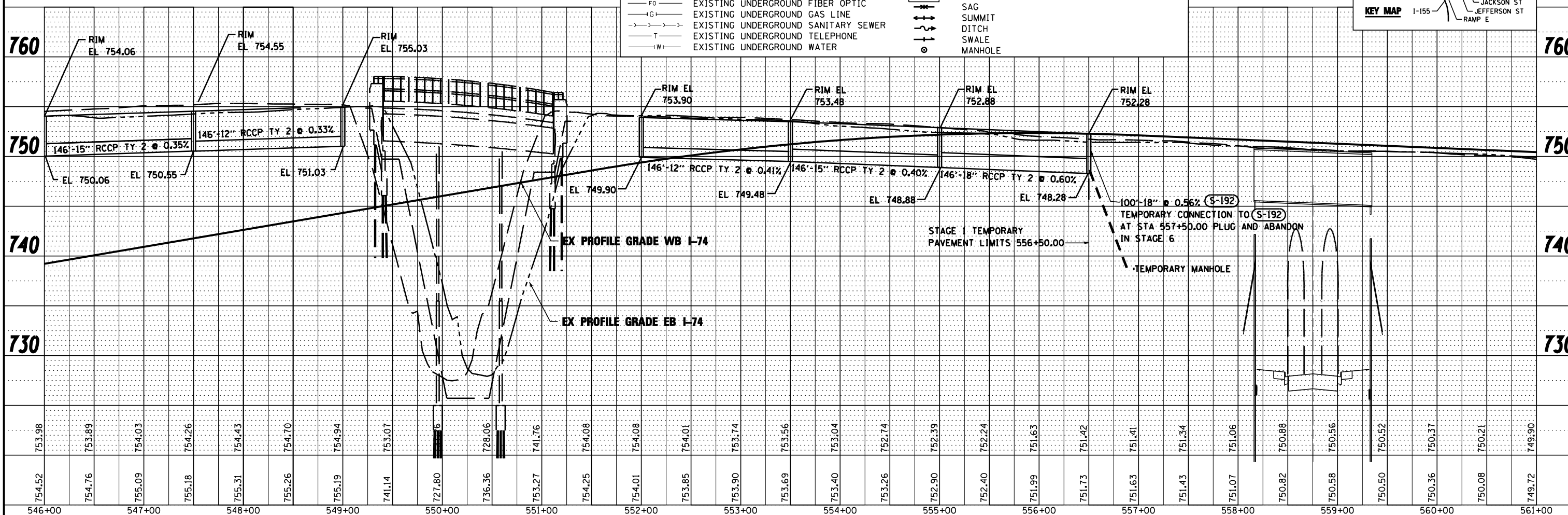
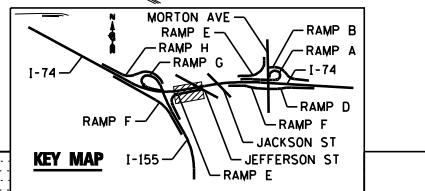
PLAN	SURVEYED	BY	DATE
	PLOTTED		
	CHECKED		
	AT		
	NO. _____		
	NO. _____		
	NO. _____		

PROFILE	SURVEYED	BY	DATE
	PLOTTED		
	CHECKED		
	AT		
	NO. _____		
	NO. _____		
	NO. _____		



LEGEND:

- A — EXISTING AERIAL LINE
- CTV — EXISTING UNDERGROUND CABLE TV
- E — EXISTING UNDERGROUND ELECTRIC
- FO — EXISTING UNDERGROUND FIBER OPTIC
- IG — EXISTING UNDERGROUND GAS LINE
- S — EXISTING UNDERGROUND SANITARY SEWER
- T — EXISTING UNDERGROUND TELEPHONE
- W — EXISTING UNDERGROUND WATER
- PROPOSED STORM SEWER
- PROPOSED PIPE UNDERDRAIN
- (S-101B) — PROPOSED STORM SEWER STRUCTURE CALLOUTS
- (P-101) — PROPOSED STORM SEWER PIPE CALLOUTS
- SAG
- SUMMIT
- DITCH
- SWALE
- — MANHOLE



FILE NAME =	DESIGNED - WLS	REVISED -		STATE OF ILLINOIS DEPARTMENT OF TRANSPORTATION		I-74 TEMPORARY STORM SEWER PLAN STA 546+00 TO STA 561+00		F.A.I. SECTION	COUNTY	TOTAL SHEETS	SHEET NO.
...D468620-sht-1-74-TEMP-MDTd-ain19.dgn	DRAWN - I S	REVISED -						90-[14R(14HB-4,14,14HVB)BR]	TAZEWELL	2433	1330
USER NAME = toddbenk	CHECKED - JNR	REVISED -						CONTRACT NO. 68620			
PLOT DATE = 7/17/2012	DATE - JULY 20, 2012	REVISED -	SCALE:		SHEET NO. 4 OF 4 SHEETS	STA.	TO STA.	ILLINOIS FED. AID PROJECT			