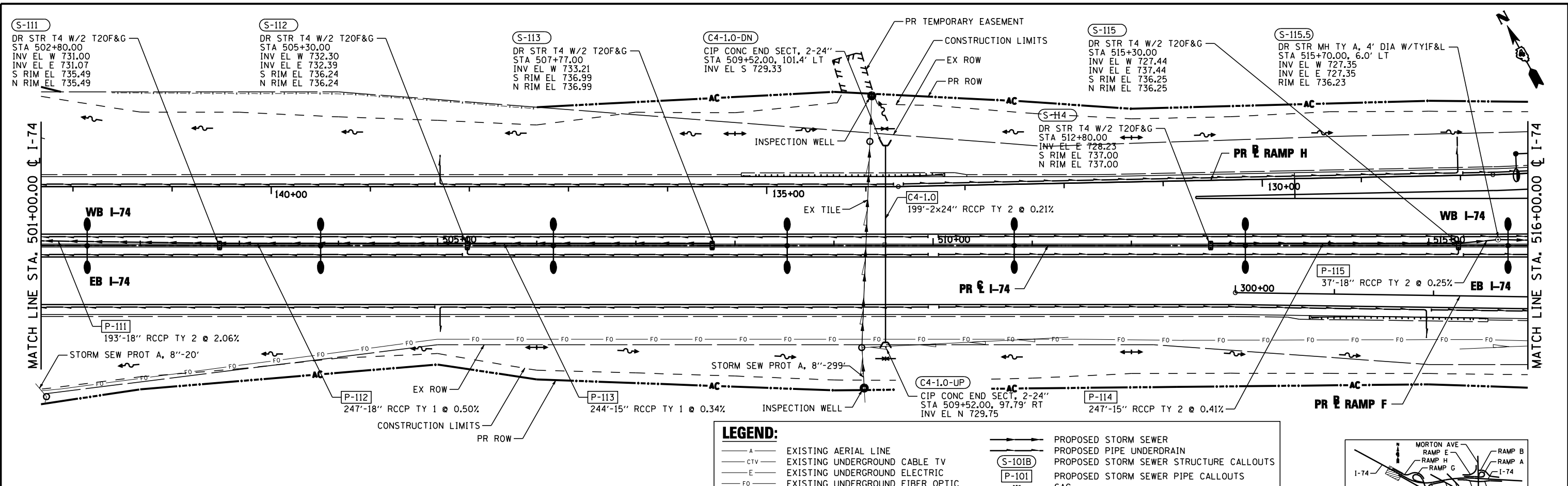


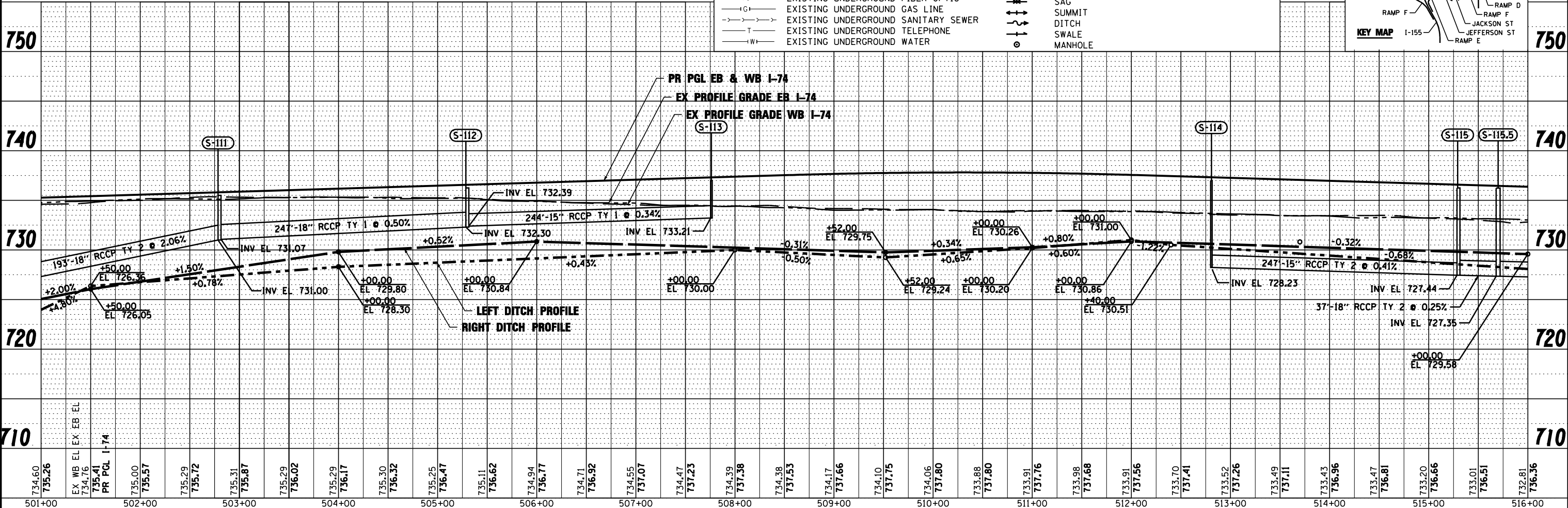
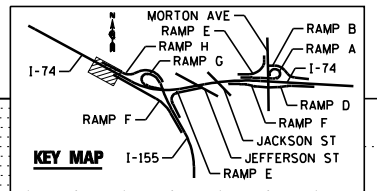
PLAN	SURVEYED	DATE
	PLOTTED	BY
	NOTED	
	CHECKED	
	APPROVED	
	NO. _____	
	FILE NAME	

PROFILE	SURVEYED	DATE
	PLOTTED	BY
	NOTED	
	CHECKED	
	APPROVED	
	NO. _____	
	FILE NAME	



**LEGEND:**

- A — EXISTING AERIAL LINE
- CTV — EXISTING UNDERGROUND CABLE TV
- E — EXISTING UNDERGROUND ELECTRIC
- FO — EXISTING UNDERGROUND FIBER OPTIC
- IG — EXISTING UNDERGROUND GAS LINE
- S — EXISTING UNDERGROUND SANITARY SEWER
- T — EXISTING UNDERGROUND TELEPHONE
- W — EXISTING UNDERGROUND WATER
- PROPOSED STORM SEWER
- PROPOSED PIPE UNDERDRAIN
- (S-101B) — PROPOSED STORM SEWER STRUCTURE CALLOUTS
- (P-101) — PROPOSED STORM SEWER PIPE CALLOUTS
- SAG
- SUMMIT
- DITCH
- SWALE
- MANHOLE



FILE NAME =	DESIGNED - EJA	REVISED -		STATE OF ILLINOIS DEPARTMENT OF TRANSPORTATION			DRAINAGE AND UTILITY PLAN AND PROFILE I-74			F.A.I. RTE.	SECTION	COUNTY	TOTAL SHEETS	SHEET NO.
...\\D468620\sh-1-74\drain04.dgn	DRAWN - TMB	REVISED -		SCALE: 1"=50'			SHEET NO. 4 OF 13 SHEETS			90-114R(14HB-4,14,14HVB)BR	TAZEWELL	2433	1417	
USER NAME = jreambillo	CHECKED - JNR	REVISED -		STA. 501+00.00 TO STA. 516+00.00			CONTRACT NO. 68620			ILLINOIS FED. AID PROJECT				
PLOT DATE = 7/26/2012	DATE - JULY 20, 2012	REVISED -												