

S-222.1
 INL TY A W/TY1 F&L
 STA 14+00.00, 40.00' RT
 INV EL 735.02
 RIM EL 738.80

S-222.2
 DR STR FES 15"
 STA 14+00.00, 101.70' RT
 INV EL 734.00

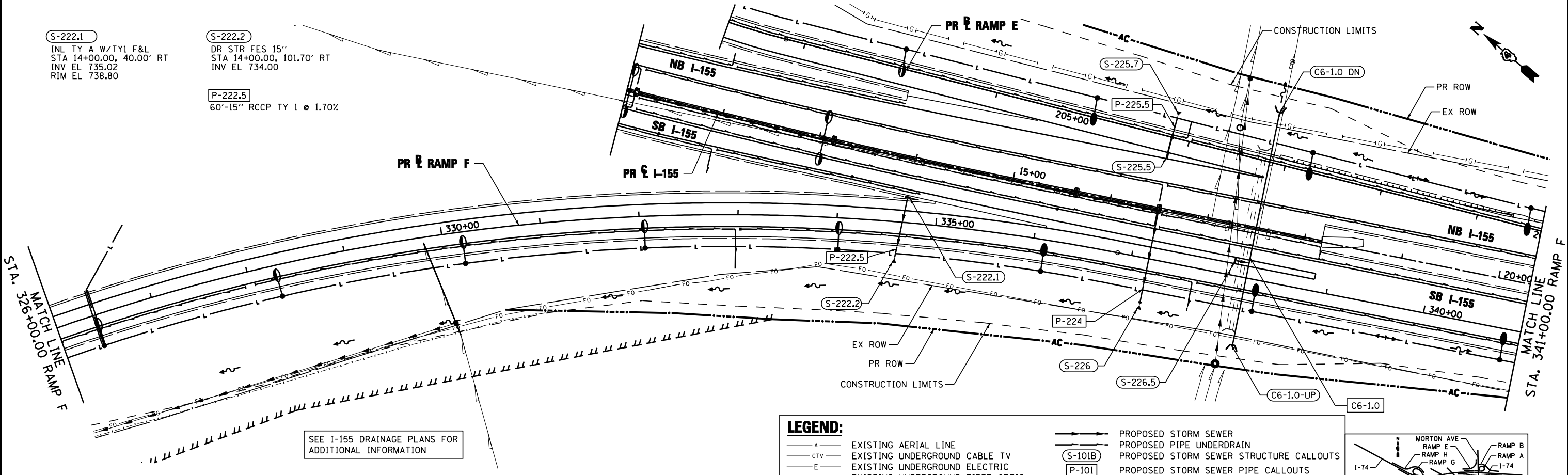
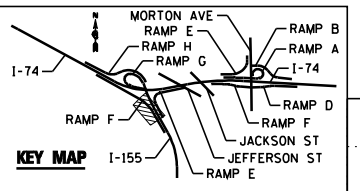
P-222.5
 60'-15" RCCP TY 1 @ 1.70%

SEE I-155 DRAINAGE PLANS FOR
 ADDITIONAL INFORMATION

LEGEND:

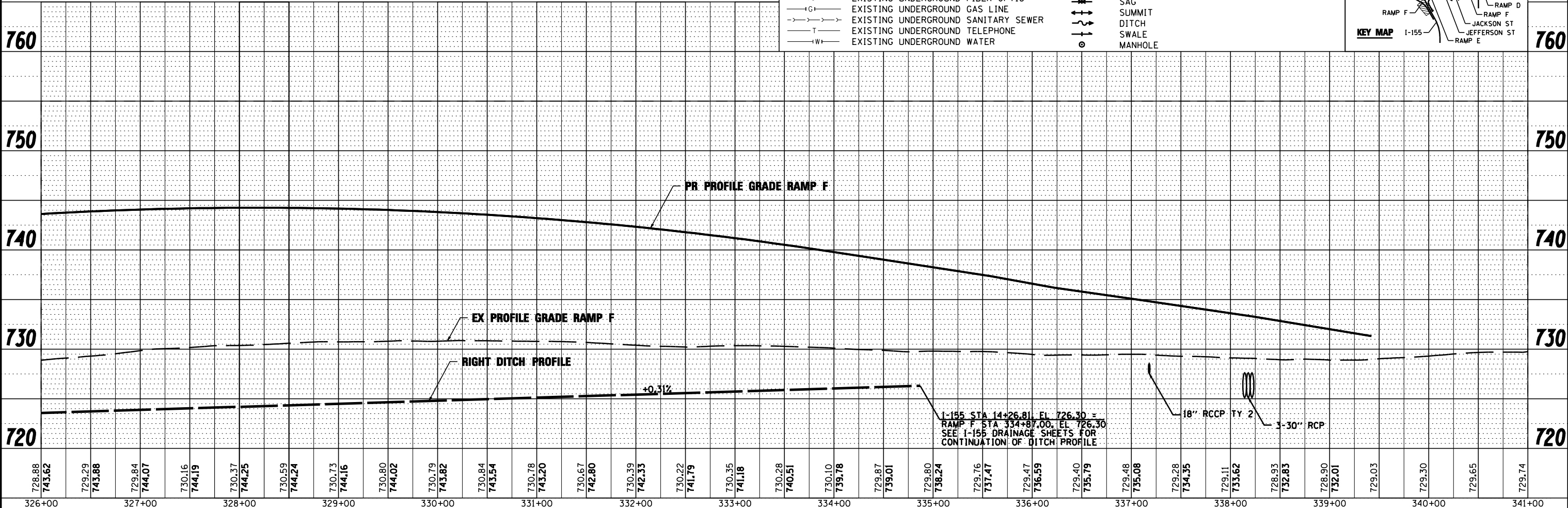
- A — EXISTING AERIAL LINE
- CTV — EXISTING UNDERGROUND CABLE TV
- E — EXISTING UNDERGROUND ELECTRIC
- FO — EXISTING UNDERGROUND FIBER OPTIC
- IGT — EXISTING UNDERGROUND GAS LINE
- S — EXISTING UNDERGROUND SANITARY SEWER
- T — EXISTING UNDERGROUND TELEPHONE
- W — EXISTING UNDERGROUND WATER

- PROPOSED STORM SEWER
- (S-101B) — PROPOSED PIPE UNDERDRAIN
- (P-101) — PROPOSED STORM SEWER STRUCTURE CALLOUTS
- PROPOSED STORM SEWER PIPE CALLOUTS
- SAG — SAG
- SUMMIT
- DITCH
- SWALE
- o — MANHOLE



PLAN	SURVEYED	DATE
	PLOTTED	
	CHECKED	
	AT	
	BY	
	NO.	

PROFILE	SURVEYED	DATE
	PLOTTED	
	CHECKED	
	AT	
	BY	
	NO.	



FILE NAME =	DESIGNED -	REVISED -
...D468620-sh1-1-155-RampF-drain22.dgn	DRAWN - TMB	REVISED -
USER NAME = toddbenk	CHECKED - JNR	REVISED -
PLOT DATE = 7/17/2012	DATE - JULY 20, 2012	REVISED -



**STATE OF ILLINOIS
 DEPARTMENT OF TRANSPORTATION**

**DRAINAGE AND UTILITY PLAN AND PROFILE
 I-155 RAMP F**
 SCALE: 1"=50' SHEET NO. 4 OF 8 SHEETS STA. 326+00.00 TO STA. 341+00.00

F.A.I. RTE.	SECTION	COUNTY	TOTAL SHEETS	SHEET NO.
90-114R(14HB-4,14,14HVB)BR	TAZEWELL	2433	1433	
CONTRACT NO. 68620				
ILLINOIS FED. AID PROJECT				