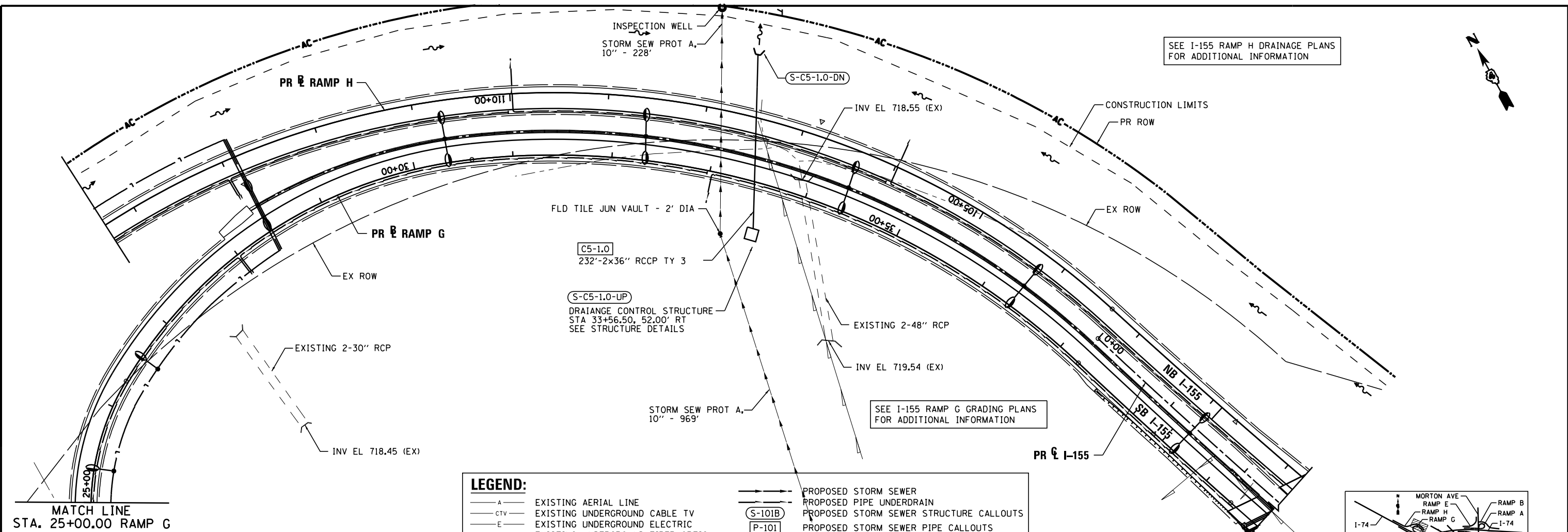


PLAN	SURVEYED	DATE
	PLOTTED	BY
	ALIGNED	CHECKED
	NOTE BOOK	NO.
	FILE NAME	

PROFILE	SURVEYED	DATE
	PLOTTED	BY
	GRADES CHECKED	CHECKED
	NOTE BOOK	NO.
	STRUCTURE	NOTATIONS
	CHPND	

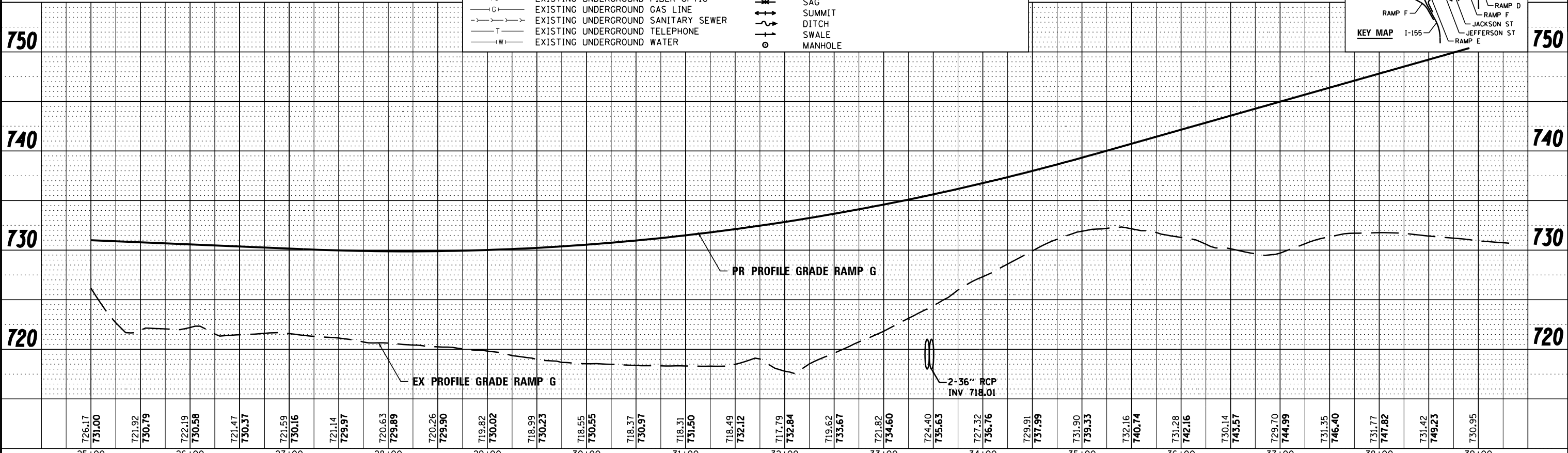
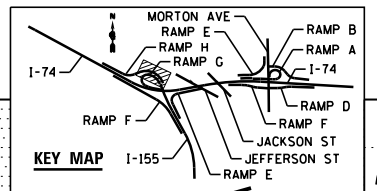


SEE I-155 RAMP H DRAINAGE PLANS FOR ADDITIONAL INFORMATION

SEE I-155 RAMP G GRADING PLANS FOR ADDITIONAL INFORMATION

LEGEND:

- A- EXISTING AERIAL LINE
- CTV- EXISTING UNDERGROUND CABLE TV
- E- EXISTING UNDERGROUND ELECTRIC
- FO- EXISTING UNDERGROUND FIBER OPTIC
- G- EXISTING UNDERGROUND GAS LINE
- S- EXISTING UNDERGROUND SANITARY SEWER
- T- EXISTING UNDERGROUND TELEPHONE
- W- EXISTING UNDERGROUND WATER
- PROPOSED STORM SEWER
- PROPOSED PIPE UNDERDRAIN
- (S-101B) PROPOSED STORM SEWER STRUCTURE CALLOUTS
- (P-101) PROPOSED STORM SEWER PIPE CALLOUTS
- SAG
- SUMMIT
- DITCH
- SWALE
- MANHOLE



FILE NAME =	DESIGNED - AJP	REVISED -		STATE OF ILLINOIS DEPARTMENT OF TRANSPORTATION	DRAINAGE AND UTILITY PLAN AND PROFILE I-155 RAMP G			F.A.I. RT.	SECTION	COUNTY	TOTAL SHEETS	SHEET NO.
...D468620-sh1-1-155-RampG-drain25.dgn	DRAWN - TMB	REVISED -			90-114R(14HB-4,14,14HV)BRJ	TAZEWELL	2433	1435				
USER NAME = tblank	CHECKED - JNR	REVISED -			SCALE: 1"=50' SHEET NO. 6 OF 8 SHEETS STA. 25+00.00 TO STA. POE			CONTRACT NO. 68620				
PLOT DATE = 7/19/2012	DATE - JULY 20, 2012	REVISED -			ILLINOIS FED. AID PROJECT							