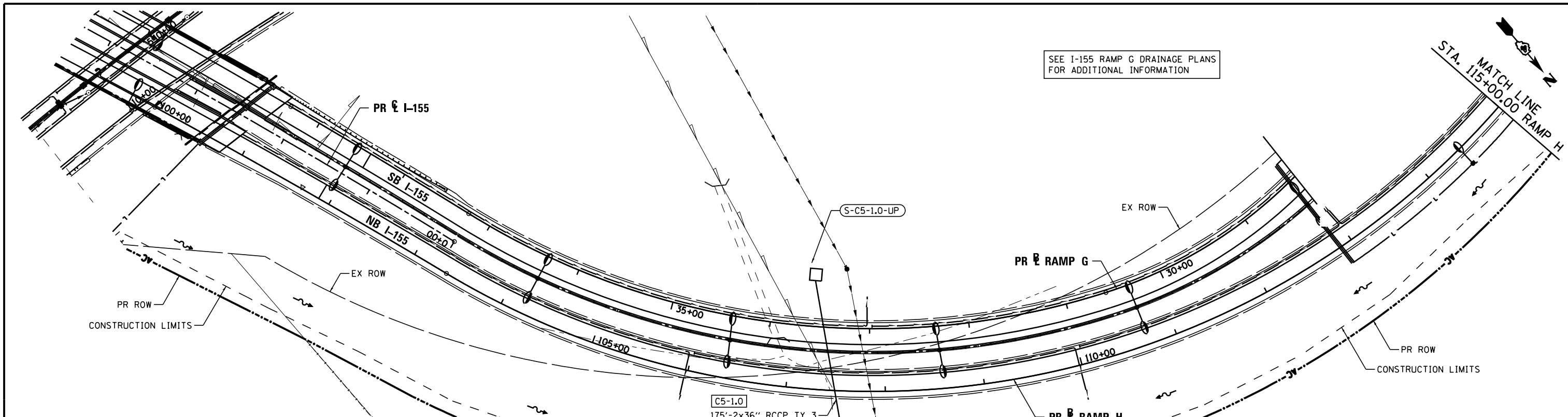


PLAN	SURVEYED	DATE
	PLOTTED	BY
	ALIGNED	
	CHECKED	
	FILED	
	NO.	
	NO.	
	NO.	

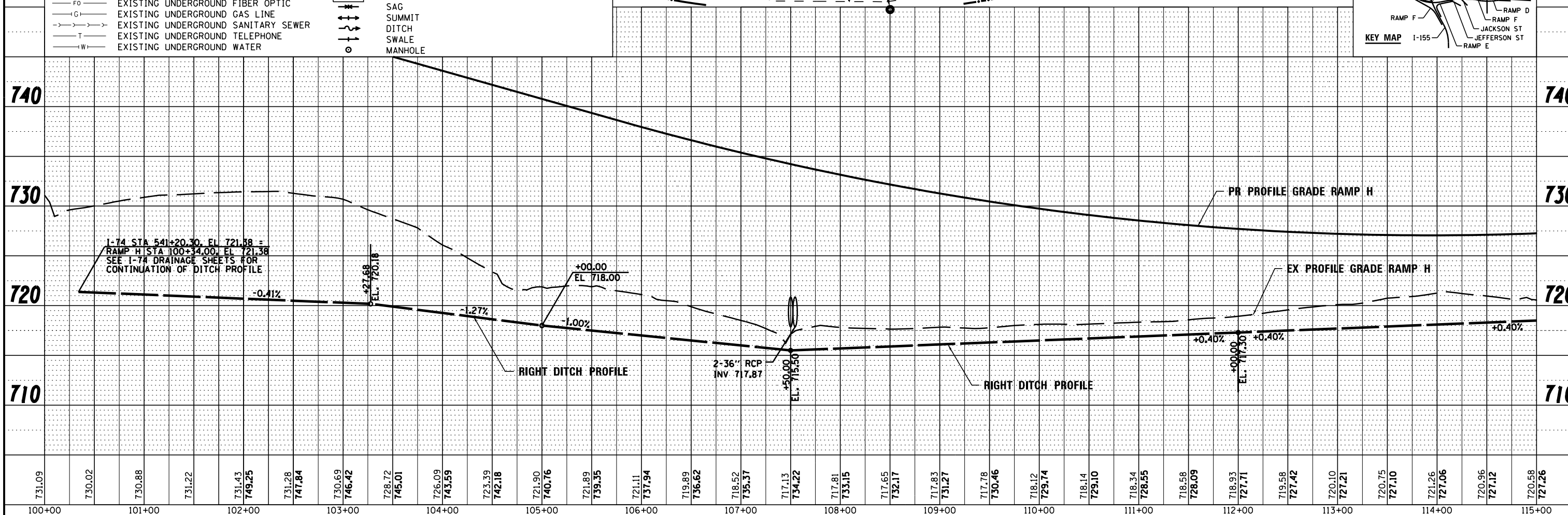
PROFILE	SURVEYED	DATE
	PLOTTED	BY
	GRADES CHECKED	
	STRUCTURE NOTATIONS CHECKED	
	NO.	
	NO.	
	NO.	



SEE I-155 RAMP G DRAINAGE PLANS FOR ADDITIONAL INFORMATION

LEGEND:

- A- EXISTING AERIAL LINE
- CTV- EXISTING UNDERGROUND CABLE TV
- E- EXISTING UNDERGROUND ELECTRIC
- FO- EXISTING UNDERGROUND FIBER OPTIC
- G- EXISTING UNDERGROUND GAS LINE
- SS- EXISTING UNDERGROUND SANITARY SEWER
- T- EXISTING UNDERGROUND TELEPHONE
- W- EXISTING UNDERGROUND WATER
- PROPOSED STORM SEWER
- PROPOSED PIPE UNDERDRAIN
- (S-101B) PROPOSED STORM SEWER STRUCTURE CALLOUTS
- (P-101) PROPOSED STORM SEWER PIPE CALLOUTS
- SAG
- SUMMIT
- DITCH
- SWALE
- o MANHOLE



FILE NAME -	DESIGNED - AJP	REVISED -
...D468620-sh1-1-155-RampH-drain26.dgn	DRAWN - TMB	REVISED -
USER NAME = tblank	CHECKED - JNR	REVISED -
PLOT DATE = 7/19/2012	DATE - JULY 20, 2012	REVISED -



STATE OF ILLINOIS
DEPARTMENT OF TRANSPORTATION

DRAINAGE AND UTILITY PLAN AND PROFILE
I-155 RAMP H
SCALE: 1"=50' SHEET NO. 7 OF 8 SHEETS STA. POB TO STA. 113+00.00

F.A.I. RTE.	SECTION	COUNTY	TOTAL SHEETS	SHEET NO.
90-[14R(14HB-4,14,14HVB)BR]	TAZEWELL	ILLINOIS	2433	1436
CONTRACT NO. 68620			ILLINOIS FED. AID PROJECT	