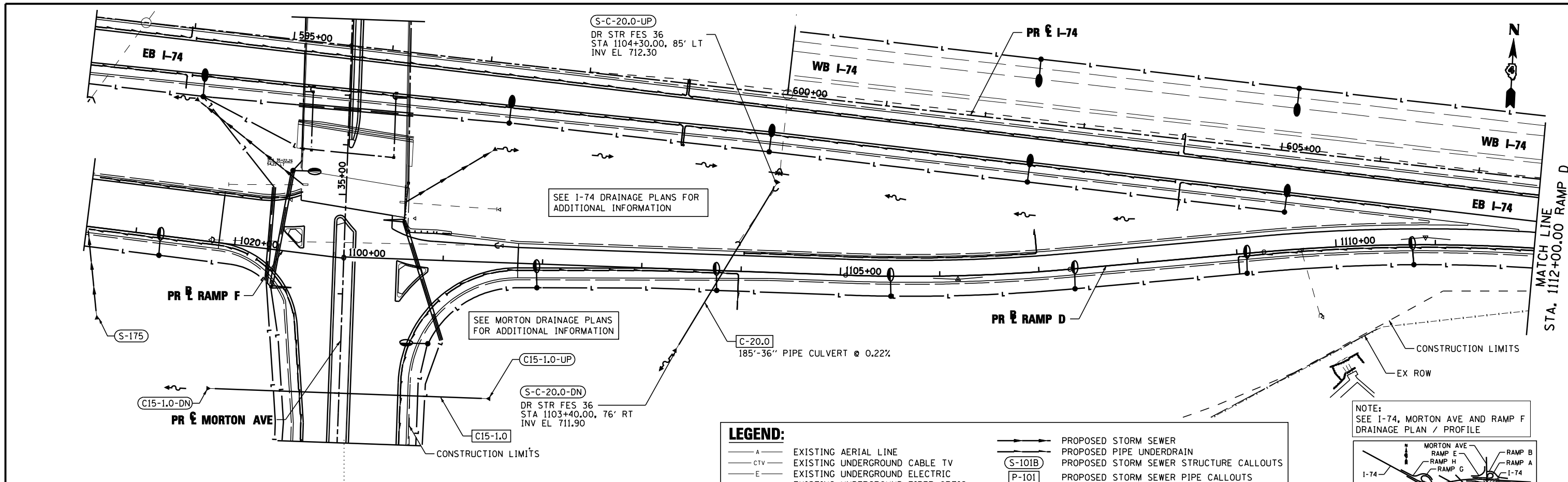


PLAN	SURVEYED	DATE
	PLOTTED	BY
	CHECKED	
	AT	
	FILE NAME	
	NO.	

PROFILE	SURVEYED	DATE
	PLOTTED	BY
	CHECKED	
	AT	
	STRUCTURE	
	NOT AT THIS OFFICE	
	NO.	



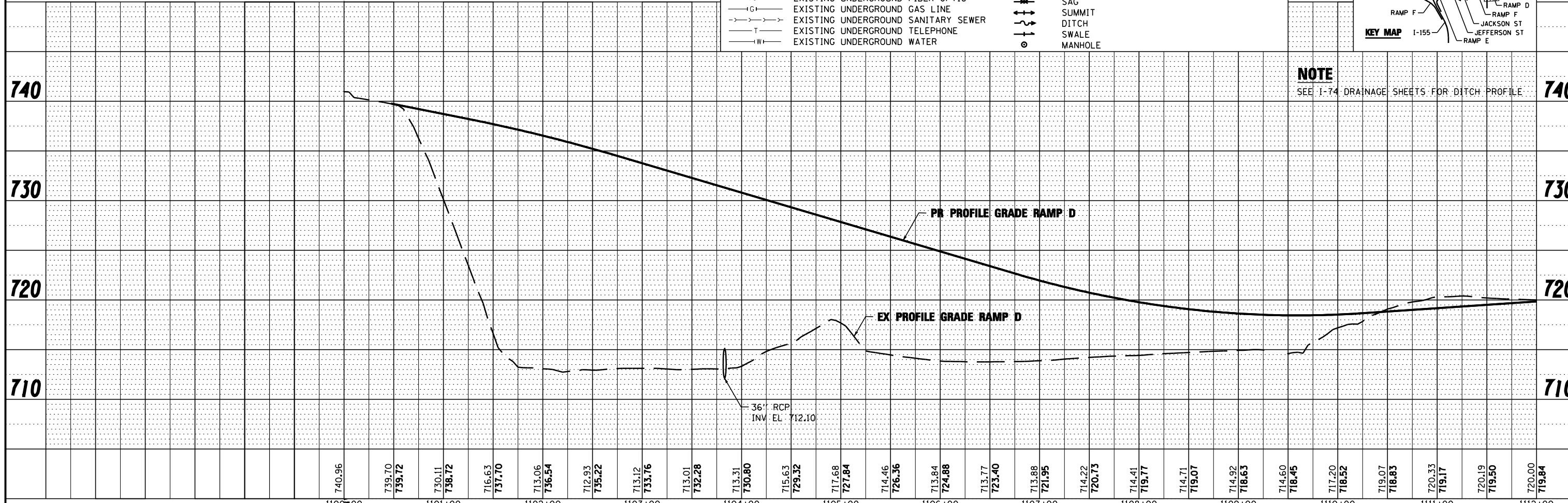
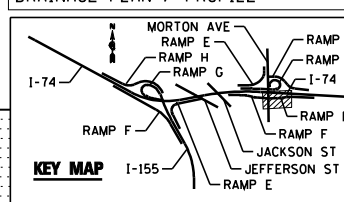
SEE I-74 DRAINAGE PLANS FOR ADDITIONAL INFORMATION

SEE MORTON DRAINAGE PLANS FOR ADDITIONAL INFORMATION

**LEGEND:**

- A- EXISTING AERIAL LINE
- CTV- EXISTING UNDERGROUND CABLE TV
- E- EXISTING UNDERGROUND ELECTRIC
- FO- EXISTING UNDERGROUND FIBER OPTIC
- G- EXISTING UNDERGROUND GAS LINE
- S- EXISTING UNDERGROUND SANITARY SEWER
- T- EXISTING UNDERGROUND TELEPHONE
- W- EXISTING UNDERGROUND WATER
- PROPOSED STORM SEWER
- PROPOSED PIPE UNDERDRAIN
- (S-101B) PROPOSED STORM SEWER STRUCTURE CALLOUTS
- (P-101) PROPOSED STORM SEWER PIPE CALLOUTS
- SAG
- SUMMIT
- DITCH
- SWALE
- MANHOLE

NOTE: SEE I-74, MORTON AVE AND RAMP F DRAINAGE PLAN / PROFILE



NOTE: SEE I-74 DRAINAGE SHEETS FOR DITCH PROFILE

FILE NAME =	DESIGNED - I S	REVISED -		<b>STATE OF ILLINOIS</b> <b>DEPARTMENT OF TRANSPORTATION</b>	<b>DRAINAGE AND UTILITY PLAN AND PROFILE</b> <b>RAMP D MORTON AVE</b>	SCALE: 1"=50'    SHEET NO. 1 OF 3 SHEETS    STA. POB TO STA. 1112+00.00	F.A.I. SECTION	COUNTY	TOTAL SHEETS	SHEET NO.
...D468620-sh1-rampD-Morton-drain36.dgn	DRAWN - TMB	REVISED -					90-114R(14HB-4,14,14HVB)BR	TAZEWELL	2433	1444
USER NAME = toddbenk	CHECKED - JNR	REVISED -					CONTRACT NO. 68620			
PLOT DATE = 7/17/2012	DATE - JULY 20, 2012	REVISED -					ILLINOIS FED. AID PROJECT			