

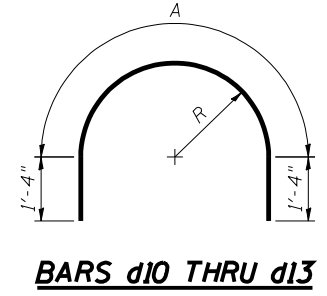
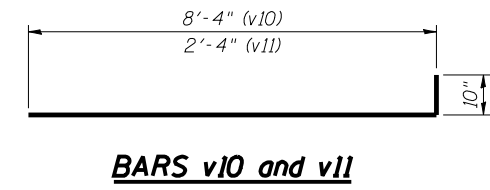
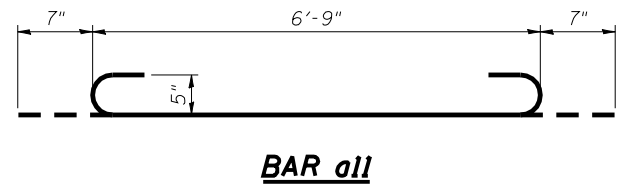
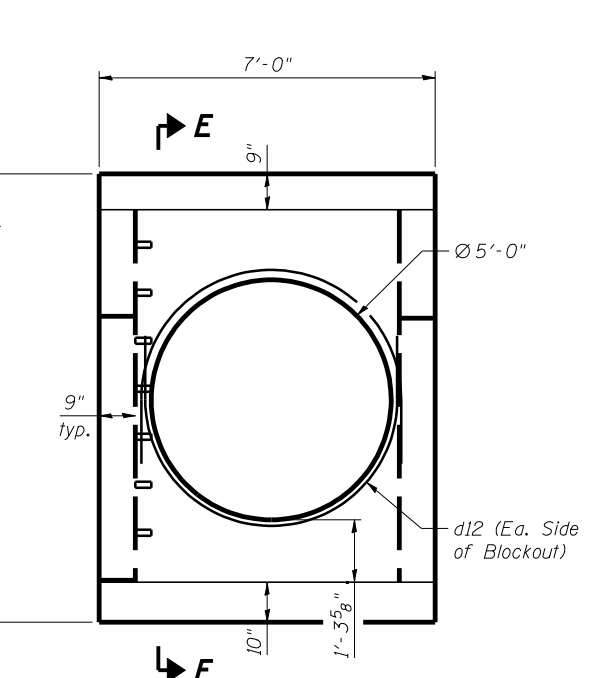
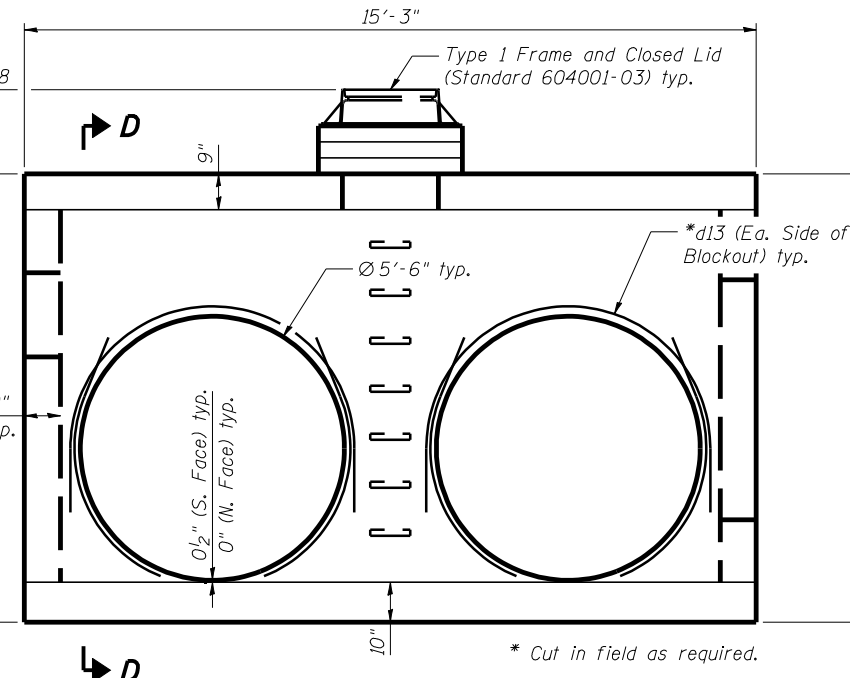
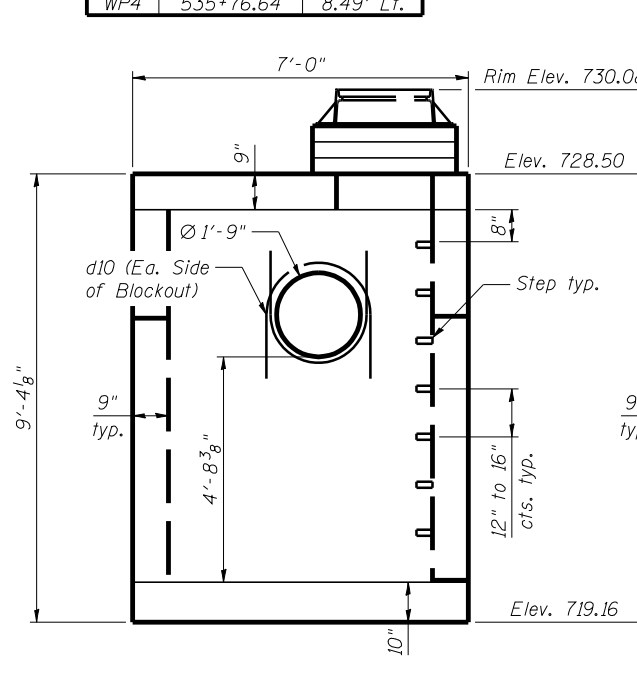
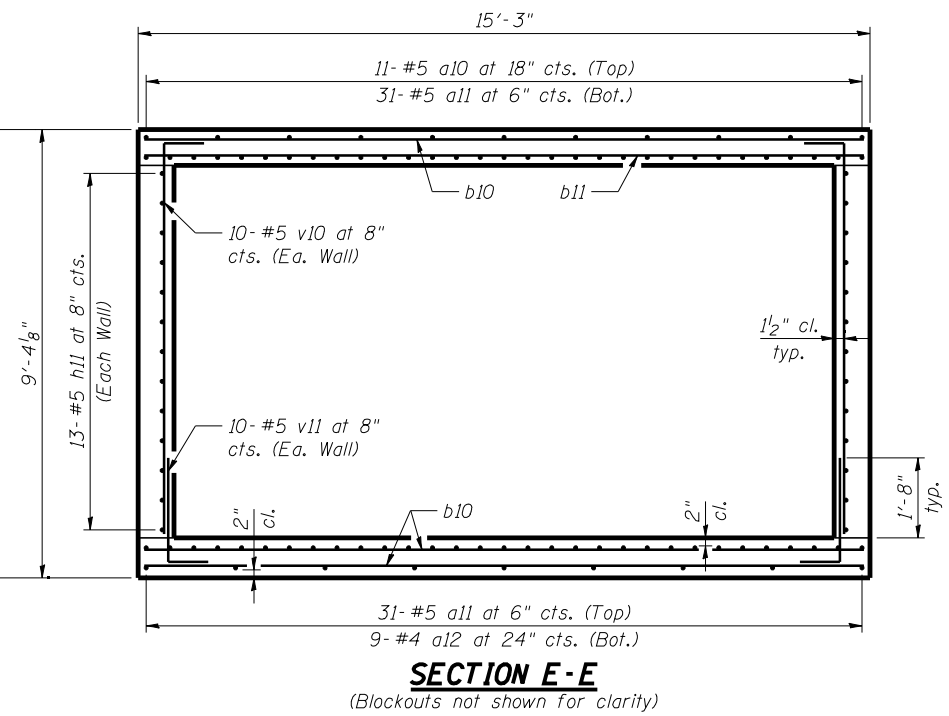
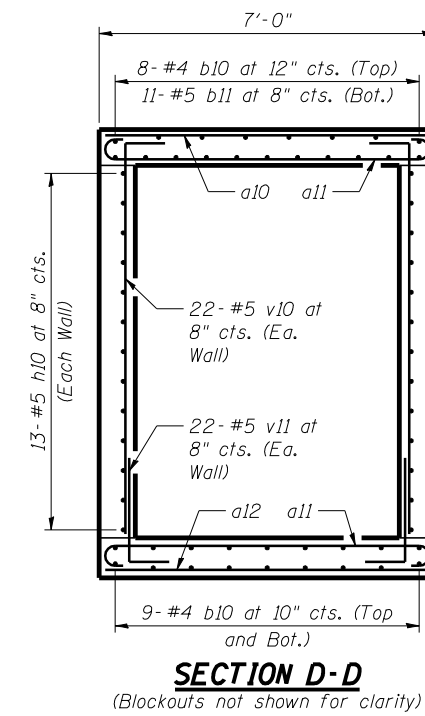
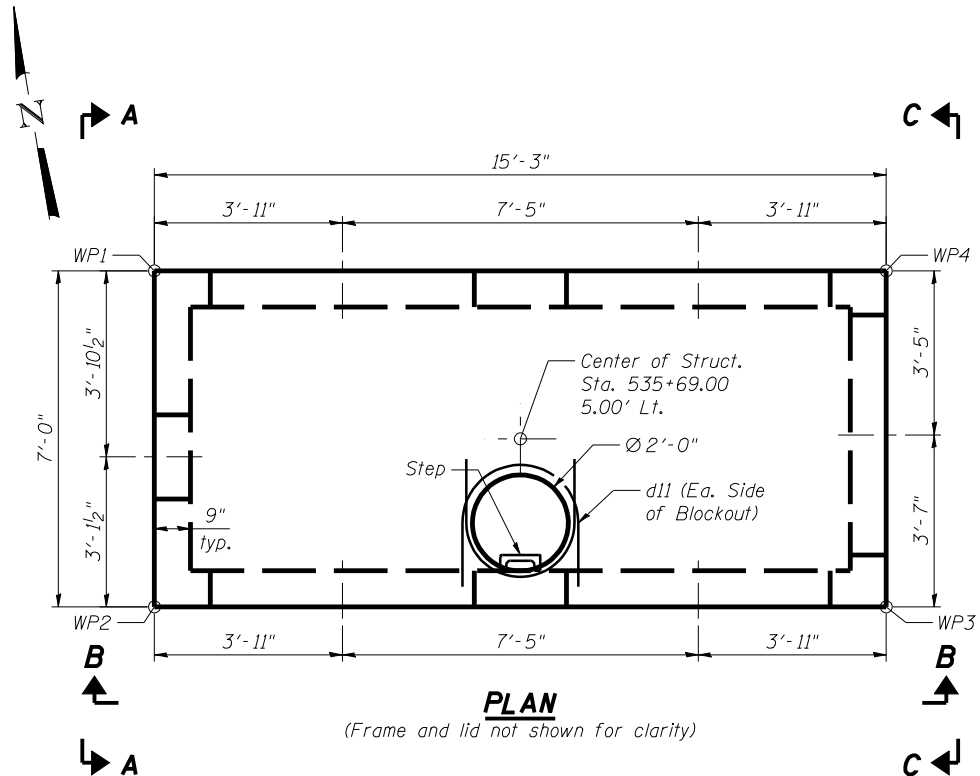
**\*BILL OF MATERIAL**

Bar	No.	Size	Length	Shape
a10	11	#5	6'-9"	
a11	62	#5	7'-11"	
a12	9	#4	6'-9"	
b10	26	#4	15'-0"	
b11	11	#5	15'-0"	
d10	2	#4	6'-0"	
d11	2	#4	6'-4"	
d12	2	#4	11'-1"	
d13	4	#4	11'-10"	
h10	26	#5	15'-0"	
h11	26	#5	6'-9"	
v10	64	#5	9'-2"	
v11	64	#5	3'-2"	
Concrete Structures	Cu. Yd.	11.9		
Reinforcement Bars	Pound	2,540		

\* For information only.

**WORK POINTS**

WP	Station	Offset
WP1	535+61.36	8.49' Lt.
WP2	535+61.37	1.49' Lt.
WP3	535+76.63	1.49' Lt.
WP4	535+76.64	8.49' Lt.



Bar	R	A
d10	1'-0 1/2"	3'-3 1/2"
d11	1'-2"	3'-8"
d12	2'-8"	8'-4 1/2"
d13	2'-11"	9'-2"

**NOTES:**

- Contractor shall verify all field dimensions prior to commencing work, including verification that the openings provided on this detail will accommodate the pipe sizes and inverts as given on the Drainage and Utility Plans.
- Reinforcement bars shall conform to the requirements of ASTM A706 Grade 60.
- All bar dimensions are out-to-out.
- Bars shall be cut in field as required to accommodate blockouts.
- See Std. 602701 for manhole step details.
- Quantities for Concrete Structures and Reinforcement Bars are for information only. All work and materials shown on this sheet shall be paid for as Junction Box, Number 2.
- All joints between pipe and structure shall be mortared from both sides.
- Contractor may install the pipe(s) that enter the structure with the cast-in-place concrete, without forming the holes noted separately, as approved by the Engineer. It shall be the Contractor's responsibility to provide compacted support for the pipe(s) to ensure no differential settlement will occur.

FILE NAME =	DESIGNED - MFH	REVISED -
...\\0468620-sh-t-JuncMH2.dgn	DRAWN - MFH	REVISED -
USER NAME = toddblank	CHECKED - SLD	REVISED -
PLOT DATE = 7/17/2012	DATE - JULY 20, 2012	REVISED -



**STATE OF ILLINOIS  
DEPARTMENT OF TRANSPORTATION**

**JUNCTION BOX NUMBER 2**

SCALE: NTS SHEET NO. 5 OF 7 SHEETS STA. TO STA.

F.A.I. RTE.	SECTION	COUNTY	TOTAL SHEETS	SHEET NO.
90-114R(14HB-4,14HBV)BR	TAZEWELL	2433	1461	
			<b>CONTRACT NO. 68620</b>	