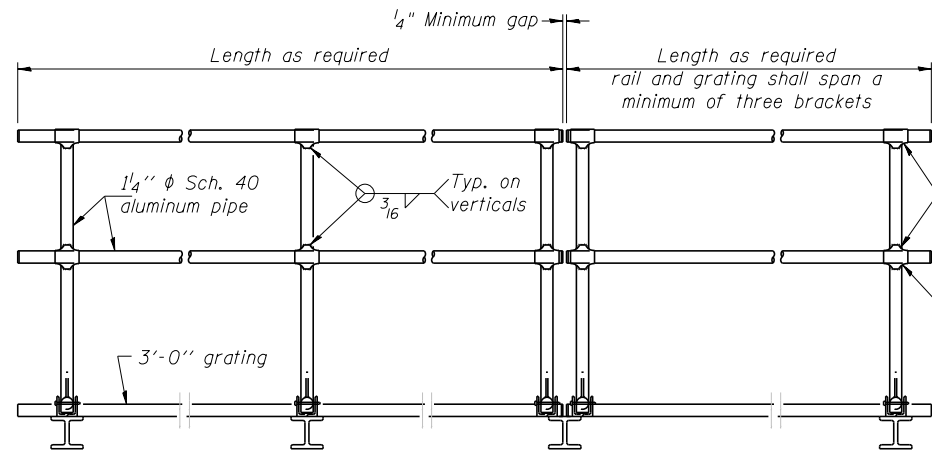
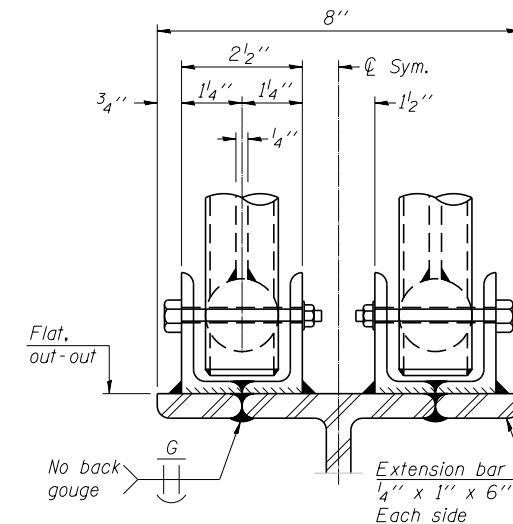


SIDE ELEVATION
(Showing safety chain w/o sign)



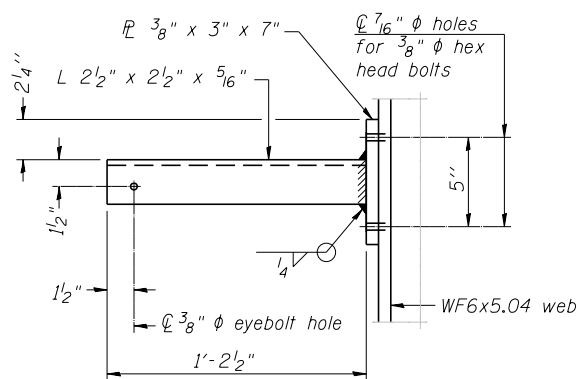
FRONT ELEVATION



ELEVATION AT HANDRAIL JOINT

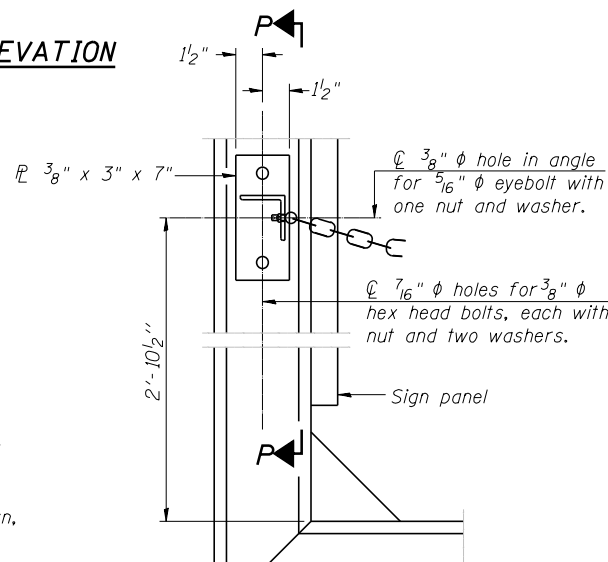
HANDRAIL DETAILS

Handrail pipe shall be ASTM B241, Alloy 6063-T6 or Alloy 6061-T6.



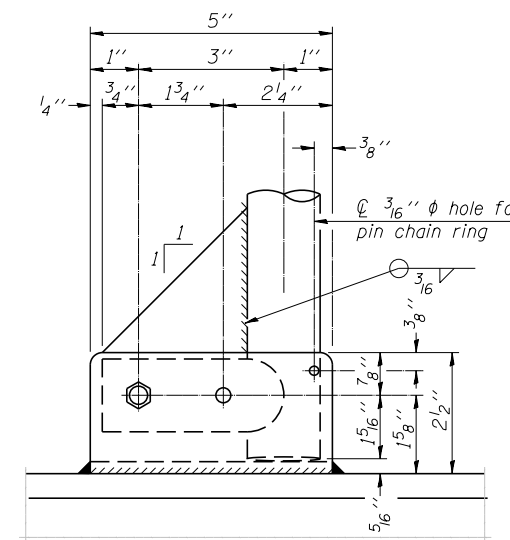
SECTION P-P

- ② Horizontal handrail member shall be continuous thru fitting. Provide 7/16" hole in fitting for 3/8" bolt. Field drill 7/16" hole in horizontal rail member. Provide washer and locknut for bolt. (Use 5/16" eyebolts in 7/16" holes on top rail at ends only.)
- ③ 3/16" type 304L stainless steel chain, approximately 12 links per foot.
- ④ Extrusions may be used in lieu of the details shown, with approval of the Engineer.

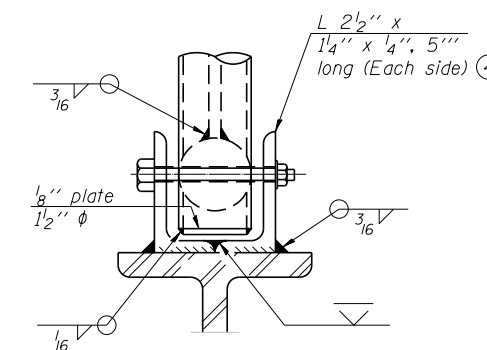


ALTERNATE SAFETY CHAIN ATTACHMENT

(With Sign Present)
Items not shown same as "Side Elevation" of "Handrail Details"

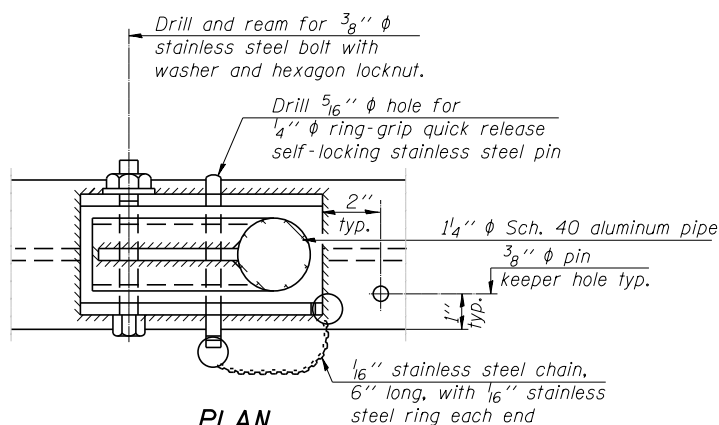


SIDE ELEVATION

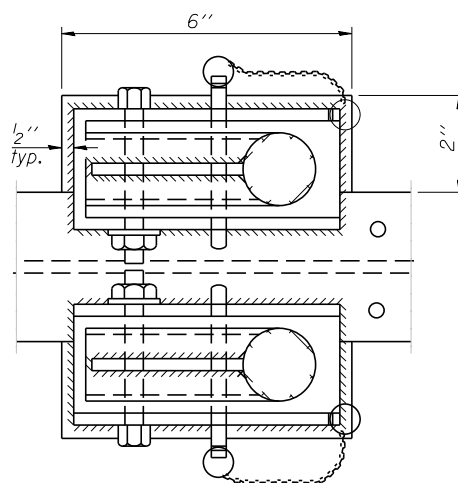


FRONT ELEVATION

See "ELEVATION" at right for dimensions.

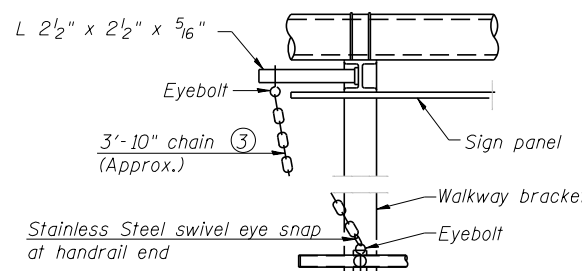


PLAN
DETAIL E HANDRAIL HINGE



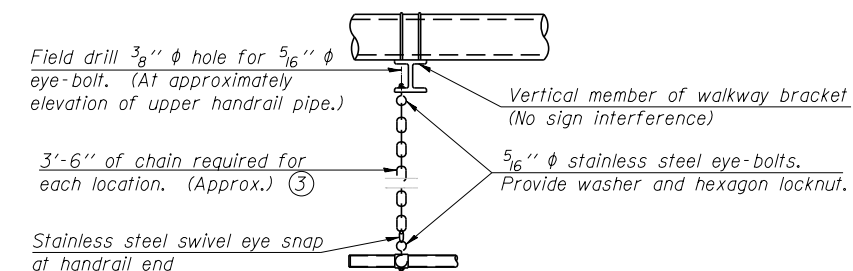
PLAN AT HANDRAIL JOINT

Details not shown same as "PLAN"



ALTERNATE SAFETY CHAIN ATTACHMENT

Details not shown similar to "Safety Chain" Details
(Walkway omitted for clarity)



SAFETY CHAIN

One required for each end of each walkway.

FILE NAME =	USER NAME = mbecker	DESIGNED - MFB	REVISED -
xxxxxx_68620.16_hr2.dgn	PLOT SCALE =	CHECKED - KJN	REVISED -
	PLOT DATE = 7/16/2012	DRAWN - MFB	REVISED -
		CHECKED - KJN	REVISED -

F.A.I. RTE.	SECTION	COUNTY	TOTAL SHEETS	SHEET NO.
74	90-[14R(14HB-4,14,14HV)BR]	TAZEWELL	2433	1636
CONTRACT NO. 68620				
ILLINOIS FED. AID PROJECT				