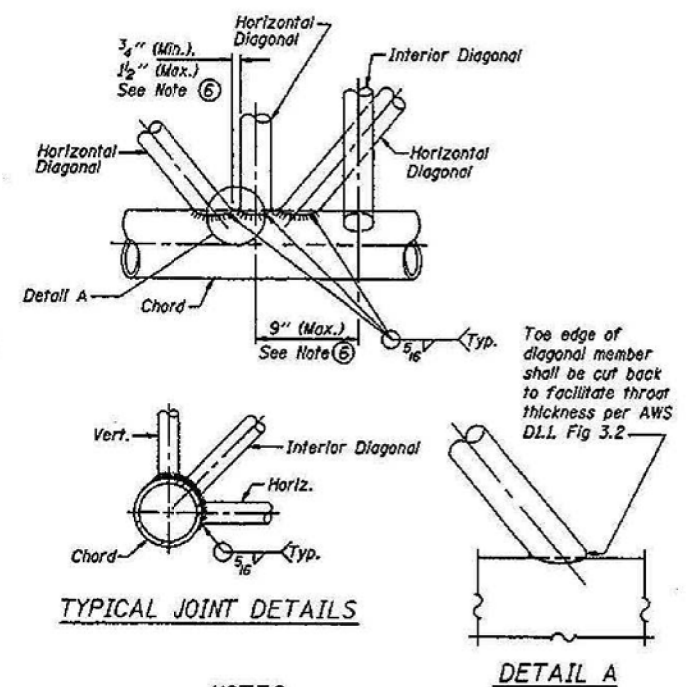
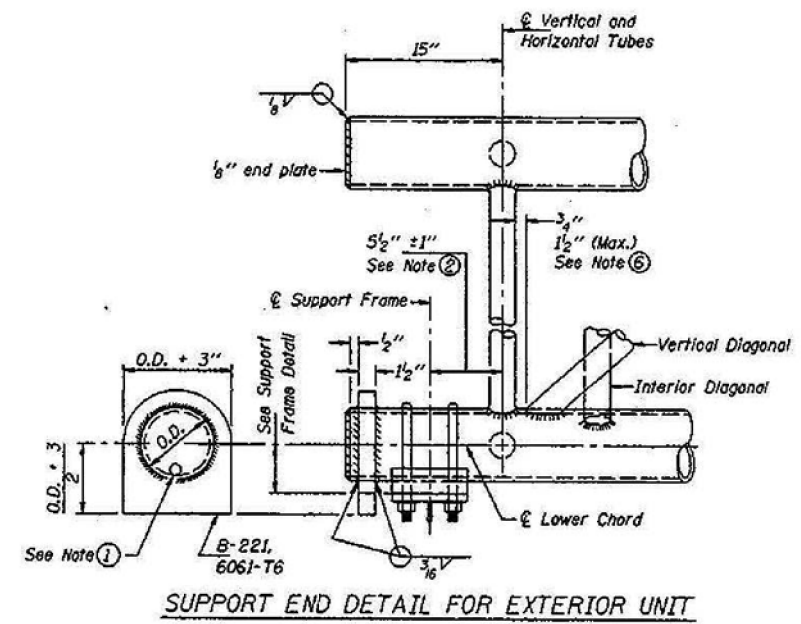
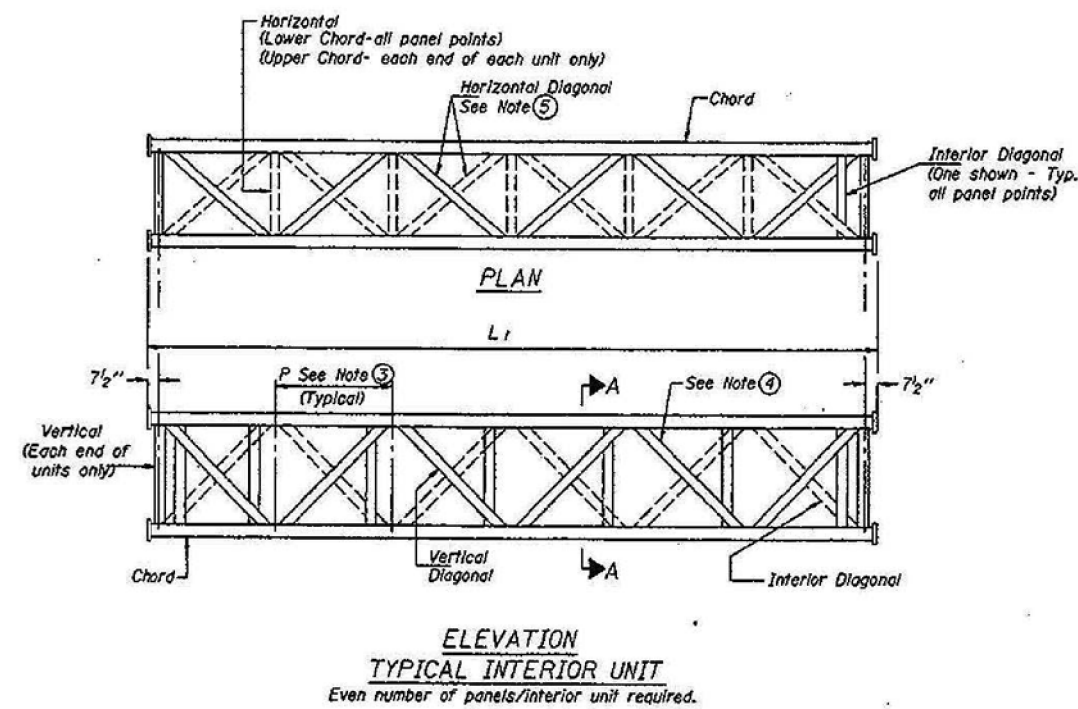
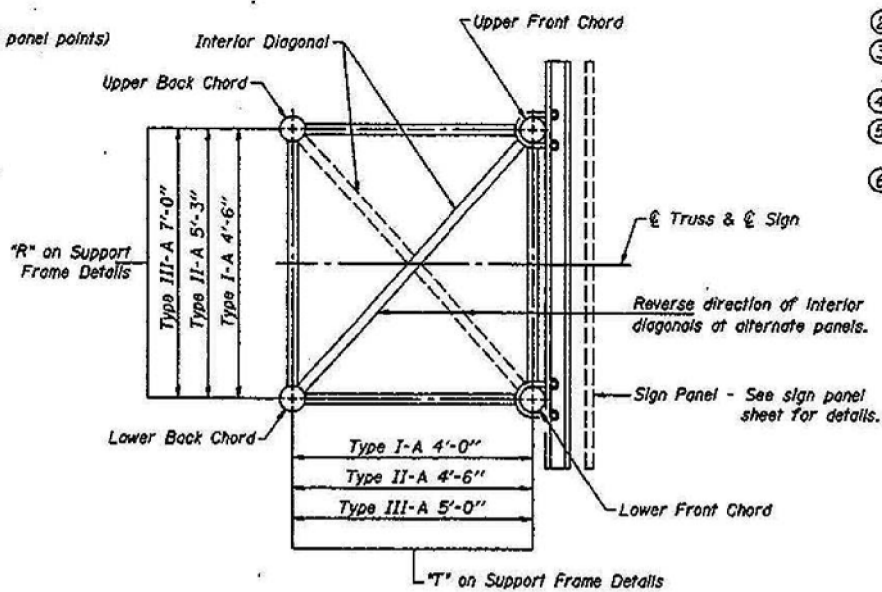
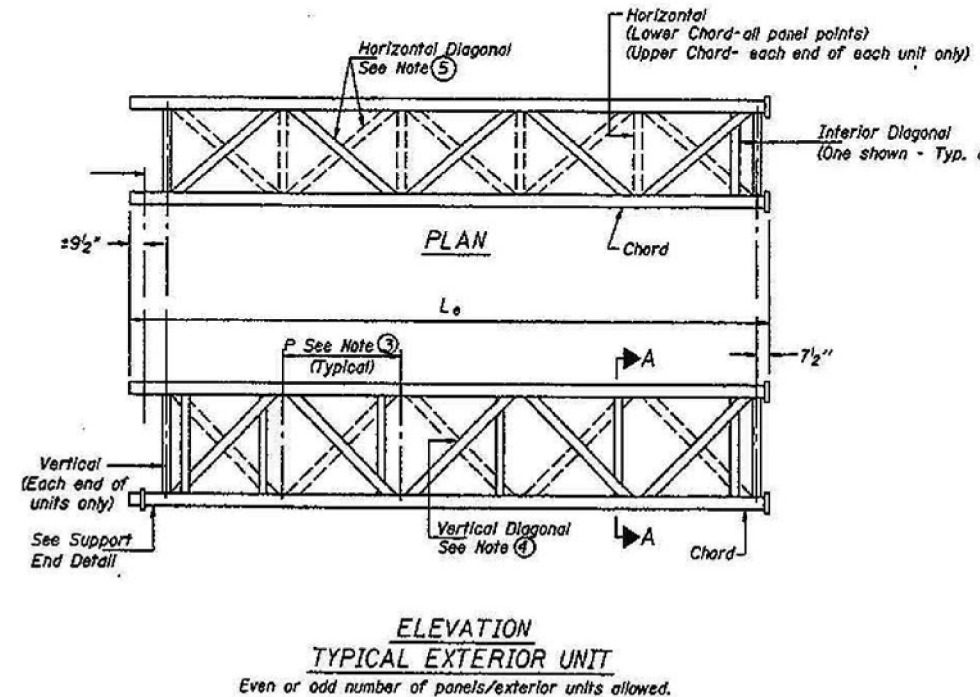


FOR INFORMATION ONLY



- NOTES**
- Contractor may alternatively use standard aluminum drive-fit cap to close end. 1/2" diameter drain hole in end plate/drive-fit cap. (Typ. at ends of all chords)
 - 5 1/2" end dimension may vary by ±1" to provide uniform panel spacing (P).
 - Panel spacing (P) shall be uniform for entire truss and between 4'-0" and 5'-0" for Type I-A or 4'-0" and 5'-6" for Types II-A and III-A.
 - Vertical Diagonals in front and back face shall alternate.
 - Hidden lines show wind bracing alternates direction between planes of top and bottom chords.
 - All diagonals shall be detailed for minimum offset from the panel point based on the following: Offset shall be such as to provide a 3/4" minimum to 1 1/2" maximum clearance between any diagonal and any horizontal or vertical member, and to provide clearance for U-bolt connections of signs or walkway-brackets.



DESIGNED	TCG
CHECKED	AJN
DRAWN	ABW
CHECKED	TCG

OS-A-2 7/1/2001

NUMBER	REVISION	DATE

ITS SHEET 28 OF 98

**OVERHEAD SIGN STRUCTURES
ALUMINUM TRUSS DETAILS
FOR TRUSS TYPES I-A, II-A and III-A**

ILLINOIS DEPARTMENT OF TRANSPORTATION
F.A.I. 74
D4 I-74 ITS SYSTEM-1
PEORIA & TAZEWELL COUNTIES

10/14/02

EDWARDS AND KELCEY