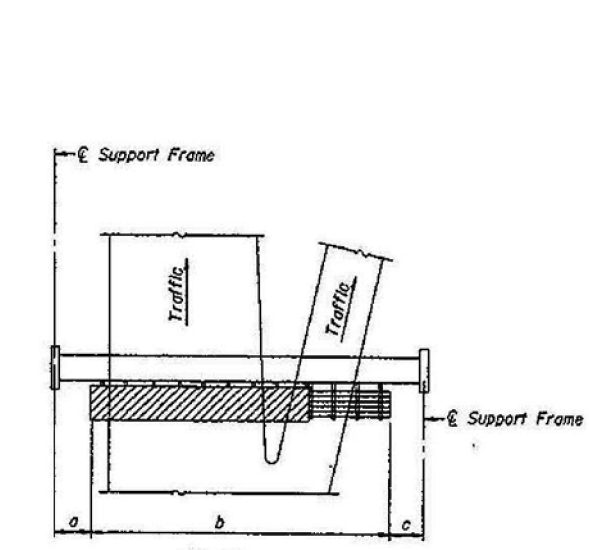


FOR INFORMATION ONLY



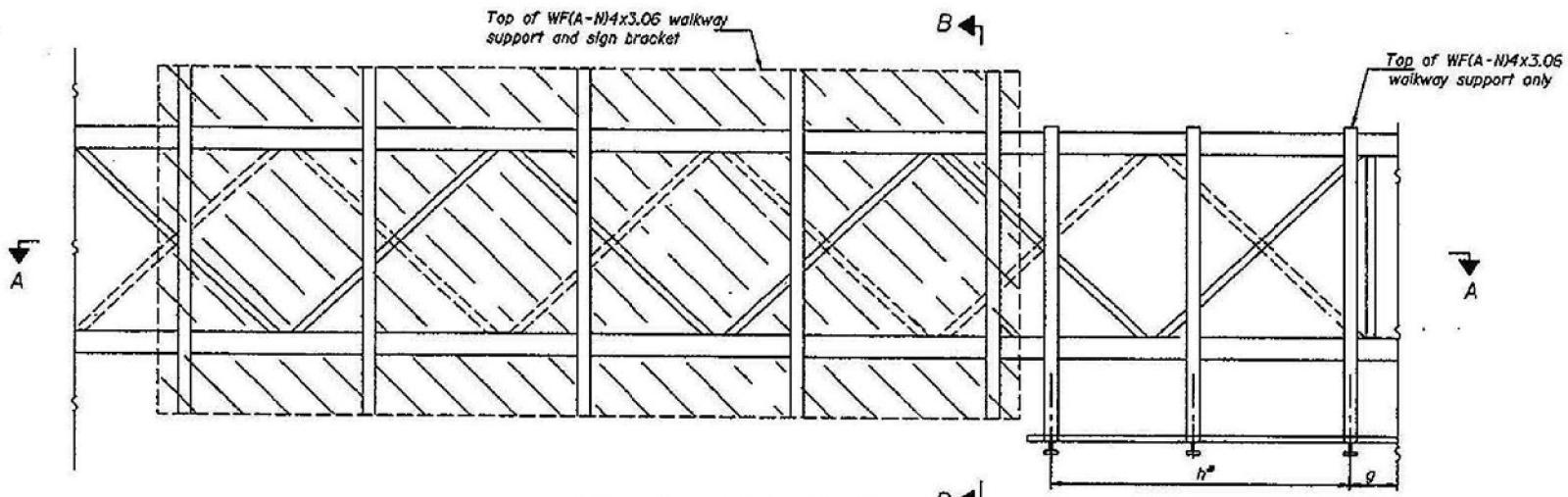
PLAN  
WALKWAY AND HANDRAIL SKETCH  
(Road plan beneath truss varies)

**BRACKET TABLE**

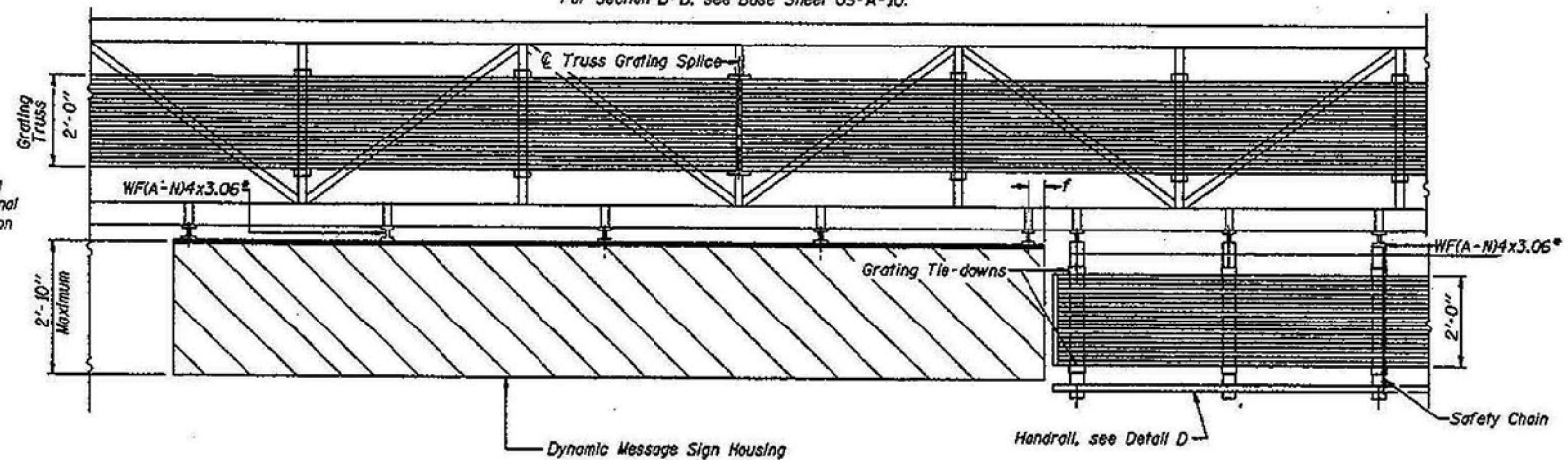
WF(A)-N4x3.06  
ASTM B308, Alloy 6061-T6

Sign Width		Number Brackets Required
Greater Than	Less Than or Equal To	
10'-0"	10'-0"	2
16'-0"	16'-0"	3
22'-0"	22'-0"	4
28'-0"	28'-0"	5
28'-0"	34'-0"	6

Walkway and Truss Grating width dimensions are nominal and may vary ±1/2" based on available standard widths.



TYPICAL FRONT ELEVATION  
With handrail omitted for clarity.  
For Section B-B, see Base Sheet OS-A-10.



SECTION A-A

Handrail and walkway shall span a minimum of three brackets between splices and/or gap joints. Place all sign and walkway brackets as close to panel points as practical. Grating and handrail splices placed as needed.

Truss grating to facilitate inspection shall run full length (center to center of support frames) ±12" on overhead trusses. Cost of truss grating is included in "Overhead Sign Structure".

Notes: \*Space walkway brackets WF(A)-N4x3.06 and sign brackets WF(A)-N4x3.06 for efficiency and within limits shown:  
f = 12" maximum, 4" minimum (End of sign to center of nearest bracket)  
g = 12" maximum, 4" minimum (End of walkway grating to center of nearest support bracket)  
h = 6'-0" maximum (center to center of sign and/or walkway support brackets, WF(A)-N4xL79 or WF(A)-N4x3.06)  
\*\*If walkway bracket at safety chain location is behind sign, add angle to bracket, see Alternate Safety Chain Attachment on Base Sheet OS-A-11.

For Details T and W, Section B-B and Grating Splice Details, see Base Sheet OS-A-10.  
For Details D, F, G and P and Handrail Splice Details, see Base Sheet OS-A-11.

Structure Number	Station	a	b	c	Walkway Grating and Handrail Lengths
450901074R10L3	495+00	24'-9 1/2"	59'-2 1/2"	0	30'-9 1/2"
456721074L063.5	168+25	24'-9 1/2"	49'-2 1/2"	0	21'-9 1/2"

DESIGNED	TCG
CHECKED	AJN
DRAWN	ABW
CHECKED	TCG

NUMBER	REVISION	DATE

OS-A-9-DMS 7/1/2001

ITS SHEET 33 OF 98

**OVERHEAD SIGN STRUCTURES  
ALUMINUM WALKWAY DETAILS**

ILLINOIS DEPARTMENT OF TRANSPORTATION  
F.A.I. 74  
D4 I-74 ITS SYSTEM-1  
PEORIA & TAZEWELL COUNTIES

10/14/02

**EDWARDS AND KELCEY**