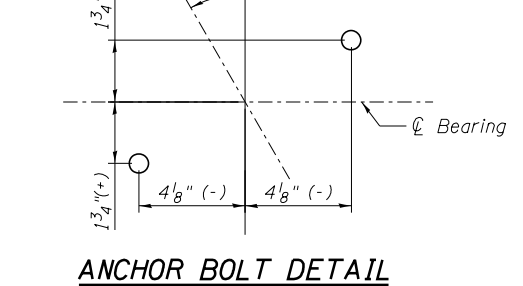


**SEC. THRU ABUT.**  
**BILL OF MATERIAL**

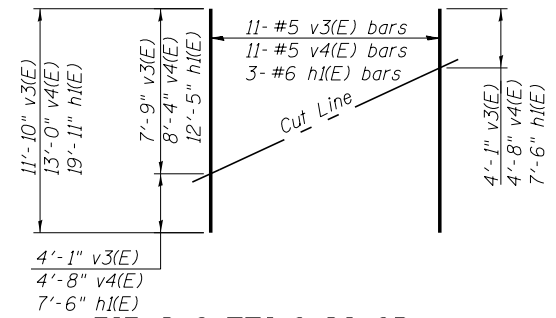
Bar	No.	Size	Length	Shape
h(E)	42	#6	12'-5"	—
h1(E)	6	#6	19'-11"	—
h2(E)	4	#6	10'-2"	—
p(E)	8	#7	36'-11"	—
p1(E)	8	#5	20'-1"	—
p2(E)	4	#5	21'-8"	—
s2(E)	32	#5	13'-3"	□
s3(E)	2	#5	13'-11"	□
s4(E)	64	#5	4'-4"	□
s5(E)	8	#5	4'-8"	□
s6(E)	23	#5	6'-10"	□
s7(E)	4	#5	9'-2"	□
u(E)	8	#6	10'-10"	┘
v1(E)	38	#8	6'-6"	—
v2(E)	38	#8	7'-7"	—
v3(E)	11	#5	11'-10"	—
v4(E)	11	#5	13'-0"	—
Concrete Structures		Cu. Yd.	22.7	
Reinforcement Bars, Epoxy Coated		Pound	4,740	
Furnishing Steel Piles HP12x53		Foot	534	
Driving Piles		Foot	534	
Test Pile Steel HP12x53		Each	1	

Bars indicated thus 4x2-#5 etc. indicates 4 lines of bars with 2 lengths per line.

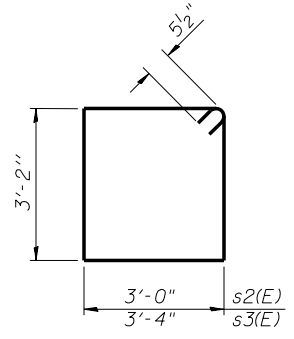
- NOTES:**
- For details of piles, see sheet SA30.
  - Pour steps monolithically with cap.
  - Adjust s7(E) bars in field to form a single closed stirrup between the s2(E) bar and the s3(E) bar.
  - h1(E) or h2(E) bars shall not be embedded in the approach slab.
  - Adjust bar spacing to avoid anchor bolt locations.



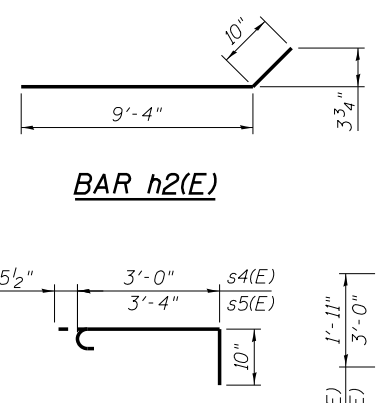
**MIN. BAR LAP**  
#5 bar = 3'-3"



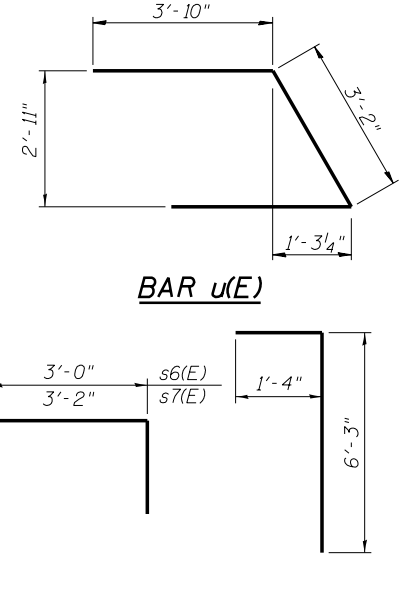
**FIELD CUTTING DIAGRAM**  
Order v3(E), v4(E) and h1(E) full length. Cut as shown and use remainder of bars in opposite face.



**BARS s2(E) & s3(E)**



**BARS s4(E) & s5(E)**



**BARS s6(E) & s7(E) BAR v2(E)**

**benesch**  
engineers · scientists · planners

Alfred Benesch & Company  
205 North Michigan Avenue, Suite 2400  
Chicago, Illinois 60601  
312-565-0450 Job No. 10056

FILE NAME =	USER NAME = mbecker	DESIGNED - DTS	REVISIONS -
0900165.68620.25.abut2.dgn		CHECKED - SLD	REVISIONS -
		PLOT SCALE =	REVISIONS -
		PLOT DATE = 7/16/2012	REVISIONS -

STATE OF ILLINOIS  
DEPARTMENT OF TRANSPORTATION

SB NORTH ABUTMENT DETAILS  
STRUCTURE NO. 090-0165 / 0166  
SHEET NO. SA25 OF SA47 SHEETS

F.A.I. R.T.E.	SECTION	COUNTY	TOTAL SHEETS	SHEET NO.
74	90-[14R]14HB-4,14,14HB[BR]	TAZEWELL	2433	1889
				CONTRACT NO. 68620
ILLINOIS FED. AID PROJECT				

x:\10000s\10056\engineer\ing-documents\phase-1\1155over\74\final\0900165.68620.25.abut2.dgn 10:53:25 AM 7/16/2012