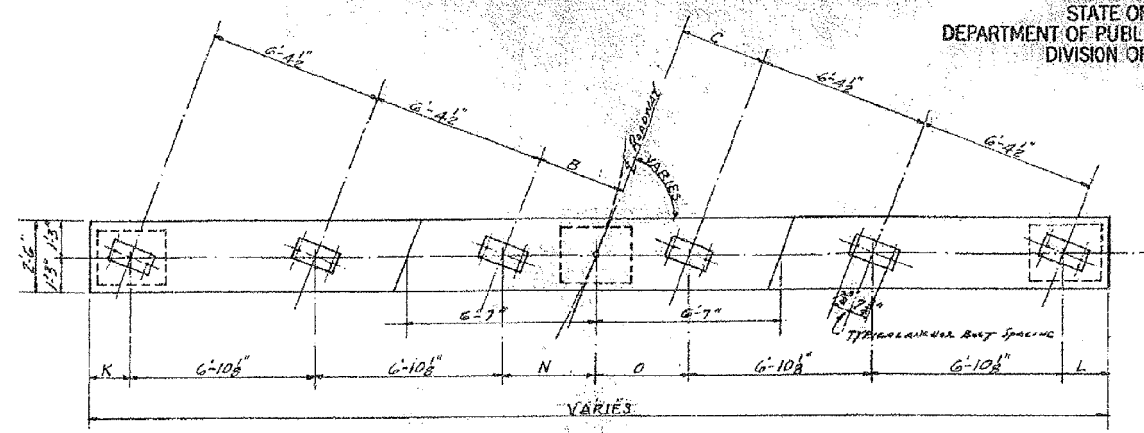
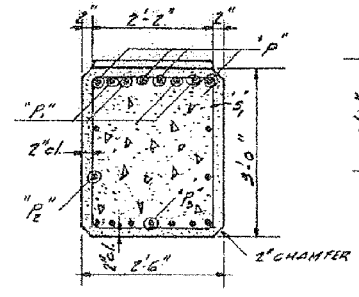


STATE OF ILLINOIS
DEPARTMENT OF PUBLIC WORKS & BUILDINGS
DIVISION OF HIGHWAYS

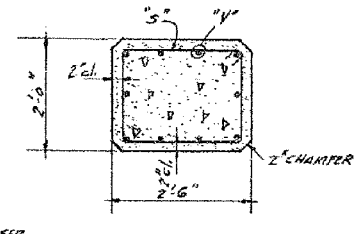
ROUTE No.	SEC.	COUNTY	STATION	SHEET
F.A. 74	90-144B	TAZEWELL	89	33
FED. ROAD DIST. No. 7		ILLINOIS		



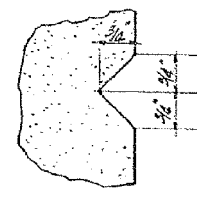
TOP PLAN NOTE: SEE SH. NO. 32 FOR VARIABLE DIMENSIONS



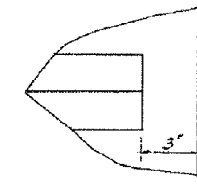
SECTION A-A



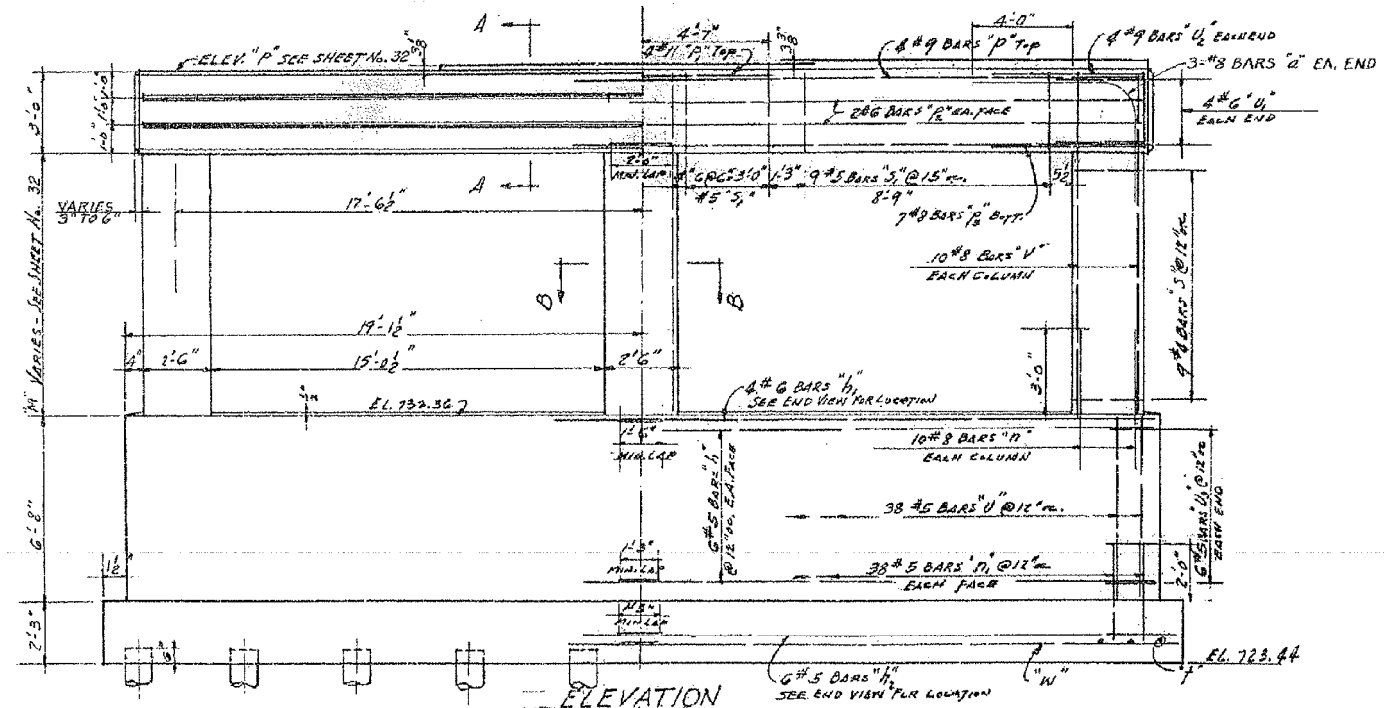
SECTION B-B



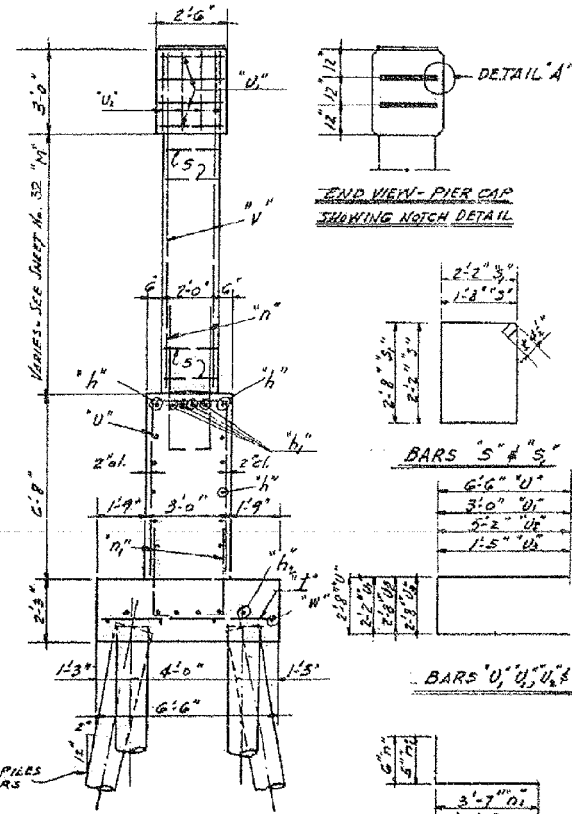
NOTCH DETAIL



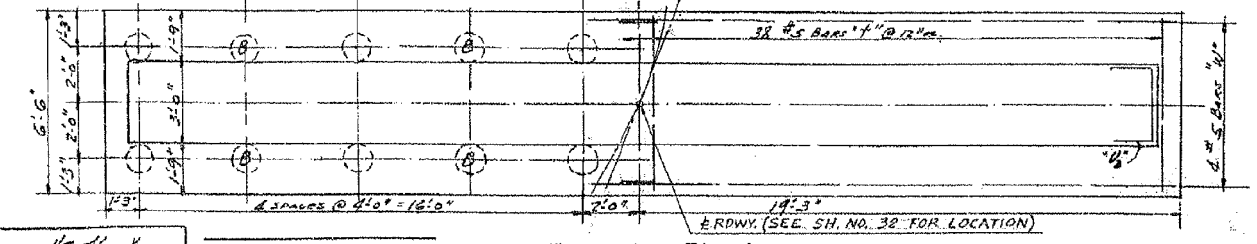
DETAIL A



ELEVATION



END VIEW



FOOTING PLAN

BILL OF MATERIAL G PIERS

BAR	NO.	SIZE	LENGTH	SHAPE
a	36	#8	11'-6"	
b	184	#5	19'-9"	
b1	48	#6	19'-9"	
b2	72	#5	20'-0"	
n	180	#8	5'-6"	
n1	456	#5	4'-0"	
p	24	#9	30'-3"	
p1	24	#11	9'-0"	
p2	48	#6	14'-9"	
p3	24	#8	20'-3"	
s	162	#4	3'-8"	
s1	192	#5	10'-5"	
t	228	#5	6'-0"	
u	228	#5	15'-8"	
u1	48	#6	8'-3"	
u2	48	#9	15'-0"	
u3	72	#5	5'-6"	
v	180	#8	11'-0"	
w	48	#5	20'-0"	
ALL CONCRETE 395.3 CYRS				
REINFORCEMENT BARS 38,750 LBS				
CEMENT 192 CUMYD				
CREOSOTED PILES 3000 LBS				
TEST PILES (Timber) 2 EA.				

PIERS

F.A.I. ROUTE 74 - SECTION 90-144B-4

F.A.I. ROUTE 74 OVER F.A. ROUTE 73
STATION 540+01.31

TAZEWELL COUNTY
WARREN AND VAN PRAAG, INC.
CONSULTING ENGINEERS - DECATUR, ILLINOIS

PILE DATA
TYPE GA SOTED
CAPACITY 20 TONS
ESTIMATED LENGTH 25 FT.
No. REQD. G PIERS 120 (2 Test Piers)

DESIGNED	H.S. Kaufmann	EXAMINED	
CHECKED	H.Y.F.	ENGINEER OF BRIDGES AND TRAFFIC STRUCTURES	
DRAWN	H.E.R.	PASSED	
CHECKED	H.Y.F.	OFFICIAL OF DESIGN	
		APPROVED	
		CHIEF HIGHWAY ENGINEER	

FOR INFORMATION ONLY

benesch
engineers · scientists · planners
Alfred Benesch & Company
205 North Michigan Avenue, Suite 2400
Chicago, Illinois 60601
312-565-0450 Job No. 10056

FILE NAME =	USER NAME = mbecker	DESIGNED - MFB	REVISED -
0900165.68620.41.exist4.dgn		CHECKED - MRB	REVISED -
		DRAWN - PRT	REVISED -
		CHECKED - MRB	REVISED -

STATE OF ILLINOIS
DEPARTMENT OF TRANSPORTATION

EXISTING PLANS
STRUCTURE NO. 090-0165 / 0166

SHEET NO. SA41 OF SA47 SHEETS

F.A.I. RTE.	SECTION	COUNTY	TOTAL SHEETS	SHEET NO.
74	90-144R(144B-4,14,14HV8)BR	TAZEWELL	2433	1905
			CONTRACT NO. 68620	
ILLINOIS FED. AID PROJECT				

10:55:02 AM x:\10000s\10056\engineer\ing-documents\phase-1\155over-174\final\0900165.68620.41.exist4.dgn 7/16/2012