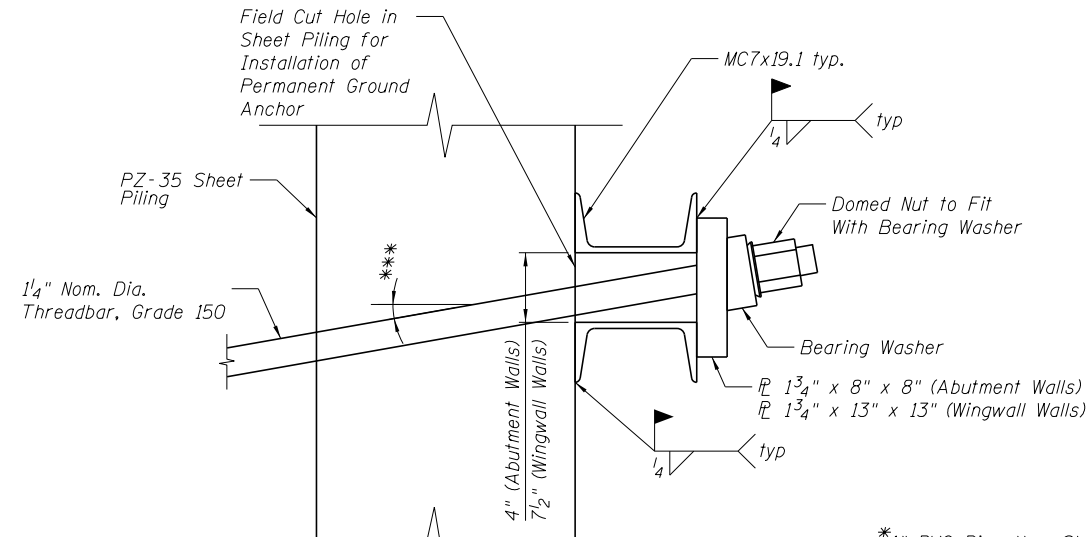


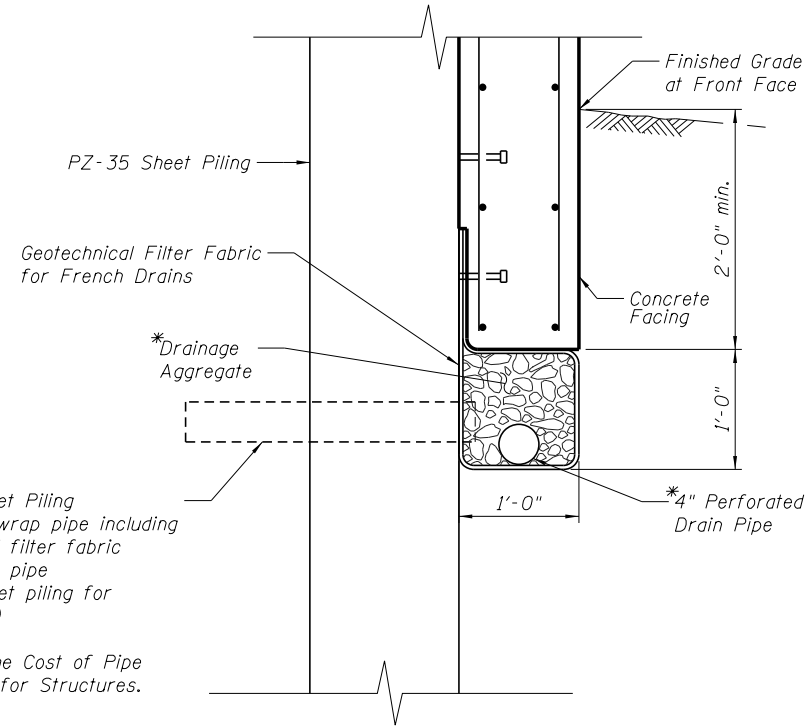
**TWO WALLS
BILL OF MATERIAL**

Bar	No.	Size	Length	Shape
h40(E)	444	#5	36'-9"	
h41(E)	8	#5	25'-9"	
h42(E)	4	#5	21'-7"	
h43(E)	16	#5	12'-3"	
h44(E)	12	#5	23'-2"	
h45(E)	7	#5	19'-8"	
h46(E)	68	#5	36'-0"	
h47(E)	16	#5	33'-0"	
h48(E)	24	#5	26'-9"	
h49(E)	7	#5	37'-8"	
h50(E)	4	#5	48'-2"	
h51(E)	12	#5	21'-1"	
h52(E)	7	#5	18'-1"	
h53(E)	4	#5	40'-3"	
h54(E)	6	#5	34'-0"	
t40(E)	832	#5	6'-11"	
t41(E)	16	#5	5'-5"	
t42(E)	160	#5	8'-11"	
t43(E)	44	#5	6'-5"	
v40(E)	966	#5	10'-6"	
v41(E)	400	#5	8'-6"	
v42(E)	9	#5	4'-4"	
v43(E)	21	#5	21'-7"	
v44(E)	26	#5	11'-8"	
v45(E)	83	#5	10'-0"	
v46(E)	17	#5	6'-11"	
v47(E)	20	#5	20'-9"	
v48(E)	8	#5	4'-0"	
v49(E)	29	#5	12'-10"	
Concrete Structures		Cu. Yd.	625.8	
Form Liner Textured Surface		Sq. Ft.	8,943	
Stud Shear Connectors		Each	2,398	
Reinforcement Bars, Epoxy Coated		Pound	47,670	
Concrete Sealer		Sq. Ft.	10,362	
Permanent Ground Anchor		Each	86	
Permanent Steel Sheet Piling		Sq. Ft.	24,711	



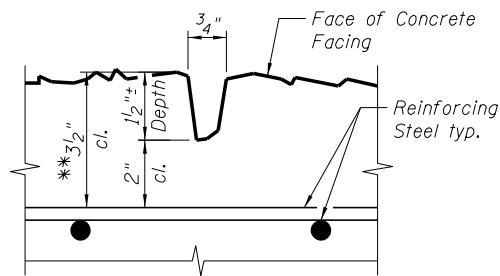
SECTION AT ANCHOR CONNECTION

*** See Anchor and Waler Schedule on sheet SB45.

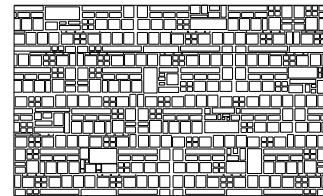


SECTION SHOWING UNDERDRAIN

*Include in the Cost of Pipe Underdrains for Structures.



ASHLAR STONE RUSTICATION DETAIL

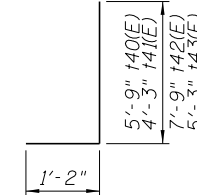


ASHLAR STONE RUSTICATION ARCHITECTURAL TREATMENT

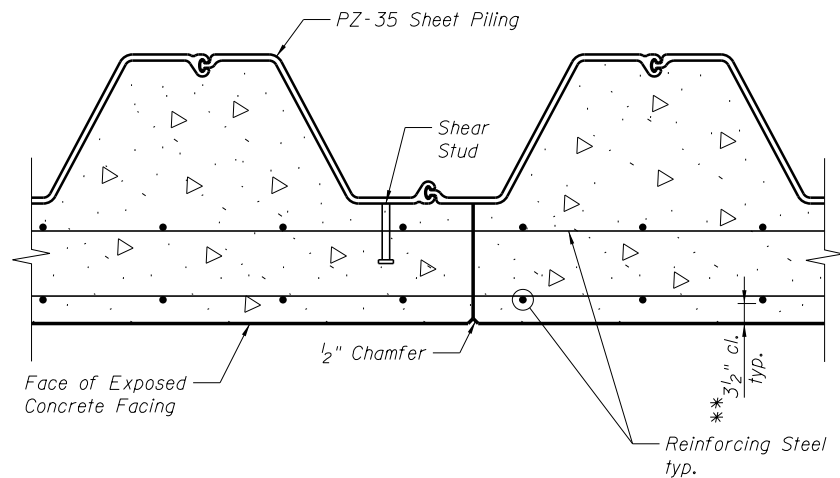
Note: Architectural treatment is to be applied to the entire surface of the concrete facing. Cost shall be included with Form Liner Textured Surface. See Special Provision for "Rustication Finish for Retaining Walls". The form liner shall be Ashlar Stone Pattern equal to Scott Systems Texture #167C.

NOTE:

All drainage system components shall extend to 2'-0" from the end of each wingwall except an outlet pipe shall extend until intersecting with the side slopes. The pipes shall drain into concrete headwalls (See Article 601.05 of the Standard Specifications and Highway Standard 601101).

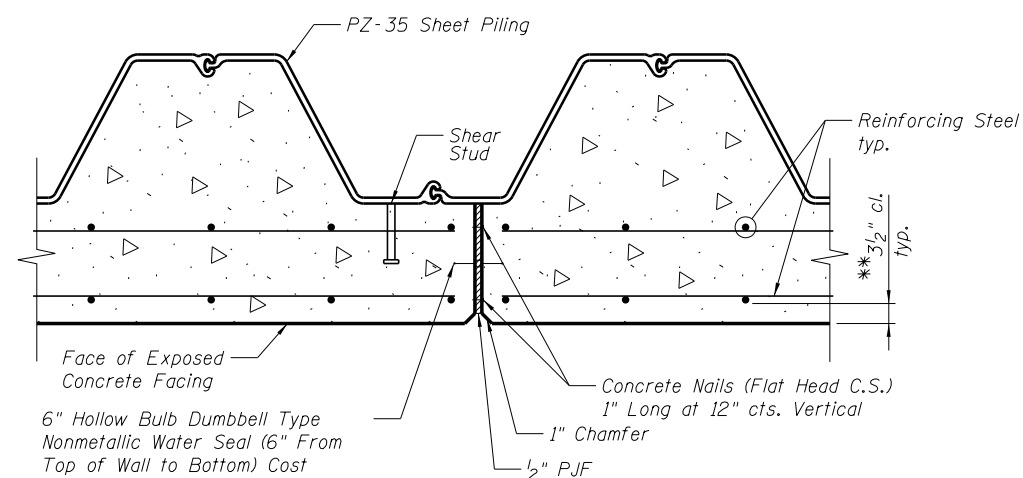


BARS t40(E), t41(E), t42(E) & t43(E)

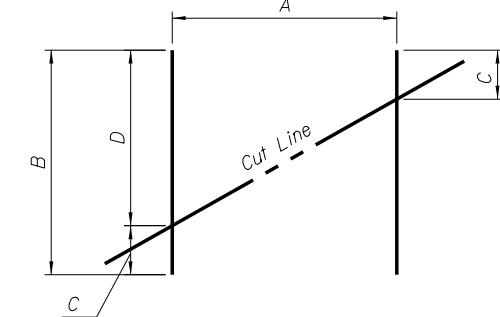


CONSTRUCTION JOINT

***Provide 3 1/2" clear to face of concrete facing (includes 1/2" depth of rustication).



EXPANSION JOINT



FIELD CUTTING DIAGRAM

Order bars in table below Full Length. Cut as Shown and Use Remainder of Bars in Opposite Face.

Bar	A	B	C	D
h44(E)	12	23'-2"	3'-6"	19'-8"
h49(E)	7	37'-8"	3'-6"	34'-2"
h50(E)	4	48'-2"	8'-0"	40'-2"
h51(E)	12	21'-1"	3'-0"	18'-1"
h53(E)	4	40'-3"	4'-6"	35'-9"
h54(E)	6	34'-0"	3'-0"	31'-0"
v43(E)	21	21'-7"	4'-7"	17'-0"
v44(E)	26	11'-8"	1'-8"	10'-0"
v46(E)	17	6'-11"	1'-8"	5'-3"
v47(E)	20	20'-9"	4'-1"	16'-8"
v49(E)	29	12'-10"	1'-7"	11'-3"



Alfred Benesch & Company
205 North Michigan Avenue, Suite 2400
Chicago, Illinois 60601
312-565-0450 Job No. 10056

FILE NAME = 0900167.68620.51.psh7.dgn

USER NAME = mbecker	DESIGNED - JJC/AMB	REVISIONS
CHECKED - LRB/MFB	CHECKED - LRB/MFB	REVISIONS
PLOT SCALE =	DRAWN - CBS	REVISIONS
PLOT DATE = 7/16/2012	CHECKED - MFB	REVISIONS

STATE OF ILLINOIS
DEPARTMENT OF TRANSPORTATION

ABUTMENT WALL DETAILS 2 OF 2
STRUCTURE NO. 090-0167

SHEET NO. SB51 OF SB65 SHEETS

F.A.I. R.T.E.	SECTION	COUNTY	TOTAL SHEETS	SHEET NO.
74	90-[14R]14HB-4,14,14HV[B]R	TAZEWELL	2433	1962
CONTRACT NO. 68620				
ILLINOIS FED. AID PROJECT				

x:\10000s\10056\engineer\ing.-documents-phase-1\174over\Jefferson\Final\0900167.68620.51.psh7.dgn 11:08:58 AM 7/16/2012