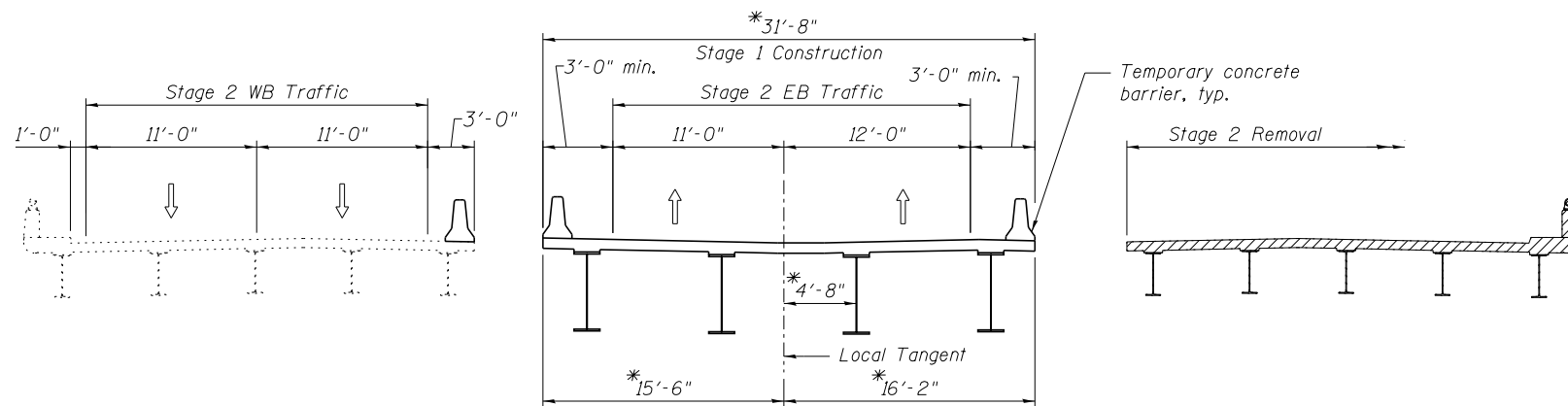
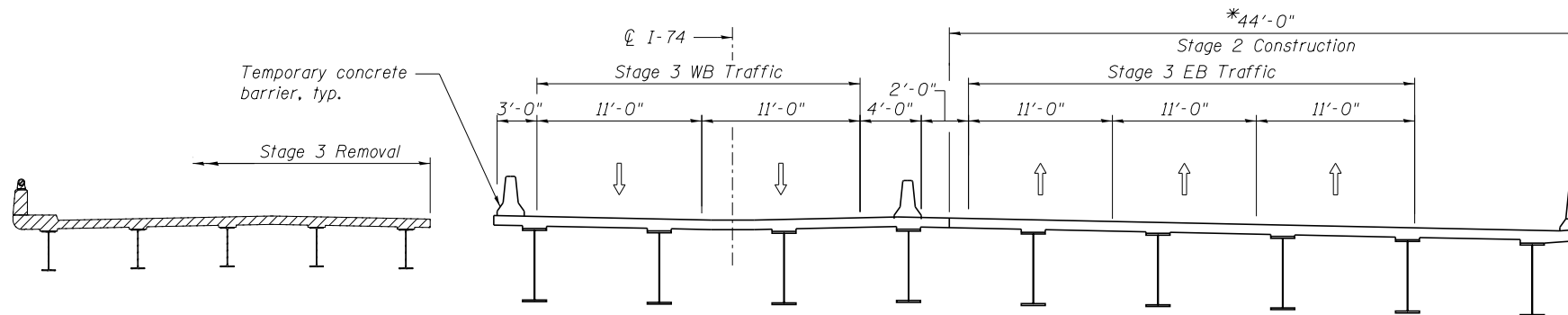


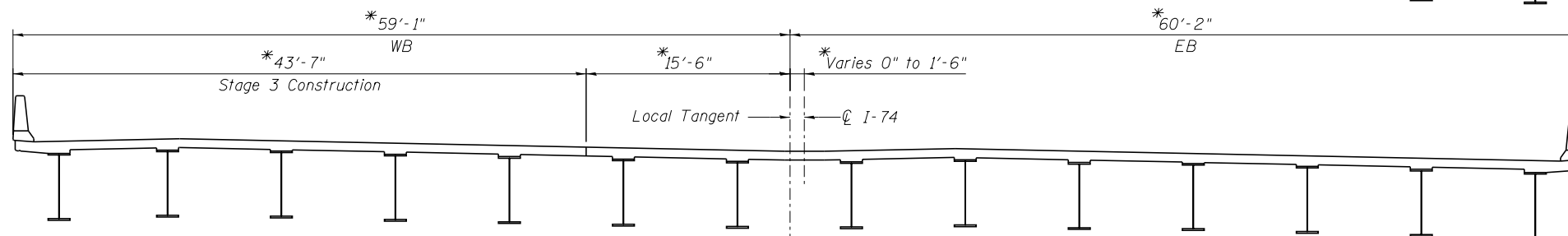
EXISTING STRUCTURE - STAGE 1 REMOVAL



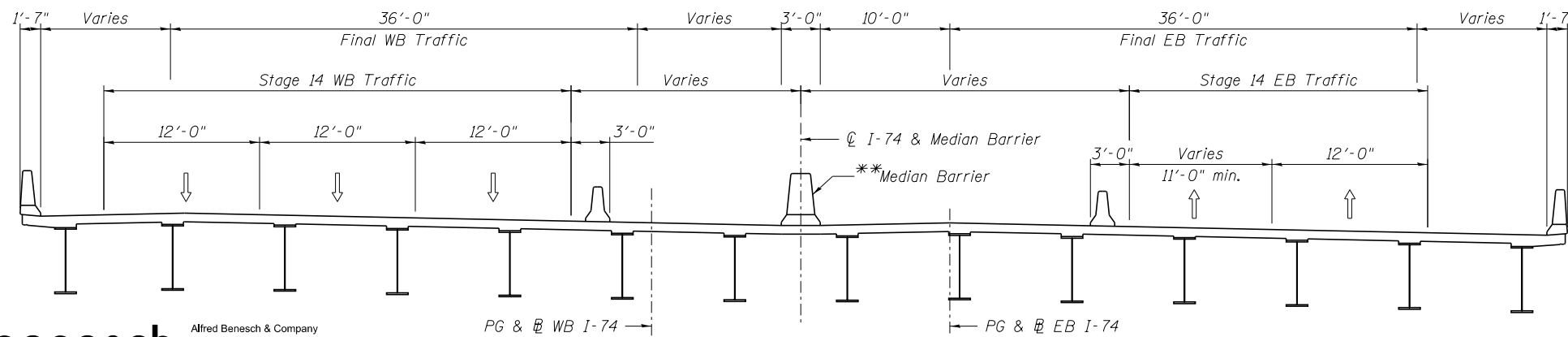
STAGE 1 CONSTRUCTION & STAGE 2 REMOVAL



STAGE 2 CONSTRUCTION & STAGE 3 REMOVAL



STAGE 3 CONSTRUCTION



STAGE 14 CONSTRUCTION & FINAL CROSS SECTION

*Dimension measured perpendicular to Local Tangent (Local Tangent to Sta. 569+01.02).

**Median Barrier to be constructed at the same time as the roadway barrier.

NOTES:

- All cross sections viewed in direction of increasing station.
- Temporary Concrete Barrier shall be utilized at various locations between Stage 3 and 14 to provide roadway separation between WB and EB traffic. See Maintenance of Traffic plans for location and quantity of Temporary Concrete Barrier.

benesch
engineers · scientists · planners
Alfred Benesch & Company
205 North Michigan Avenue, Suite 2400
Chicago, Illinois 60601
312-565-0450 Job No. 10056

FILE NAME = 0900169.68620.05.stg1.dgn

USER NAME = mbecker
DESIGNED - MFB
CHECKED - MRB
PLOT SCALE =
DRAWN - PRT
PLOT DATE = 7/16/2012

REVISIED -
REVISIED -
REVISIED -
REVISIED -

**STATE OF ILLINOIS
DEPARTMENT OF TRANSPORTATION**

**STAGE CONSTRUCTION DETAILS 1 OF 2
STRUCTURE NO. 090-0169**

SHEET NO. SC5 OF SC63 SHEETS

F.A.I. RTE.	SECTION	COUNTY	TOTAL SHEETS	SHEET NO.
74	90-[14R;14HB-4;14,14HVB]BR	TAZEWELL	2433	1981
CONTRACT NO. 68620				

ILLINOIS FED. AID PROJECT

x:\100000s\10056\engineer-ing-documents-phase-1\174over-Jackson\Final\0900169.68620.05.stg1.dgn

11:19:10 AM

7/16/2012