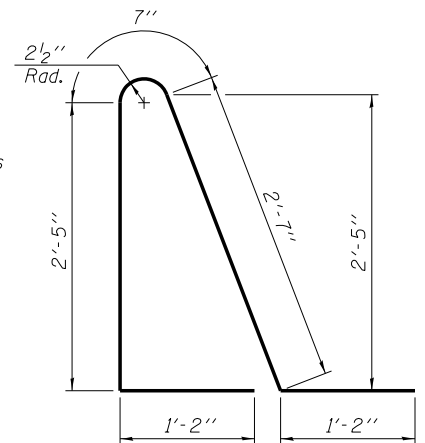


**NOTES:**

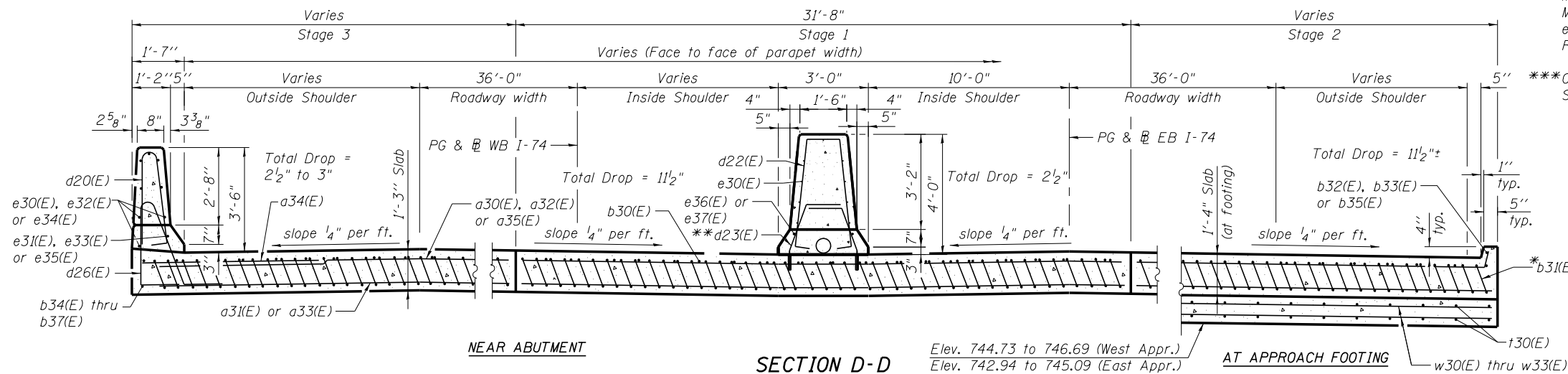
1. See sheet SC25 for View B-B, Detail J and View K-K.
2. Approach slab and parapet concrete shall be paid for as Concrete Superstructure.
3. Approach footing concrete shall be paid for as Concrete Structures.
4. Reinforcement shall be paid for as Reinforcement Bars, Epoxy Coated.
5. For d20(E), d22(E), d23(E) and v30(E) bar details, see sheet SC21.
6. The approach footing maximum applied service bearing pressure (Qmax) = 2.0 ksf.
7. For bar splicer details, see sheet SC44.
8. Cost of excavation for approach footing included with Concrete Structures.
9. For Granular Backfill and drainage treatment details, see sheet SC3.
10. For additional parapet and median barrier details, see sheets SC21 and SC22.

- \*Tilt #9 b31(E) bars as required to maintain clearance.
- \*\*Core and set #5 d23(E) bars according to Article 509.06 of the Standard Specifications. Cored holes shall be roughened or scored per manufacturer's recommendations. Maximum depth of hole shall not exceed 6". Cost to be included in Reinforcement Bars, Epoxy Coated.
- \*\*\*Cost included with Concrete Superstructure.



**TWO APPROACHES  
BILL OF MATERIAL**

Bar	No.	Size	Length	Shape
a30(E)	50	#4	36'-3"	
a31(E)	92	#5	36'-3"	
a32(E)	100	#4	27'-2"	
a33(E)	368	#5	27'-0"	
a34(E)	46	#6	6'-6"	
a35(E)	100	#4	26'-9"	
b30(E)	392	#4	16'-6"	
b31(E)	580	#9	30'-3"	
b32(E)	1	#4	14'-8"	
b33(E)	2	#4	14'-5"	
b34(E)	1	#4	12'-8"	
b35(E)	2	#4	15'-0"	
b36(E)	1	#4	15'-7"	
b37(E)	1	#4	13'-9"	
d20(E)	67	#5	6'-10"	
d22(E)	68	#5	9'-3"	
d23(E)	136	#5	3'-5"	
d26(E)	67	#5	7'-11"	
e30(E)	52	#4	14'-8"	
e31(E)	2	#8	14'-8"	
e32(E)	8	#4	14'-3"	
e33(E)	1	#8	14'-3"	
e34(E)	8	#4	13'-6"	
e35(E)	1	#8	13'-6"	
e36(E)	2	#8	29'-8"	
e37(E)	2	#8	29'-4"	
t30(E)	484	#4	11'-3"	
w30(E)	80	#5	36'-3"	
w31(E)	160	#5	26'-9"	
w32(E)	80	#5	24'-9"	
w33(E)	80	#5	26'-0"	
Concrete Superstructure		Cu. Yd.	360.5	
Concrete Structures		Cu. Yd.	83.3	
Reinforcement Bars, Epoxy Coated		Pound	77,920	

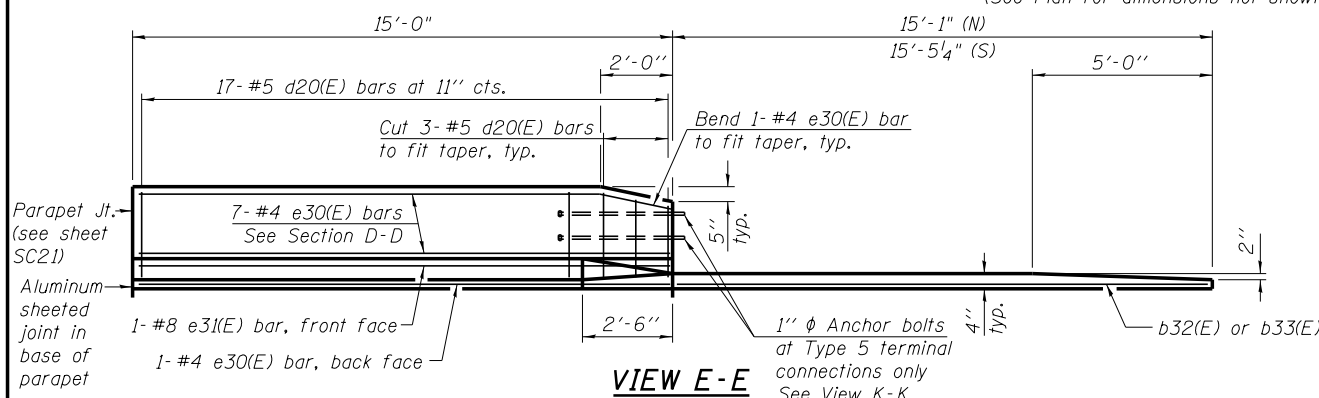


**NEAR ABUTMENT**

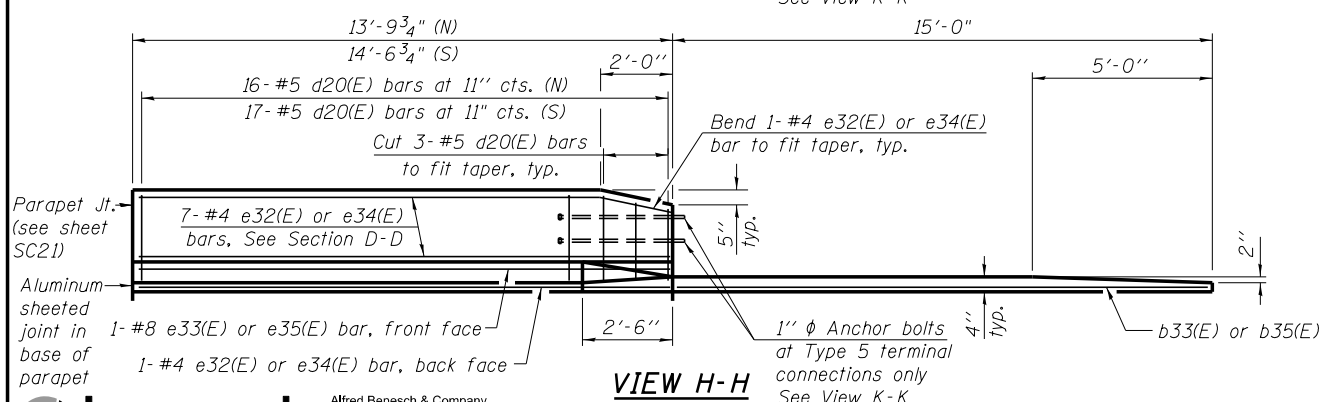
**SECTION D-D**

Elev. 744.73 to 746.69 (West Appr.)  
Elev. 742.94 to 745.09 (East Appr.)

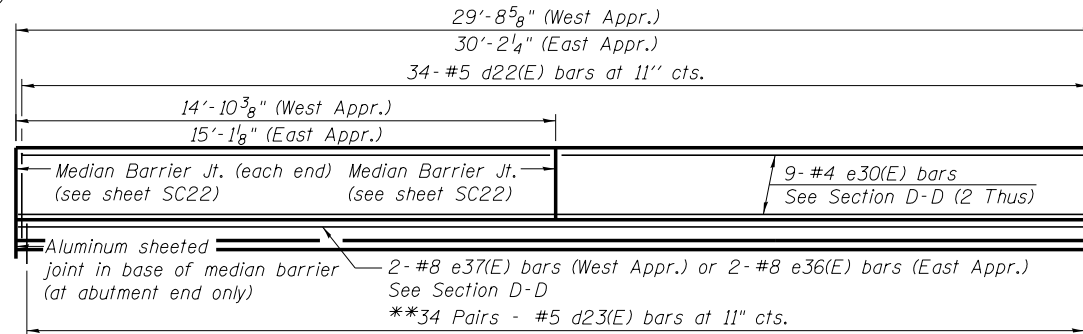
**AT APPROACH FOOTING**



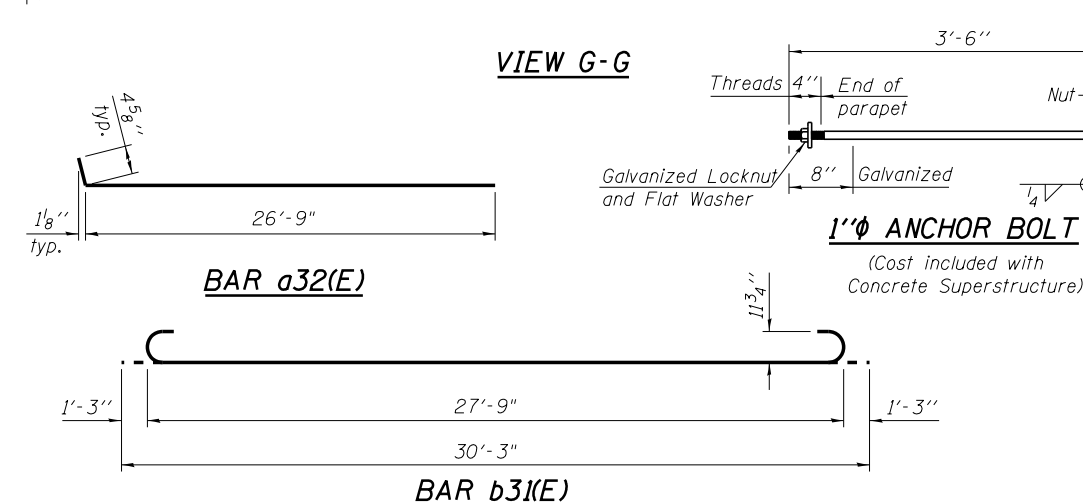
**VIEW E-E**



**VIEW H-H**



**VIEW G-G**



**BAR a32(E)**

**BAR b31(E)**

**1" ANCHOR BOLT**

(Cost included with Concrete Superstructure)

**benesch**  
engineers · scientists · planners  
Alfred Benesch & Company  
205 North Michigan Avenue, Suite 2400  
Chicago, Illinois 60601  
312-565-0450 Job No. 10056

FILE NAME =	USER NAME = mbecker	DESIGNED - MFB	REVISED -
0900169.68620.27.apslb3.dgn		CHECKED - AAY/MRB	REVISED -
		PLOT SCALE =	REVISED -
		PLOT DATE = 7/16/2012	REVISED -

**STATE OF ILLINOIS  
DEPARTMENT OF TRANSPORTATION**

**BRIDGE APPROACH SLAB DETAILS 3 OF 3  
STRUCTURE NO. 090-0169**

SHEET NO. SC27 OF SC63 SHEETS

F.A.I. RTE.	SECTION	COUNTY	TOTAL SHEETS	SHEET NO.
74	90-[14R]14HB-4,14,14HB[BR]	TAZEWELL	2433	2003
			CONTRACT NO. 68620	
ILLINOIS FED. AID PROJECT				

x:\10000s\10056\engineer\ing.-documents\phase-1\174over\Jackson\Final\0900169.68620.27.apslb3.dgn 11:19:31 AM 7/16/2012