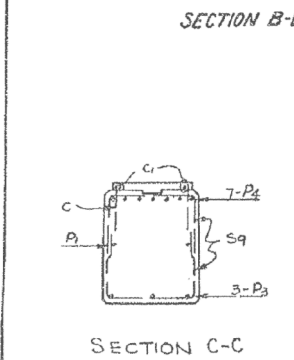
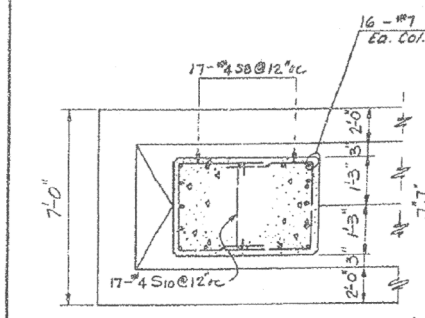


STATE OF ILLINOIS
DEPARTMENT OF PUBLIC WORKS & BUILDINGS
DIVISION OF HIGHWAYS

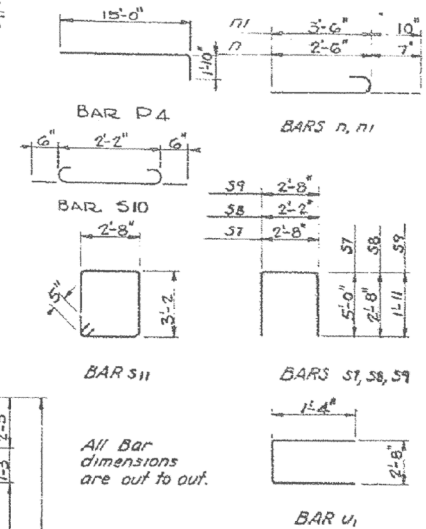
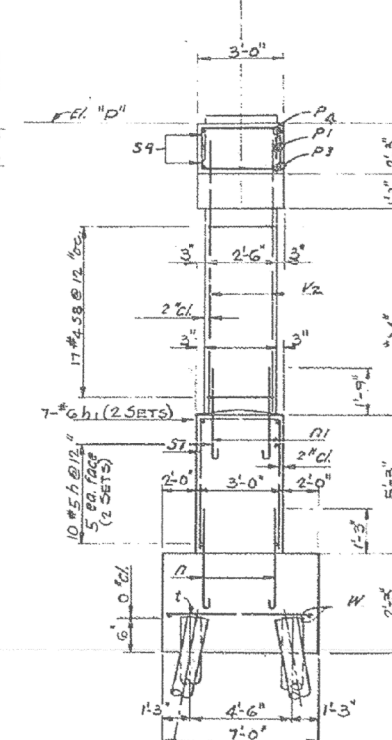
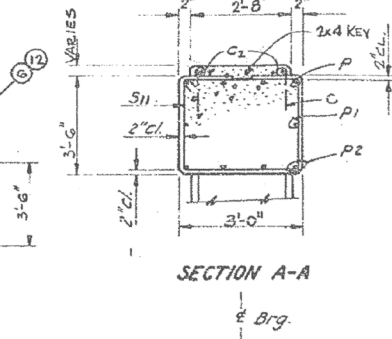
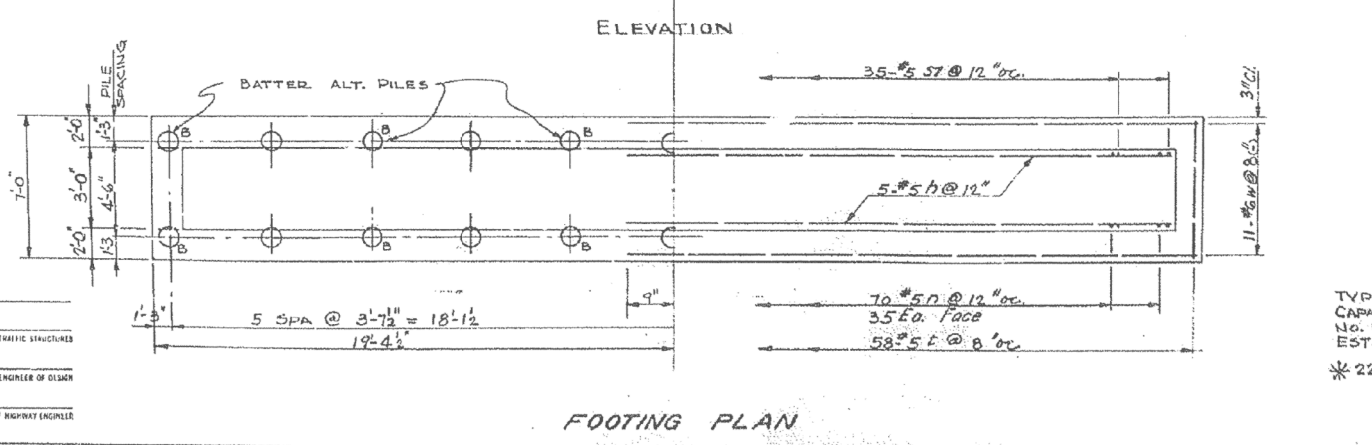
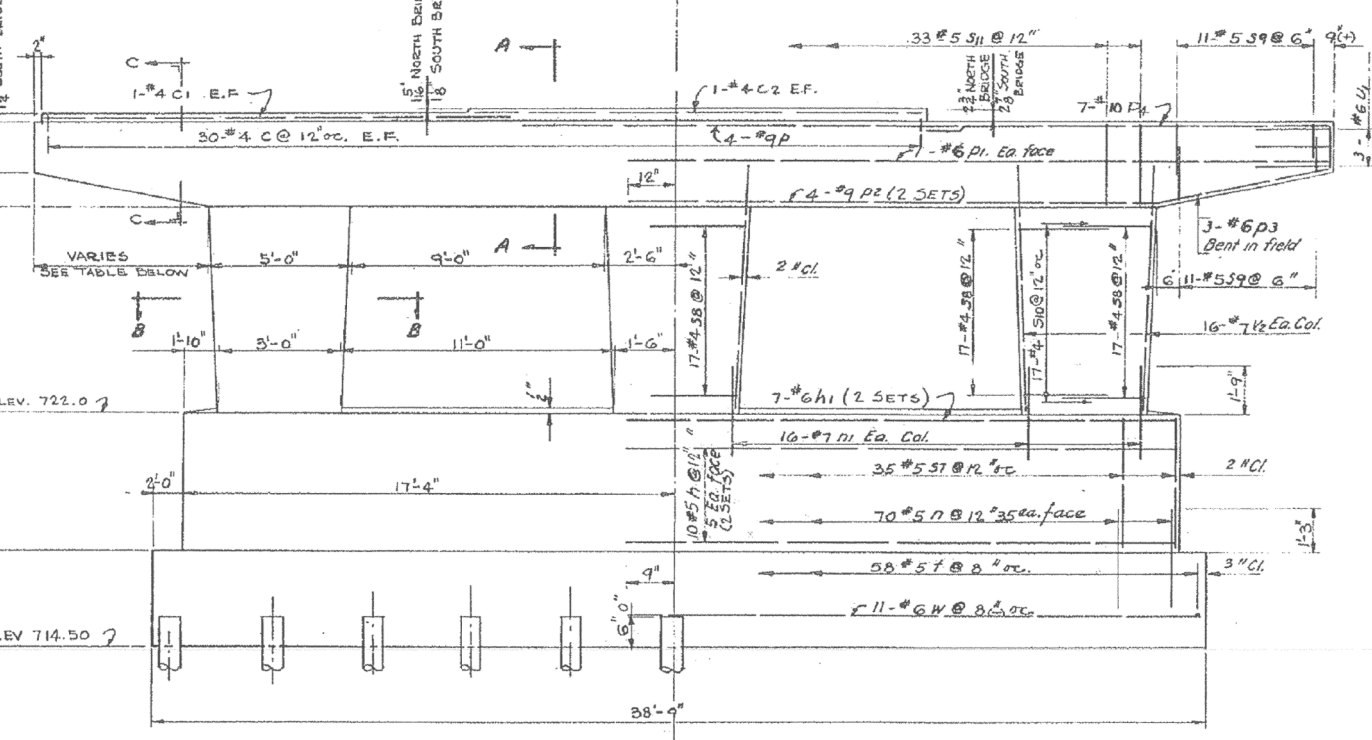
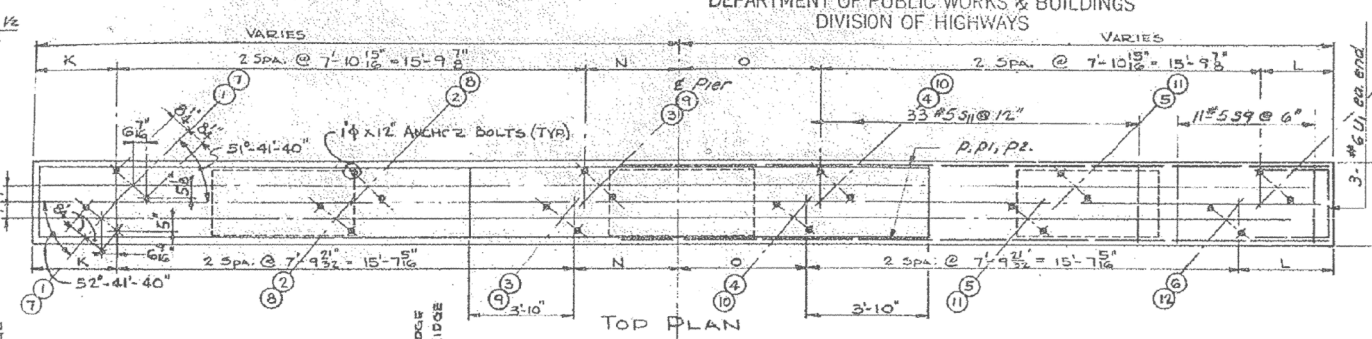
ROUTE No.	SEC.	COUNTY	STATION	SHEET
F.A.I. 90-14	HVB	TAZEWELL	24	13
R.T. 74				
FED. ROAD DIST. NO.		ILLINOIS		



CANTILEVER LENGTH

LOCATION	LENGTH
PIER #4 LEFT	6'-3 1/2"
" RIGHT	6'-3 3/4"
" LEFT	6'-4 3/8"
" RIGHT	6'-4 5/8"

DESIGNED	P. H. M.	ENGINEER OF BRIDGES AND TRAFFIC STRUCTURES
CHECKED	W. B. S.	ENGINEER OF DESIGN
DRAWN	P. H. M.	ENGINEER OF DESIGN
CHECKED	W. B. S.	CHIEF HIGHWAY ENGINEER



PIER #4
BILL OF MATERIALS (2 PIERS)

Bar	No.	Size	Length	Shape
C	120	#4	1'-6"	
H	40	#5	18'-0"	
H1	28	#6	18'-0"	
N	140	#5	3'-1"	
N1	46	#7	4'-4"	
C1	4	#4	17'-0"	
P	8	#9	19'-8"	
P1	8	#6	23'-5"	
P2	16	#7	17'-6"	
P3	12	#8	7'-8"	
EA	28	#10	16'-0"	
S11	66	#5	17'-6"	
S7	70	#5	12'-5"	
S8	204	#4	7'-8"	
S9	88	#5	6'-6"	
S10	102	#4	3'-2"	
T	116	#5	6'-6"	
C2	4	#4	15'-0"	
U1	12	#6	5'-4"	
V2	96	#7	18'-6"	
W	44	#6	19'-0"	

Class X Concrete cu. yd. 157.7
Reinforcement Bars lbs. 16,390
CLASS A EXCAVATION CUBS. 145
TIMBER PILES LIN. FT. 1100

PIER #4
F.A.I. ROUTE 74 SECTION 90-14 HVB
F.A.I. ROUTE 74 OVER I.T. R.R. & S.B.I. ROUTE 121
STATION 568 + 85.40
TAZEWELL COUNTY
WARREN AND VAN PRAAG, INC.
CONSULTING ENGINEERS - DECATUR, ILLINOIS

FOR INFORMATION ONLY

benesch
engineers · scientists · planners
Alfred Benesch & Company
205 North Michigan Avenue, Suite 2400
Chicago, Illinois 60601
312-565-0450 Job No. 10056

FILE NAME =	USER NAME = mbecker	DESIGNED - MFB	REVISED -
0900169.68620.56.exist7.dgn		CHECKED - MRB	REVISED -
		DRAWN - PRT/LLR	REVISED -
		CHECKED - MRB	REVISED -

STATE OF ILLINOIS
DEPARTMENT OF TRANSPORTATION

EXISTING PLANS
STRUCTURE NO. 090-0169
SHEET NO. SC56 OF SC63 SHEETS

F.A.I. RTE.	SECTION	COUNTY	TOTAL SHEETS	SHEET NO.
74	90-114R(14HB-4,14,14HVB)BR	TAZEWELL	2433	2032
				CONTRACT NO. 68620
				ILLINOIS FED. AID PROJECT

11:22:06 AM x:\10000s\10056\engineer\ing-documents\phase-1\174overJackson\Final\0900169.68620.56.exist7.dgn