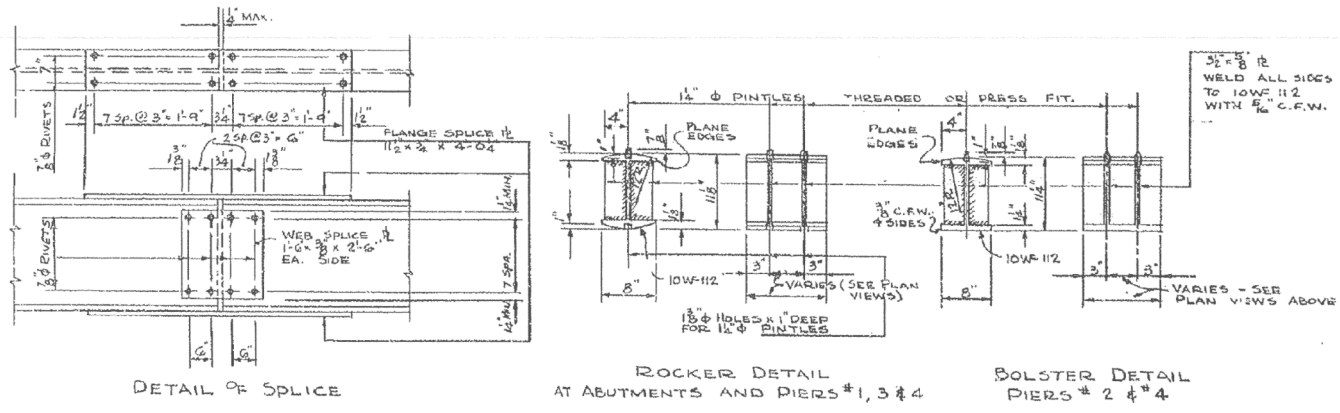
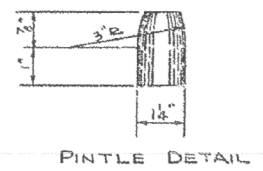
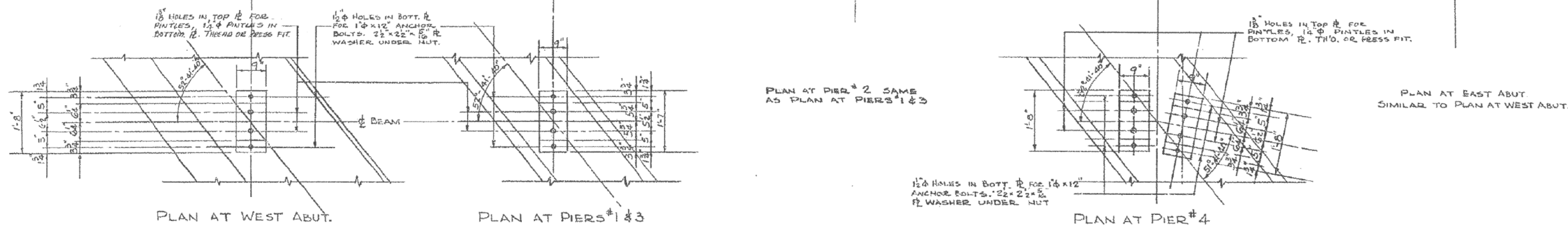
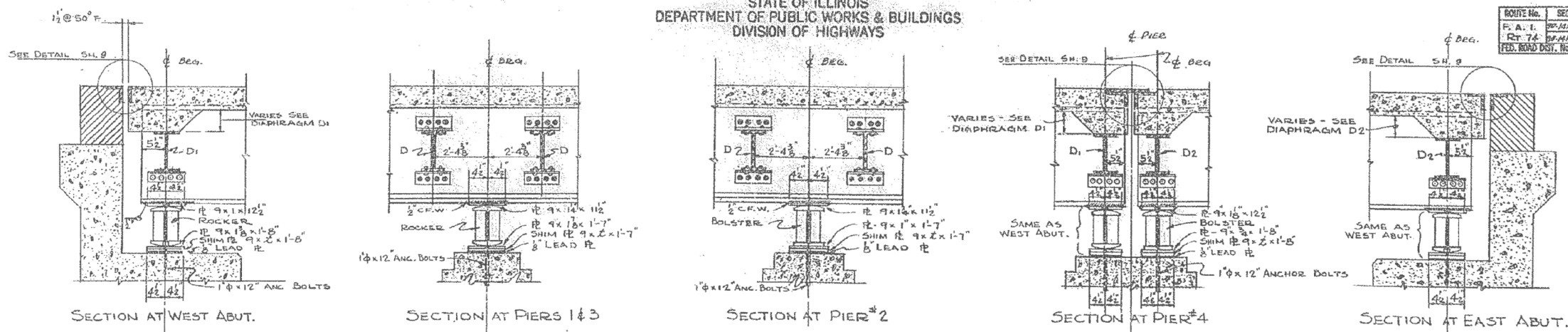


STATE OF ILLINOIS
DEPARTMENT OF PUBLIC WORKS & BUILDINGS
DIVISION OF HIGHWAYS

ROUTE No.	SEC.	COUNTY	SPAN	SHEET
F. A. I. RT. 74	90-14	TAZEWELL	24	17
FED. ROAD DIST. No. 7		ILLINOIS		PROJECT

SH. 11 OF 15



SHIM & THICKNESS (I)

BEAM No.	W. ABUT.	PIER #1	PIER #2	PIER #3	PIER #4		E. ABUT.
					(WEST)	(EAST)	
2	1 1/2"	1 1/2"	1 1/2"	1 1/2"	1 1/2"	1 1/2"	1"
3	1/2"	1/2"	1/2"	1/2"	1/2"	1/2"	1/2"
5	1 1/2"	1 1/2"	1 1/2"	1 1/2"	1 1/2"	1 1/2"	1 1/2"
8	1 1/2"	1 1/2"	1 1/2"	1 1/2"	1 1/2"	1 1/2"	1 1/2"
9	1/2"	1/2"	1/2"	1/2"	1/2"	1/2"	1/2"
11	1 1/2"	1 1/2"	1 1/2"	1 1/2"	1 1/2"	1 1/2"	1 1/2"

DESIGNED P.H.M.
CHECKED W.B.S.
DRAWN P.H.M.
CHECKED W.B.S.

EXAMINED
ROCKER OF BRIDGES AND TRAFFIC STRUCTURES
PASSED
ENGINEER OF DESIGN
APPROVED
SUPERVISOR ENGINEER

**SUPERSTRUCTURE
STRUCTURAL STEEL DETAILS**
F.A.I. ROUTE 74 SECTION 90-14 NVB
F.A.I. ROUTE 74 OVER I.T.R.R. & S.B.I. ROUTE 121
STATION 368 + 63.40
TAZEWELL COUNTY
WARREN AND VAN PRAAG, INC.
CONSULTING ENGINEERS - DECATUR, ILLINOIS

FOR INFORMATION ONLY

benesch
engineers · scientists · planners
Alfred Benesch & Company
205 North Michigan Avenue, Suite 2400
Chicago, Illinois 60601
312-565-0450 Job No. 10056

FILE NAME =	USER NAME = mbecker	DESIGNED - MFB	REVISED -
0900169.68620.60.exist11.dgn	PLOT SCALE =	CHECKED - MRB	REVISED -
	PLOT DATE = 7/16/2012	DRAWN - PRT/LLR	REVISED -
		CHECKED - MRB	REVISED -

STATE OF ILLINOIS
DEPARTMENT OF TRANSPORTATION

EXISTING PLANS
STRUCTURE NO. 090-0169
SHEET NO. SC60 OF SC63 SHEETS

F.A.I. R.T.	SECTION	COUNTY	TOTAL SHEETS	SHEET NO.
74	90-114R(14HB-4,14,14HVBI)BR	TAZEWELL	2433	2036
			CONTRACT NO. 68620	
		ILLINOIS	FED. AID PROJECT	

x:\10000s\10056\engineer\ing-documents\phase-1\174overJackson\Final\0900169.68620.60.exist11.dgn 11:23:00 AM 7/16/2012