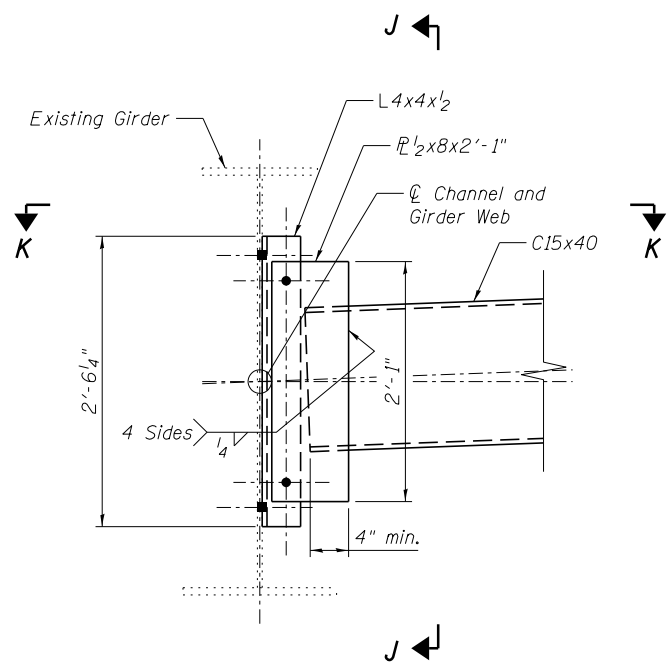
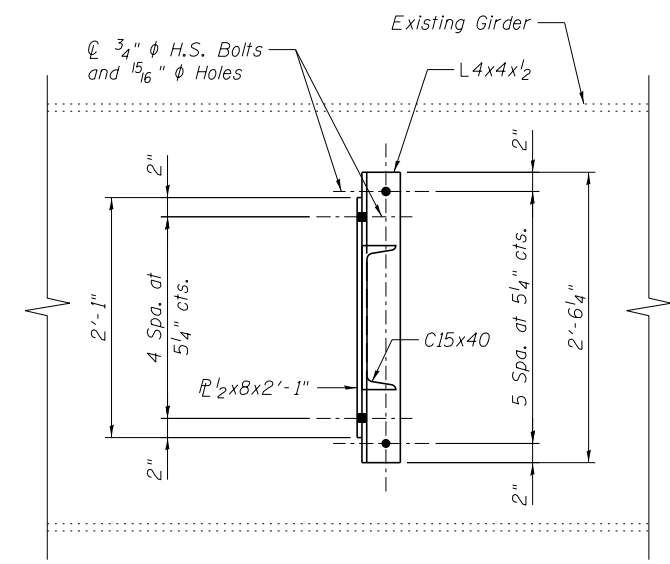


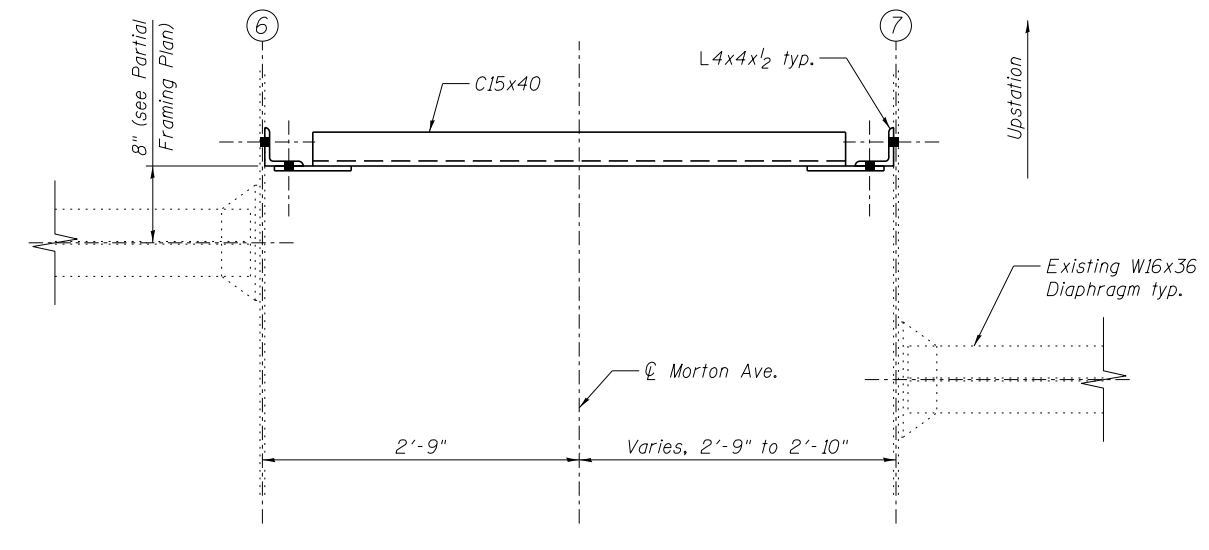
PARTIAL FRAMING PLAN



INTERIOR DIAPHRAGM - D
(Looking upstation)



SECTION J-J



VIEW K-K
(Intermediate diaphragm shown, pier similar)

- NOTES:**
- Two hardened washers required for each set of oversized holes.
 - Alternate channels C15x50 are permitted to facilitate material acquisition. Calculated weight of structural steel is based on C15x40 sections. The alternate, if utilized, shall be provided at no extra cost to the department.

benesch
engineers · scientists · planners

Alfred Benesch & Company
205 North Michigan Avenue, Suite 2400
Chicago, Illinois 60601
312-565-0450 Job No. 10056

FILE NAME = 0900141.68620.11.frmpl.dgn	USER NAME = mbecker	DESIGNED - JDC	REVISED -
		CHECKED - MRB/AAV	REVISED -
	PLOT SCALE =	DRAWN - PRT	REVISED -
	PLOT DATE = 7/16/2012	CHECKED - MRB/AAV	REVISED -

STATE OF ILLINOIS
DEPARTMENT OF TRANSPORTATION

PARTIAL FRAMING PLAN AND DETAILS 1 OF 2
STRUCTURE NO. 090-0141

SHEET NO. SD11 OF SD29 SHEETS

F.A.I. RTE.	SECTION	COUNTY	TOTAL SHEETS	SHEET NO.
74	90-[14R;14HB-4;14.14HVB]BRJ	TAZEWELL	2433	2050
CONTRACT NO. 68620				
ILLINOIS FED. AID PROJECT				

x:\100000s\10056\engineer\ing-documents\phase-11\MortonOver-174\Final\0900141_68620_11.frmpl.dgn

7:36:23 AM

7/16/2012