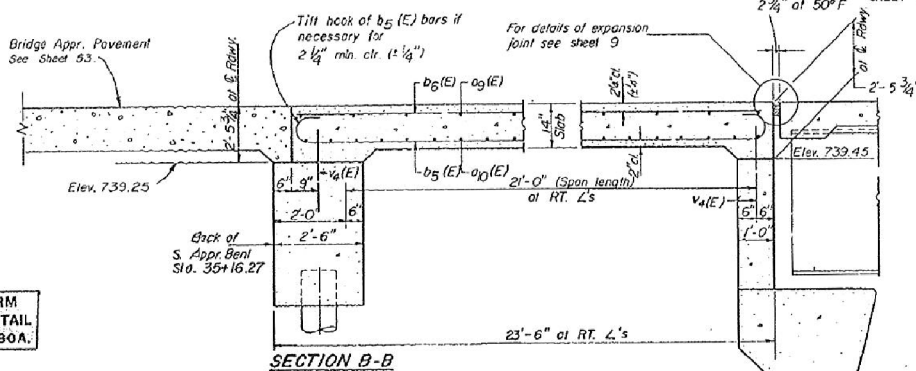
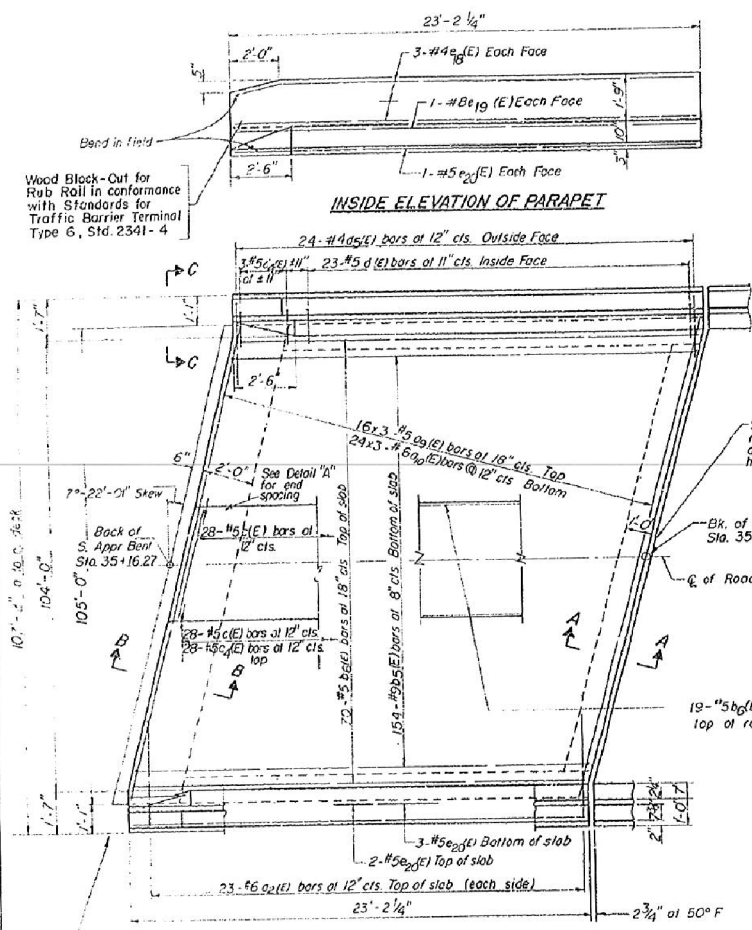


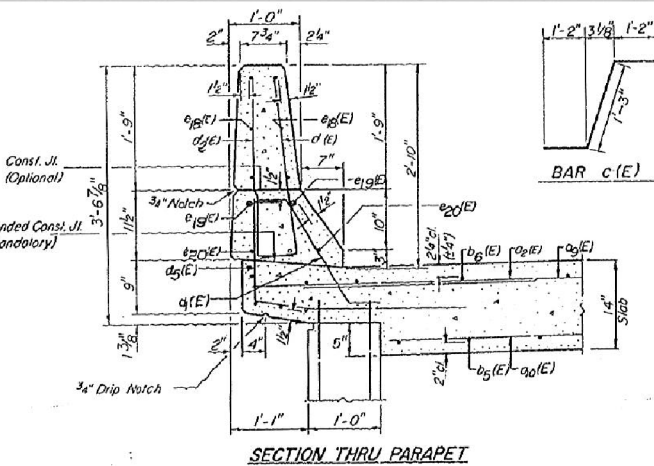
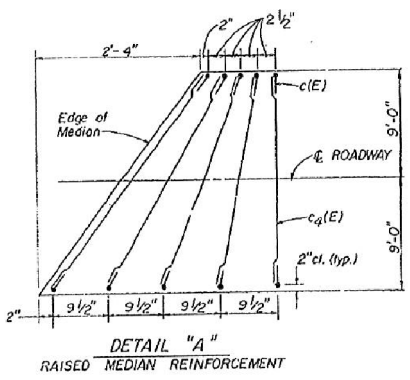
STATE OF ILLINOIS
DEPARTMENT OF TRANSPORTATION

RTL	SECTION	COUNTY	TOTAL SHEETS	SHEET NO.
FAI 74	#	TAZEWELL	260	42
STA.	TO STA.			
ILLINOIS				
X (90-15-1, 15-1 HB, 15W)-1				
SHEET 12 OF 22				



MINIMUM BAR LAP
#5 bars = 2'-2"
#6 bars = 2'-7"

NOTE: FOR SLIPFORM
PARAPET DETAIL
SEE SHEET 60A.

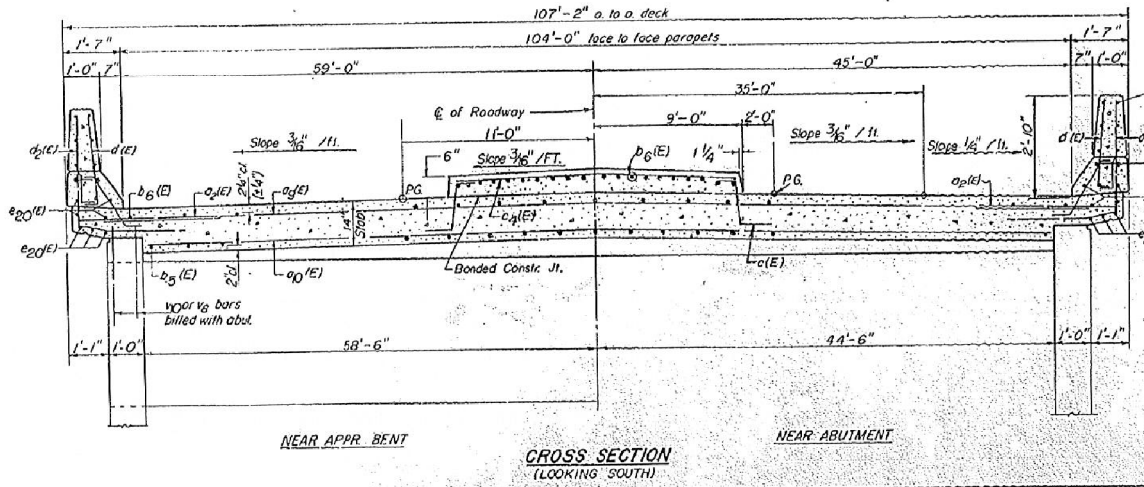
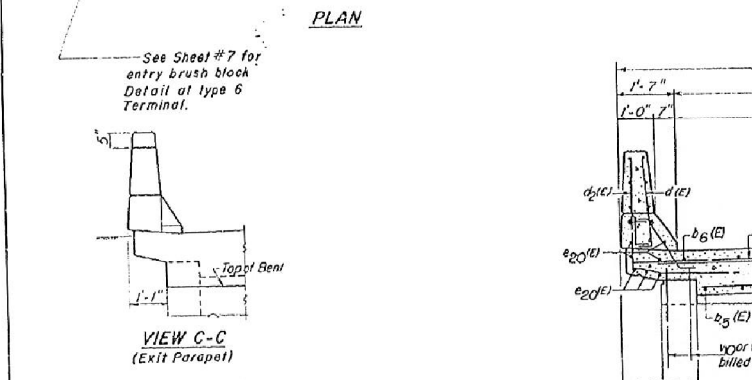


SOUTH APPR. SLAB
BILL OF MATERIAL

Bar	No.	Size	Length	Shape
a9(E)	46	#6	4'-0"	
a9(E)	48	#5	36'-6"	
a9(E)	72	#6	36'-3"	
b5(E)	154	#9	28'-3"	
b5(E)	89	#5	22'-10"	
c(E)	56	#5	3'-7"	
c4(E)	28	#5	17'-6"	
d(E)	46	#5	2'-0"	
d1(E)	46	#5	2'-7"	
d2(E)	48	#4	3'-0"	
d4(E)	6	#5	4'-2"	
d5(E)	48	#4	4'-10"	
e9(E)	12	#4	22'-10"	
e9(E)	4	#8	22'-10"	
e20(E)	14	#5	22'-10"	
Reinforcement Bars (Epoxy Coated)		Lbs.	23,390	
Class X Concrete		CuYds.	129.0	

SOUTH APPROACH SLAB

FAI 74 E. FAU 6729
SECTION (90-15-1, 15-1 HB, 15W)-1
TAZEWELL COUNTY
STATION 36+49.87



DESIGNED	L.L. VIELEY
CHECKED	P.L.M.
DRAWN	C.D. SMEDDEN
CHECKED	L.V.

SA-2-L (E309) 6-1-89
R.A.N. CONSULTANTS INC.

FOR INFORMATION ONLY

benesch
engineers · scientists · planners
Alfred Benesch & Company
205 North Michigan Avenue, Suite 2400
Chicago, Illinois 60601
312-565-0450 Job No. 10056

FILE NAME =	USER NAME = mbecker	DESIGNED - JDC	REVISED -
0900141.68620.24.exist10.dgn		CHECKED - MRB	REVISED -
		DRAWN - PRT	REVISED -
		CHECKED - MRB	REVISED -

STATE OF ILLINOIS
DEPARTMENT OF TRANSPORTATION

EXISTING PLANS
STRUCTURE NO. 090-0141
SHEET NO. SD24 OF SD29 SHEETS

F.A.I. RTE.	SECTION	COUNTY	TOTAL SHEETS	SHEET NO.
74	90-14R(14HB-4,14,14HB)/BRJ	TAZEWELL	2433	2063
			CONTRACT NO. 68620	
ILLINOIS FED. AID PROJECT				

7:38:10 AM X:\100005\10056\Engineer\ng-Document\Phase 11\MortonOver174\Final\0900141.68620.24.exist10.dgn 7/16/2012