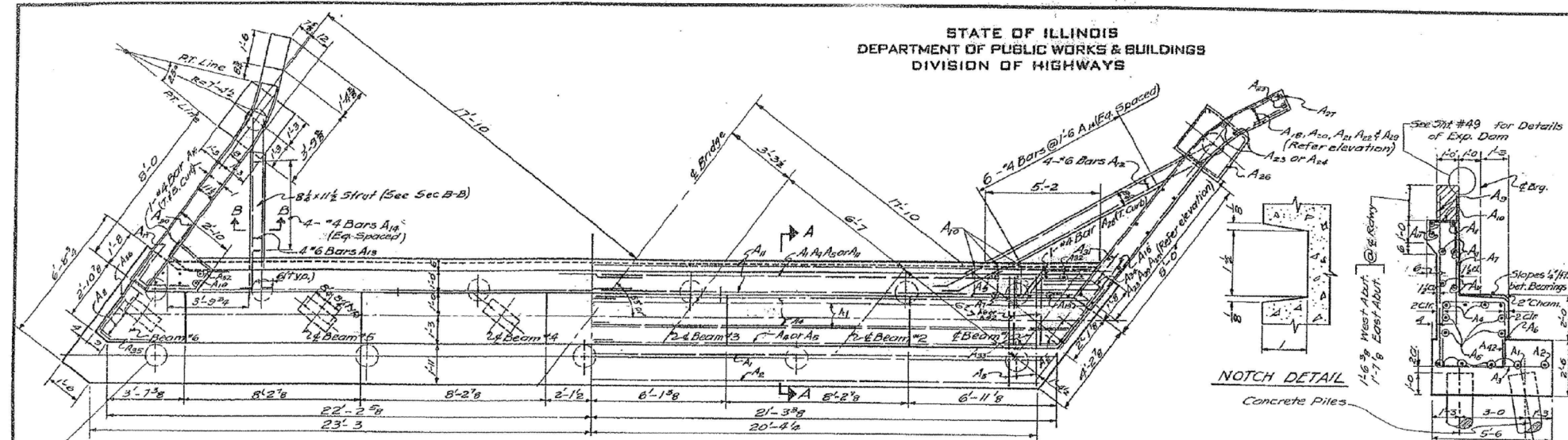
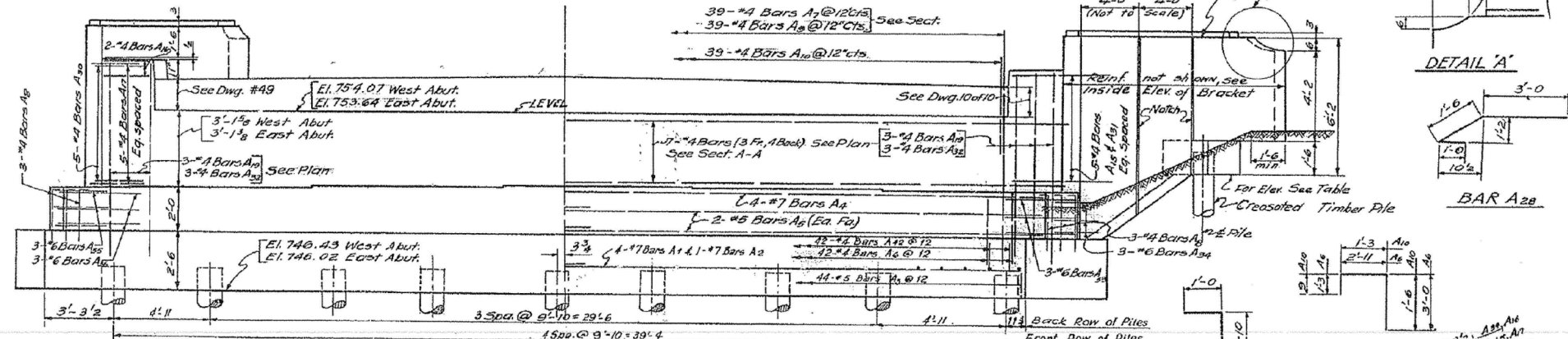


STATE OF ILLINOIS
DEPARTMENT OF PUBLIC WORKS & BUILDINGS
DIVISION OF HIGHWAYS

ROUTE No.	SEC.	COUNTY	SECTION	SHEET
FAI 74		TAZEWELL	89	41
FED. ROAD DIST. No. 7		ILLINOIS		



NORTH STRUCTURE - PLAN OF WEST ABUTMENT
EAST ABUTMENT SIMILAR BY ROTATION

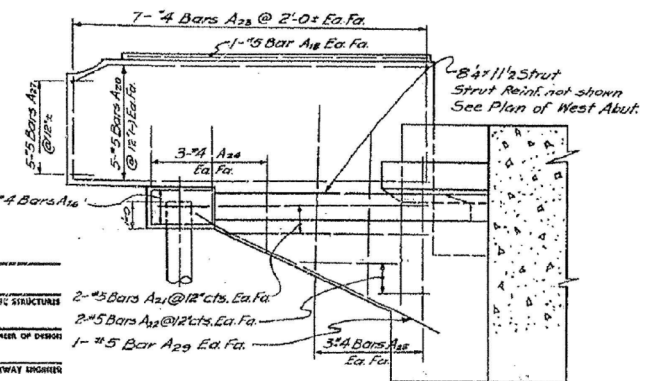


NORTH STRUCTURE - ELEVATION OF WEST ABUTMENT
EAST ABUTMENT SIMILAR BY ROTATION

Beam	West Abut.	East Abut.	Wing Pile Cap (Bot.)	West Abut. N. Wing Struts	East Abut. N. Wing Struts
1	750.95	750.61	751.75		751.34
2	751.04	750.68			
3	751.10	750.74			
4	751.10	750.72			
5	751.02	750.63			
6	750.93	750.52	751.74		751.26

DESIGNED M.B.
CHECKED S.M.
DRAWN J.P.
CHECKED E.L.

EXAMINED:
ENGINEER OF BRIDGES AND TRAFFIC STRUCTURES
PASSED
APPROVED:
CHIEF ENGINEER



BAR NO.	SIZE	LENGTH	SHAPE
A1	8	7	35'-2
A2	2	7	34'-4
A3	124	5	5'-2
A4	8	7	34'-8
A5	8	5	34'-4
A6	126	4	7'-2
A7	118	4	5'-8
A8	12	4	3'-10
A9	118	4	7'-8
A10	118	4	3'-6
A11	14	4	34'-2
A12	8	6	14'-0
A13	8	6	8'-0
A14	20	4	5'-2
A15	10	4	5'-2
A16	4	4	5'-6
A17	10	4	4'-10
A18	8	4	10'-8
A19	12	4	7'-0
A20	40	5	12'-8
A21	16	5	7'-0
A22	16	5	3'-9
A23	56	4	4'-3
A24	24	4	3'-6
A25	24	4	5'-6
A26	12	4	9'-5
A27	20	5	3'-11/2
A28	2	4	5'-6
A29	8	5	6'-8
A30	10	4	5'-0
A31	10	4	4'-0
A32	12	4	9'-0
A33	6	6	6'-0
A34	6	6	4'-10
A35	6	6	4'-6
A36	6	6	4'-3
A37	8	7	33'-7
A38	2	7	32'-8
A39	8	7	33'-1
A40	8	5	32'-9
A41	14	4	32'-7
A42	126	4	5'-9
A43	126	4	5'-9
A44	126	4	5'-9
A45	126	4	5'-9
A46	126	4	5'-9
A47	126	4	5'-9
A48	126	4	5'-9
A49	126	4	5'-9
A50	126	4	5'-9
A51	126	4	5'-9
A52	126	4	5'-9
A53	126	4	5'-9
A54	126	4	5'-9
A55	126	4	5'-9
A56	126	4	5'-9
A57	126	4	5'-9
A58	126	4	5'-9
A59	126	4	5'-9
A60	126	4	5'-9
A61	126	4	5'-9
A62	126	4	5'-9
A63	126	4	5'-9
A64	126	4	5'-9
A65	126	4	5'-9
A66	126	4	5'-9
A67	126	4	5'-9
A68	126	4	5'-9
A69	126	4	5'-9
A70	126	4	5'-9
A71	126	4	5'-9
A72	126	4	5'-9
A73	126	4	5'-9
A74	126	4	5'-9
A75	126	4	5'-9
A76	126	4	5'-9
A77	126	4	5'-9
A78	126	4	5'-9
A79	126	4	5'-9
A80	126	4	5'-9
A81	126	4	5'-9
A82	126	4	5'-9
A83	126	4	5'-9
A84	126	4	5'-9
A85	126	4	5'-9
A86	126	4	5'-9
A87	126	4	5'-9
A88	126	4	5'-9
A89	126	4	5'-9
A90	126	4	5'-9
A91	126	4	5'-9
A92	126	4	5'-9
A93	126	4	5'-9
A94	126	4	5'-9
A95	126	4	5'-9
A96	126	4	5'-9
A97	126	4	5'-9
A98	126	4	5'-9
A99	126	4	5'-9
A100	126	4	5'-9

BAR NO.	SIZE	LENGTH	SHAPE
A1	16	7	23'-9
A2	4	7	22'-10
A3	66	5	5'-2
A4	8	7	44'-0
A5	16	5	22'-10
A6	84	4	7'-2
A7	78	4	5'-8
A8	12	4	3'-10
A9	78	4	7'-8
A10	78	4	3'-6
A11	28	4	22'-8
A12	8	6	14'-0
A13	8	6	8'-0
A14	20	4	5'-2
A15	10	4	5'-2
A16	4	4	5'-6
A17	10	4	4'-10
A18	8	4	10'-8
A19	12	4	7'-0
A20	40	5	12'-8
A21	16	5	7'-0
A22	16	5	3'-9
A23	56	4	4'-3
A24	24	4	3'-6
A25	24	4	5'-6
A26	12	4	9'-5
A27	20	5	3'-11/2
A28	2	4	5'-6
A29	8	5	6'-8
A30	10	4	5'-0
A31	10	4	4'-0
A32	12	4	9'-0
A33	6	6	6'-0
A34	6	6	4'-10
A35	6	6	4'-6
A36	6	6	4'-3
A37	8	7	33'-7
A38	2	7	32'-8
A39	8	7	33'-1
A40	8	5	32'-9
A41	14	4	32'-7
A42	126	4	5'-9
A43	126	4	5'-9
A44	126	4	5'-9
A45	126	4	5'-9
A46	126	4	5'-9
A47	126	4	5'-9
A48	126	4	5'-9
A49	126	4	5'-9
A50	126	4	5'-9
A51	126	4	5'-9
A52	126	4	5'-9
A53	126	4	5'-9
A54	126	4	5'-9
A55	126	4	5'-9
A56	126	4	5'-9
A57	126	4	5'-9
A58	126	4	5'-9
A59	126	4	5'-9
A60	126	4	5'-9
A61	126	4	5'-9
A62	126	4	5'-9
A63	126	4	5'-9
A64	126	4	5'-9
A65	126	4	5'-9
A66	126	4	5'-9
A67	126	4	5'-9
A68	126	4	5'-9
A69	126	4	5'-9
A70	126	4	5'-9
A71	126	4	5'-9
A72	126	4	5'-9
A73	126	4	5'-9
A74	126	4	5'-9
A75	126	4	5'-9
A76	126	4	5'-9
A77	126	4	5'-9
A78	126	4	5'-9
A79	126	4	5'-9
A80	126	4	5'-9
A81	126	4	5'-9
A82	126	4	5'-9
A83	126	4	5'-9
A84	126	4	5'-9
A85	126	4	5'-9
A86	126	4	5'-9
A87	126	4	5'-9
A88	126	4	5'-9
A89	126	4	5'-9
A90	126	4	5'-9
A91	126	4	5'-9
A92	126	4	5'-9
A93	126	4	5'-9
A94	126	4	5'-9
A95	126	4	5'-9
A96	126	4	5'-9
A97	126	4	5'-9
A98	126	4	5'-9
A99	126	4	5'-9
A100	126	4	5'-9

Type	Concrete	Crested (Number)
Capacity	30 Tons	10 Tons
Est. Length	65'-0	30'-0
No. Req'd. (2 Abut.)	22	4

ABUTMENTS-NO. STRUCTURE
F.A.I. ROUTE 74 SECTION 90-14VB
F.A.I. ROUTE 74 OVER PENNA RAILROAD
STATION 550+24.84
TAZEWELL COUNTY
WARREN AND VAN PRAAG, INC.
CONSULTING ENGINEERS - DECATUR, ILLINOIS

FOR INFORMATION ONLY



Alfred Benesch & Company
205 North Michigan Avenue, Suite 2400
Chicago, Illinois 60601
312-565-0450 Job No. 10056

FILE NAME =	USER NAME = mbecker	DESIGNED - MFB	REVISED -
xxxxxx.68620.13.ex1st2.dgn		CHECKED - MRB	REVISED -
		DRAWN - MFB	REVISED -
		CHECKED - MRB	REVISED -

STATE OF ILLINOIS
DEPARTMENT OF TRANSPORTATION

EXISTING PLANS 2 OF 11
STRUCTURE NO. 090-0014 / 0015 REMOVAL

SHEET NO. SR13 OF SR22 SHEETS

F.A.I. RTE.	SECTION	COUNTY	TOTAL SHEETS	SHEET NO.
74	90-114R(14HB-4,14,14HB)BRJ	TAZEWELL	2433	2081
			CONTRACT NO. 68620	
ILLINOIS FED. AID PROJECT				

X:\100005\10056\Engineer\ing-Document\Phase 1\174 over RR\Final\xxxxxx.68620.13.ex1st2.dgn 7:44:59 AM 7/16/2012