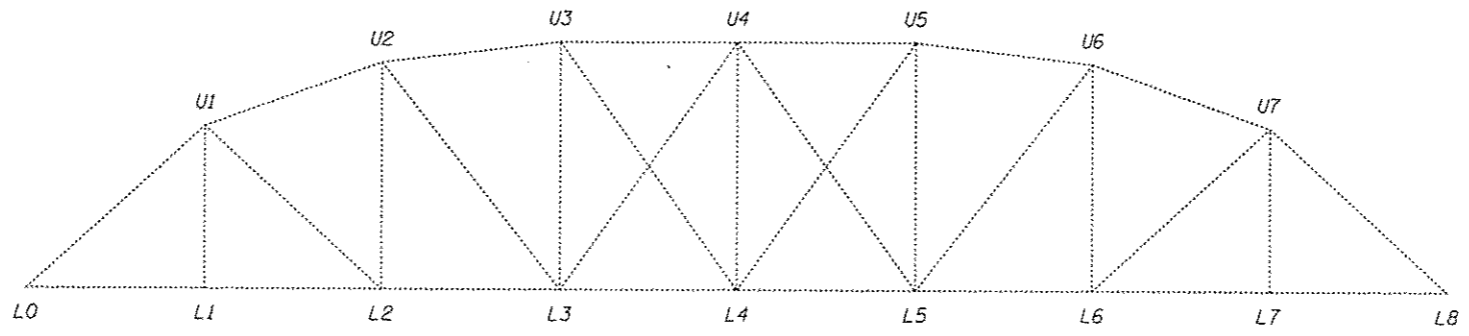


**SPAN 5**  
(Looking East)



**SPANS 3, 4, 6, 7 & 8**  
(Looking East)

DESIGNED - MKC	EXAMINED	DATE - JULY 26, 2012	<b>STATE OF ILLINOIS DEPARTMENT OF TRANSPORTATION</b>	<b>TYPICAL TRUSS LAYOUT SN 062-0036</b>	F.A.S. RTE.	SECTION	COUNTY	TOTAL SHEETS	SHEET NO.	
CHECKED - VP	PASSED	REVISED			2369	(1048-D1)	MARSHALL	17	10	
DRAWN - Kyle M. Steffen		REVISED			CONTRACT NO. 68B16					
CHECKED - MKC VP					SHEET NO. 3 OF 10 SHEETS					
					ILLINOIS FED. AID PROJECT					