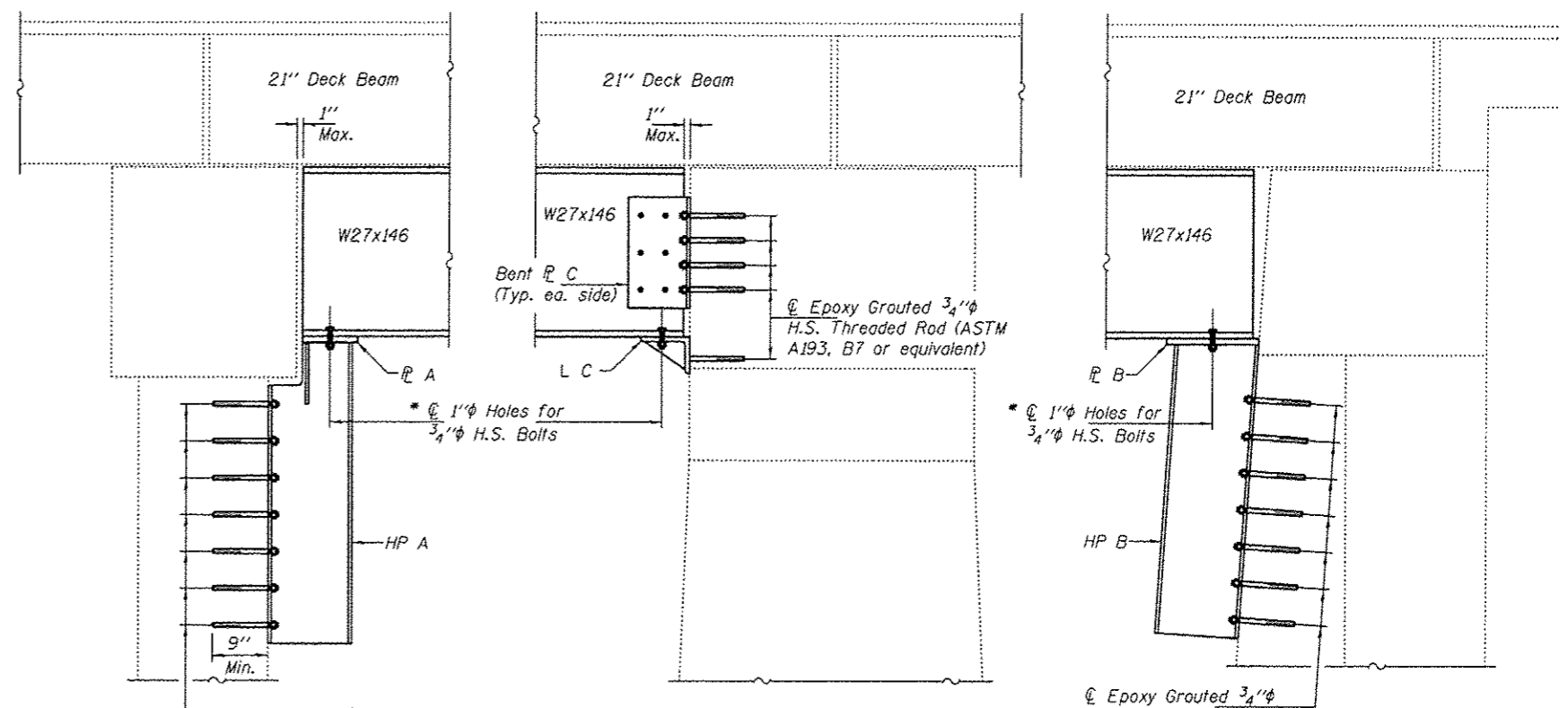


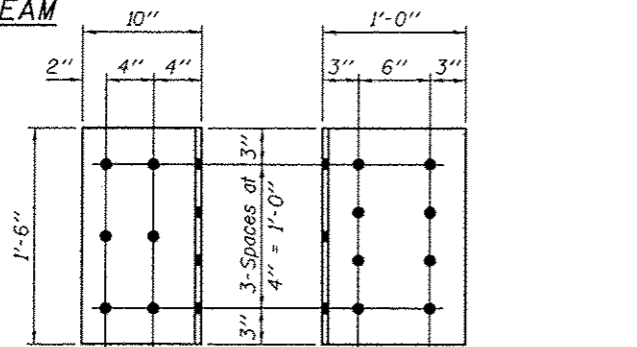
SECTION THRU BEAM



SECTION THRU BENTS 2 & 3

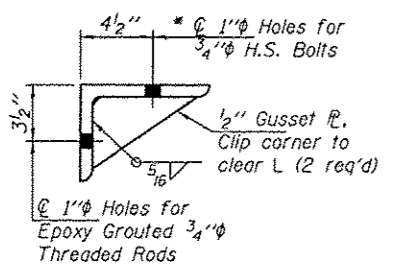
SECTION THRU PIER 2

SECTION THRU E. ABUT.

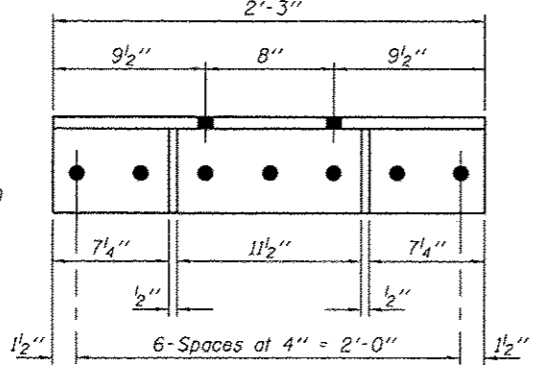


BENT BAR C

Bar 1/2" x 1'-6" x 1'-10"  
(2 Required)

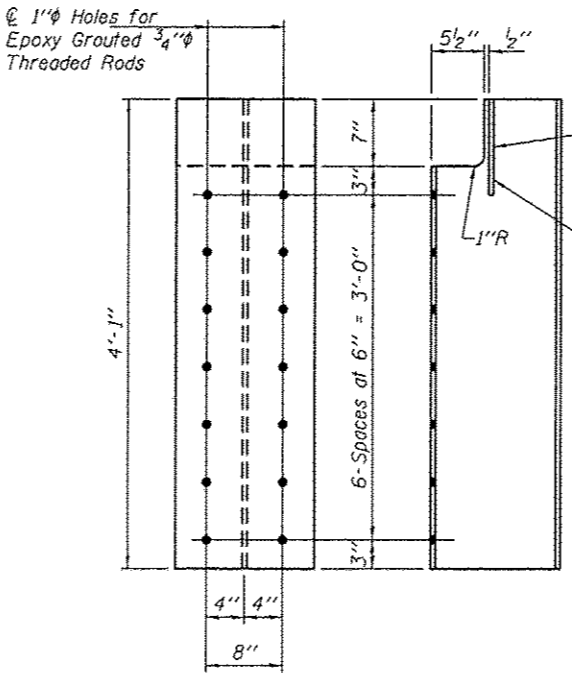


SECTION THRU L C



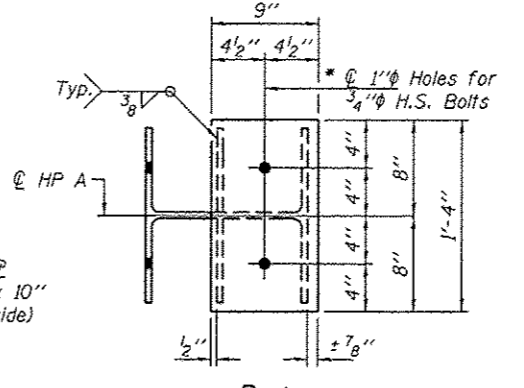
L C

L 8 x 6 x 3/4 x 2'-3"  
(1 Required)



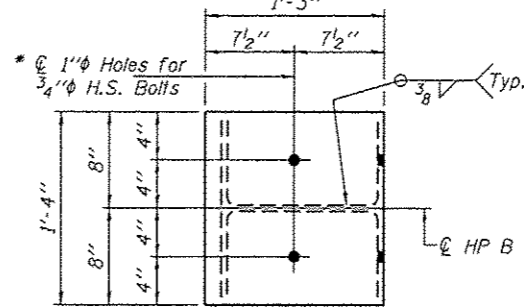
HP A

HP14x73 x 4'-1"  
(2-Required)



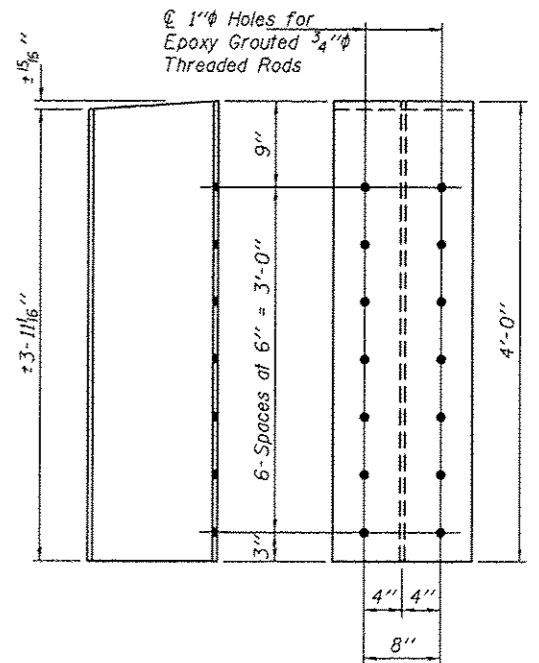
BAR A

Bar 1" x 9" x 1'-4"  
(2-Required)



BAR B

Bar 1" x 1'-3" x 1'-4"  
(1-Required)



HP B

HP14x73 x 4'-0"  
(1-Required)

\* Field drill holes in Support Beams using holes in Bars & L's as template.

DESIGNED - VHV	EXAMINED - <i>Timothy A. Ricketts</i>	DATE - JULY 26, 2012
CHECKED - VP	ACTING ENGINEER OF STRUCTURAL SERVICES	
DRAWN - Kyle M. Steffen	PASSED - <i>Carl Perry</i>	
CHECKED - VHV VP	ACTING ENGINEER OF BRIDGES AND STRUCTURES	

STATE OF ILLINOIS		REPAIR DETAILS		F.A.S. RTE. 384	SECTION (2-10-BR-111-2)	COUNTY PEORIA	TOTAL SHEETS 7	SHEET NO. 7
DEPARTMENT OF TRANSPORTATION		SN 072-0047		CONTRACT NO. 68B20		ILLINOIS FED. AID PROJECT		

STATE OF ILLINOIS		REPAIR DETAILS		F.A.S. RTE. 384	SECTION (2-10-BR-111-2)	COUNTY PEORIA	TOTAL SHEETS 7	SHEET NO. 7
DEPARTMENT OF TRANSPORTATION		SN 072-0047		CONTRACT NO. 68B20		ILLINOIS FED. AID PROJECT		

STATE OF ILLINOIS		REPAIR DETAILS		F.A.S. RTE. 384	SECTION (2-10-BR-111-2)	COUNTY PEORIA	TOTAL SHEETS 7	SHEET NO. 7
DEPARTMENT OF TRANSPORTATION		SN 072-0047		CONTRACT NO. 68B20		ILLINOIS FED. AID PROJECT		

STATE OF ILLINOIS		REPAIR DETAILS		F.A.S. RTE. 384	SECTION (2-10-BR-111-2)	COUNTY PEORIA	TOTAL SHEETS 7	SHEET NO. 7
DEPARTMENT OF TRANSPORTATION		SN 072-0047		CONTRACT NO. 68B20		ILLINOIS FED. AID PROJECT		