

09-21-12 LETTING ITEM 030

F.A.S. RTE.	SECTION	COUNTY	TOTAL SHEETS	SHEET NO.
1388	(Z-1D-BR-1)I-2	PEORIA	7	1
		ILLINOIS	CONTRACT NO. 68B20	

INDEX OF SHEETS

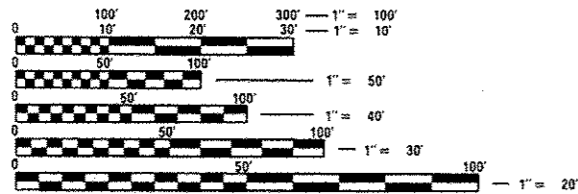
- 1 COVER SHEET
- 2 GENERAL NOTES/COMMITMENTS/JOB SPECIFIC NOTES
- 3 SUMMARY OF QUANTITIES
- 4 TYPICAL SECTIONS
- 5 PLAN VIEW
- 6-7 STRUCTURAL DETAILS

HIGHWAY STANDARDS

- 701001-02
- 701006-03
- 701201-04
- 701301-04
- 701901-02

DESIGN DESIGNATION

ADT = 1300 (2011)
 MU = 2.31%
 SU = 6.92%



FULL SIZE PLANS HAVE BEEN PREPARED USING STANDARD ENGINEERING SCALES. REDUCED SIZED PLANS WILL NOT CONFORM TO STANDARD SCALES. IN MAKING MEASUREMENTS ON REDUCED PLANS, THE ABOVE SCALES MAY BE USED.

J.U.L.I.E.
 JOINT UTILITY LOCATION INFORMATION FOR EXCAVATION
 1-800-892-0123
 OR 811

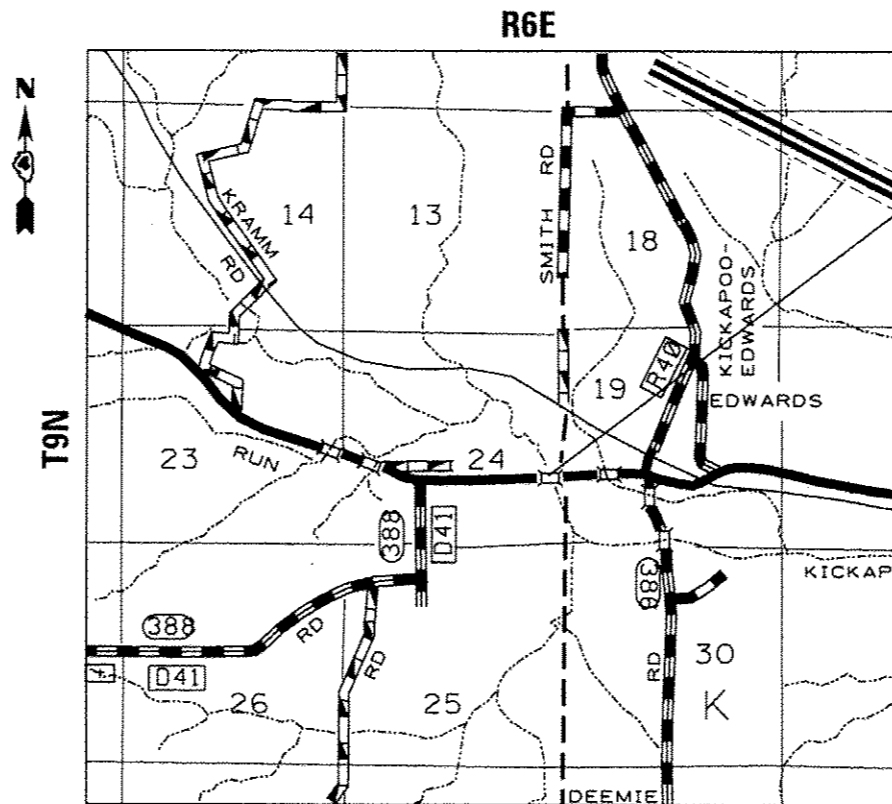
PROJECT ENGINEER RICH DOTSON
 PROJECT MANAGER TERRISA WORSFOLD

CATALOG NO. 034841-00D
 CONTRACT NO. 68B20

STATE OF ILLINOIS
 DEPARTMENT OF TRANSPORTATION
 DIVISION OF HIGHWAYS
**PROPOSED
 HIGHWAY PLANS**

FAS ROUTE 1388 (IL 8)
 SECTION (Z-1D-BR-1)I-2
 BRIDGE BEAM BRACING
 PEORIA COUNTY

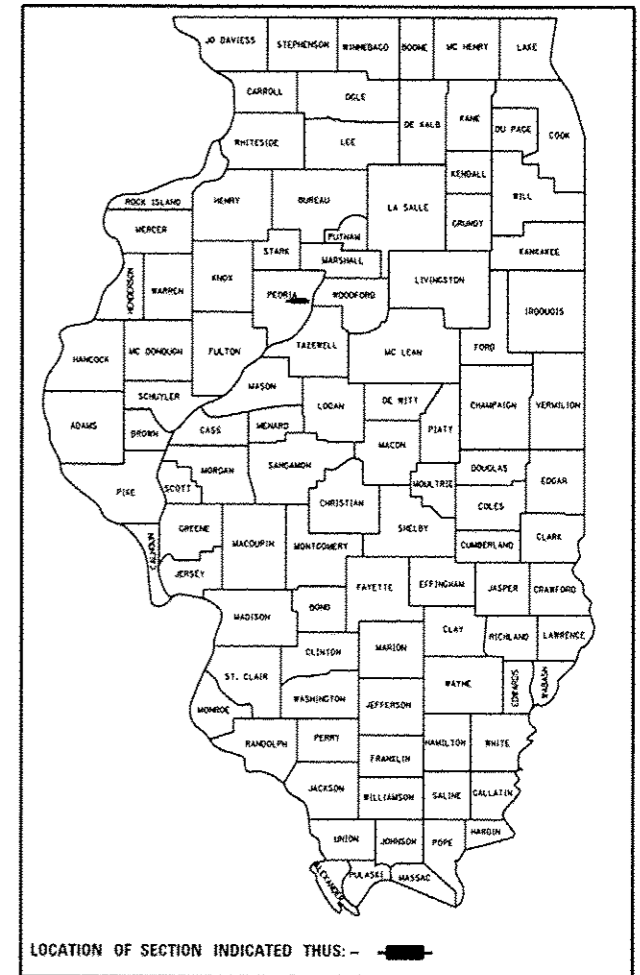
C-94-113-12



PROPOSED IMPROVEMENT
 SN 072-0047

GROSS LENGTH = 358 FT. = 0.05 MILE
 NET LENGTH = 280 FT. = 0.05 MILE

D-94-067-12



STATE OF ILLINOIS
 DEPARTMENT OF TRANSPORTATION
 DIVISION OF HIGHWAYS

SUBMITTED July 10, 2012
Joseph E. Cowan
 DEPUTY DIRECTOR OF HIGHWAYS, REGION ENGINEER

August 17, 2012
John D. Salamelli, P.E.
 acting ENGINEER OF DESIGN AND ENVIRONMENT

August 17, 2012
William R. Frey, Jr.
 acting DIRECTOR OF HIGHWAYS, CHIEF ENGINEER

**PRINTED BY THE AUTHORITY
 OF THE STATE OF ILLINOIS**

GENERAL NOTES

Plan dimensions and details relative to existing structure have been taken from existing plans and are subject to nominal construction variations. It shall be the Contractor's responsibility to verify such dimensions and details in the field and make necessary approved adjustments prior to construction or ordering of materials. Such variations shall not be cause for additional compensation for a change in the scope of the work, however, the Contractor will be paid for the quantity actually furnished at the unit price bid for the work.

ENVIRONMENTAL REVIEWS

Prior to the use of any proposed borrow areas, use areas (temporary access roads, detours, run-arounds, etc.) and/or waste areas, the Contractor shall file the required environmental resource request surveys according to Section 107.22 of the Standard Specifications. These surveys are required in order for the Department to conduct cultural and biological resource surveys for the proposed site.

Prior to any waste materials being removed from the construction site the required environmental resource surveys will need to be obtained and filed by the Contractor. Excess waste products removed from the construction site shall be disposed of as required in Section 202.03 of the Standard Specifications.

Any protruding metal bars shall be removed prior to the disposal of broken concrete at approved disposal sites.

The required environmental resource documentation shall include the following:

- * BDE Form 2289 (Environmental Survey Request)
- * A location map showing the size limits and location of the use area
- * Signed property owner agreement form-D4 P10100
- * Color photographs depicting the use area
- * Borrow Area Entry Agreement form-D4 P10101

Please note that a minimum of two weeks shall be allowed for the District to obtain the required environmental clearances.

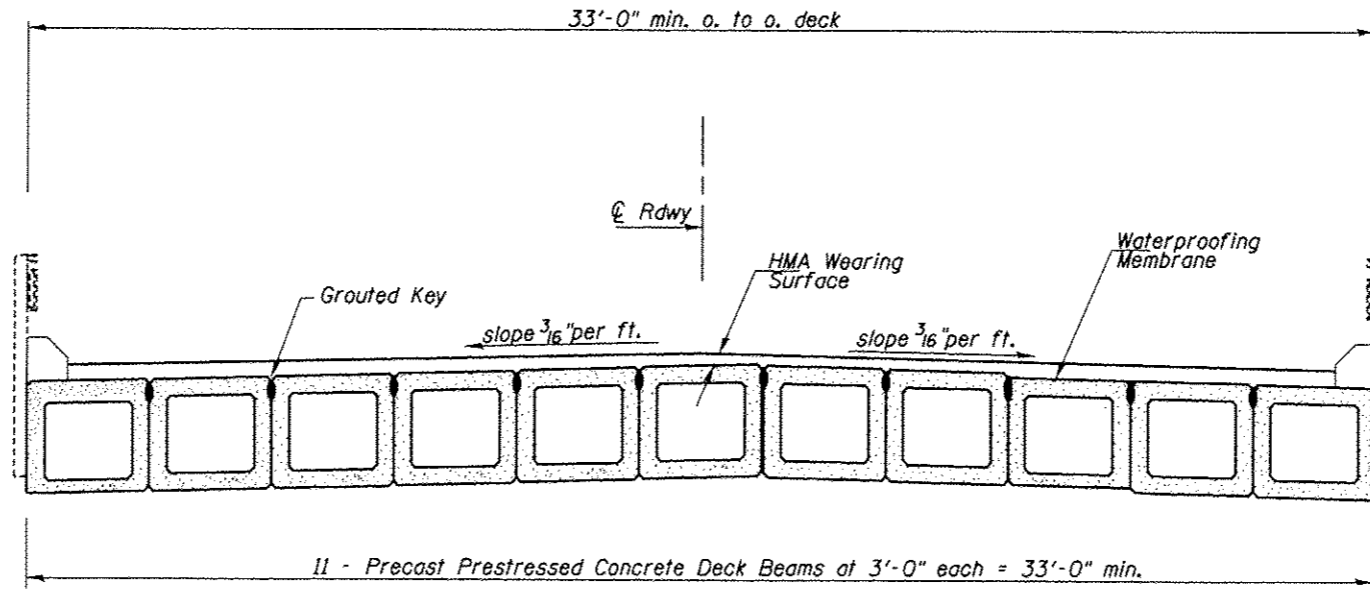
COMMITMENTS

THERE ARE NO COMMITMENTS FOR THIS PROJECT.

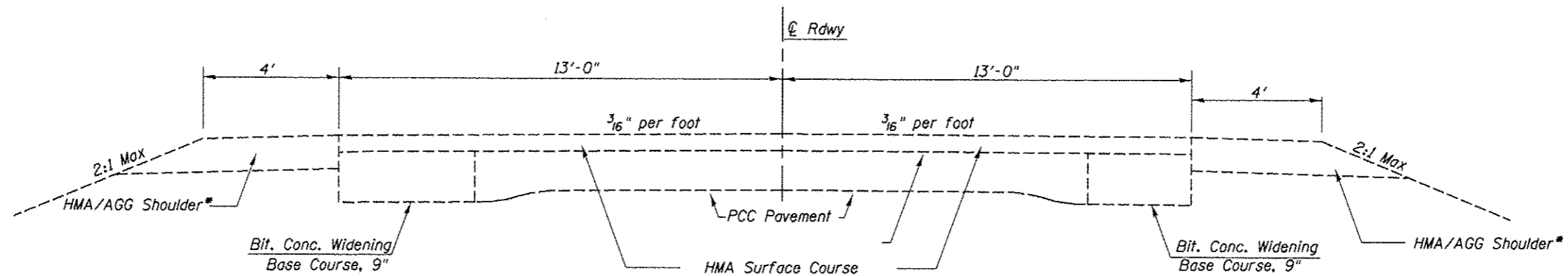
FILE NAME *	USER NAME *	DESIGNED -	REVISED -	STATE OF ILLINOIS DEPARTMENT OF TRANSPORTATION	GENERAL NOTES & COMMITMENTS	F.A.S. RTE.	SECTION	COUNTY	TOTAL SHEETS	SHEET NO.	
emergencybeamreplacement.dgn		DRAWN -	REVISED -			138B	(2-10-BR-1)J-2	PEORIA	7	2	
Default		CHECKED -	REVISED -			CONTRACT NO. 68B20					
		DATE -	REVISED -			ILLINOIS FED. AID PROJECT					
		PLOT SCALE * 41.6032' / in.		SCALE:	SHEET	OF	SHEETS	STA.	TO STA.		
		PLOT DATE * 7/6/2012									

CODE NO.	ITEM	UNIT	TOTAL QUANTITY	CONST. CODE
				0014 100 % STATE PEORIA
50500405	FURNISHING AND ERECTING STRUCTURAL STEEL	POUND	13,850	13,850
67100100	MOBILIZATION	L SUM	1	1
70100450	TRAFFIC CONTROL AND PROTECTION, STANDARD 701201	L SUM	1	1

TYPICAL SECTIONS



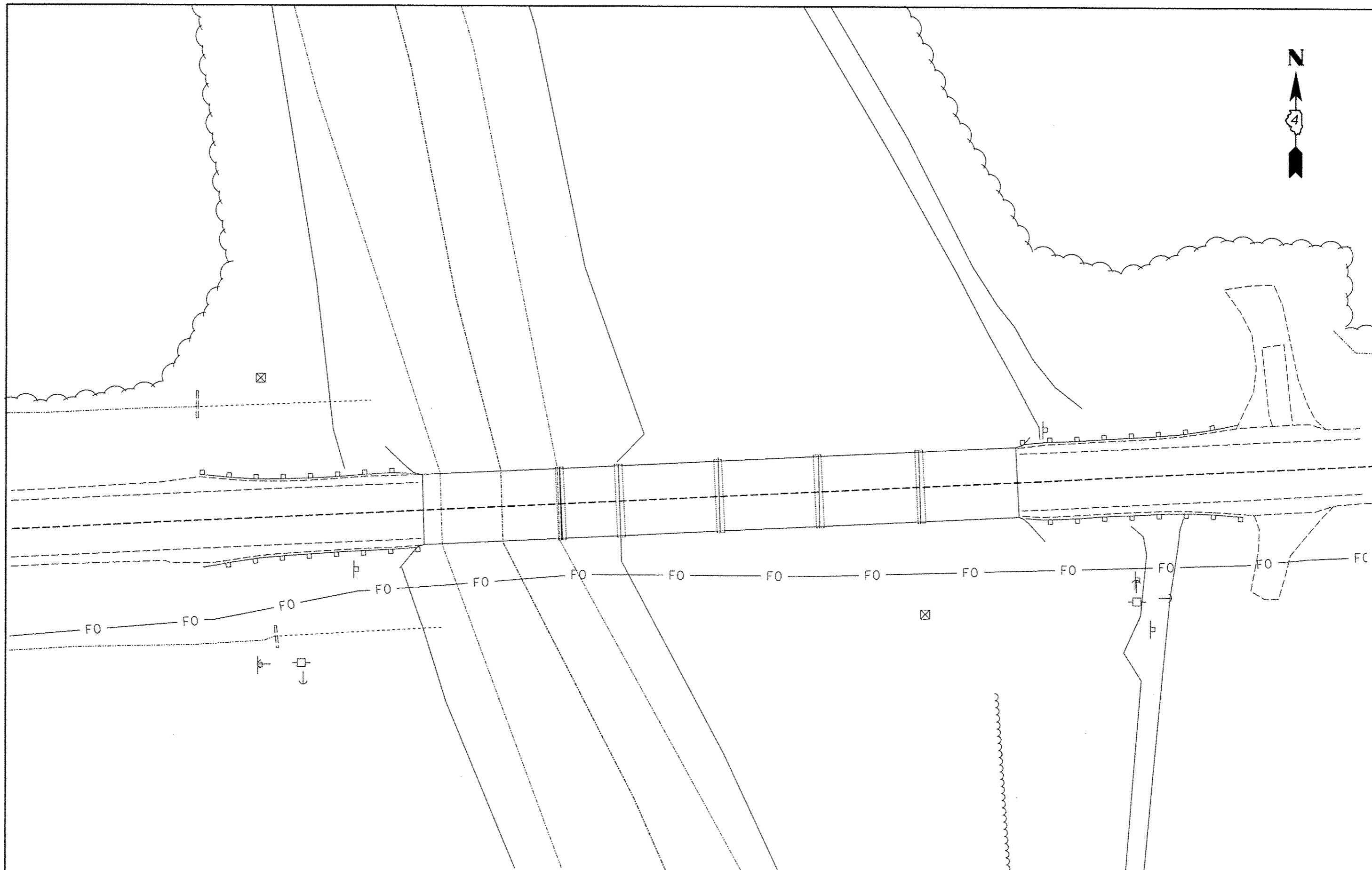
EXISTING BRIDGE DECK



EXISTING PAVEMENT TYPICAL SECTION

*Note: HMA shoulders are approximately 100' off bridge, typical.

FILE NAME : emergencybeonreplacement.dgn	USER NAME : kanossd	DESIGNED -	REVISED -	STATE OF ILLINOIS DEPARTMENT OF TRANSPORTATION	EXIST. TYPICAL SECTION	F.A.S. RTE.	SECTION	COUNTY	TOTAL SHEETS	SHEET NO.	
Default	PLOT SCALE : 41,6802 / in.	DRAWN -	REVISED -			1388	(Z-10-BR-1)1-2	PEORIA	7	4	
	PLOT DATE : 7/6/2012	CHECKED -	REVISED -			CONTRACT NO, 68B20					
		DATE -	REVISED -			ILLINOIS FED. AID PROJECT					
						SCALE:	SHEET	OF	SHEETS	STA. TO STA.	



FILE NAME =
emergencybeamreplacement.dgn
Default

USER NAME = konasd
PLOT SCALE = 41.6832' / in.
PLOT DATE = 7/6/2012

DESIGNED -
DRAWN -
CHECKED -
DATE -

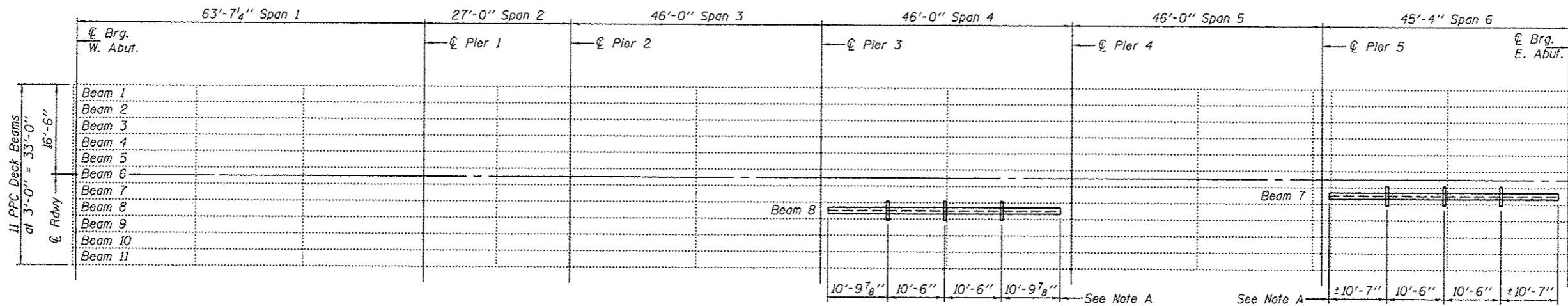
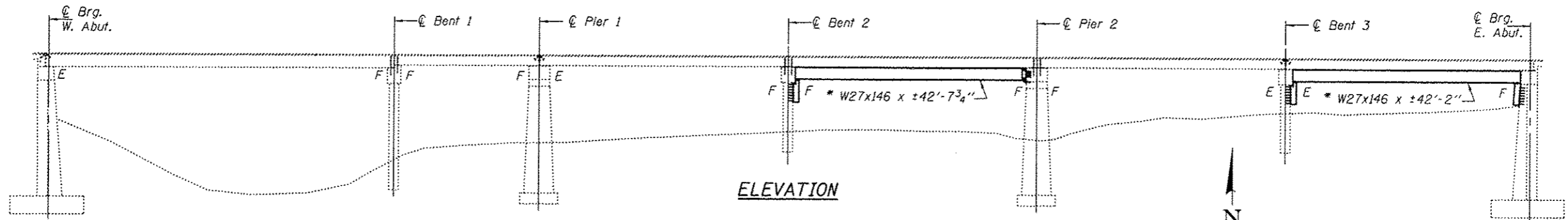
REVISED -
REVISED -
REVISED -
REVISED -

**STATE OF ILLINOIS
DEPARTMENT OF TRANSPORTATION**

PLAN VIEW

SCALE: SHEET OF SHEETS STA. TO STA.

F.A.S. RTE. 1388	SECTION 12-1D-111-2	COUNTY PEORIA	TOTAL SHEETS 7	SHEET NO. 5
CONTRACT NO. 68B20				
ILLINOIS FED. AID PROJECT				



PLAN

* Contractor is to verify beam length prior to ordering material. Other sections meeting the section modulus requirements shown may be allowed subject to approval by the Bureau of Bridges and Structures. Maximum Girder depth = 27". No additional payment will be allowed if the Contractor chooses a heavier steel section than the one specified in the plans. (Min. $S_x = 411 \text{ in}^3$)

Note A:
 ☉ Transverse tie IR's (3 per span). Place additional shims at midpoints between tie IR's. Securely weld shims to top flange of support beam. Minimum shim size is 6" x flange width.

GENERAL NOTES

All structural steel shall conform to AASHTO Classification M-270 Gr. 36, unless otherwise noted.

Plan dimensions and details relative to existing plans are subject to nominal construction variations. The Contractor shall field verify existing dimensions and details affecting new construction and make necessary approved adjustments prior to construction or ordering of materials. Such variations shall not be cause for additional compensation for a change in scope of the work, however, the Contractor will be paid for the quantity actually furnished at the unit price bid for the work.

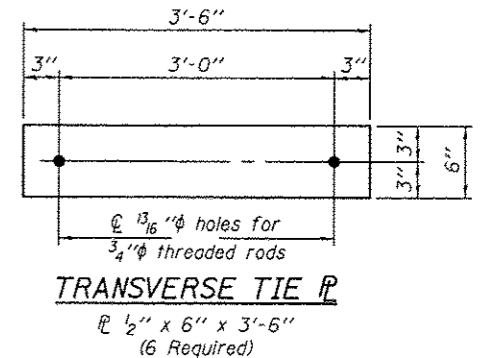
The contractor is advised that the existing PPC Deck Beams are in a deteriorated condition with reduced load carrying capacity. It is the Contractors responsibility to account for the condition of the beams when developing construction procedures.

See Section 584 of the Standard Specifications for Epoxy Grouting of Threaded Rods; Minimum embedment 9".

If the contractor's procedure for placement of beams involves placement of cranes or other heavy equipment on the bridge, a detailed procedure shall be submitted to the Engineer for approval. The procedure shall include calculations, prepared and sealed by an Illinois Licensed Structural Engineer, verifying that the equipment and procedure used will not overstress the existing beams. To distribute load to multiple beams and protect the exist. surface, in all cases a double layer mat of heavy timbers shall be used at all times under crane tracks or wheels and any outriggers in the down position. If necessary, shims shall be used under the crane mat to ensure uniform contact with the underlying beams.

The cost of epoxy grouting threaded rods on the pier cap, abutments and beams shall be included with Furnishing and Erecting Structural Steel.

The Contractor has the option of using used steel. See Special Provisions.



TOTAL BILL OF MATERIAL

ITEM	UNIT	QUANTITY
Furnishing and Erecting Structural Steel	Pound	13,850



Expires: November 30, 2012

DESIGNED - *Victor H. Veris*
 CHECKED - *Nan Rex*
 DRAWN - Kyle M. Stoffen
 CHECKED - *VP*

EXAMINED - *Timothy A. A. [Signature]*
 PASSED - *[Signature]*
 ACTING ENGINEER OF BRIDGES AND STRUCTURES

DATE - JULY 26, 2012

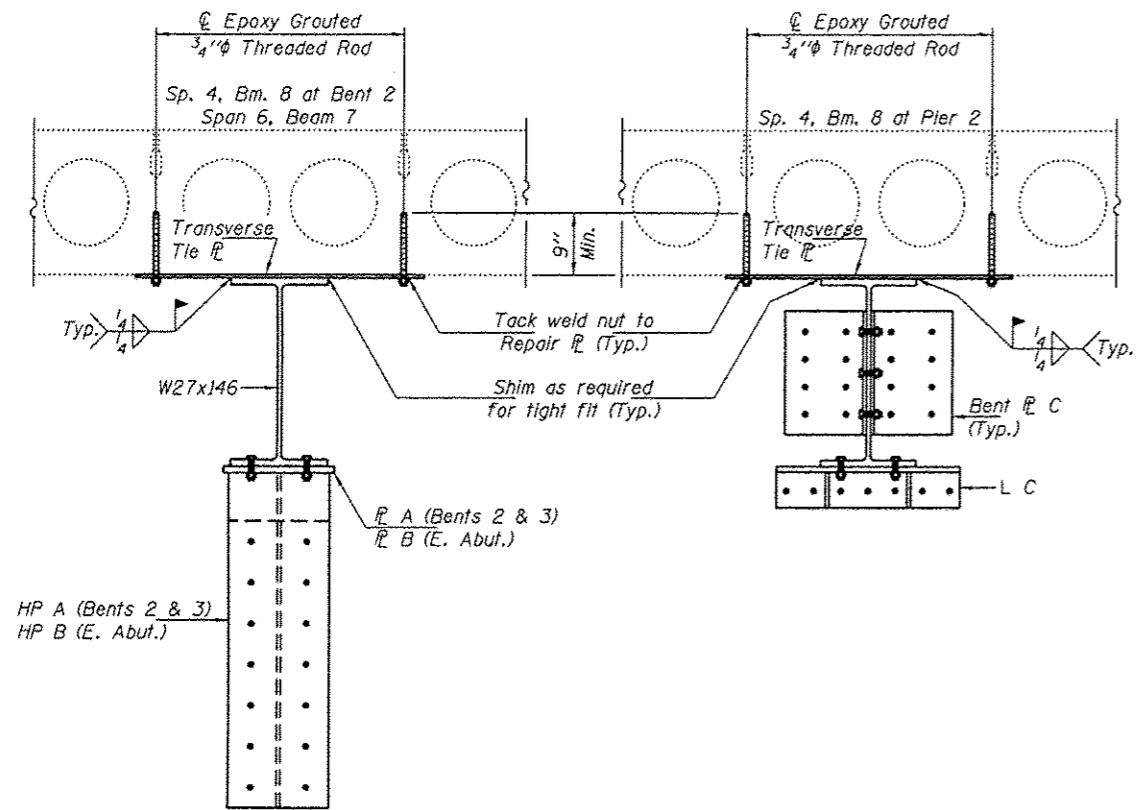
STATE OF ILLINOIS
 DEPARTMENT OF TRANSPORTATION

GENERAL PLAN & ELEVATION
 ILLINOIS ROUTE 8 OVER KICKAPOO CREEK
 SN 072-0047

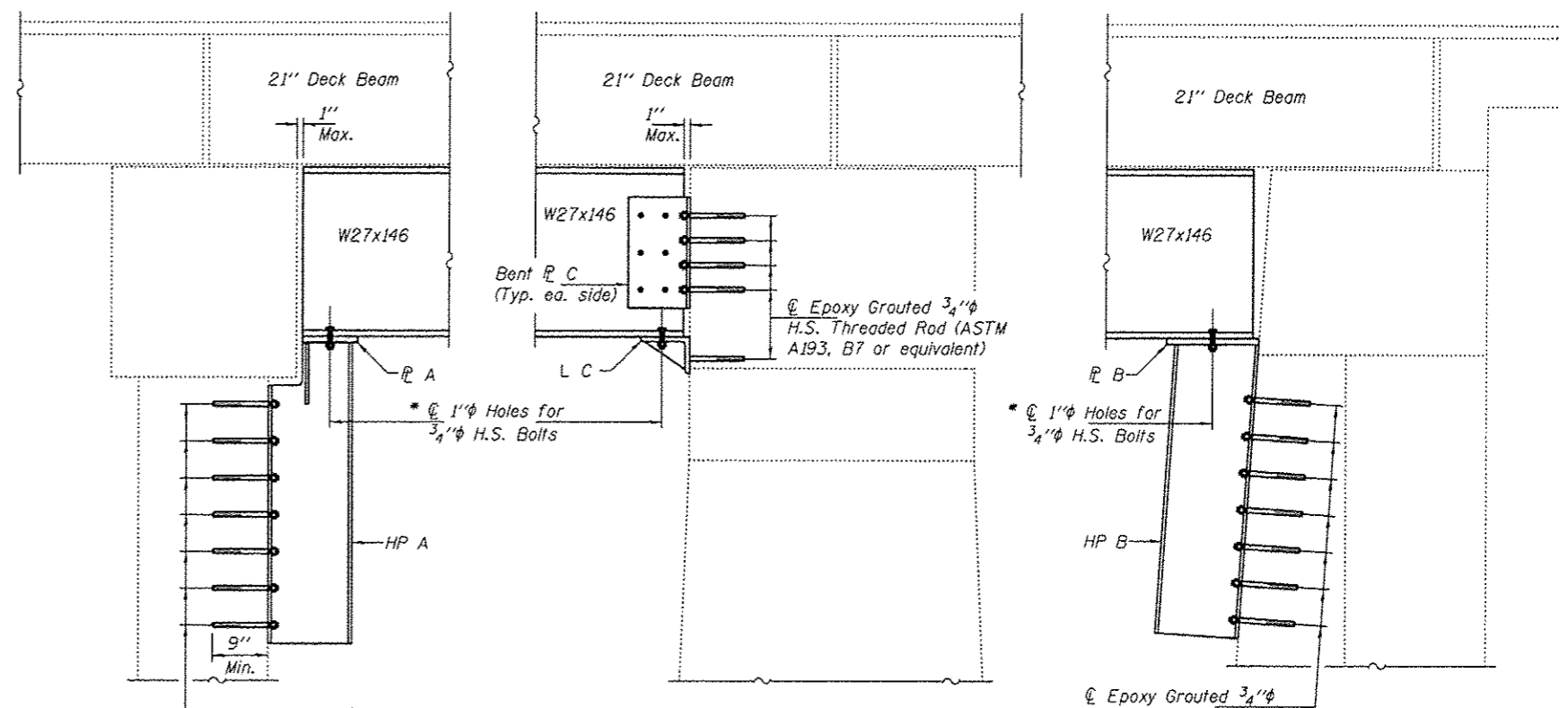
SHEET NO. 1 OF 2 SHEETS

F.A.S. RTE.	SECTION	COUNTY	TOTAL SHEETS	SHEET NO.
384	(2-10-BR-11)-2	PEORIA	7	6

CONTRACT NO. 68B20
 ILLINOIS FED. AID PROJECT



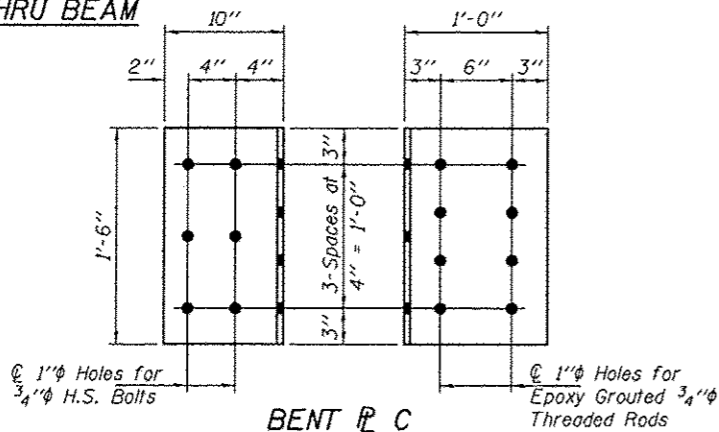
SECTION THRU BEAM



SECTION THRU BENTS 2 & 3

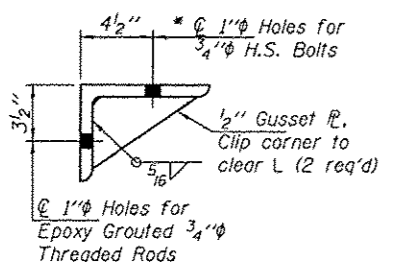
SECTION THRU PIER 2

SECTION THRU E. ABUT.

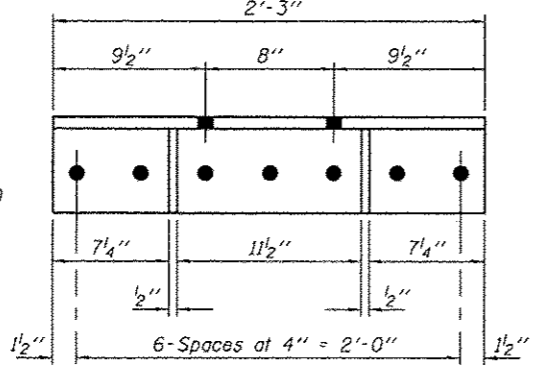


BENT BAR C

Bar 1/2" x 1'-6" x 1'-10"
(2 Required)

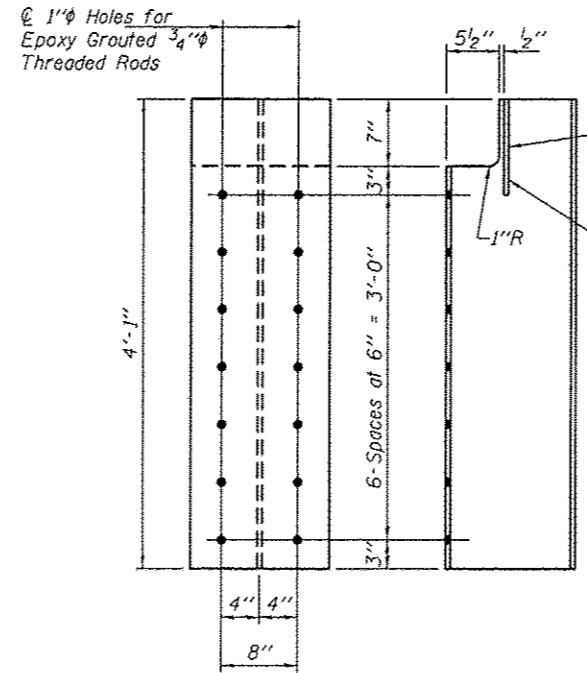


SECTION THRU L C



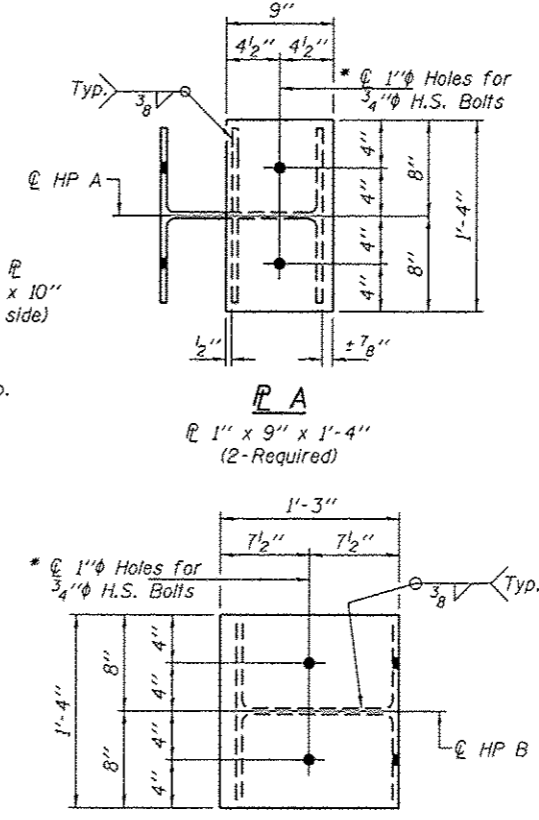
L C

L 8 x 6 x 3/4 x 2'-3"
(1 Required)



HP A

HP14x73 x 4'-1"
(2-Required)

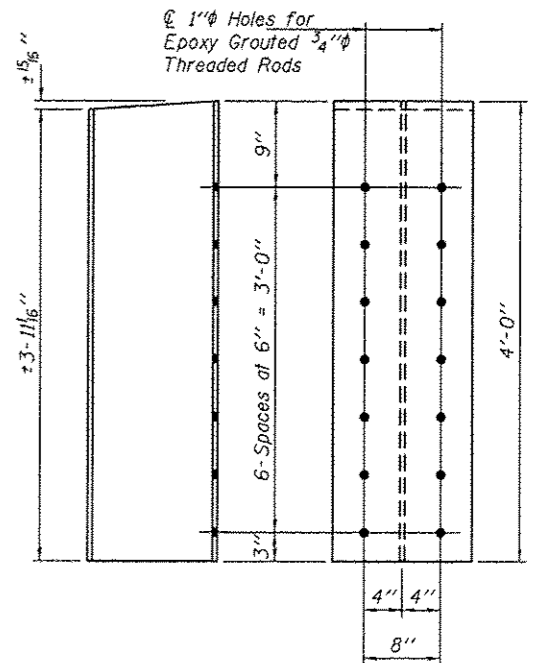


BAR A

Bar 1" x 9" x 1'-4"
(2-Required)

BAR B

Bar 1" x 1'-3" x 1'-4"
(1-Required)



HP B

HP14x73 x 4'-0"
(1-Required)

* Field drill holes in Support Beams using holes in Bars & L's as template.

DESIGNED - VHV	EXAMINED - <i>Timothy A. Ricketts</i>	DATE - JULY 26, 2012
CHECKED - VP	ACTING ENGINEER OF STRUCTURAL SERVICES	
DRAWN - Kyle M. Steffen	PASSED - <i>Carl Perry</i>	
CHECKED - VHV VP	ACTING ENGINEER OF BRIDGES AND STRUCTURES	

STATE OF ILLINOIS		REPAIR DETAILS		F.A.S. RTE. 384	SECTION (2-10-BR-111-2)	COUNTY PEORIA	TOTAL SHEETS 7	SHEET NO. 7
DEPARTMENT OF TRANSPORTATION		SN 072-0047		CONTRACT NO. 68B20		ILLINOIS FED. AID PROJECT		

STATE OF ILLINOIS		REPAIR DETAILS		F.A.S. RTE. 384	SECTION (2-10-BR-111-2)	COUNTY PEORIA	TOTAL SHEETS 7	SHEET NO. 7
DEPARTMENT OF TRANSPORTATION		SN 072-0047		CONTRACT NO. 68B20		ILLINOIS FED. AID PROJECT		

STATE OF ILLINOIS		REPAIR DETAILS		F.A.S. RTE. 384	SECTION (2-10-BR-111-2)	COUNTY PEORIA	TOTAL SHEETS 7	SHEET NO. 7
DEPARTMENT OF TRANSPORTATION		SN 072-0047		CONTRACT NO. 68B20		ILLINOIS FED. AID PROJECT		

STATE OF ILLINOIS		REPAIR DETAILS		F.A.S. RTE. 384	SECTION (2-10-BR-111-2)	COUNTY PEORIA	TOTAL SHEETS 7	SHEET NO. 7
DEPARTMENT OF TRANSPORTATION		SN 072-0047		CONTRACT NO. 68B20		ILLINOIS FED. AID PROJECT		