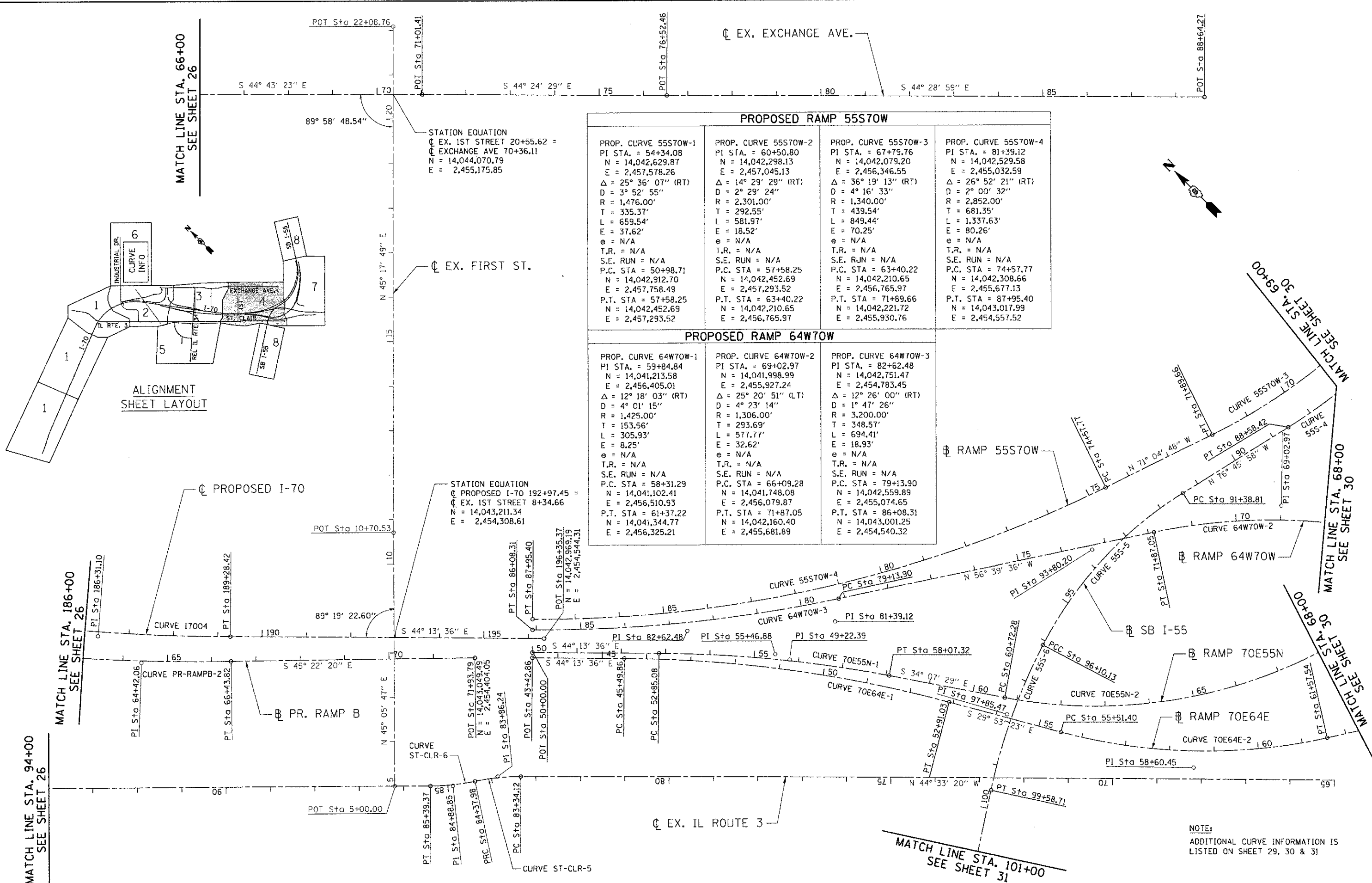


FILE NAME = ... USER NAME = ... DESIGNED - ... REVISED - ...



ALIGNMENT SHEET LAYOUT

PROPOSED RAMP 55S70W			
PROP. CURVE 55S70W-1 PI STA. = 54+34.08 N = 14,042,629.87 E = 2,457,578.26 Δ = 25° 36' 07" (RT) D = 3° 52' 55" R = 1,476.00' T = 335.37' L = 659.54' E = 37.62' e = N/A T.R. = N/A S.E. RUN = N/A P.C. STA = 50+98.71 N = 14,042,912.70 E = 2,457,758.49 P.T. STA = 57+58.25 N = 14,042,452.69 E = 2,457,293.52	PROP. CURVE 55S70W-2 PI STA. = 60+50.80 N = 14,042,298.13 E = 2,457,045.13 Δ = 14° 29' 29" (RT) D = 2° 29' 24" R = 2,301.00' T = 292.55' L = 581.97' E = 18.52' e = N/A T.R. = N/A S.E. RUN = N/A P.C. STA = 57+58.25 N = 14,042,452.69 E = 2,457,293.52 P.T. STA = 63+40.22 N = 14,042,210.65 E = 2,456,765.97	PROP. CURVE 55S70W-3 PI STA. = 67+79.76 N = 14,042,079.20 E = 2,456,346.55 Δ = 36° 19' 13" (RT) D = 4° 16' 33" R = 1,340.00' T = 439.54' L = 849.44' E = 70.25' e = N/A T.R. = N/A S.E. RUN = N/A P.C. STA = 63+40.22 N = 14,042,210.65 E = 2,456,765.97 P.T. STA = 71+89.66 N = 14,042,221.72 E = 2,455,930.76	PROP. CURVE 55S70W-4 PI STA. = 81+39.12 N = 14,042,529.58 E = 2,455,032.59 Δ = 26° 52' 21" (RT) D = 2° 00' 32" R = 2,852.00' T = 681.35' L = 1,337.63' E = 80.26' e = N/A T.R. = N/A S.E. RUN = N/A P.C. STA = 74+57.77 N = 14,042,308.66 E = 2,455,677.13 P.T. STA = 87+95.40 N = 14,043,017.99 E = 2,454,557.52

PROPOSED RAMP 64W70W		
PROP. CURVE 64W70W-1 PI STA. = 59+84.84 N = 14,041,213.58 E = 2,456,405.01 Δ = 12° 18' 03" (RT) D = 4° 01' 15" R = 1,425.00' T = 153.56' L = 305.93' E = 8.25' e = N/A T.R. = N/A S.E. RUN = N/A P.C. STA = 58+31.29 N = 14,041,102.41 E = 2,456,510.93 P.T. STA = 61+37.22 N = 14,041,344.77 E = 2,456,325.21	PROP. CURVE 64W70W-2 PI STA. = 69+02.97 N = 14,041,998.99 E = 2,455,927.24 Δ = 25° 20' 51" (LT) D = 4° 23' 14" R = 1,306.00' T = 293.69' L = 577.77' E = 32.62' e = N/A T.R. = N/A S.E. RUN = N/A P.C. STA = 66+09.28 N = 14,041,748.08 E = 2,456,079.87 P.T. STA = 71+87.05 N = 14,042,160.40 E = 2,455,681.89	PROP. CURVE 64W70W-3 PI STA. = 82+62.48 N = 14,042,751.47 E = 2,454,783.45 Δ = 12° 26' 00" (RT) D = 1° 47' 26" R = 3,200.00' T = 348.57' L = 694.41' E = 18.93' e = N/A T.R. = N/A S.E. RUN = N/A P.C. STA = 79+13.90 N = 14,042,559.89 E = 2,455,074.65 P.T. STA = 86+08.31 N = 14,043,001.25 E = 2,454,540.32

MATCH LINE STA. 94+00
SEE SHEET 26

MATCH LINE STA. 186+00
SEE SHEET 26

MATCH LINE STA. 69+00
SEE SHEET 30

MATCH LINE STA. 68+00
SEE SHEET 30

MATCH LINE STA. 68+00
SEE SHEET 30

MATCH LINE STA. 101+00
SEE SHEET 31

NOTE:
ADDITIONAL CURVE INFORMATION IS LISTED ON SHEET 29, 30 & 31

STATE OF ILLINOIS
DEPARTMENT OF TRANSPORTATION
I-70 CONNECTION

ALIGNMENTS, TIES & BENCHMARKS 4

F.A.P. RTE.	SECTION	COUNTY	TOTAL SHEETS	SHEET NO.
998	82-1R	ST. CLAIR	294	27
CONTRACT NO. 76C43				
FED. ROAD DIST. NO. ILLINOIS FED. AID PROJECT				



TENC & ASSOCIATES, INC.
ENGINEERS/ARCHITECTS/PLANNERS
CHICAGO, ILLINOIS

SCALE: 1"=100' SHEET NO. 4 OF 10 SHEETS STA. TO STA.