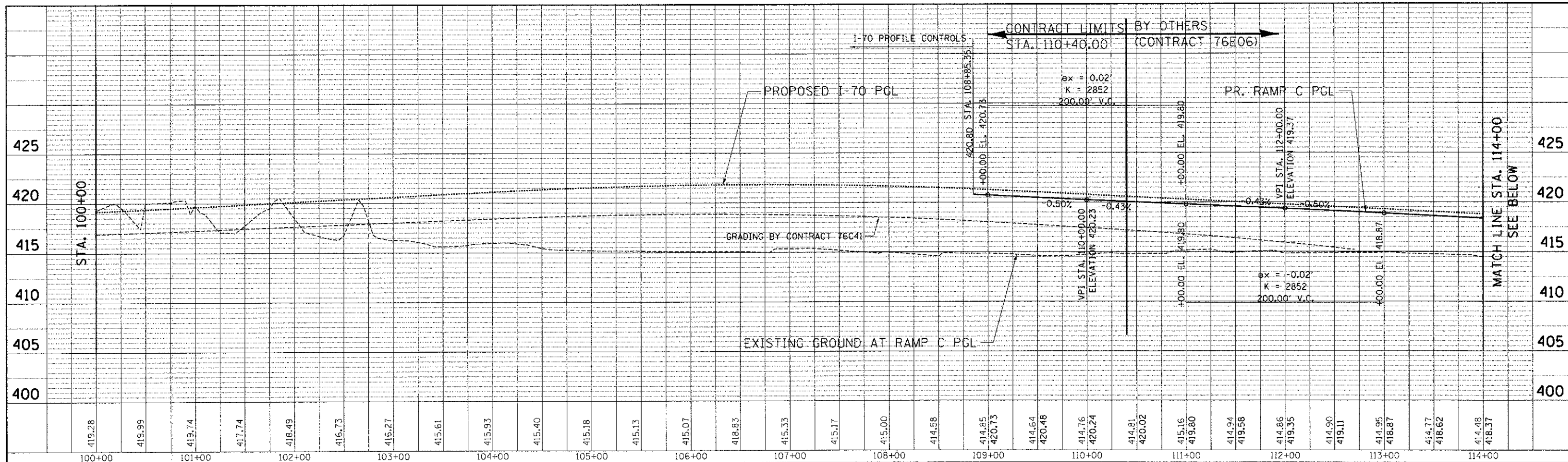
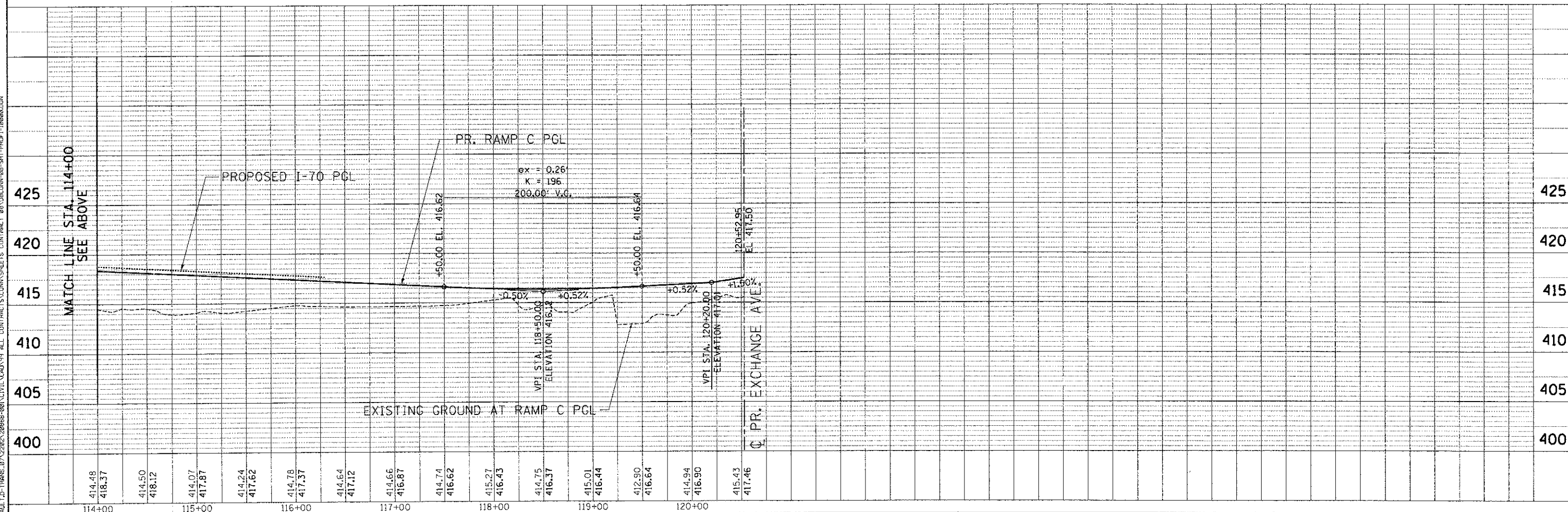


PLAN	SURVEYED	BY	DATE
NOTE BOOK NO.	ALIGNED		
	CHECKED		
	BY		
	NO.		



PROFILE	SURVEYED	BY	DATE
NOTE BOOK NO.	GRADES		
	CHECKED		
	BY		
	NO.		



6-27-2012, 9:40:15
 BONDURLOJ
 \S:\S-2044-AMVAULT-1D-TRANS-97-2282-20958-001\CIVIL\CAD\19 ALL CONTRACTS\CONNS\SEETS CONTRACT 88\BDCONN-88-SHT-PROF1-10000.DGN

FILE NAME =	USER NAME = \$USER*	DESIGNED - JB	REVISED -	STATE OF ILLINOIS DEPARTMENT OF TRANSPORTATION I-70 CONNECTION	PROPOSED RAMP C ROADWAY PROFILE STA. 100+00 TO STA. 120+53		F.A.P. RTE. 998	SECTION 82-1R	COUNTY ST. CLAIR	TOTAL SHEETS 294	SHEET NO. 49	
\$FILEL#		DRAWN - JB	REVISED -		SCALE: HORIZ. 1"=50'	VERT. 1"=5'	STA.	TO STA.	FED. ROAD DIST. NO.	ILLINOIS FED. AID PROJECT	CONTRACT NO. 76C43	
		CHECKED - ACL	REVISED -									
		DATE - 06/29/12	REVISED -									



TENG & ASSOCIATES, INC.
 ENGINEERS/ARCHITECTS/PLANNERS
 CHICAGO, ILLINOIS