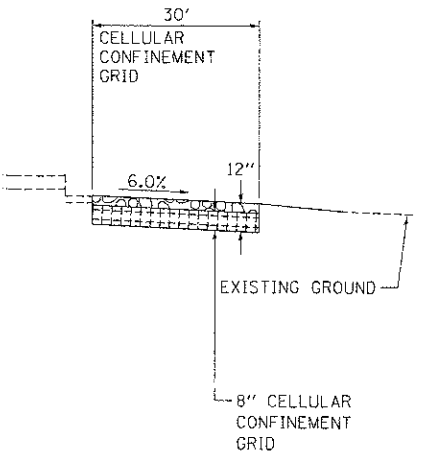
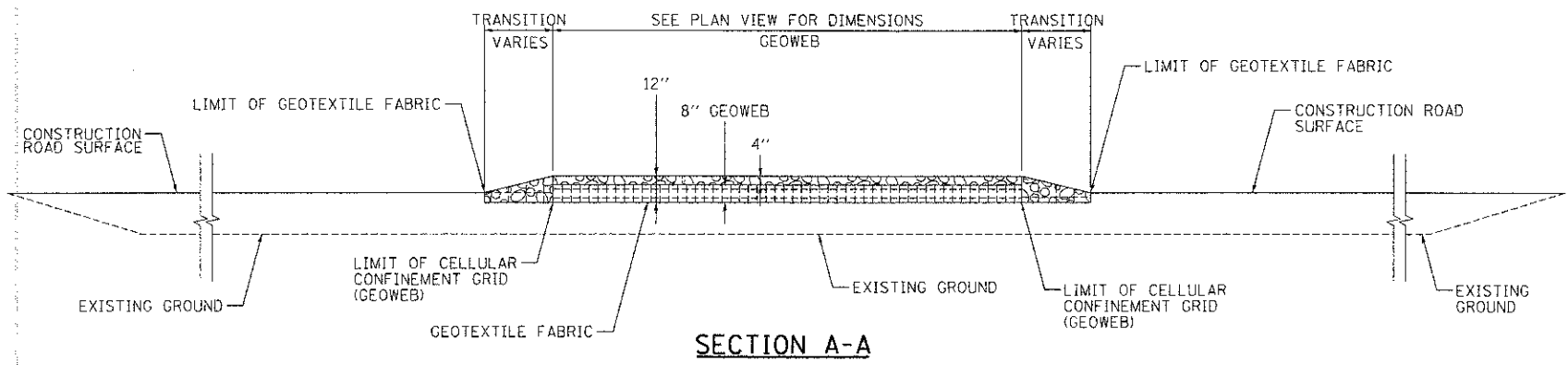
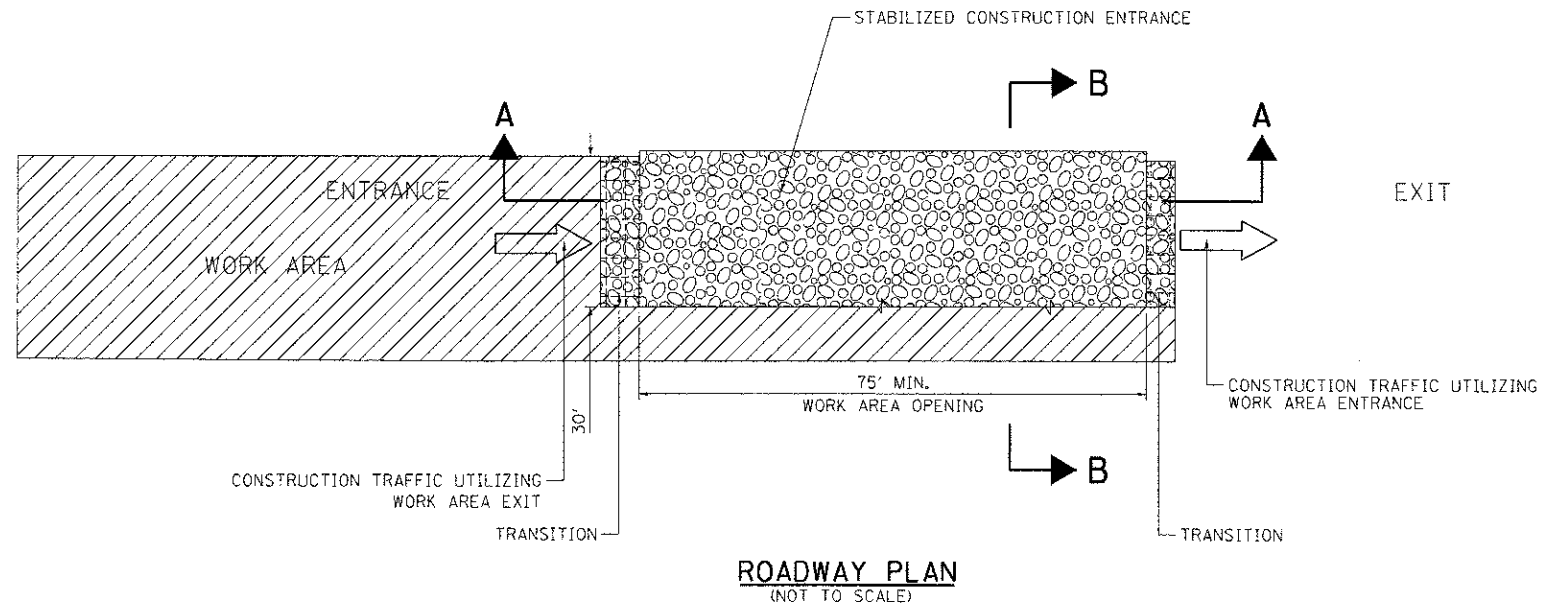


\DRG\98-90\DRG\1.DGN BONDILTO \YES-2064\A\VALT.D-TRANS. 87\2282\28869-30\ACT\1\CAD\99 ALL CONTRACTS\CONNSHEETS CONTRACT 88\UBCDNN-88-SHT-DRAIN\8E3L.DGN



**LEGEND:**

- ← DIRECTION OF TRAFFIC
- WORK AREA
- STABILIZED CONSTRUCTION ENTRANCE
- COARSE AGGREGATE, CA-3

**STABILIZED CONSTRUCTION ENTRANCE**

**NOTES:**

1. EXISTING DITCH DRAINAGE TO BE MAINTAINED. THE COST OF PIPE CULVERTS USED TO MAINTAIN EXISTING DITCH DRAINAGE WILL NOT BE PAID FOR SEPARATELY, BUT SHALL BE INCLUDED IN THE UNIT PRICE BID FOR SEDIMENT CONTROL, STABILIZED CONSTRUCTION ENTRANCE.
2. THE COST OF ANY COARSE AGGREGATE CA-3 USED FOR TRANSITION FROM THE CONSTRUCTION ROAD TO THE STABILIZED CONSTRUCTION ENTRANCE WILL NOT BE PAID FOR SEPARATELY, BUT SHALL BE INCLUDED IN THE UNIT PRICE BID FOR SEDIMENT CONTROL, STABILIZED CONSTRUCTION ENTRANCE.
3. STABILIZED CONSTRUCTION ENTRANCE DIMENSIONS SHALL BE APPROVED BY THE ENGINEER.

INDICATES PAYMENT INCLUDED IN COST OF ANOTHER ITEM

FILE NAME #	USER NAME # @USER#	DESIGNED - MDN	REVISED -	<b>STATE OF ILLINOIS</b> <b>DEPARTMENT OF TRANSPORTATION</b> I-70 CONNECTION	<b>EROSION CONTROL DETAILS</b>	F.A.P. RTE. 998	SECTION 82-1R	COUNTY ST. CLAIR	TOTAL SHEETS 294	SHEET NO. 64		
FILE#		DRAWN - MDN	REVISED -			SCALE: N.T.S.	SHEET NO. 1 OF 1 SHEETS	STA.	TO STA.	CONTRACT NO. 76C43		
		CHECKED - TKL	REVISED -			FED. ROAD DIST. NO. [ILLINOIS] FED. AID PROJECT						
		DATE - 06/29/12	REVISED -									

