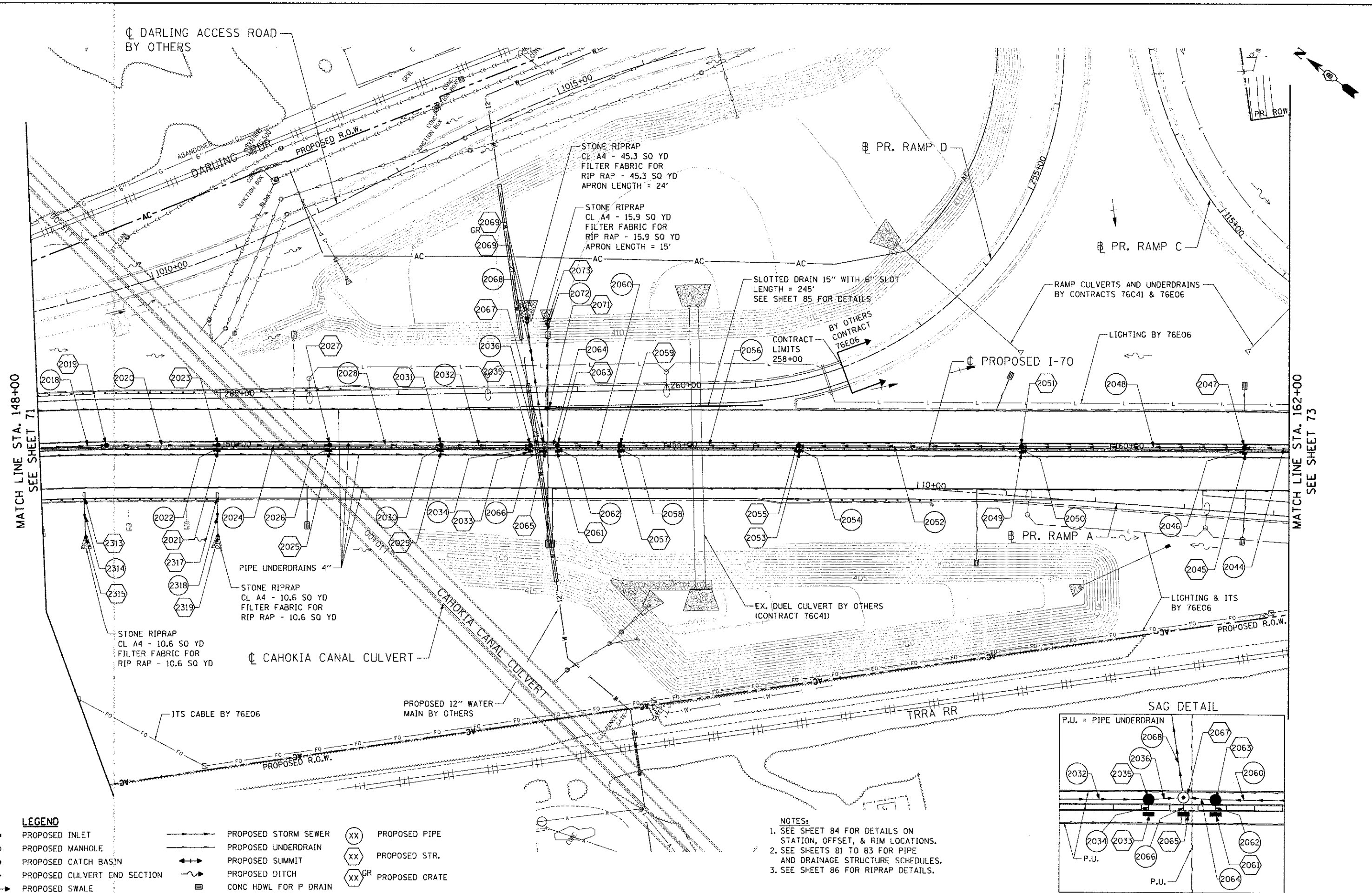
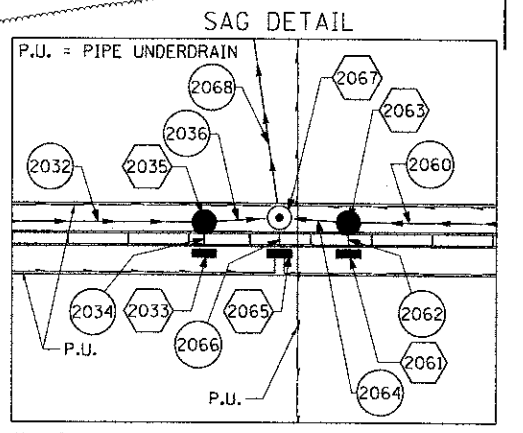


N:\DCCDN-09-MOTIFL.DGN, N:\DCCDN-09-GRDREL.DGN, N:\DCCDN-09-PRDRA2.DGN, N:\DCCDN-09-MOTIFL.DGN, N:\DCCDN-09-CONTPUR.DGN, N:\DCCDN-09-MOTIFL.DGN, N:\DCCDN-09-4-EUENDLON, N:\DCCDN-11-MOTIFL.DGN, N:\DCCDN-09-MOTIFL.DGN, N:\DCCDN-09-PRDRA2.DGN, N:\DCCDN-09-CONTPUR.DGN, N:\DCCDN-09-MOTIFL.DGN, N:\DCCDN-09-4-EUENDLON, N:\DCCDN-11-MOTIFL.DGN, N:\DCCDN-09-MOTIFL.DGN, N:\DCCDN-09-PRDRA2.DGN, N:\DCCDN-09-CONTPUR.DGN, N:\DCCDN-09-MOTIFL.DGN, N:\DCCDN-09-4-EUENDLON, N:\DCCDN-11-MOTIFL.DGN, N:\DCCDN-09-MOTIFL.DGN



- PROPOSED INLET
- PROPOSED MANHOLE
- PROPOSED CATCH BASIN
- ▶ PROPOSED CULVERT END SECTION
- ← PROPOSED SWALE
- PROPOSED STORM SEWER
- PROPOSED UNDERDRAIN
- PROPOSED SUMMIT
- PROPOSED DITCH
- ▭ CONC HDWL FOR P DRAIN
- ⊖ PROPOSED PIPE
- ⊖ PROPOSED STR.
- ⊖GR PROPOSED GRATE

NOTES:  
 1. SEE SHEET 84 FOR DETAILS ON STATION, OFFSET, & RIM LOCATIONS.  
 2. SEE SHEETS 81 TO 83 FOR PIPE AND DRAINAGE STRUCTURE SCHEDULES.  
 3. SEE SHEET 86 FOR RIPRAP DETAILS.



FILE NAME =	USER NAME = #USER#	DESIGNED - MDN	REVISED -
#FILE#		DRAWN - MDN	REVISED -
		CHECKED - TKL	REVISED -
		DATE - 06/29/12	REVISED -
PLOT SCALE = #SCALE#			
PLOT DATE = #DATE#			

**STATE OF ILLINOIS**  
**DEPARTMENT OF TRANSPORTATION**  
 I-70 CONNECTION

**PROPOSED I-70**  
**PROPOSED DRAINAGE & UTILITIES**  
**STA. 148+00 TO STA. 162+00**

SCALE: 1"=50'    SHEET NO. 3 OF 6 SHEETS    STA. TO STA.

F.A.P. RTE.	SECTION	COUNTY	TOTAL SHEETS	SHEET NO.
998	82-1R	ST. CLAIR	294	72
FED. ROAD DIST. NO.		ILLINOIS FED. AID PROJECT		CONTRACT NO. 76C43