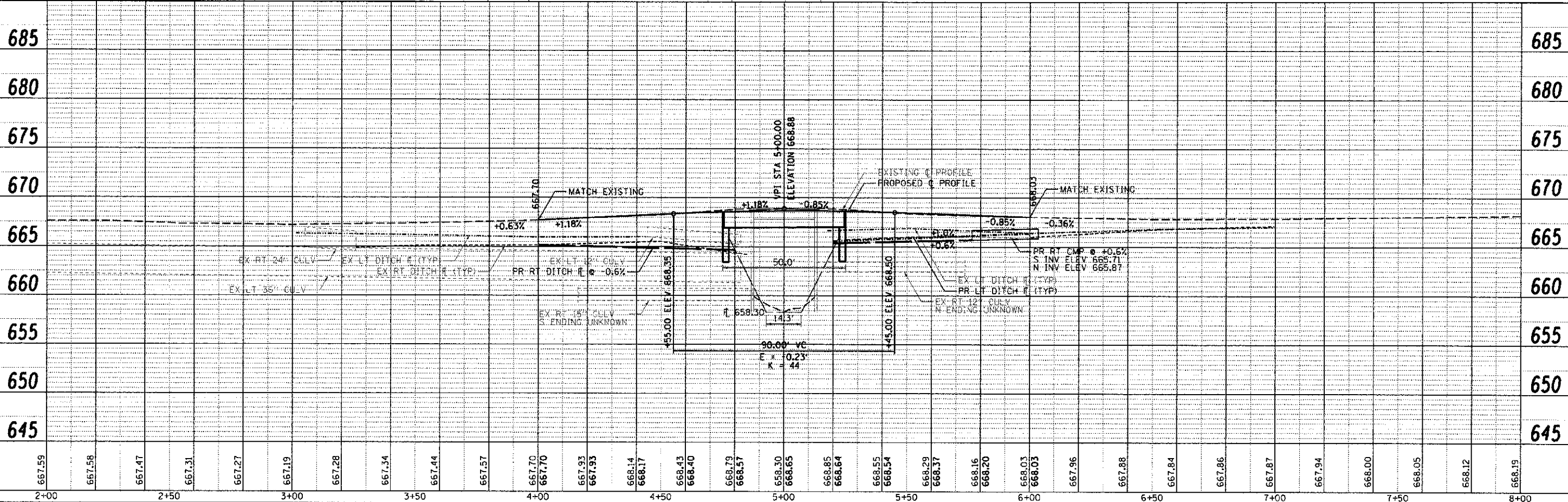
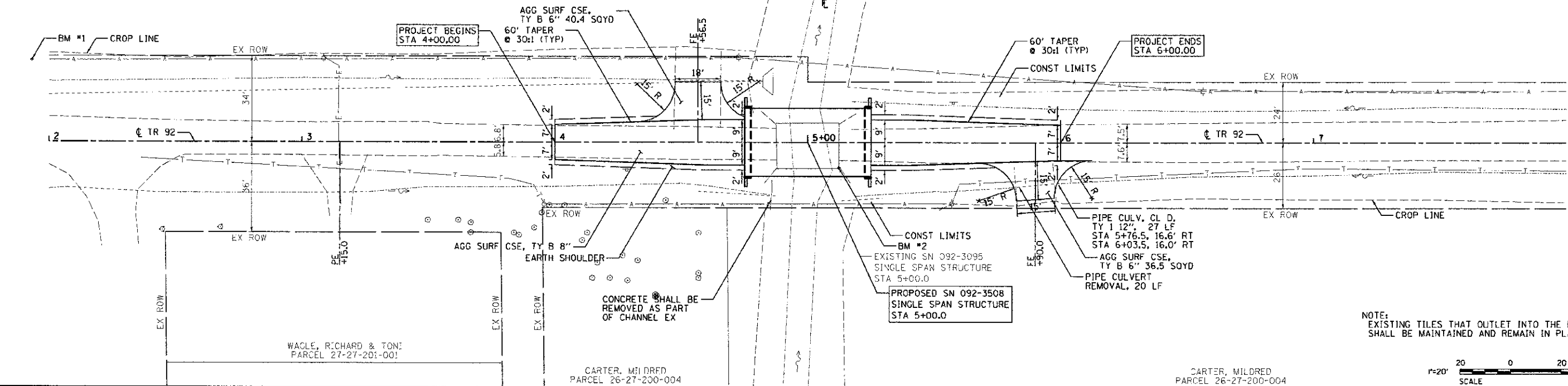


BENCH MARK #1 - SPIKE IN POWER POLE
 STA 1+93.19, 33.2' LT, ELEV = 667.59
 BENCH MARK #2 - CUT " " IN NORTH END OF EAST HUB GUARD
 STA 5+12.20, 10.0' RT, ELEV = 669.13
 BENCH MARK #3 - SPIKE IN POWER POLE
 STA 8+67.00, 19.94' LT, ELEV = 669.88

GUICHARD, GLORIA & DONALD
 PARCEL 26-27-200-001

GUICHARD, GLORIA & DONALD
 PARCEL 26-27-200-001

CONTRACT NUMBER: 91463



667.59	667.58	667.47	667.31	667.27	667.19	667.28	667.34	667.44	667.57	667.70	667.70	667.93	667.93	668.14	668.17	668.43	668.40	668.79	668.57	668.30	668.65	668.85	668.84	668.55	668.54	668.29	668.37	668.16	668.20	668.03	668.03	667.96	667.88	667.84	667.86	667.87	667.94	668.00	668.05	668.12	668.19
2+00	2+50	3+00	3+50	4+00	4+50	5+00	5+50	6+00	6+50	7+00	7+50	8+00																													

ESI CONSULTANTS, LTD
 753 WINDSOR ROAD
 CHARLESTON, IL 61910
 (217) 543-1900
 WWW.ESICONSULTANTS.COM
 ILLINOIS DEPARTMENT OF PROFESSIONAL REGULATION REGISTRATION #184-003885

VERMILION COUNTY
 2732 Batestown Road
 Oakwood, IL 61858
 (217) 431-6682 Ext. 101

NO.	DATE	DESCRIPTION OF REVISIONS	NO.	DATE	DESCRIPTION OF REVISIONS

ESI PROJECT NO: 11-406
 FILE: 04_TR_92_PirPr.f
 DATE: 05-17-2012
 ENGR: ADG
 DRAWN BY: ADG
 QCQA:

TR 92 OVER JORDAN CREEK
05-09118-00-BR
JAMAICA TOWNSHIP - VERMILION COUNTY

PLAN & PROFILE
 SHEET 1 OF 1
04
 OF 15