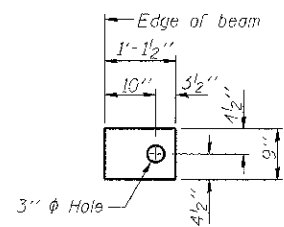


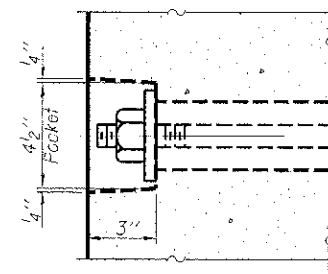
FABRIC BEARING PAD
(Interior)



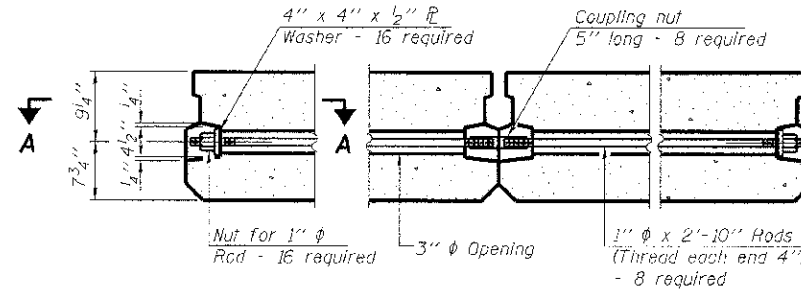
FABRIC BEARING PAD
(Exterior)

FIXED

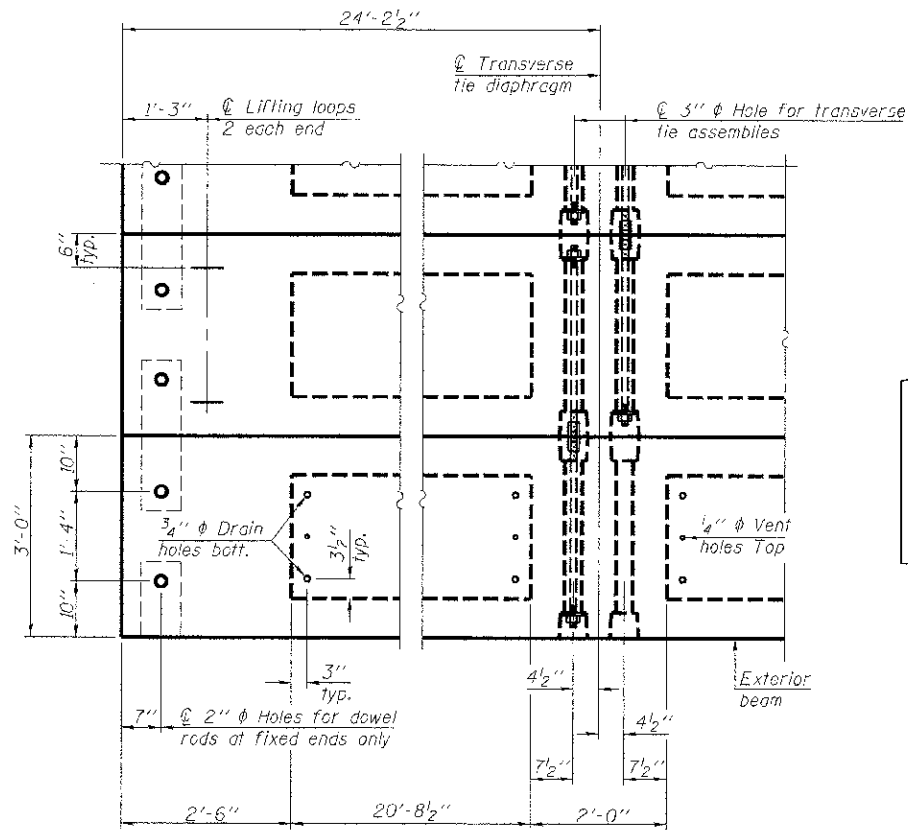
Notes:
All bearing pads shall be 1" thick.
Omit holes when using expansion bearings.
Expansion bearing pad shall be bonded to the substructure.



SECTION A-A

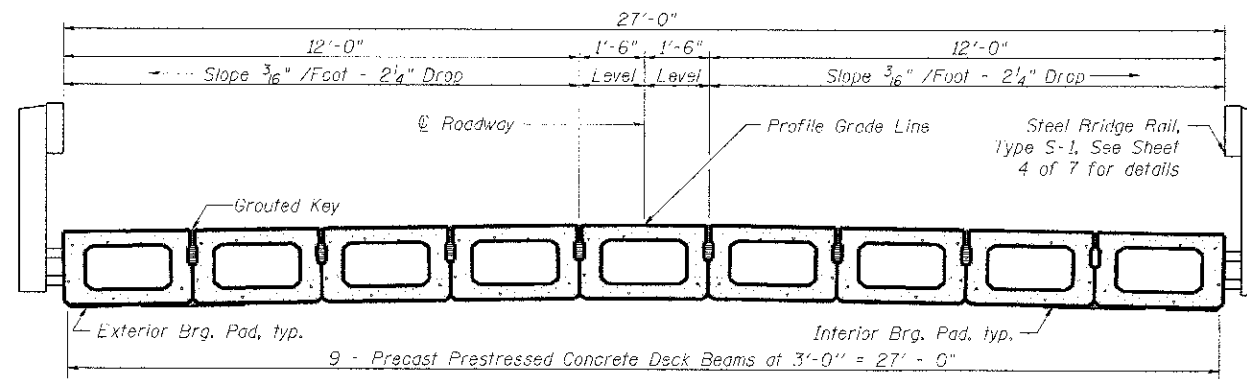


TYPICAL TRANSVERSE TIE ASSEMBLY



PLAN VIEW

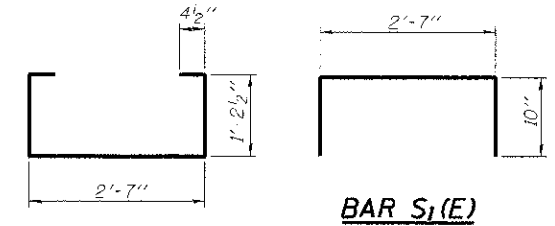
Note: Connect beams in pairs with the transverse tie configuration shown.



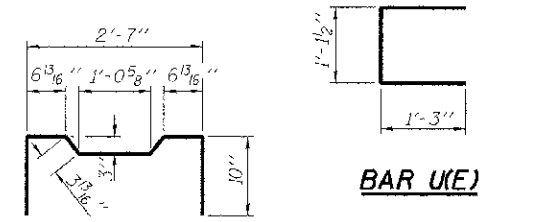
CROSS SECTION

NOTES

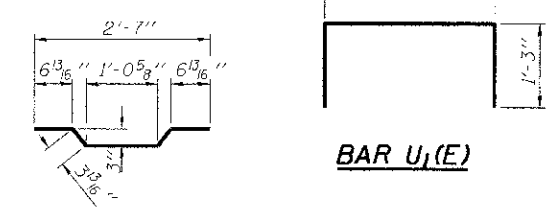
Prestressing steel shall be uncoated high strength, low relaxation 7-wire strand, Grade 270. The nominal diameter shall be 1/2" and the nominal cross-sectional area shall be 0.153 sq. in. The 1" rods in the transverse tie assembly shall be tightened to a snug fit and the threads set. Pockets on exterior faces of bridge shall be filled with grout after transverse tie assembly is in place.
Reinforcement bars shall conform to ASTM A 706, Grade 60. (See Special Provisions).
Two 1/8" fabric adjusting shims of the dimensions of the exterior bearing pad shall be provided for each bearing pad location.
A minimum 2 1/2" diameter lifting pin shall be used to engage the lifting loops during handling.
Corrosion Inhibitor, per Article 1020.05(b)(12) and 1021.06 of the Standard Specifications, shall be used in the concrete for precast prestressed concrete deck beams.
Compressive strength of prestressed concrete, f'c, shall be 7000 psi.
Compressive strength of prestressed concrete at release, f'cl, shall be 6000 psi.



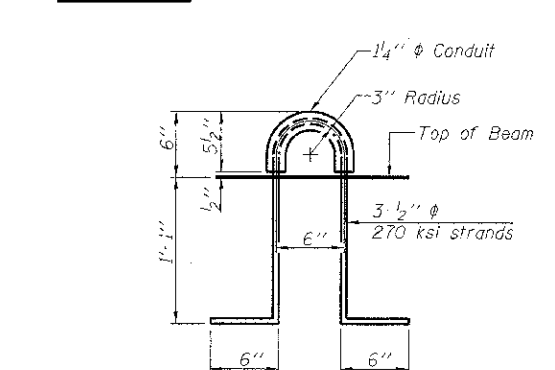
BAR S1(E)



BAR S2(E)



BAR U1(E)



LIFTING LOOP DETAIL

BILL OF MATERIAL

Precast Prestressed Conc. Deck Bms. (17" depth)	Sq. Ft.	1308
---	---------	------

PD-1736-0D

7-1-10



USER NAME = #UCER#	DESIGNED - DF	REVISED -
PLOT SCALE = 0.0033' = 1" IN.	CHECKED -	REVISED -
PLOT DATE = 6/11/2012	DRAWN - JEH, ADG	REVISED -
	CHECKED - DF	REVISED -

STATE OF ILLINOIS
DEPARTMENT OF TRANSPORTATION

17" x 36" PPC DECK BEAM DETAILS
STRUCTURE NO. 092-3508

SHEET NO 3 OF 7 SHEETS

TWP. RITE.	SECTION	COUNTY	TOTAL SHEETS	SHEET NO.
92	05-09118-00-BR	VERMILION	15	08
CONTRACT NO. 91463			ILLINOIS FED. AID PROJECT	

PRINTED DATE: 6/11/2012
 FILE NUMBER: 05-09118-00-BR
 PROJECT: 05-09118-00-BR
 COUNTY: VERMILION
 COUNTY OF VERMILION, COUNTY OF ILLINOIS
 PROJECT NO. 092-3508